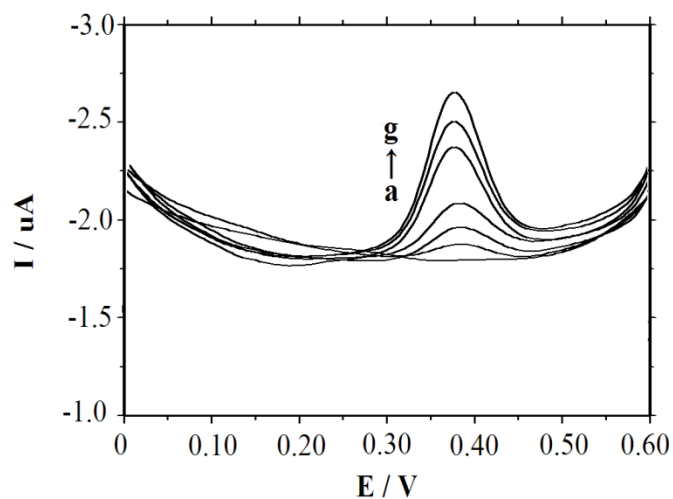


Electronic Supplementary Information (ESI) for Analytical Methods

### Supporting information (SI)

## Electrochemical behaviours of luteolin on graphene modified glassy carbon electrode and its sensitive detection

Guangjiu Li<sup>a\*</sup>, Lihua Liu<sup>b</sup>, Yong Cheng<sup>a</sup>, Shixing Gong<sup>a</sup>, Xiuli Wang<sup>a</sup>, Xiujuan Geng<sup>a</sup>, Wei Sun<sup>a\*</sup>



**Fig. S1** DPV curves of luteolin at lower concentration (from a to g: 0, 0.002, 0.008, 0.08, 0.2, 0.4, 0.8  $\mu\text{mol L}^{-1}$ , respectively).