

Supplementary Information

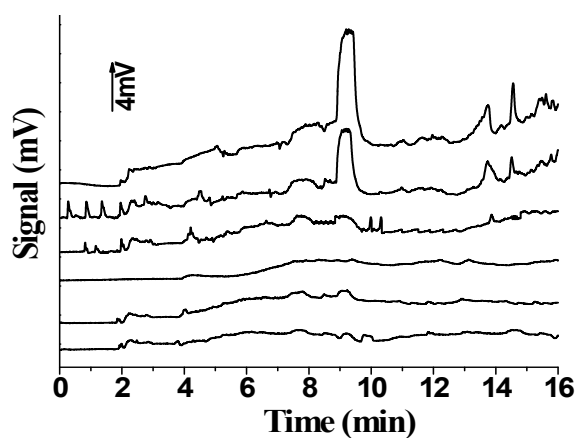


Fig. S1. Influence of injection port temperature on the chromatogram of blank PANI-PmAB-IL fiber. Injection port temperature (from bottom to top): 280 °C, 300 °C, 320 °C, 330 °C, 340 °C and 350 °C. In order to easily distinguish them the baselines are moved along the ordinate axis to different extent.

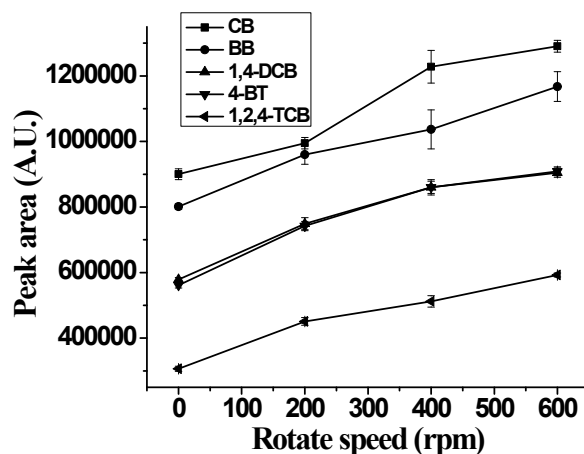


Fig. S2. Effect of stirring speed on extraction efficiency of the PANI-PmAB-IL fiber. Extraction time: 30 min; stirring speed: 600 rpm; NaCl concentration: 0.35 g mL⁻¹; desorption temperature: 250 °C; desorption time: 3 min; concentration of aryl halides: 0.2 µg mL⁻¹ (for CB, BB, 1,4-DCB, 4-BT and 1,2,4-TCB).

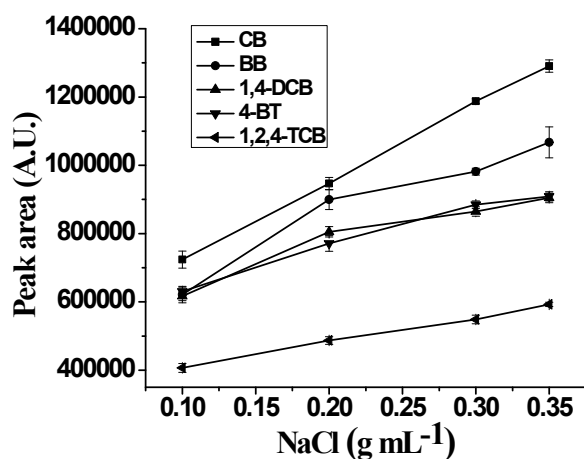


Fig. S3. Effect of NaCl concentration on the extraction efficiency of the PANI-PmAB-IL fiber. Other conditions as in Fig. S2.

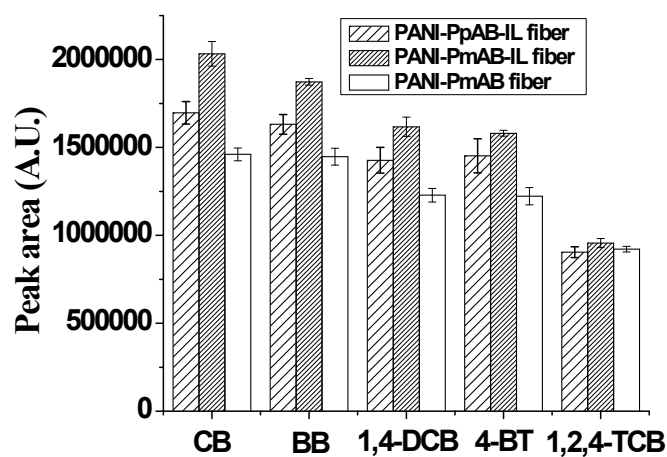


Fig. S4. Comparison of the extraction efficiency of PANI-PmAB-IL fiber, PANI-PpAB-IL fiber and PANI-PmAB fiber for aryl halides. Extraction time: 30 min; extraction temperature: 30 °C; stirring speed: 600 rpm; NaCl concentration: 0.35 g mL⁻¹; desorption temperature: 250 °C; desorption time: 3 min; concentration of aryl halides: 0.2 µg mL⁻¹ (for CB, BB, 1,4-DCB, 4-BT and 1,2,4-TCB).

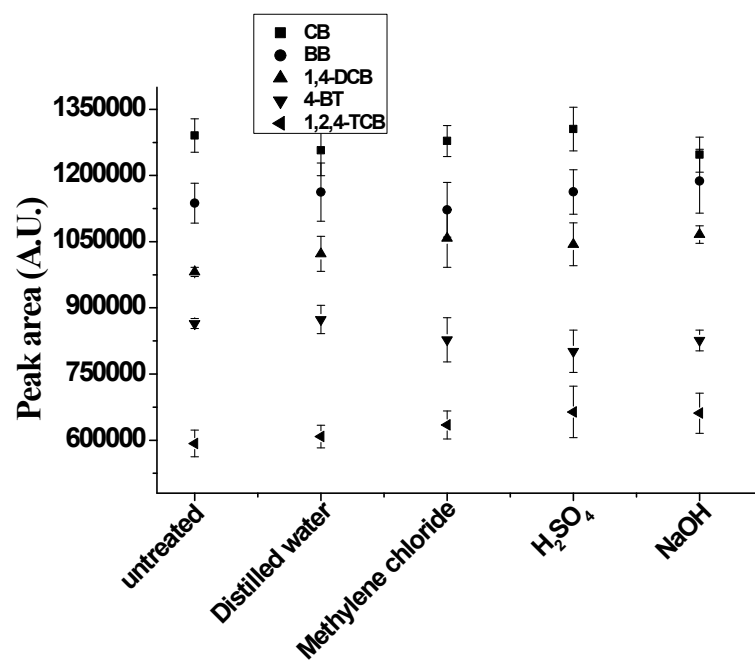


Fig. S5. Change of extraction efficiency after soaked in distilled water, dichloromethane, 1M H₂SO₄ and 1M NaOH. Extraction conditions as in Fig. S4.