

Supplementary data

Appendix A

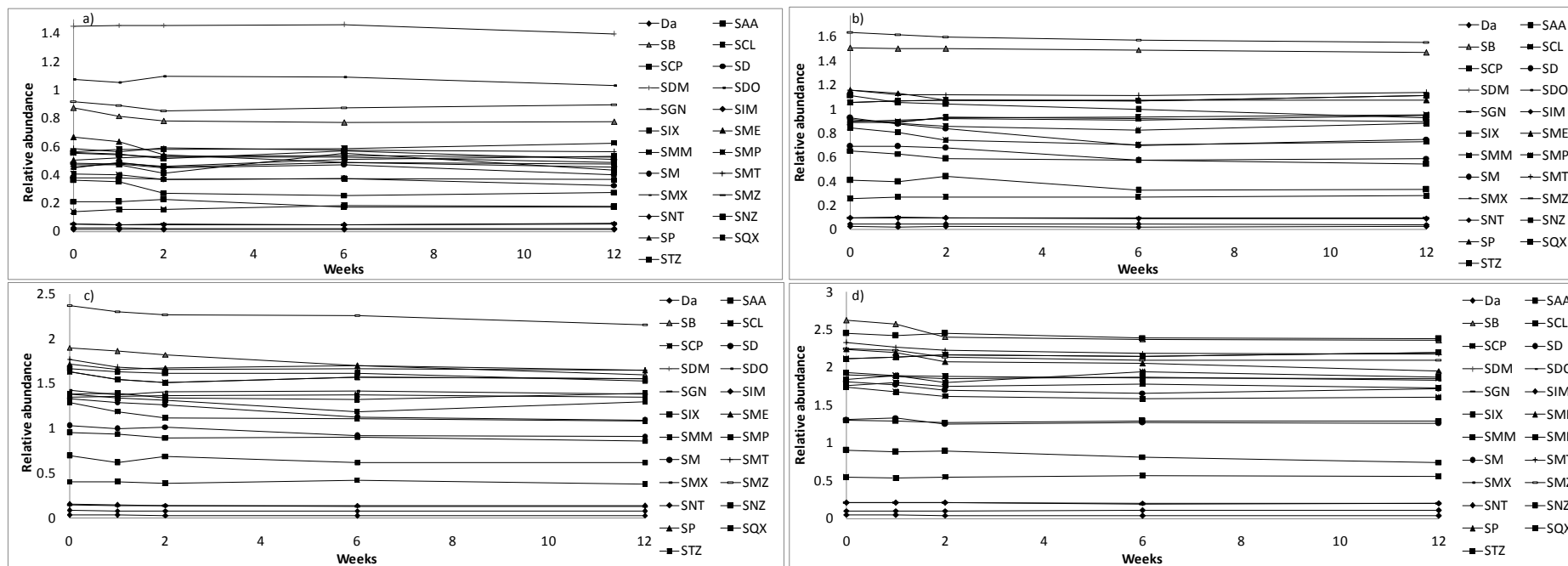


Fig.A1: Stability of SAs in spiked beef muscle at different concentrations a) 50 (1.25), b) 100 (2.5), c) 150 (3) and d) 200 (5) $\mu\text{g.kg}^{-1}$ for respectively SAs and dapsone compounds.

Appendix B

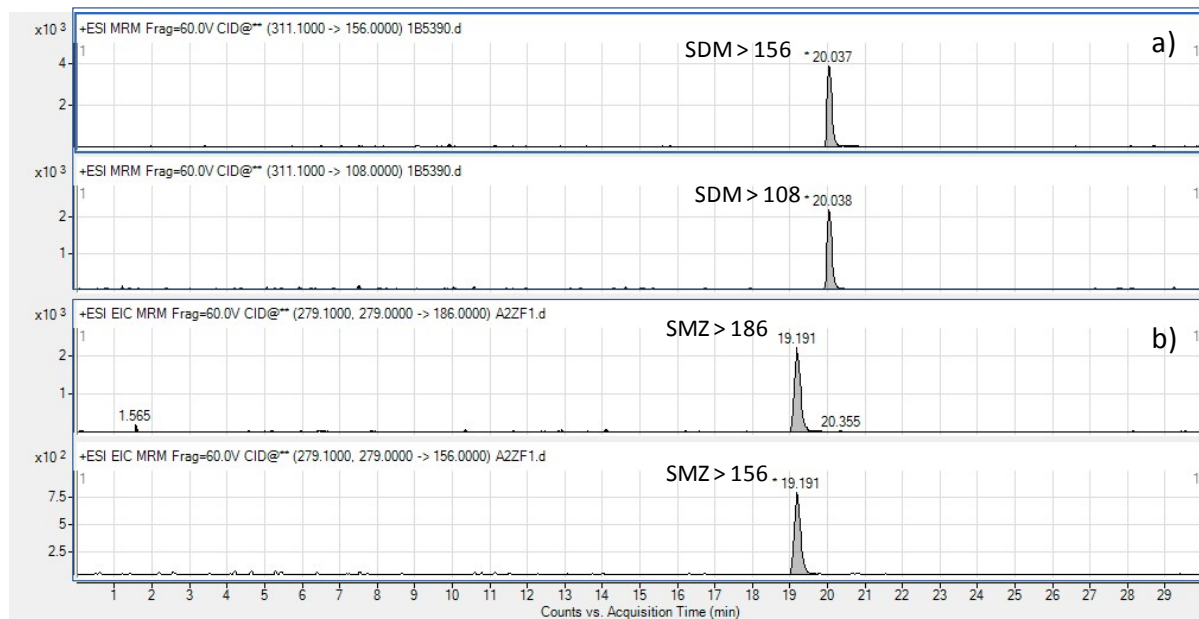


Fig. B1: LC-MS/MS chromatograms of some analysed samples (a) S5 containing SDM ($59.1 \mu\text{g}\cdot\text{kg}^{-1}$) and (b) S20 containing SMZ ($70.2 \mu\text{g}\cdot\text{kg}^{-1}$).

Appendix C

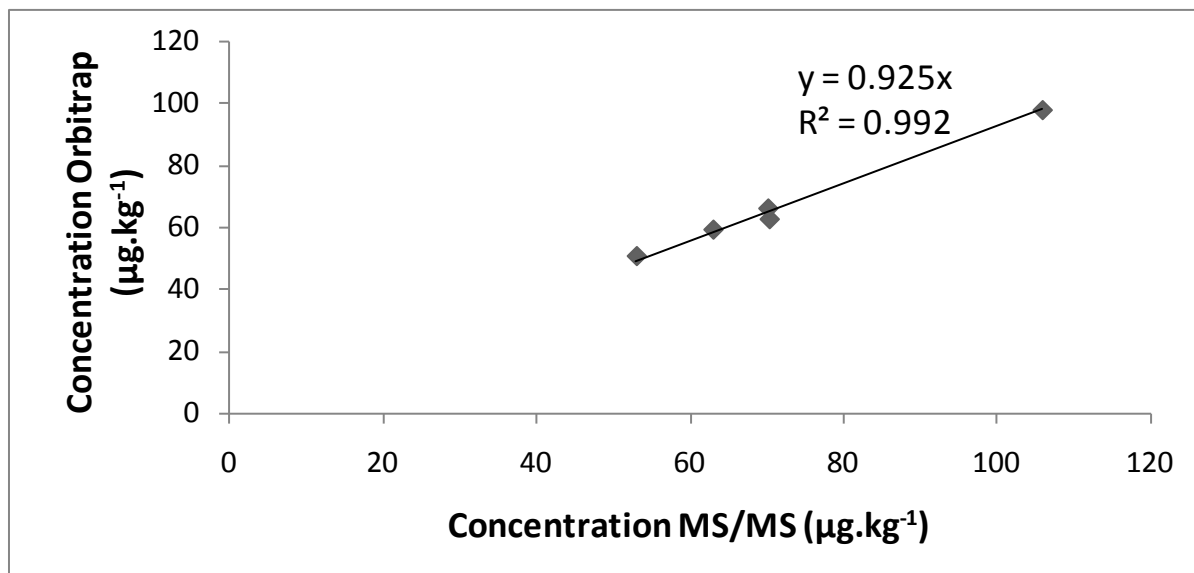


Fig. C1: Correlation graph of concentrations (µg.kg⁻¹) determined of studied compounds with triple quadrupole mass spectrometry (QqQ) and Orbitrap analyzers in meat samples.