

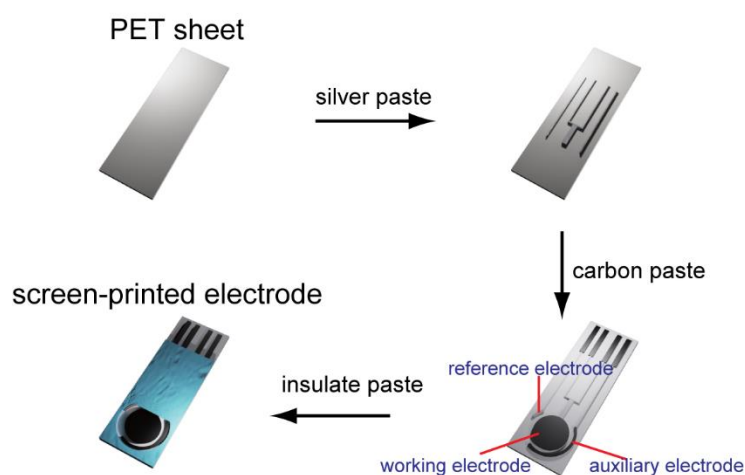
Supplementary Material (ESI) for Analytical Methods  
This journal is (C) The Royal Society of Chemistry 2009

## A hybrid method combined electrochemical and fluorescence measurement for highly selective and sensitive detection of Cd<sup>2+</sup>

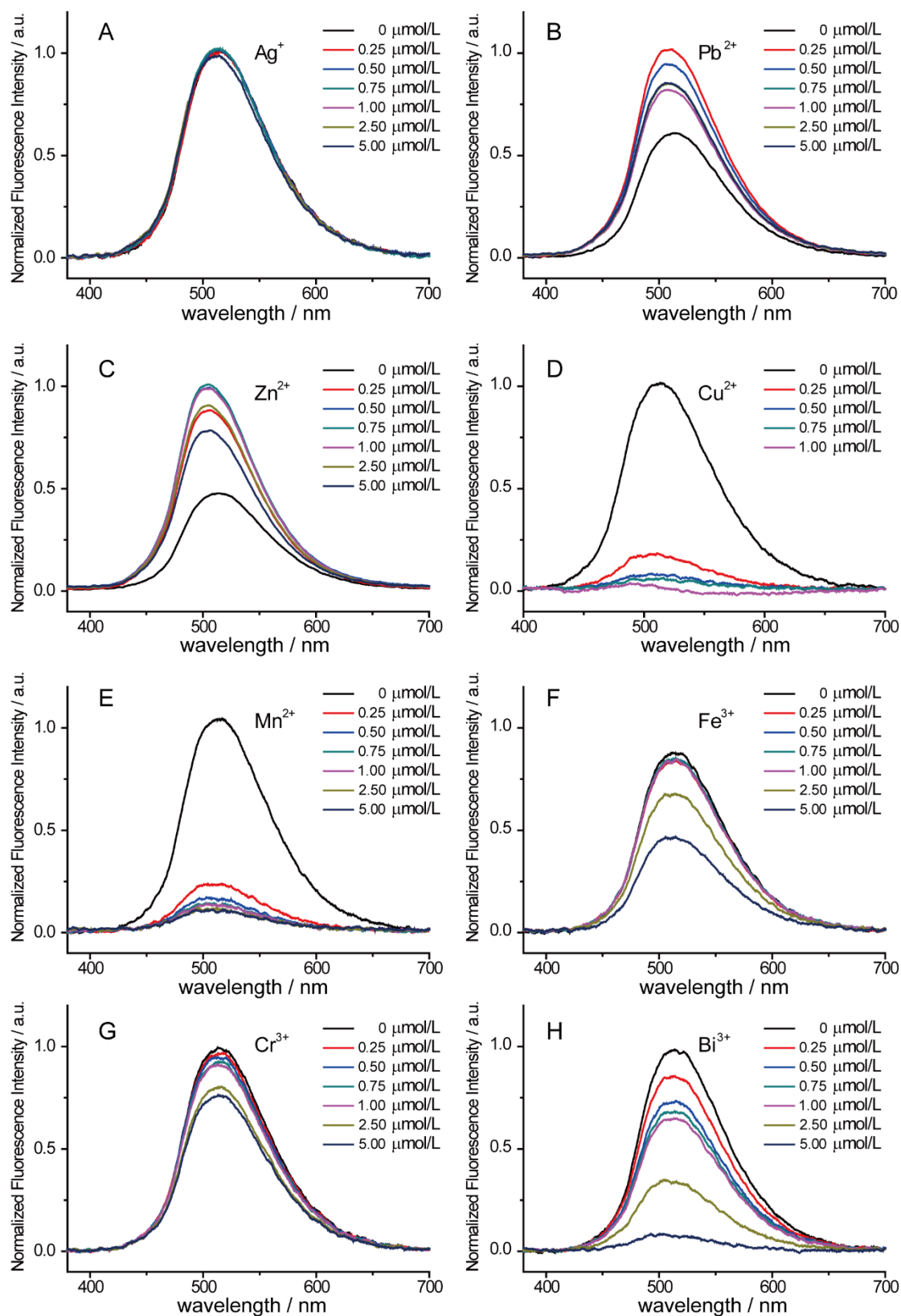
Meng Li, Da-Wei Li, Yi-Tao Long\*

Key Laboratory for Advanced Materials and Department of Chemistry, East China University  
of Science and Technology, Shanghai, 200237 P. R. China.

Email: [ytlong@ecust.edu.cn](mailto:ytlong@ecust.edu.cn)



**Figure S1.** The procedure of fabricating the screen-printed electrodes (SPEs).



**Figure S2.** The fluorescence spectra of serial concentration of (A) Ag<sup>+</sup>, (B) Pb<sup>2+</sup>, (C) Zn<sup>2+</sup>, (D) Cu<sup>2+</sup>, (E) Mn<sup>2+</sup>, (F) Fe<sup>3+</sup>, (G) Cr<sup>3+</sup> and (H) Bi<sup>3+</sup> adding into the 2 mL hexamethylenetetramine buffer containing 10.0 μmol/L Fura-2.