

Supplementary Information

Untreated and Dried Sample Analysis by Solid Probe Assisted Nano Electrospray

Ionization

Mridul Kanti Mandal,^{*†a} Subhrakanti Saha,^{§a} Zhan Yu,^{a,b} Kentaro Yoshimura,^c Sen Takeda,^c and
Kenzo Hiraoka^{*a}

^aClean Energy Research Center, University of Yamanashi, 4-3-11 Takeda, Kofu, Yamanashi,
400-8511 Japan.

^bSchool of Chemical and Life Sciences, Shenyang Normal University, Shenyang, 110034, China

^cDepartment of Anatomy and Cell Biology, Interdisciplinary Graduate School of Medicine and
Engineering, University of Yamanashi, Chuo,

Yamanashi 409-3898, Japan

Current address:

[‡] Mridul Kanti Mandal

Department of Chemistry and Biochemistry

University of Notre Dame, Notre Dame IN 46556USA

Email: mmandal@nd.edu

^{§ §} Subhrakanti Saha

The RNA Institute

Life Science Research Building 2027

State University of New York at Albany

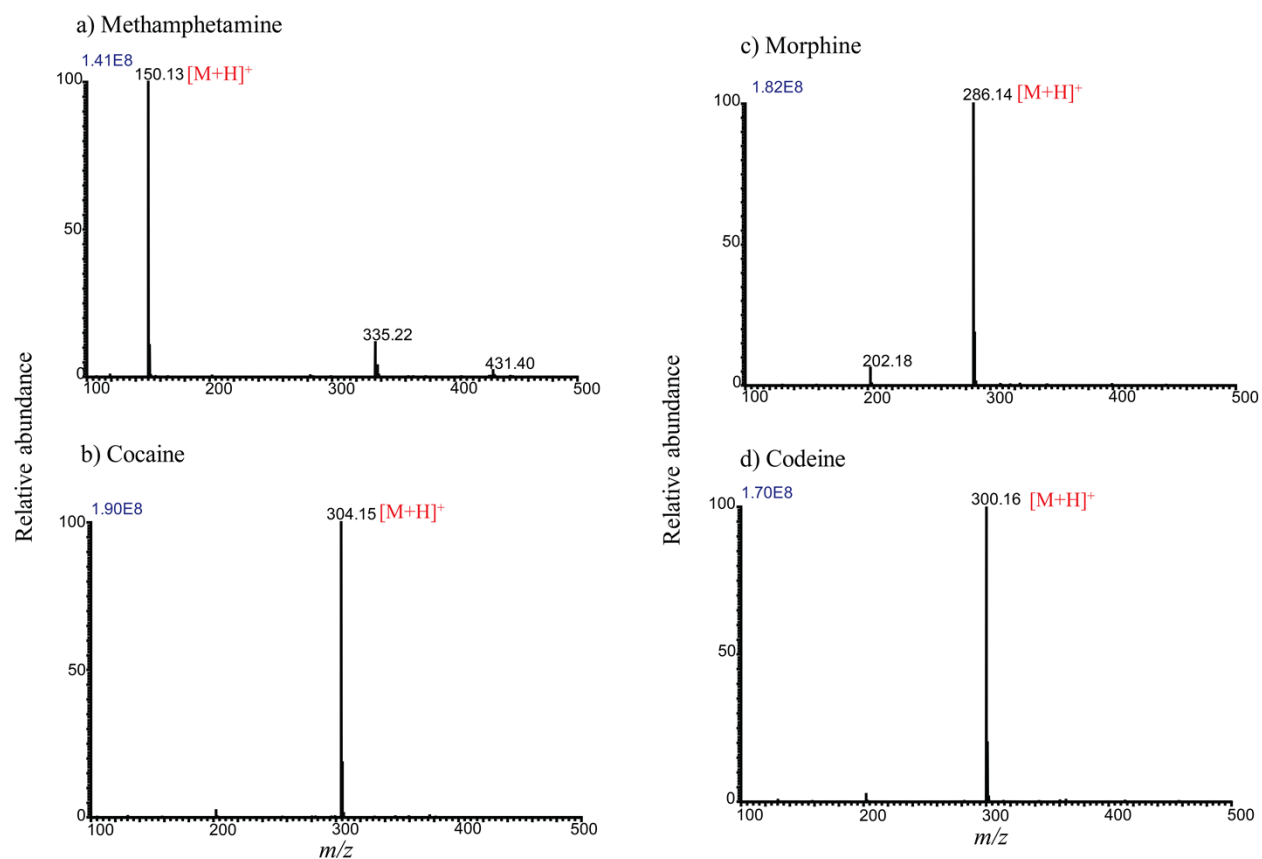
1400 Washington Avenue

Albany, NY 12222

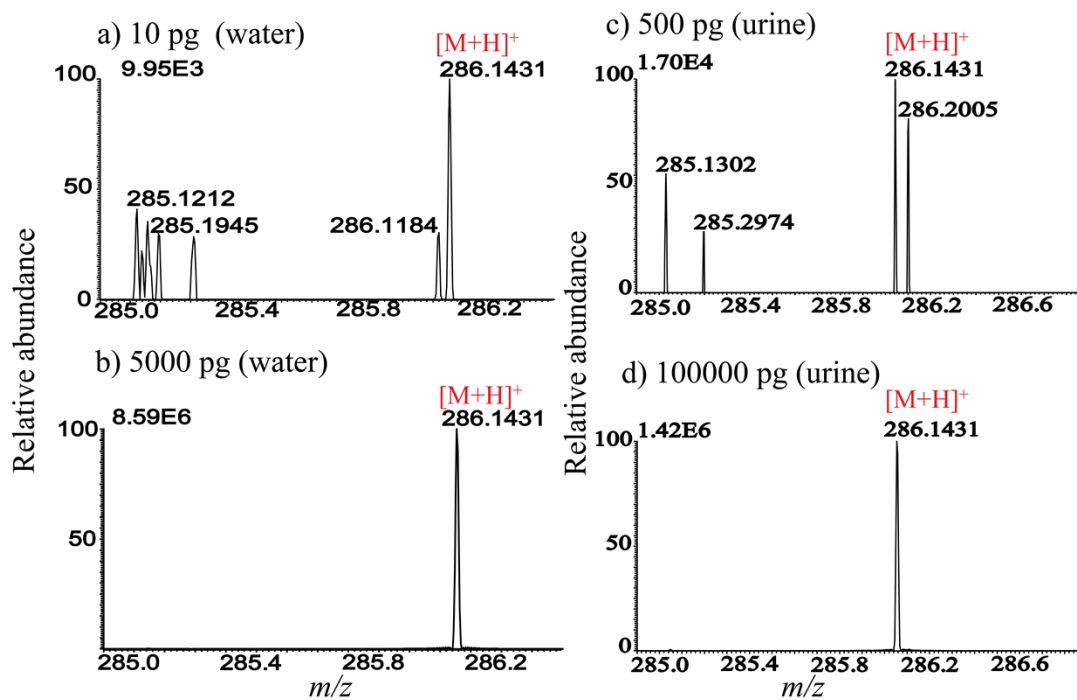
Corresponding author:

M.K. Mandal, mmandal@nd.edu, Tel: +1-574-631-9027

K. Hiraoka, hiraoka@yamanashi.ac.jp; Tel: +81-55-220-8572

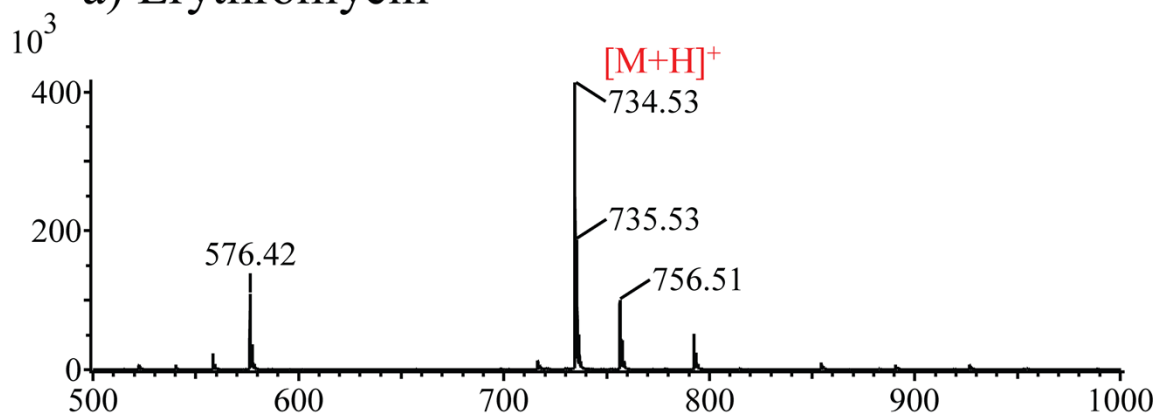


Supplementary Fig.1: Mass spectra for (a) methamphetamine, (b) cocaine, (c) morphine, and (d) codeine in methanol solution. Each of the mass spectra is an average of three successive scans. The powder sample was touched by the needle and then the needle was inserted to the methanol loaded nano capillary for electrospray.

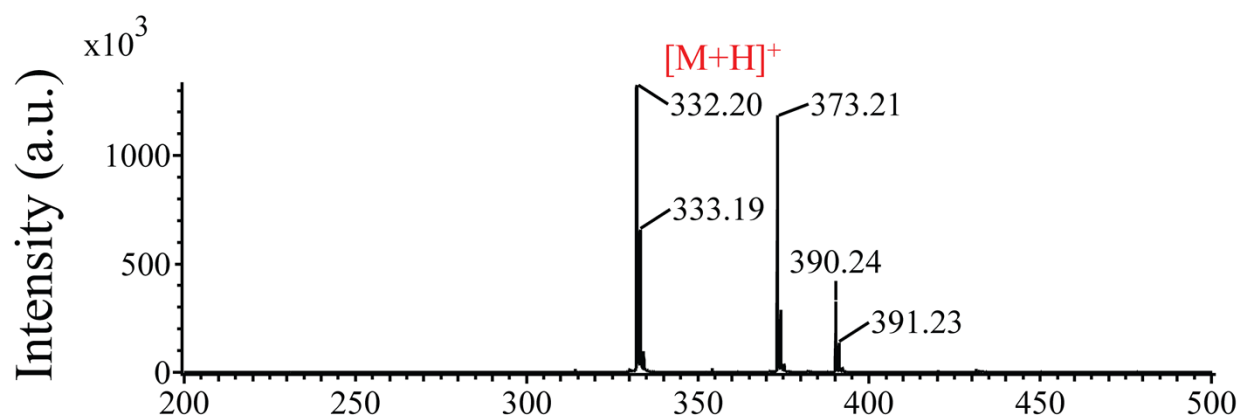


Supplementary Fig. 2. (a,b) SPA-nanoESI mass spectrum of 10 pg and 5000 pg of morphine in water, respectively. (c,d) SPA-nanoESI mass spectrum of 500 pg and 100000 pg of morphine in urine, respectively. The sample solution was dried in the needle tip and inserted to the methanol preloaded nano capillary prior to the analysis. Mass spectra were obtained using a high resolution mass spectrometer (Orbitrap Exactive).

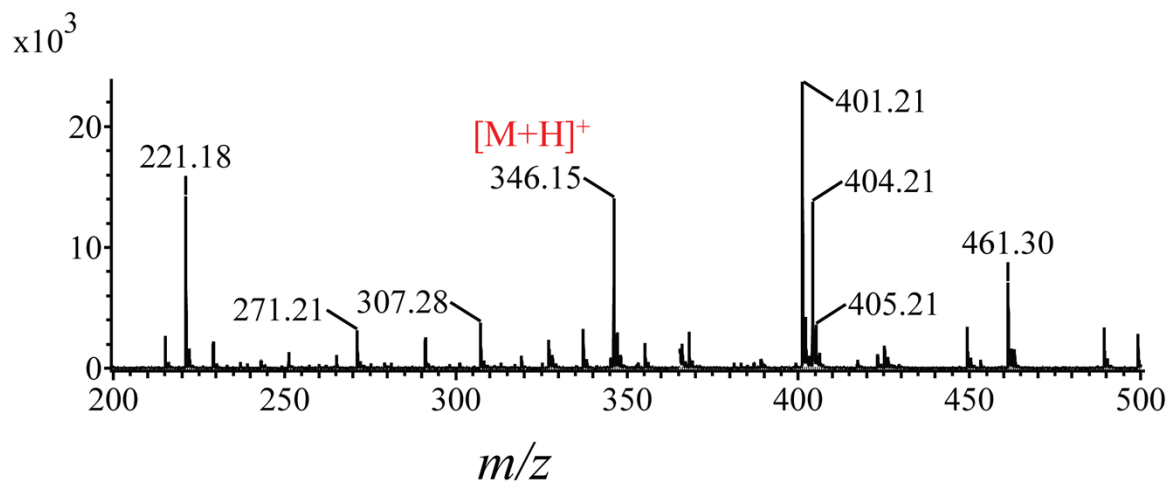
a) Erythromycin



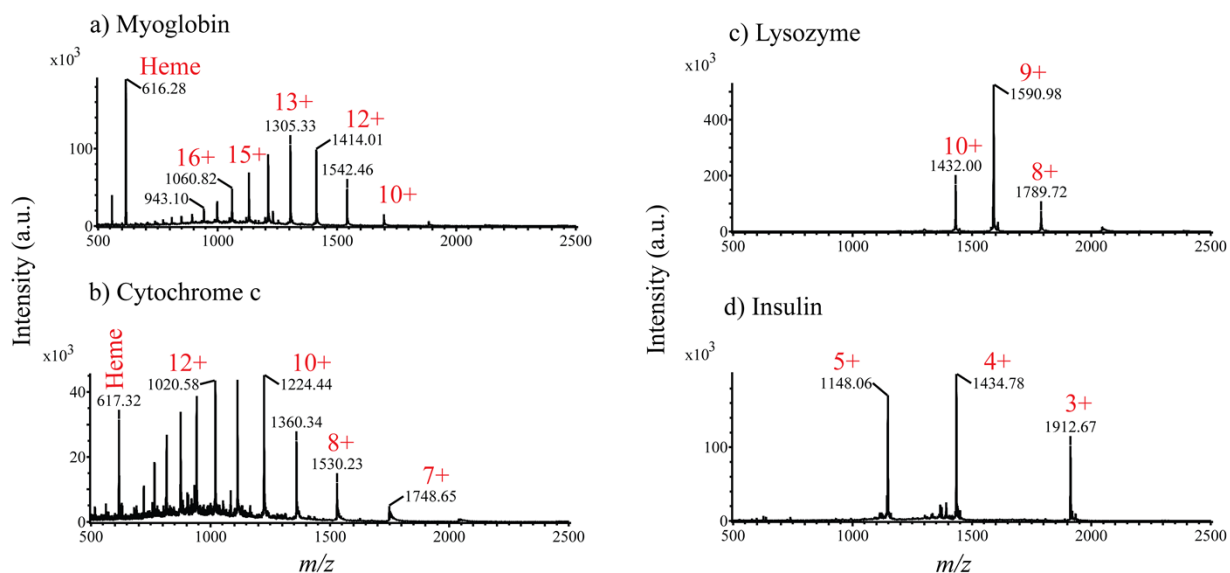
b) Ciproxan



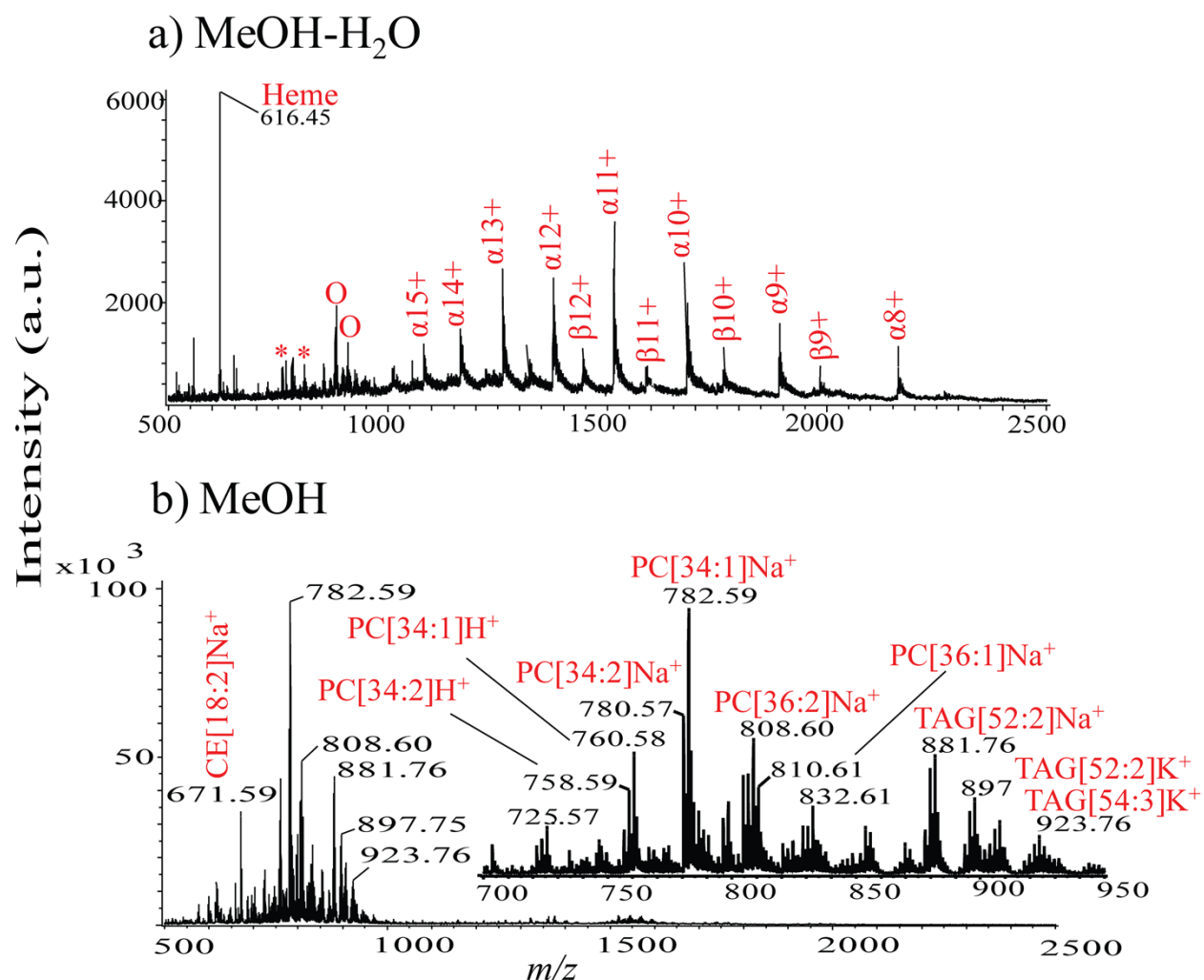
c) Omeprazol



Supplementay Fig. 3: Mass spectra of tablet drugs: (a) erythromycine, (b) ciproxan, and (c) omeprazol. Mass spectra were obtained using a TOF mass spectrometer.



Supplementay Fig. 4: Mass spectra of dried proteins: (a) myoglobin, (b) cytochrom c, (c) lysozyme, and (d) insluin. Mass spectra were obtained using a TOF mass spectrometer.



Supplementary Fig. 5: Positive mode SPA-nanoESI mass spectra of normal kidney tissue with the use of (a) MeOH-H₂O (1/2) and (b) MeOH as solvents. Asterisks (*) and open circles (○) stand for peaks from phosphatidylcholine (PC) and sodiated triacylglycerols (TAG), respectively. Mass spectra were obtained by a TOF mass spectrometer.