

SUPPLEMENTARY INFORMATION

RAPID DETERMINATION OF EMERGING CONTAMINANTS IN WATER AND HERBAL INFUSIONS BY IN-SITU DERIVATIZATION AND GAS CHROMATOGRAPHY-TANDEM MASS SPECTROMETRY.

Beatriz Albero, Consuelo Sánchez-Brunete, Esther Miguel, José L. Tadeo*

*Departamento de Medio Ambiente, Instituto Nacional de Investigación y Tecnología Agraria
y Alimentaria (INIA), Ctra. de La Coruña Km 7.5, 28040 Madrid, Spain.*

Figure S1. EI mass spectra of the derivatives of the target analytes after their derivatization with ethyl chloroformate

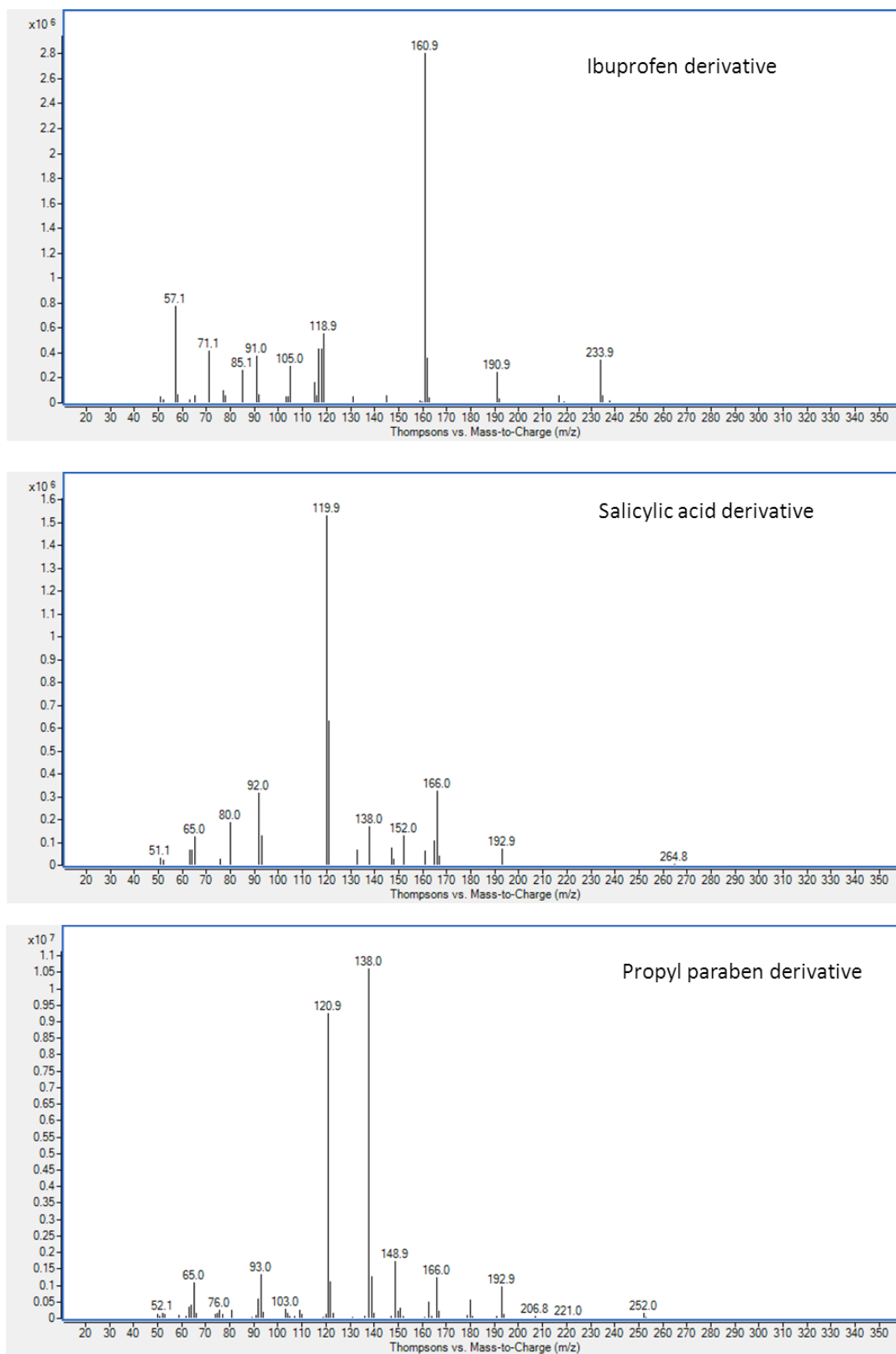


Fig S1 cont.

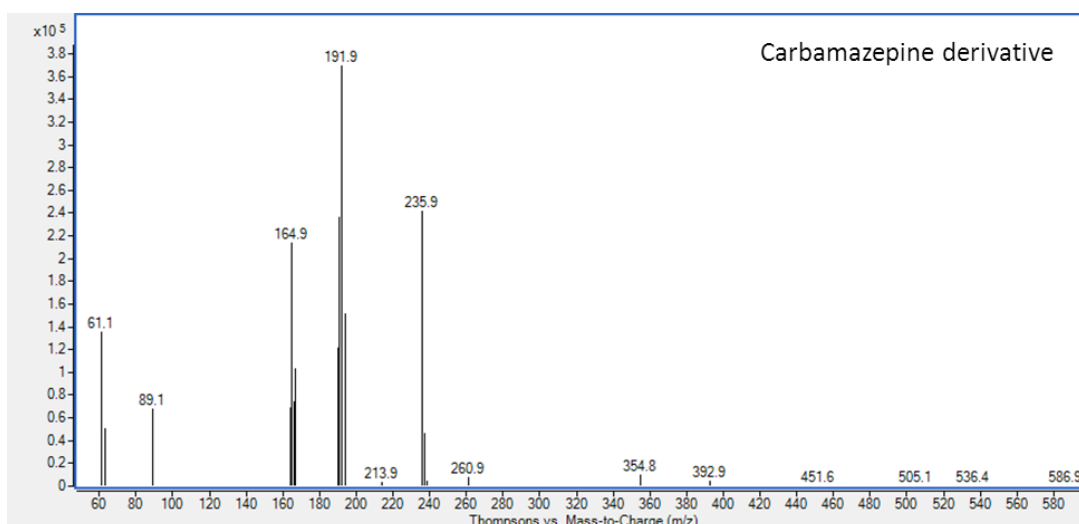
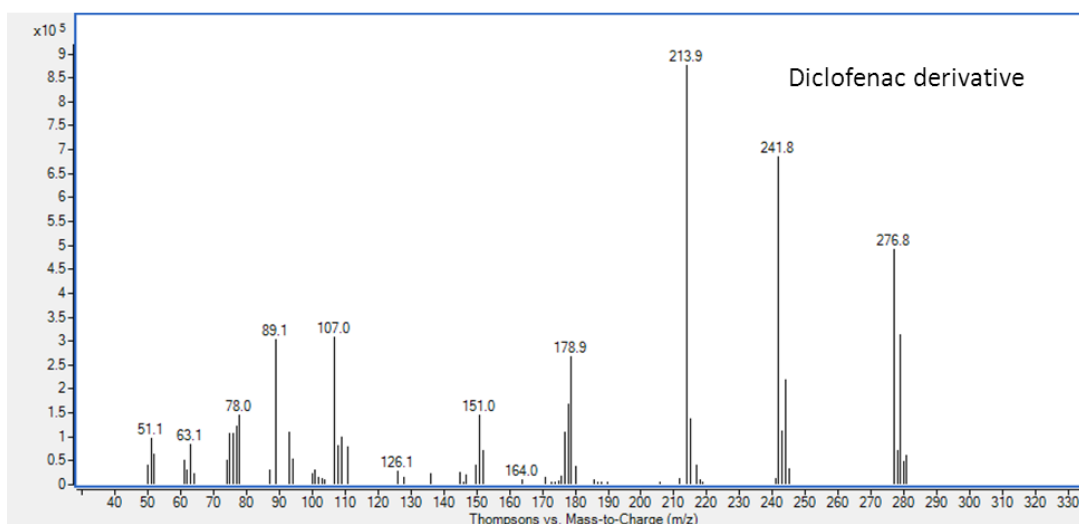
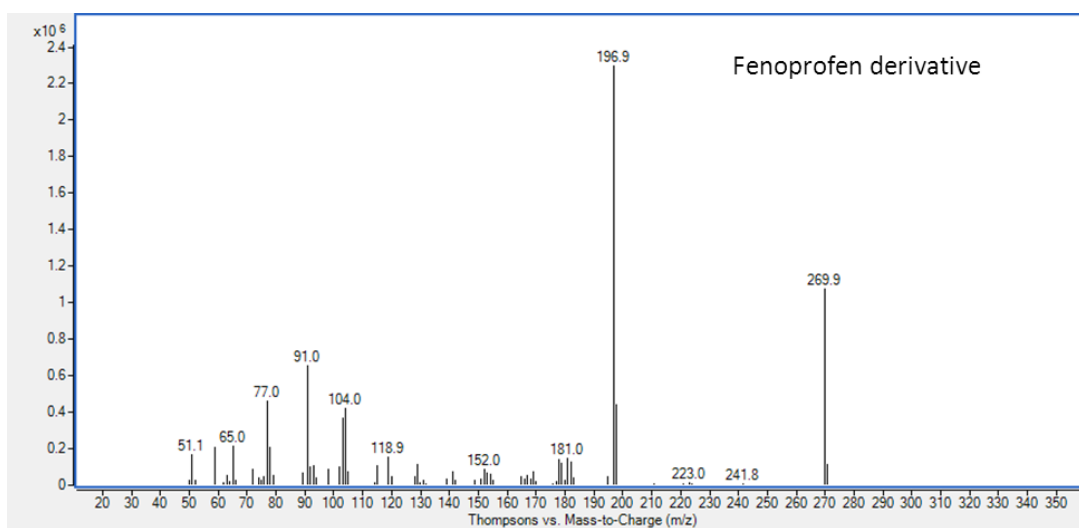


Fig S1 cont.

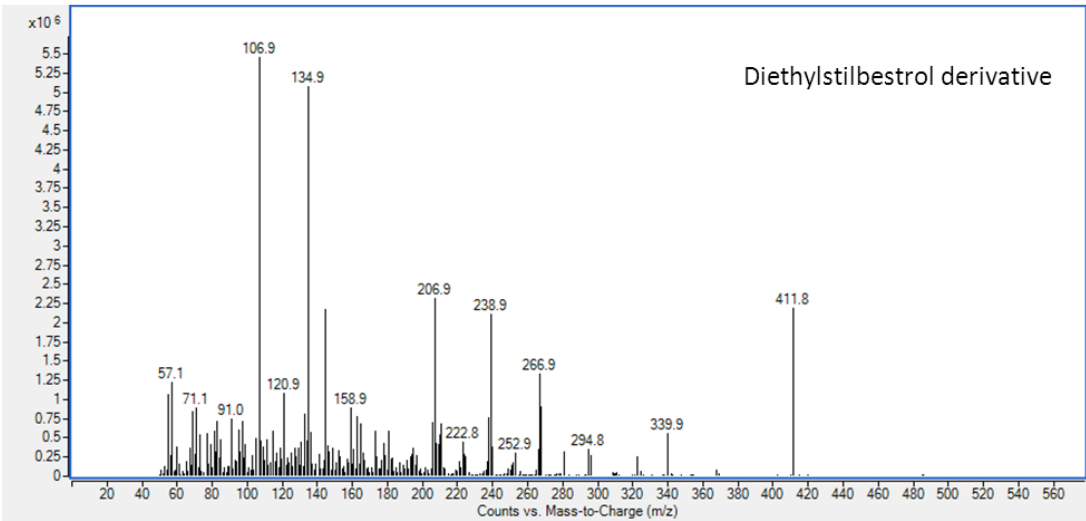
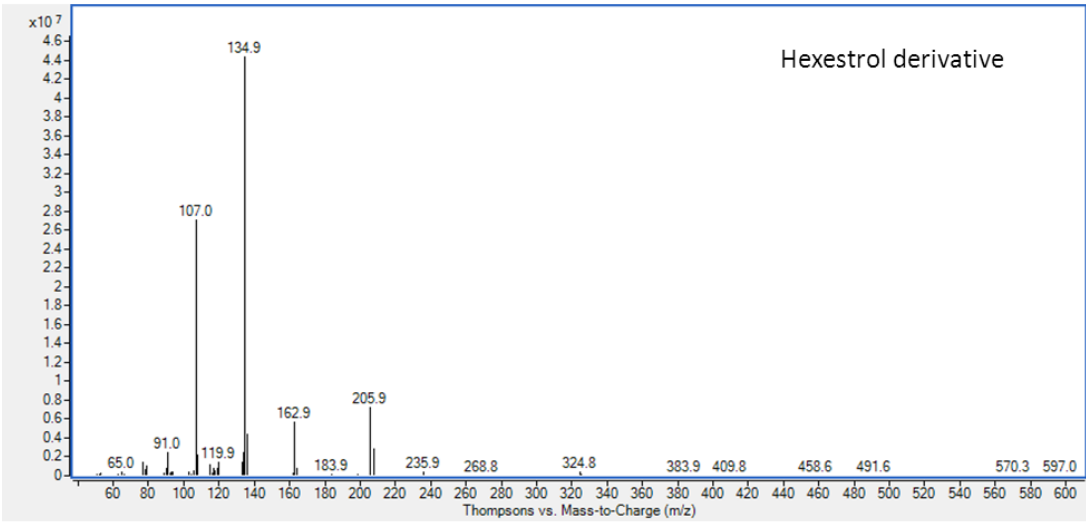
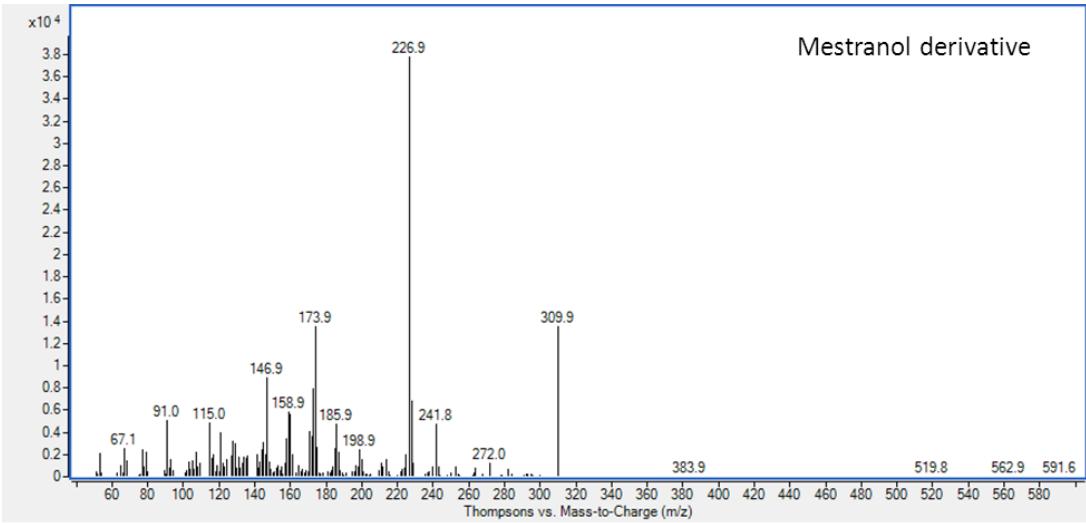


Fig S1 cont.

