

Supporting Information.

Alanine-rich amphiphilic peptide containing the RGD cell adhesion motif: a coating material for human fibroblast attachment and culture

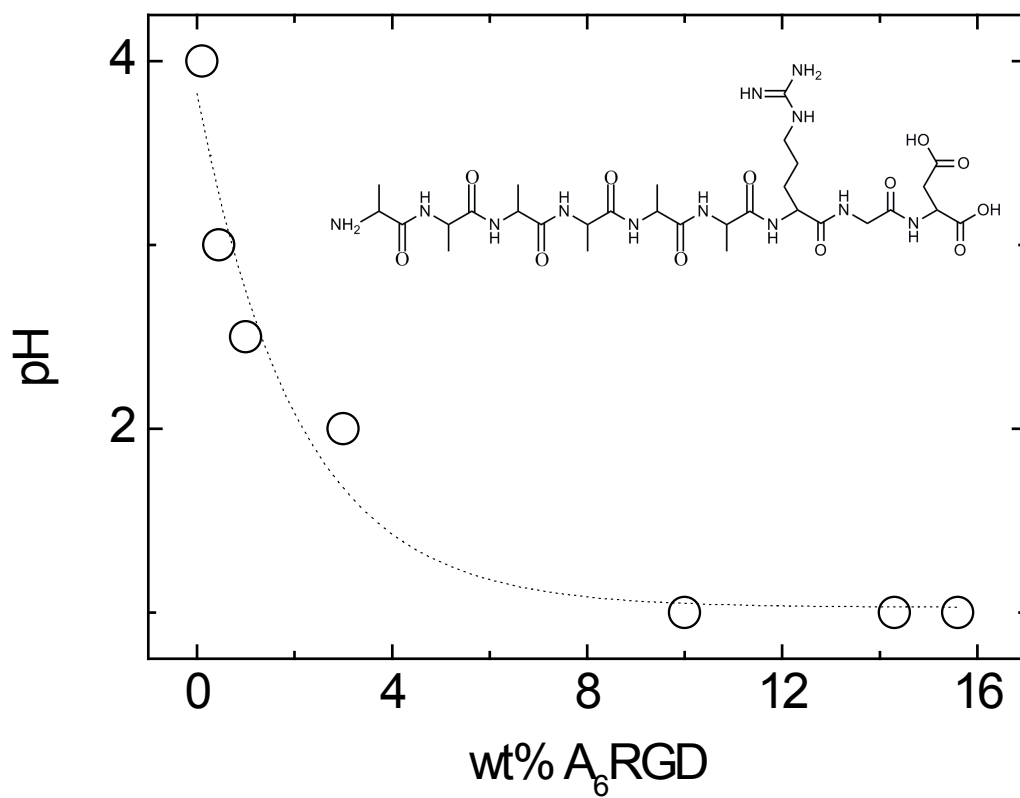
V. Castelletto,^{*} R. M. Gouveia, C. J. Connon, I. W. Hamley, J. Seitsonen, A. Nykänen and J. Ruokolainen

Results Section

SI Table 1. SAXS parameters extracted from the fittings of the experimental data shown in Figure 5.

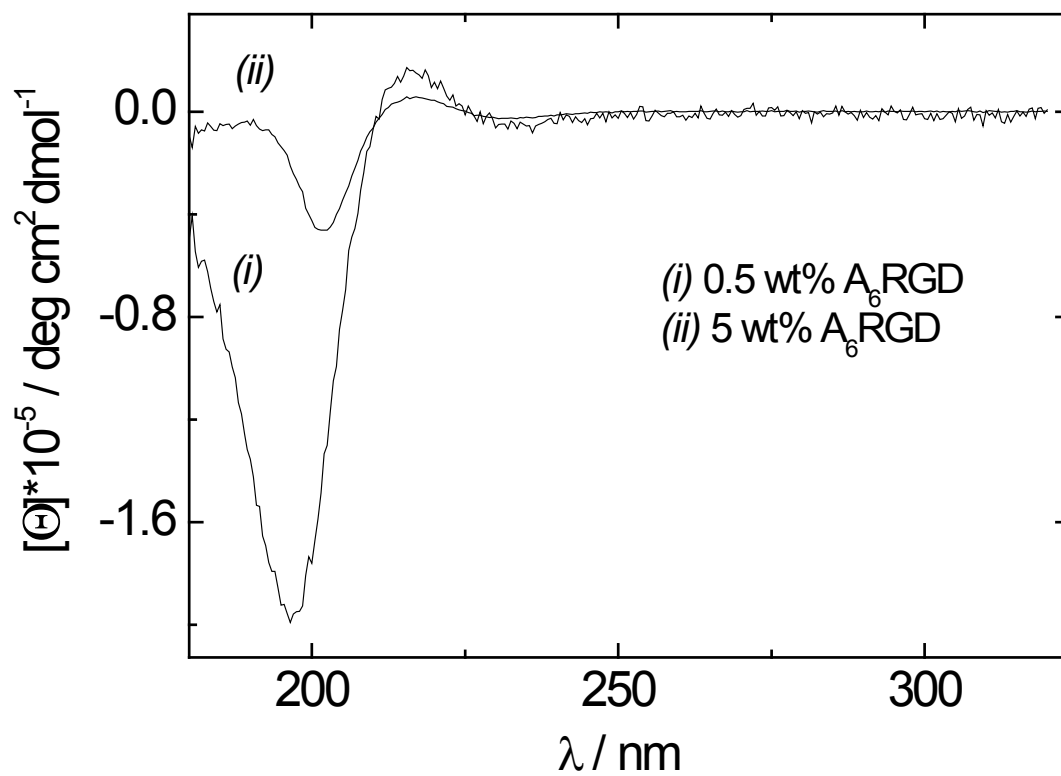
wt% A ₆ RGD	l_T [Å]	ρ_H [rel. units $\times 10^{-7}$]	ρ_C [rel. units $\times 10^{-7}$]	σ_C [Å]	ρ_{cyl} [rel. units $\times 10^{-6}$]	$R \pm \Delta_R$ [Å]	C_1 [rel. units $\times 10^{-4}$]	C_2 [rel. units $\times 10^{-4}$]	C_3
2	37±18	2.1	-2.5	6.2	2.4	155±52	5.9	4.0	1
5	37±18	2.1	-2.5	6.2	1.1	200±69	5.9	3.8	1.1
10	37±12	2.9	-2.5	6.2	2.1	181±69	13	19	1.7

pH



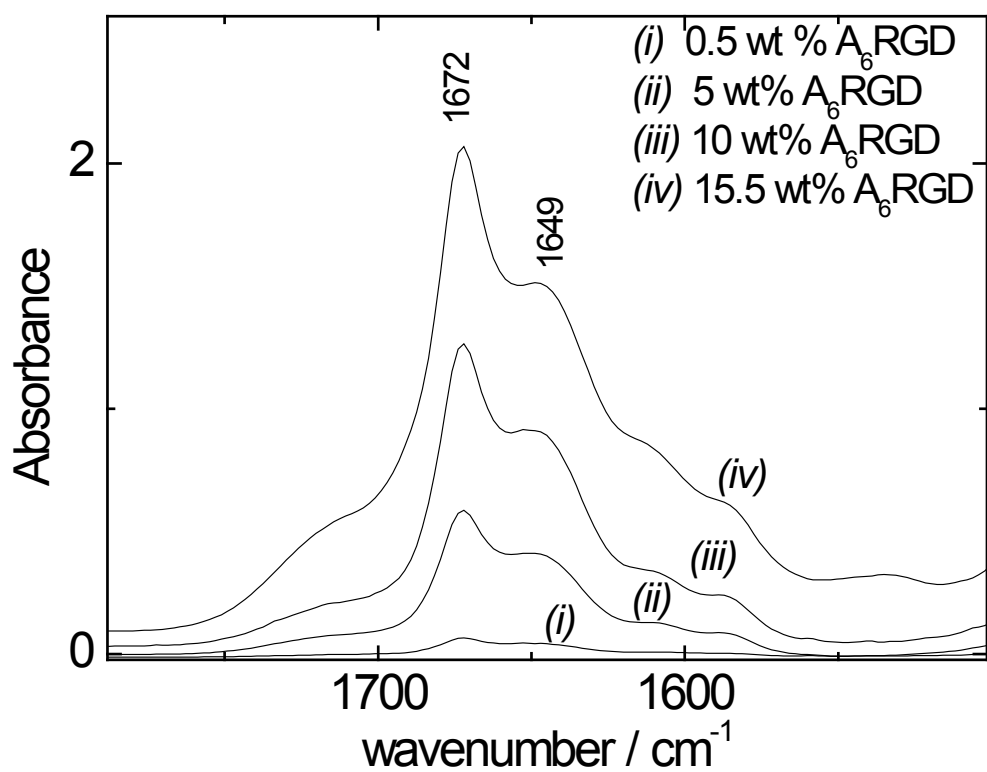
SI Fig 1. pH dependence on concentration for the samples studied in this work, and chemical structure of A₆RGD molecule

CD



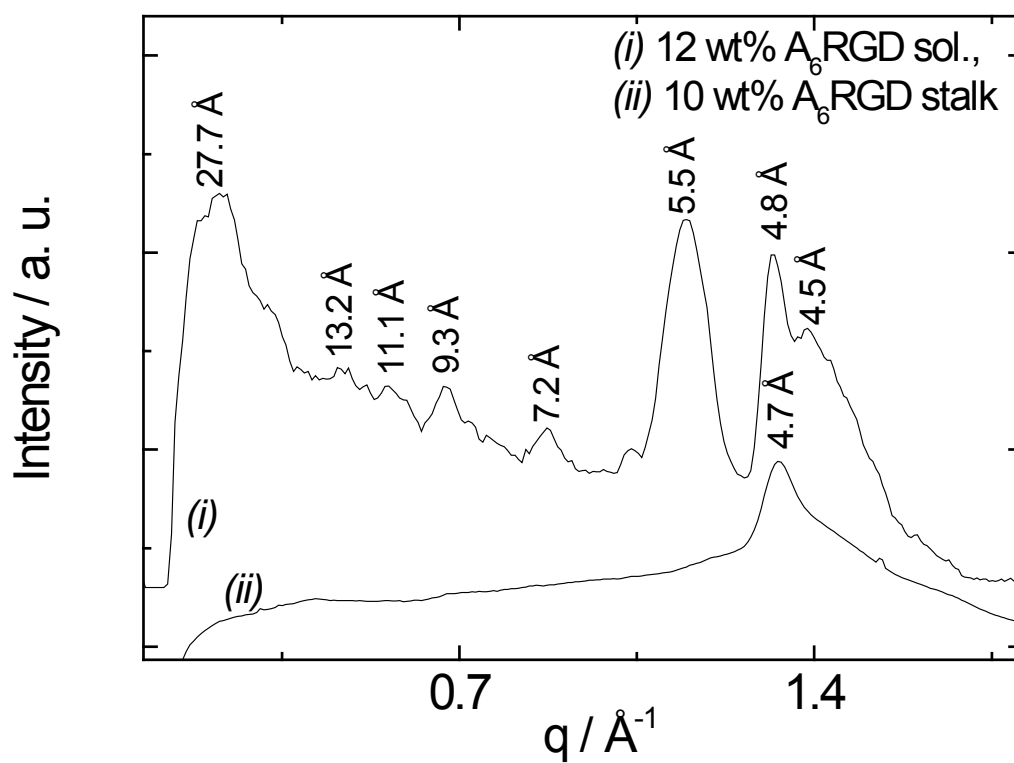
SI Fig. 2. CD results for 0.5 and 5 wt% A₆RGD. The molar ellipticity is normalized by the peptide concentration.

FTIR



SI Fig. 3. FTIR data measured for 0.5-15.5 wt % A₆RGD.

XRD



SI Fig. 4. XRD profiles measured for a 12 wt% A_6 RGD solution and for a stalk dried from a 10 wt% A_6 RGD solution.