

## Supplementary data

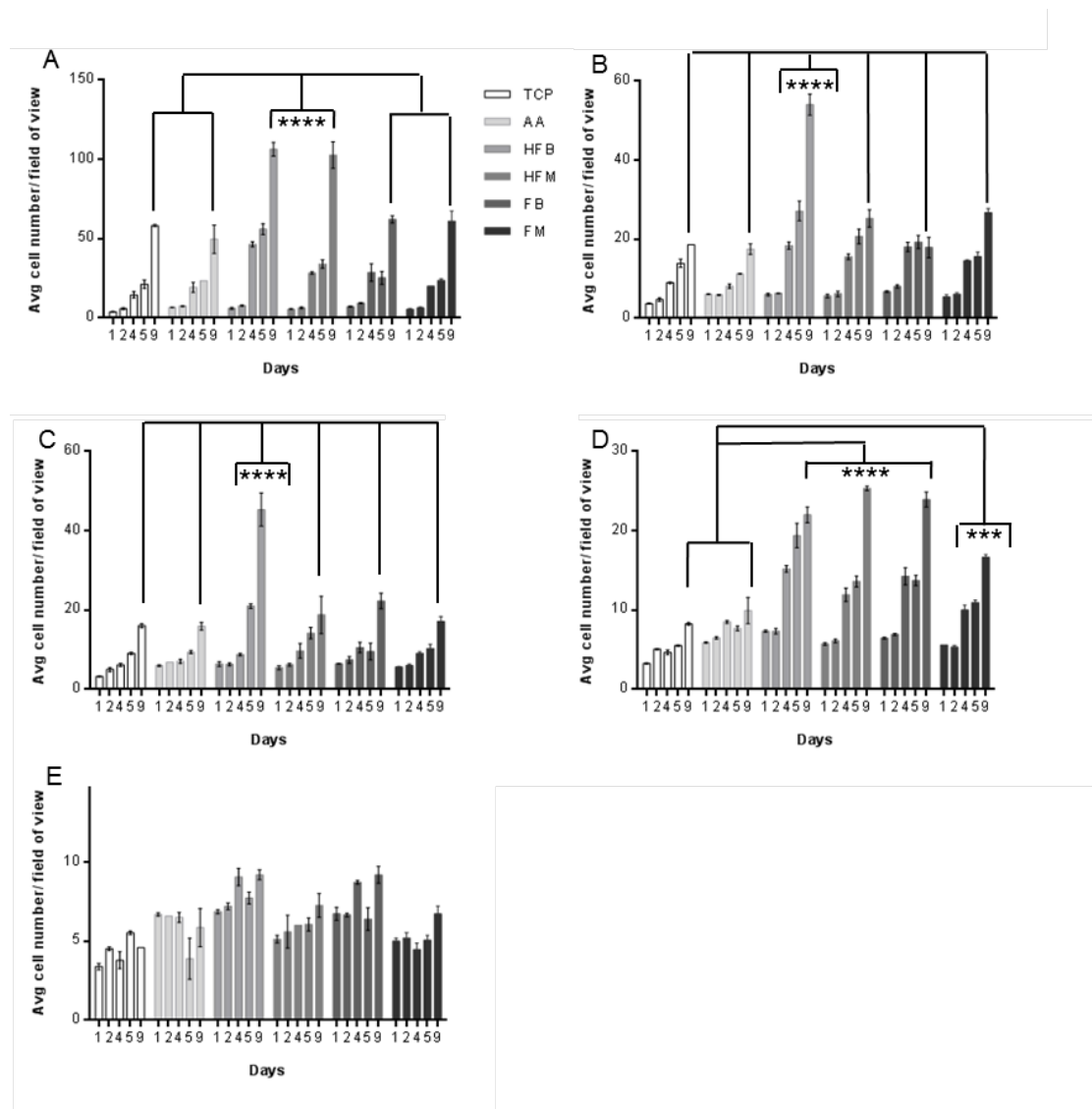


Figure S1A-E; The graphs show the average number of cells at A=5, B=2.5, C=1.25, D=0.625 and E=0 % serum on allylamine plasma polymer coated 48 well plates. The results for cell number were counted for the differing conditions investigated i.e. GAG and GF or GF alone, bound or in the media measured after 1, 2, 4, 5 and 9 days (Data expressed as mean  $\pm$  1 SD, n=3). A key is added to distinguish conditions that were outlined in the methods section.

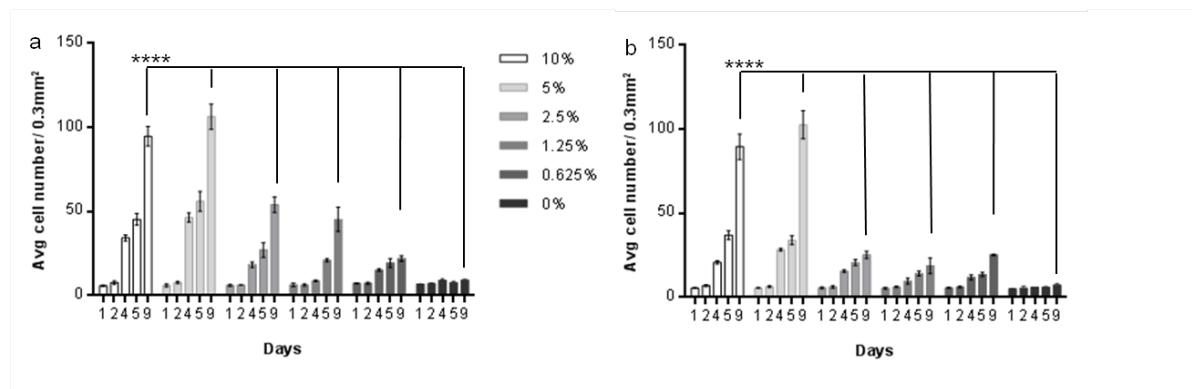


Figure S2A-B; Comparison of GAG and GF both bound (A) and in the media (B) at all serum conditions and days investigated (Data expressed as mean  $\pm$  1 SD, n=3).

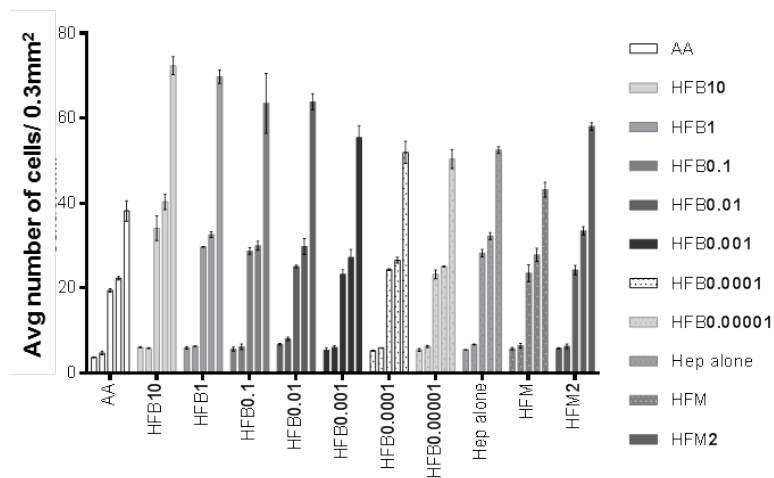


Figure S3; Dilution of growth factor bound to heparin ppAA plates at days 1, 2, 4, 5 and 9 days culture (Data expressed as mean  $\pm$  1 SD, n=3).