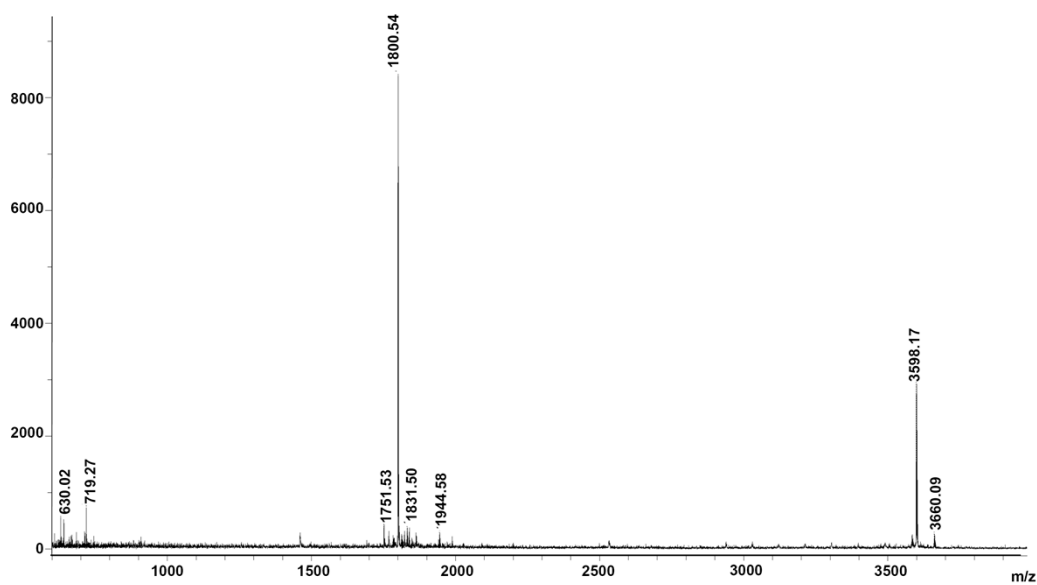


## Supporting Information

### Peptide Decoration of Nanovehicles to Achieve Active Targeting and Pathology-Responsive Cellular Uptake for Bone Metastasis Chemotherapy

*Xuli Wang* \*, *Ye Yang*, *Huizhen Jia*, *Wanjian Jia*, *Scott Miller*, *Beth Bowman*,  
*Jun Feng* \*, and *Fenghuang Zhan* \*



**Figure S1.** MALDI-TOF mass spectrum of CKGHPGGPQAsp<sub>8</sub>