

Electronic Supplementary Material (ESI)

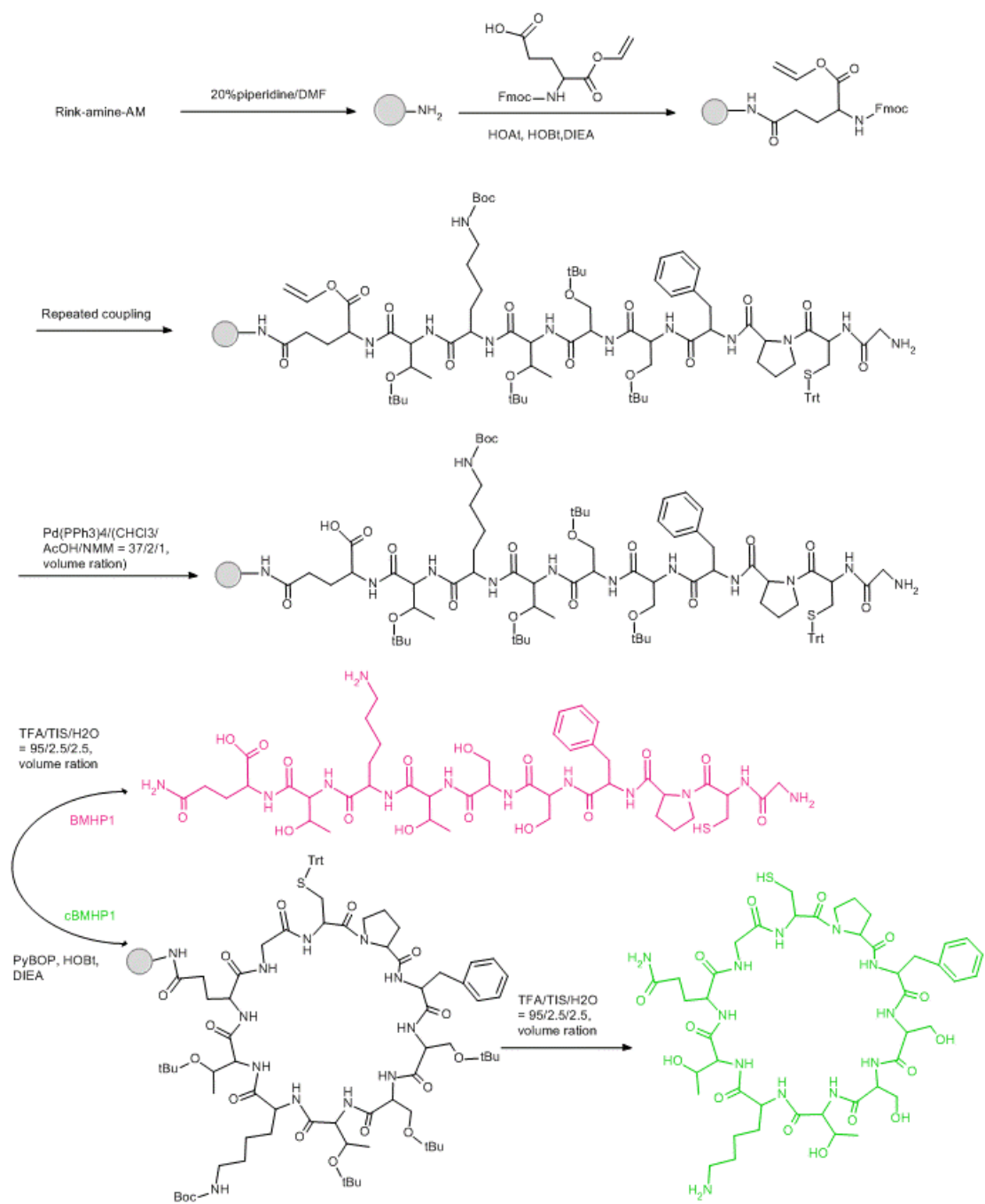
of

**A novel function of BMHP1 and cBMHP1 peptides to induce osteogenic
differentiation of mesenchymal stem cells**

Feng-Yi Cao, Wei-Na Yin, Jin-Xuan Fan, Ren-Xi Zhuo and Xian-Zheng Zhang*

Key Laboratory of Biomedical Polymers of Ministry of Education & Department of
Chemistry, Wuhan University, Wuhan 430072, PR China

* To whom correspondence should be addressed. E-mail: xz-zhang@whu.edu.cn.



Scheme S1. The synthetic scheme of BMHP1 and cBMHP1 peptides

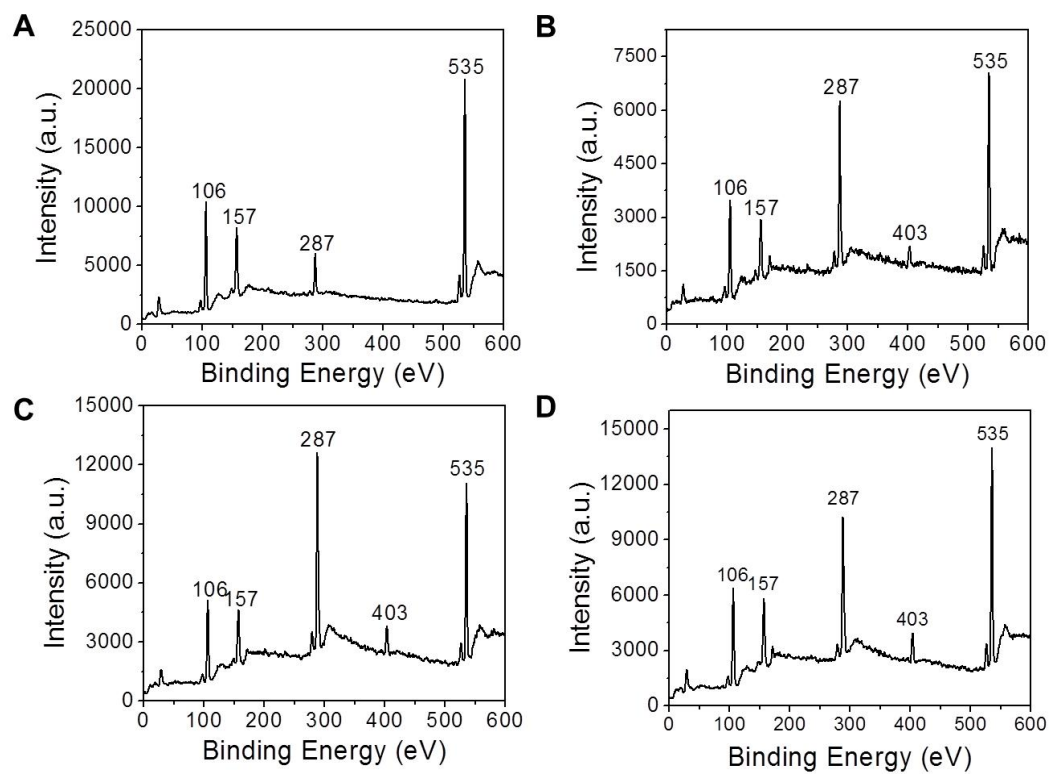


Fig. S1 XPS (N 1s 403, O 1s 535, C 1s 287 and Si 2s 157, 2p 106) spectra of (A) OH-SAMs, (B) NH₂-SAMs, (C) MA-SAMs, (D) 0.125BMHP1-SAMs.