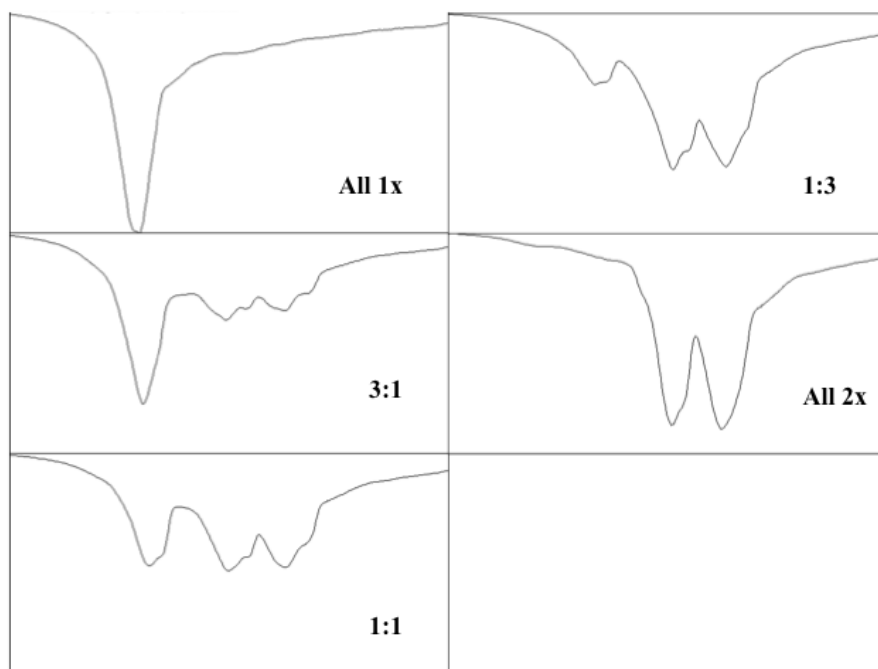


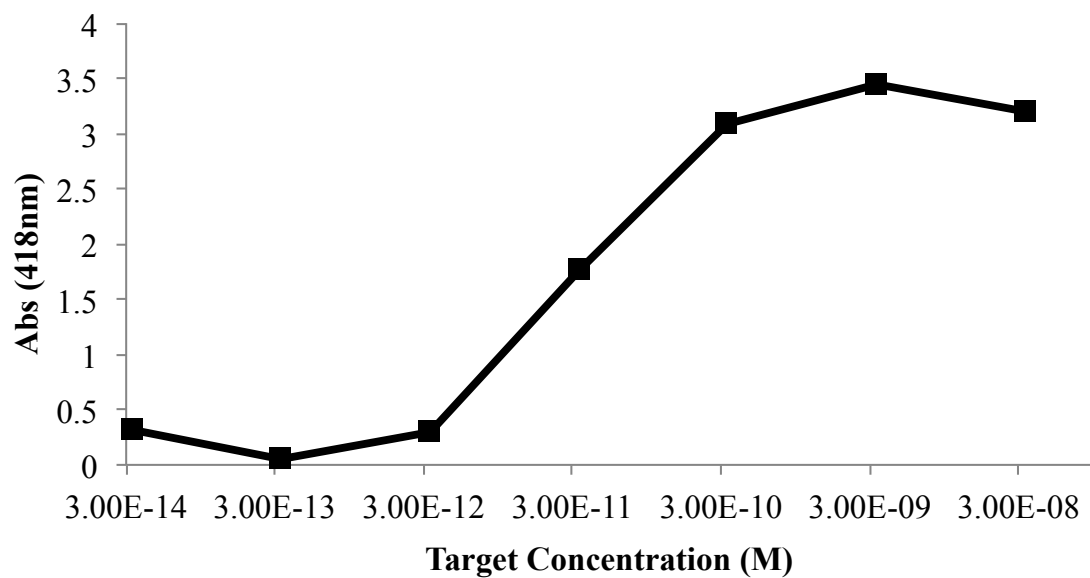
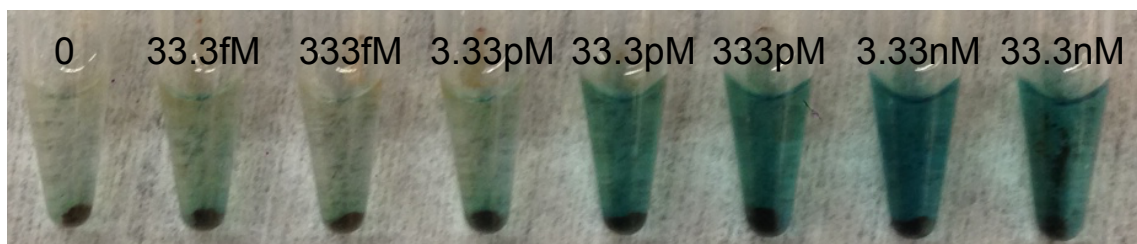
## Supporting Information

### Isothermal Rolling Circle Amplification of Phage Genomes for Rapid Antigen Detection and Typing

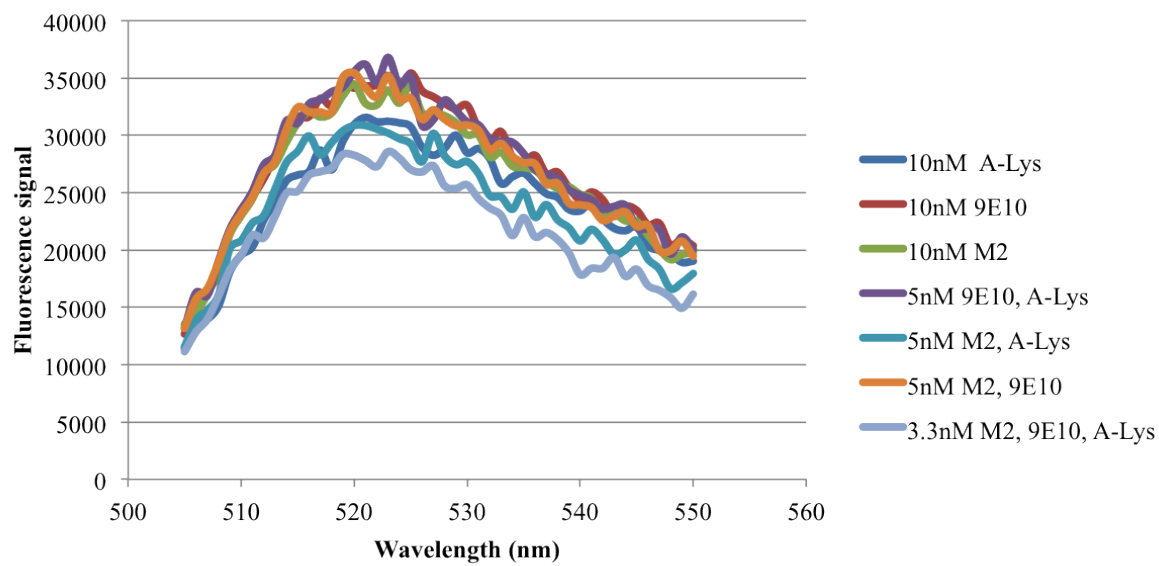
Michael Brasino, Jennifer N. Cha \*



**Figure S1.** Gel analysis of Figure 2 with ImageJ software showing fluorescence intensity moving down each gel lane



**Figure S2.** Results of an ELISA for Rabbit IgG using phage expressing the antibody binding ZZ domain as RCA probes. Since the absorbance values become very small below 3.33pM target, similar signals are obtained at these low antigen concentrations.



**Figure S3.** Fluorescence signals above background for RCA products created in the assay shown in Figure 5.