

Supplemental Information for

Carbon Nanospikes Grown on Metal Wires as Microelectrode Sensors for Dopamine

Alexander G. Zestos¹, Cheng Yang¹, Christopher B. Jacobs¹, Dale Hensley², and B. Jill Venton^{1*}

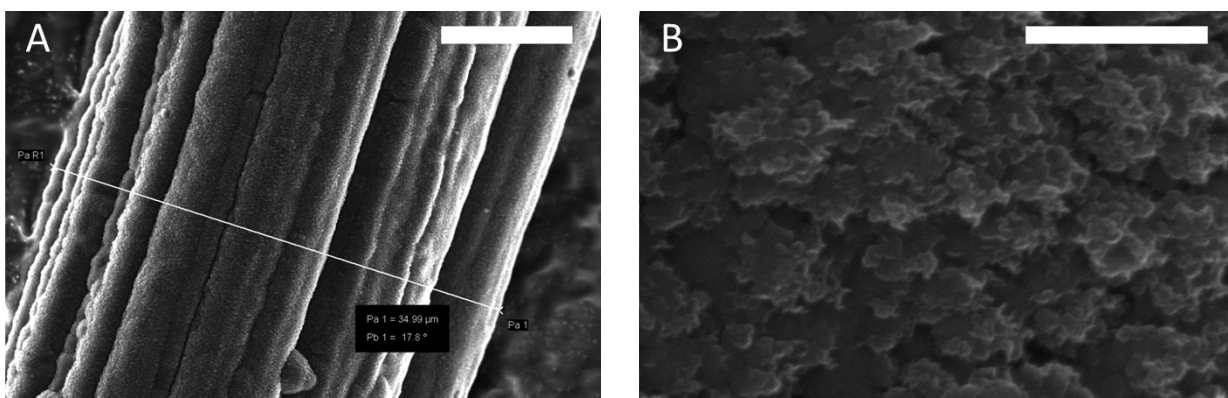


Figure S1. SEM images of A. CNS coated Ta wire (15 min growth time) with the diameter of 35 μm (scale bar: 10 μm) and B. high magnification on the same sample shows larger features than the 7.5 min growth (scale bar: 300 nm).