

Electronic Supplementary Material (ESI) for Analyst.
This journal is © The Royal Society of Chemistry 2015

Supplementary Information

Electrochemical detection of protein by using magnetic graphene-based target enrichment and copper nanoparticles-assisted signal amplification

Jing Zhao,^a Yun Lv,^a Mingyang Kang,^a Keming Wang^{*b} and Yang Xiang^{*c}

^aLaboratory of Biosensing Technology, School of Life Sciences, Shanghai University, Shanghai 200444, P. R. China

^bDepartment of Oncology, the Second Affiliated Hospital of Nanjing Medical University, Nanjing 210011, P. R. China

^cState Key Laboratory of Pharmaceutical Biotechnology, School of Life Science, Nanjing University, Nanjing 210093, P. R. China

* Corresponding author: wangkm_nj@sohu.com;

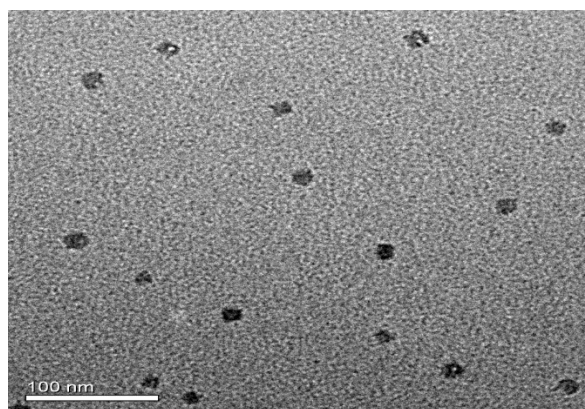


Fig. S1. TEM images of dsDNA-templated CuNPs