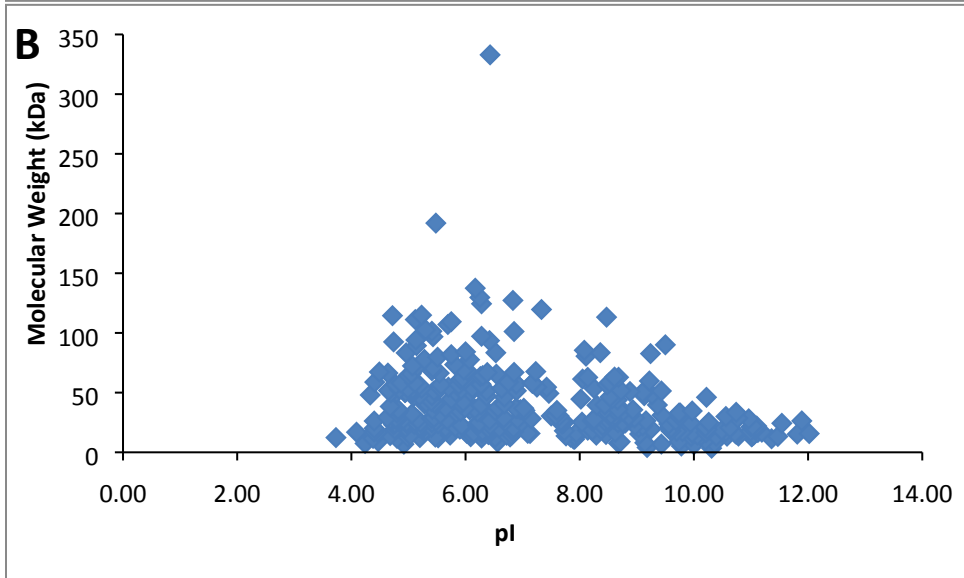
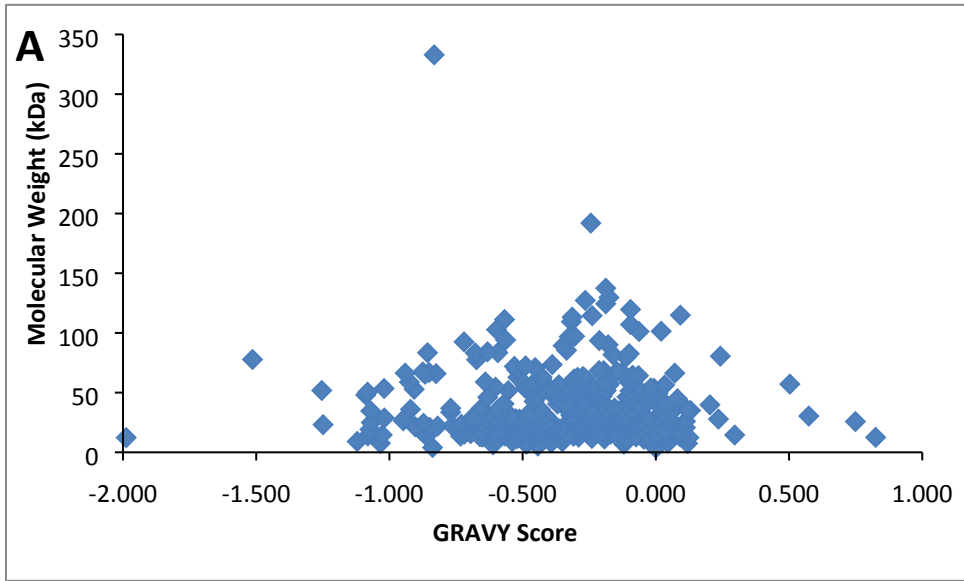
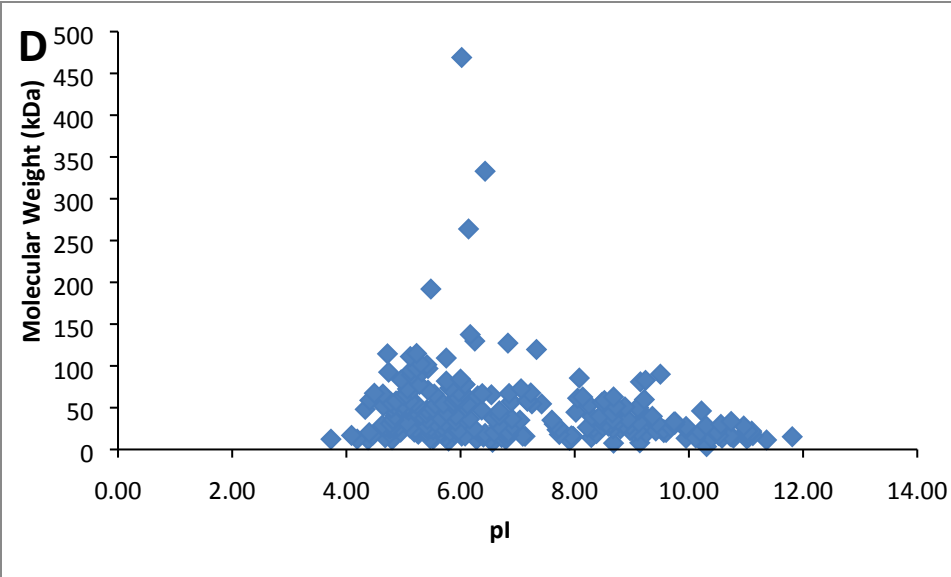
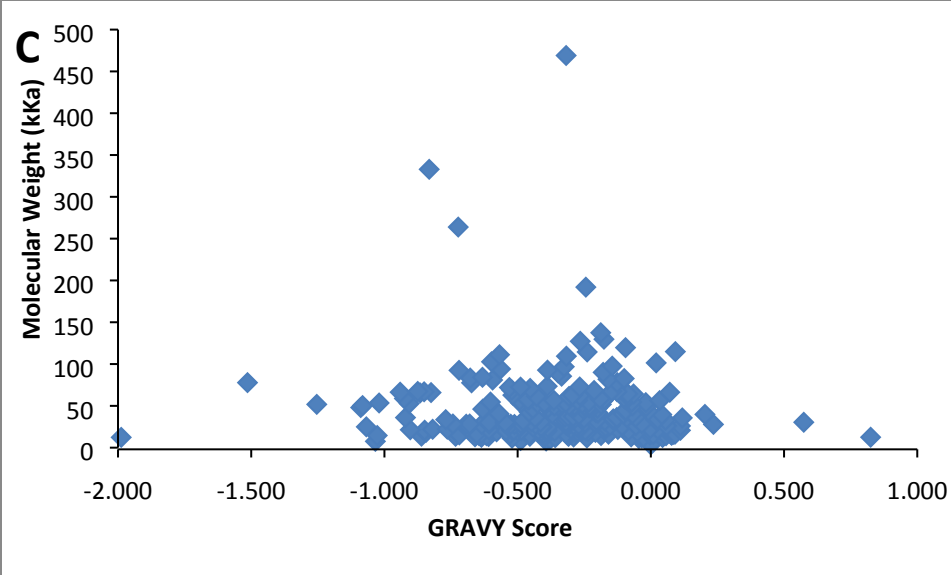


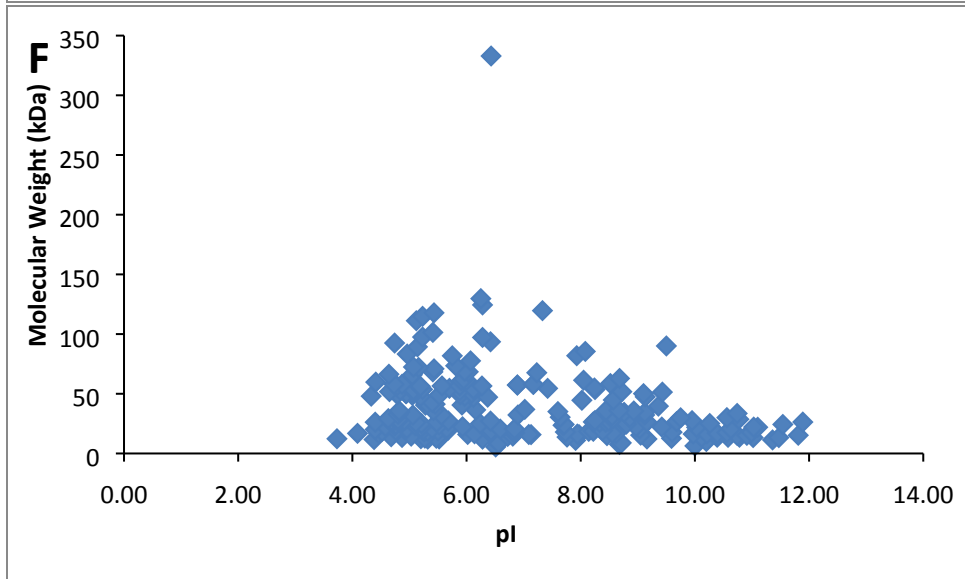
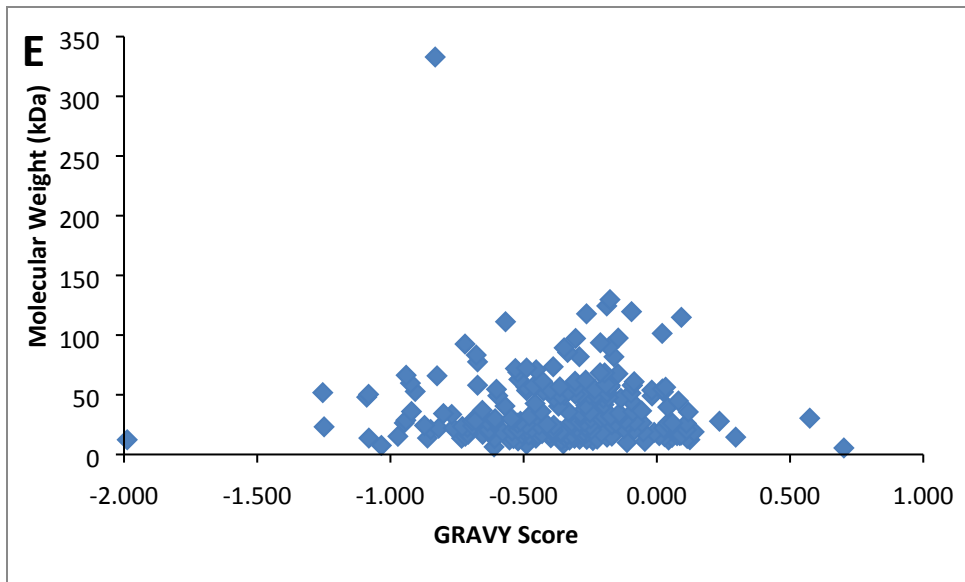
**Sample preparation protocol for bottom-up proteomic analysis of the secretome  
of islets of Langerhans.**

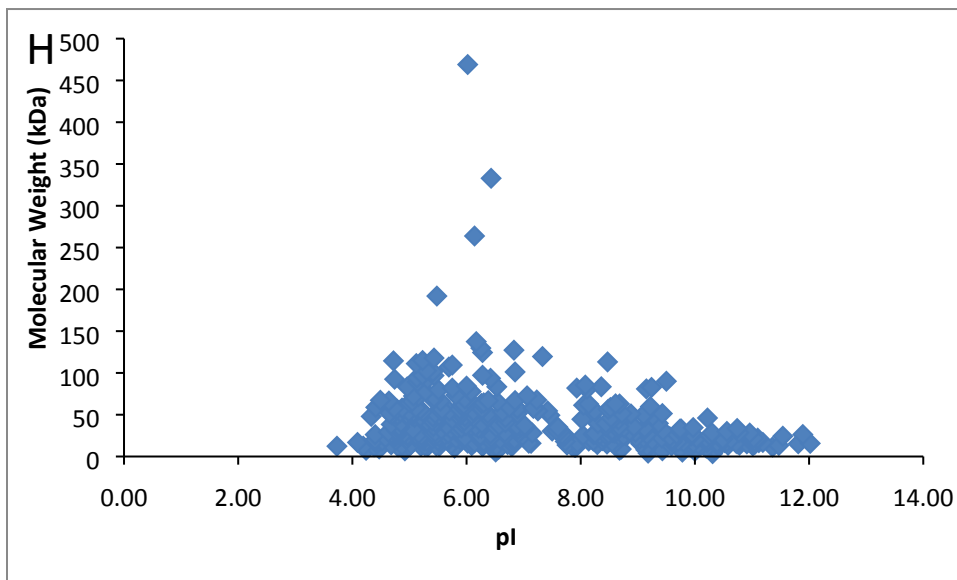
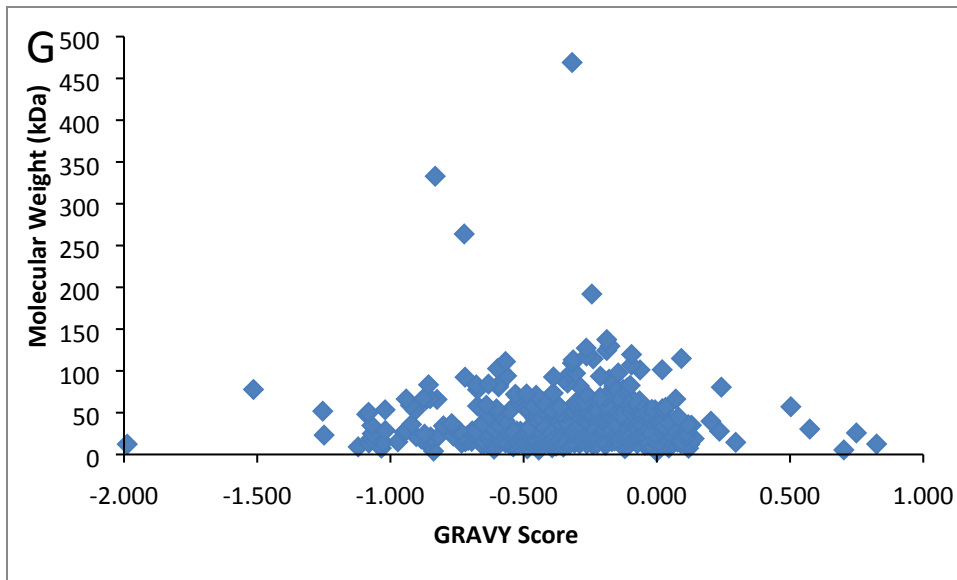
Andrew Schmudlach,<sup>1</sup> Jeremy Felton,<sup>2</sup> Cynthia Cipolla,<sup>2</sup> Liangliang Sun,<sup>1</sup> Robert T.  
Kennedy,<sup>2</sup> Norman J. Dovichi,<sup>1</sup>

Supporting information – Figure S1 (A-F)









Supplemental Figure 1: Distribution of molecular weight, GRAVY scores, and pI for each protein identified in the SDS (A,B), NP-40 (C,D), RapiGest (E,F), and combined samples (H,G). GRAVY scores are a measure of hydrophobicity with more positive numbers indicating hydrophobicity and negative number indicating hydrophilicity.