

Supporting Information

Multiplexed Single-Cell In Situ RNA Analysis by Reiterative Hybridization

Lu Xiao, Jia Guo*

Department of Chemistry and Biochemistry & Biodesign Institute, Arizona State
University, Tempe, Arizona 85287, United States

*To whom correspondence should be addressed.

Tel: (+1) 480-727-2096; Fax: (+1) 480-965-2747; Email: jiaguo@asu.edu.

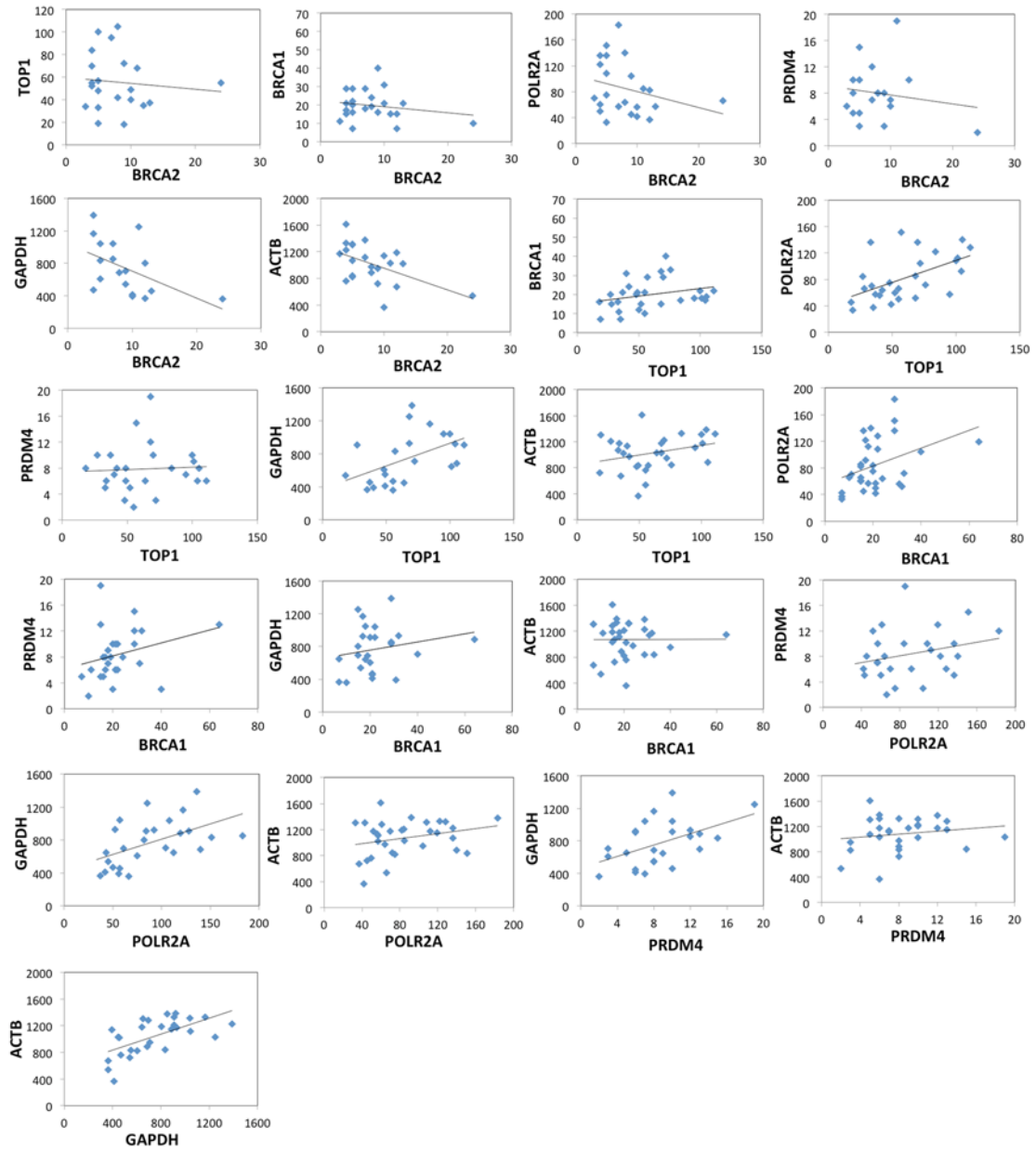


Fig. S1. Raw expression correlation data of each gene pair. Each spot corresponds to one cell with transcripts copy numbers in the x and y axes.