

Supporting Information

Analysis of Bacterial Plasmid DNA by Solid-Phase Microextraction

Omprakash Nacham, Kevin D. Clark, and Jared L. Anderson*

Department of Chemistry and Biochemistry, The University of Toledo, Toledo, OH 43606 USA

Table of contents:	Page No.
1. Figure S1	S2
2. Figure S2	S3
3. Figure S3	S4
4. Figure S4	S5

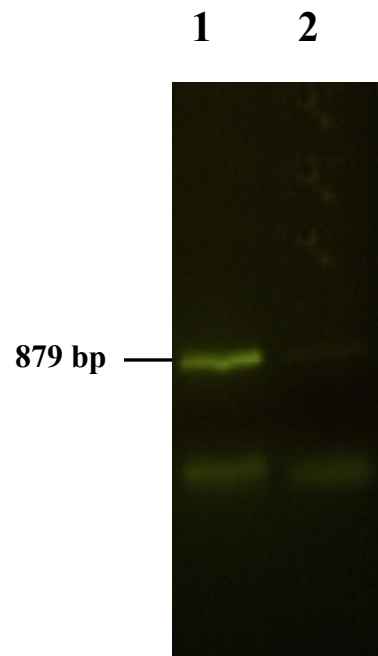


Figure S1. Effect of NaCl on desorption of 6.7 kbp pDNA containing the MTAP gene (879 bp) from PIL fiber. Extraction conditions: pDNA concentration: 20 ng/mL; total solution volume: 10 mL; pH 4.0; extraction time: 20 min; desorption time: 15 min. desorption solution volume: 50 μ L. Lane (1): PCR products obtained following extraction and desorption of PIL fiber in aqueous solution containing 1 M NaCl and 20 mM Tris HCl; Lane (2): PCR products obtained following extraction and desorption of PIL fiber in 20 mM Tris HCl solution.

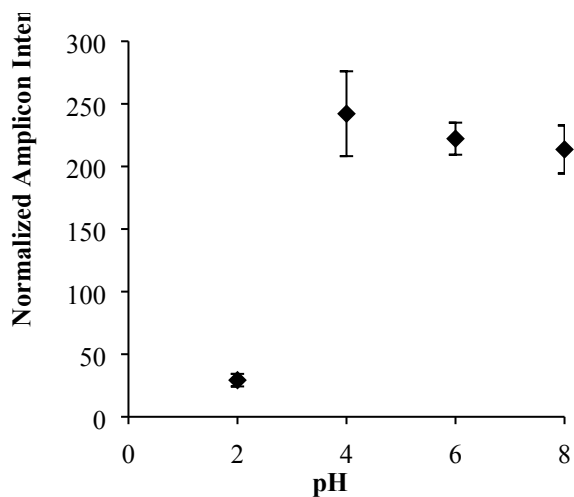


Figure S2. Effect of aqueous solution pH on the intensity of the PCR product obtained following PIL-based SPME of 6.7 kbp pDNA and PCR amplification of an 879 bp gene. The extractions were performed in triplicate. Conditions: pDNA concentration: 20 ng/mL; total solution volume: 10 mL; desorption solution: 1 M NaCl in 20 mM Tris HCl; desorption solution volume: 50 μ L; pH 4.0; extraction time: 20 min; desorption time: 15 min.

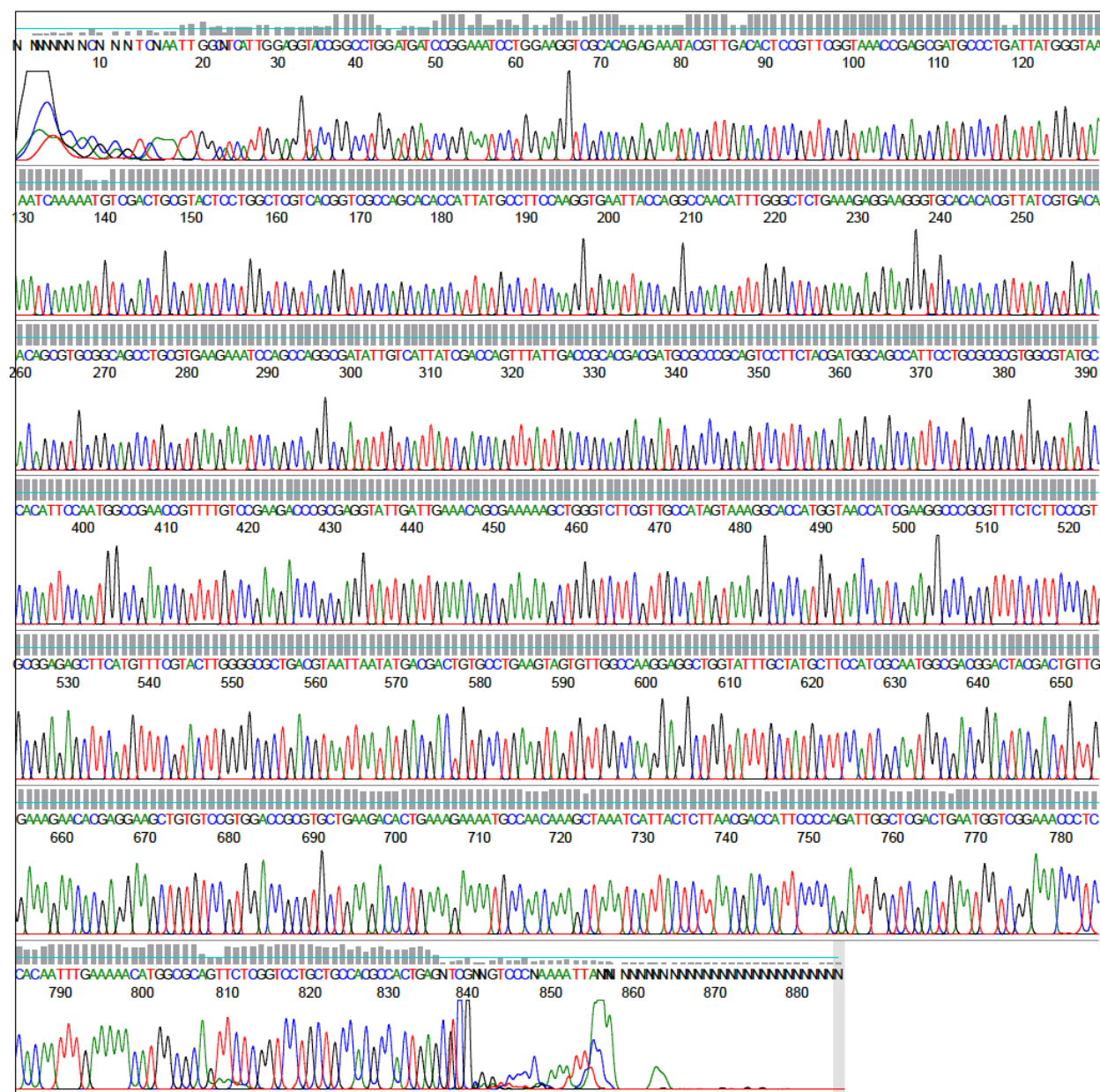


Figure S3. Electropherogram from the sequencing of the MTAP gene amplified from pDNA extracted by the PIL sorbent coating.

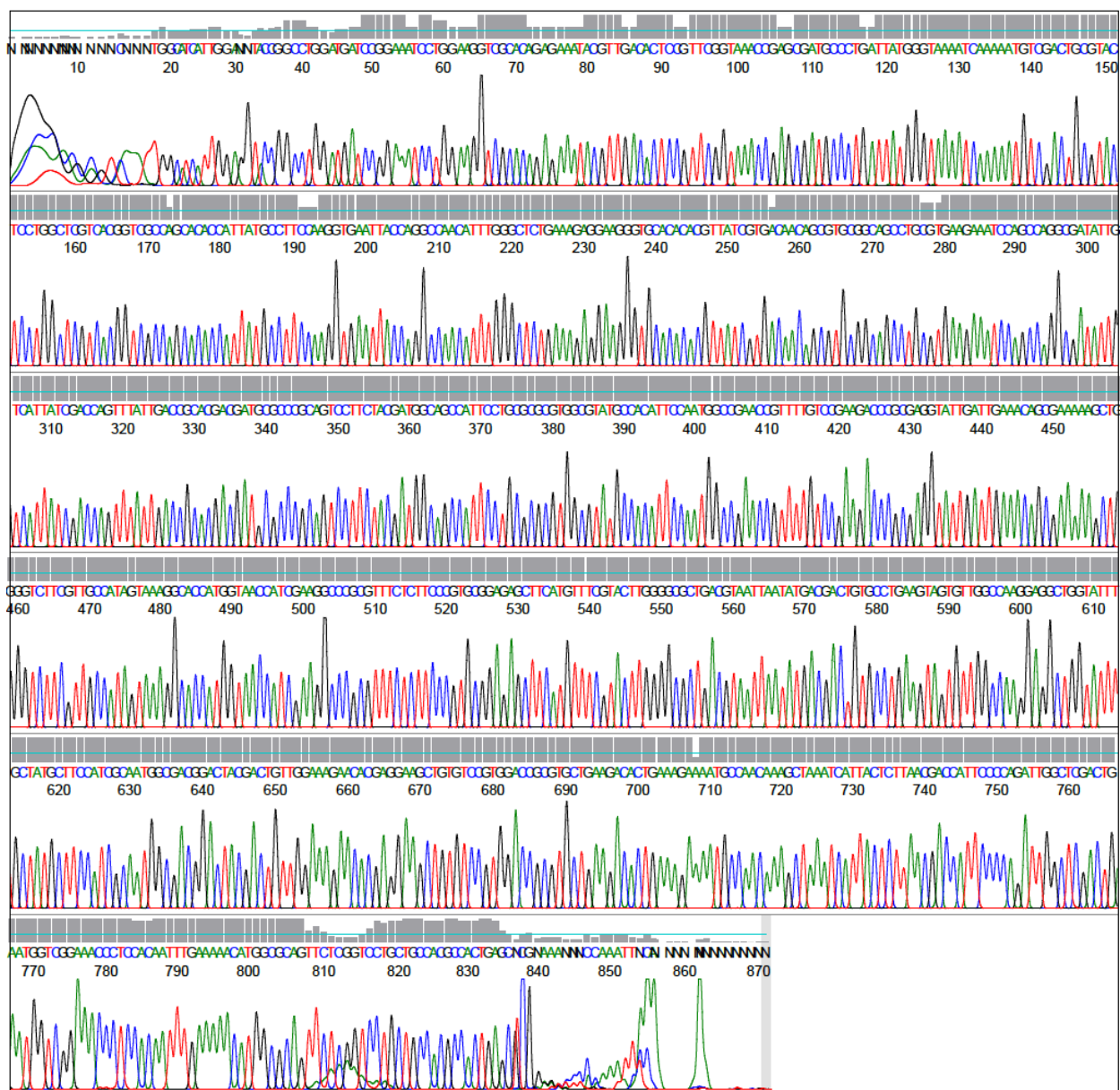


Figure S4. Electropherogram from the sequencing of the MTAP gene amplified from standard pDNA.