

Fig.S1 CV of Pd NWAs modified electrode in 0.5 M H₂SO₄, Scan rate: 50 mV s⁻¹

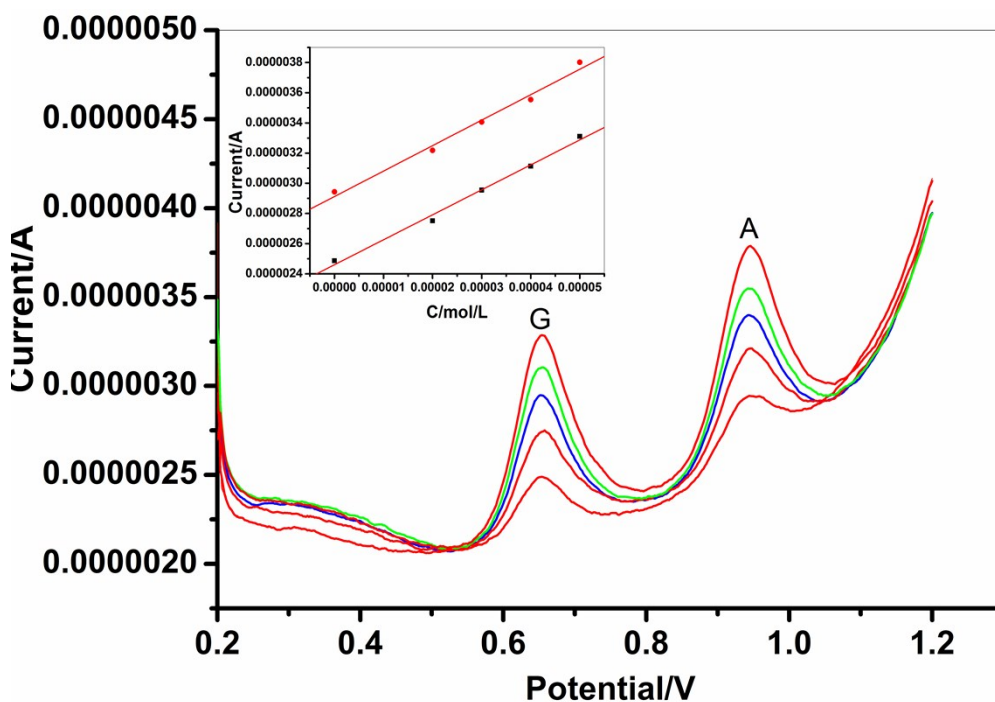


Fig. S2 DPV response of PdNWs modified electrode for the detection of G and A in fish sperm DNA sample ss-DNA sample in pH 7.1 PB solution. Inset: Plot of anodic peak currents of adenine(A) and guanine(G) versus the concentration of A and G. Concentrations from inner to outer of curves: G (0, 20, 30, 40, 50 μ M), A (0, 20, 30, 40, 50 μ M).