

Supporting Information

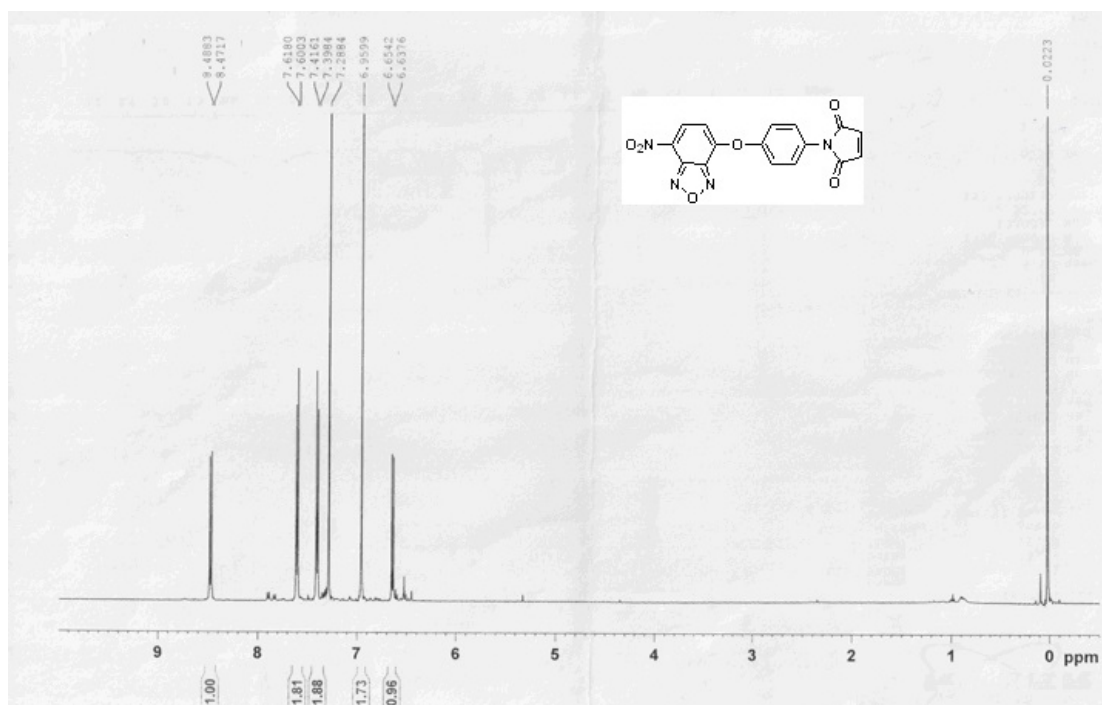
A Simple and New Fluorescent and Colorimetric Probe Based on NBD-Maleimide for Detecting Thiols in Living Cells

Youming Shen,^{ab} Chang Liu,^b Youyu Zhang,^{*b} Xiangyang Zhang,^{*a} Chunxiang Zhang,^a

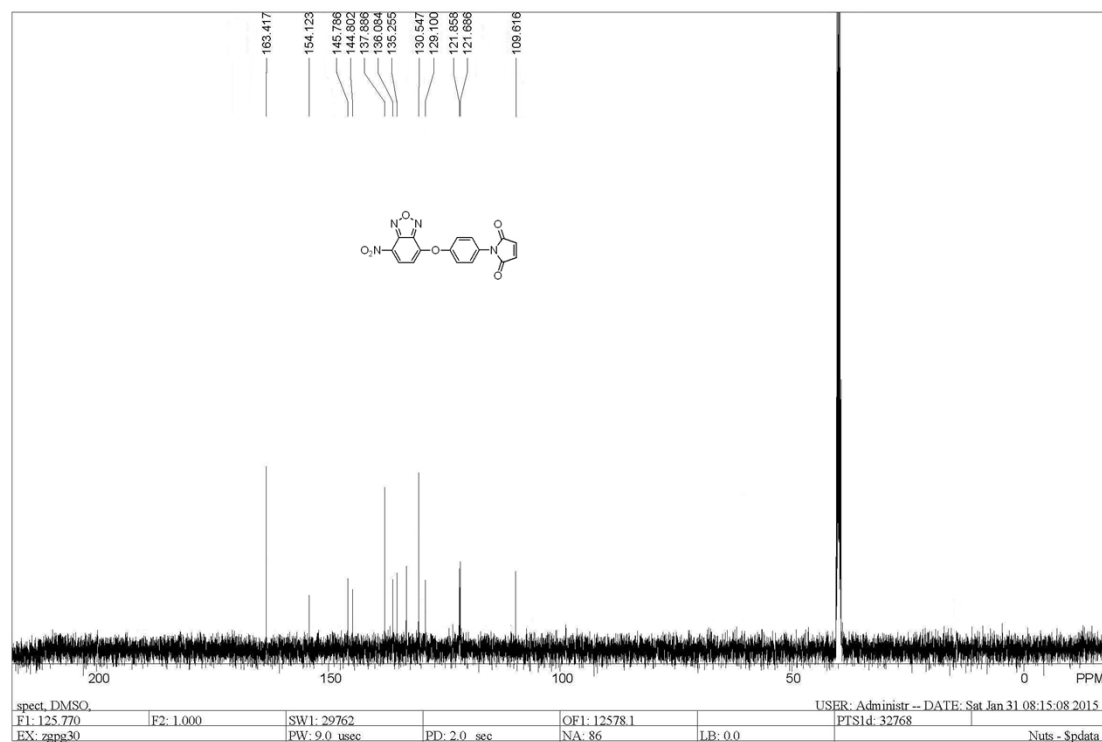
Junling Jin,^a Xuewen Liu,^a Haitao Li,^b Shouzhuo Yao^b

^a College of Chemistry and Chemical Engineering, Hunan University of Arts and Science, ChangDe, 415000, PR China E-mail: zhangxiangy06@163.com

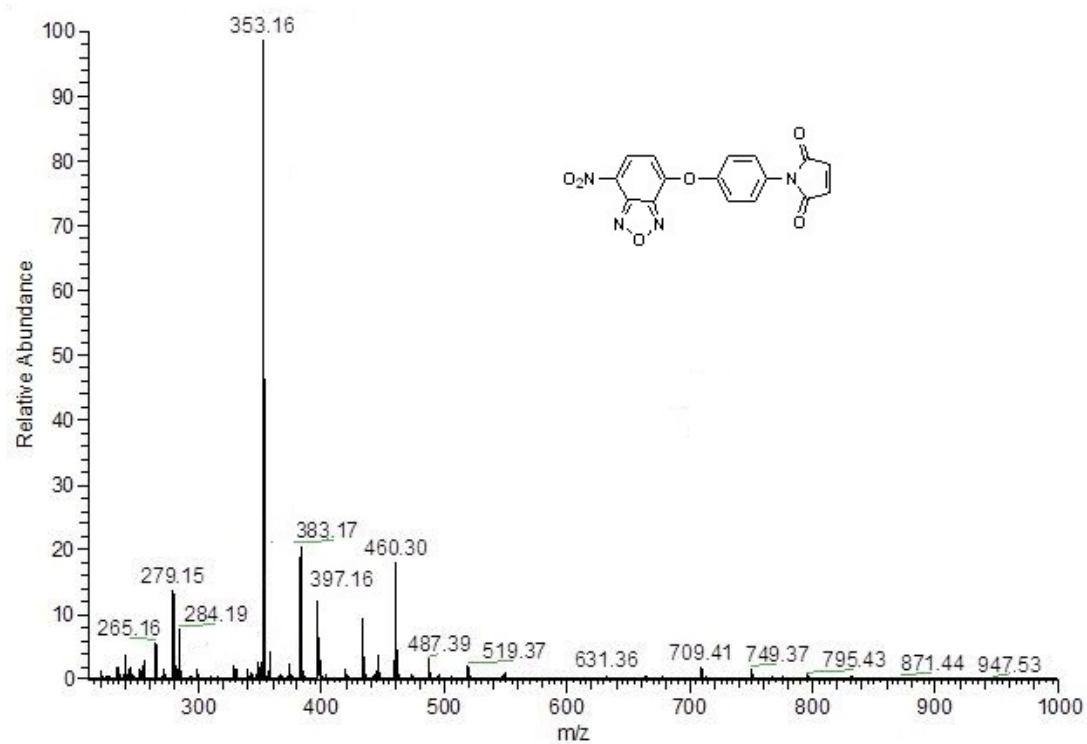
^b Key Laboratory of Chemical Biology and Traditional Chinese Medicine Research (Ministry of Education), College of Chemistry and Chemical Engineering, Hunan Normal University, Changsha 410081, PR China E-mail: zhangyy@hunnu.edu.cn



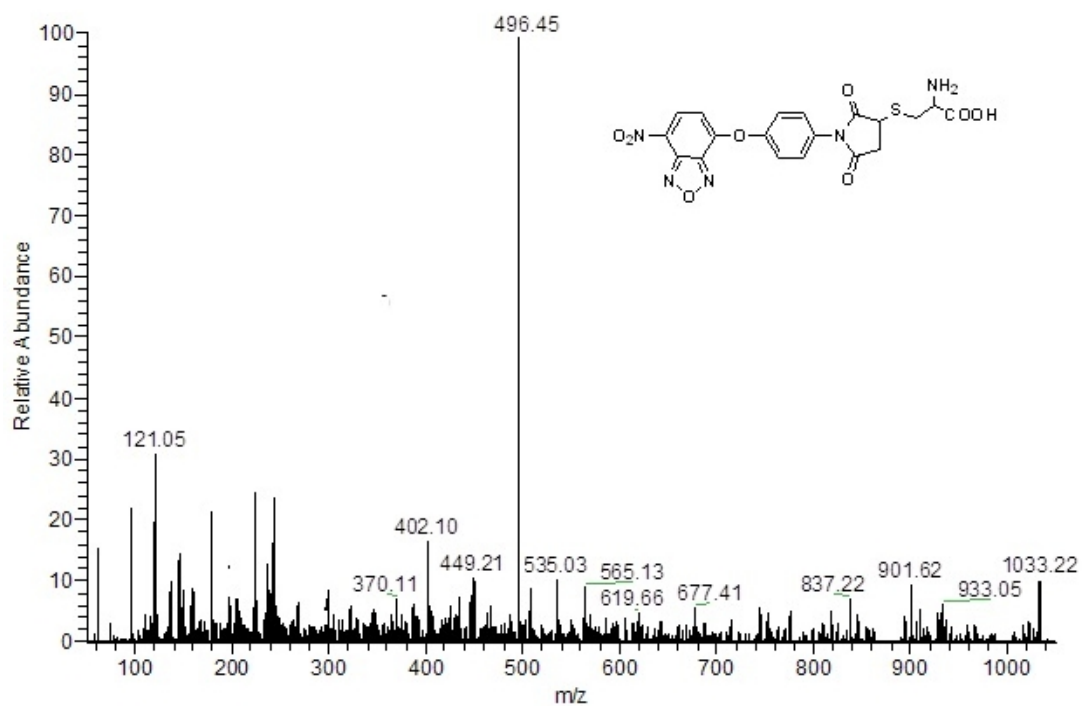
S1



S2



S3



S4