

Electronic Supplementary Information

Electrosensing of an alpha-adrenergic agonist psychoactive methyl dopa using sodium bentonite-graphene oxide nanocomposite

Nagappa L Teradal^a, Prashanth S Narayan^a, Jaldappagari Seetharamappa^{a*}, Ashis K Satpati^b

^aDepartment of Chemistry, Karnatak University, Dharwad-580 003, India.

E-mail: jseetharam@yahoo.com, drjseetharamappa@kud.ac.in;

Fax: +91-836-2747884; Tel: +91 836-221528;

^bAnalytical Chemistry Division, Bhaba Atomic Research Centre, Trombay, Mumbai-400 085, India.

Table S1 Characteristics of the calibration plot for MD.

	Chronoamperometry	DPV
Linearity range, μM	1.13 – 40.6	0.1 - 60
LOD, μM	0.962	0.0403
LOQ, μM	3.194	0.134
Inter-day assay RSD* (%)	1.68	2.04
Intra-day assay RSD* (%)	2.03	2.83

* For 5 μM MD

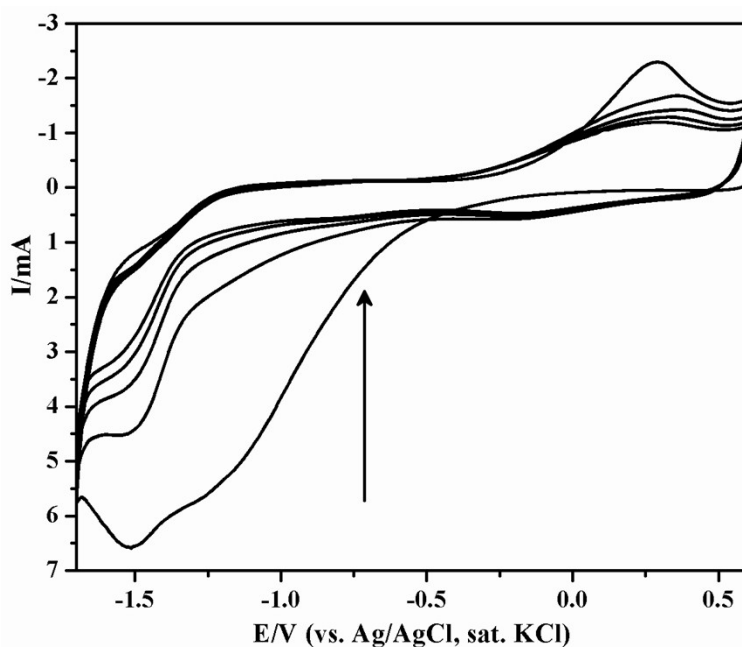


Fig. S1 Cyclic voltammograms of Bent-GO film at GCE surface in phosphate buffer of pH 6. Scan rate of 100 mV s^{-1} .

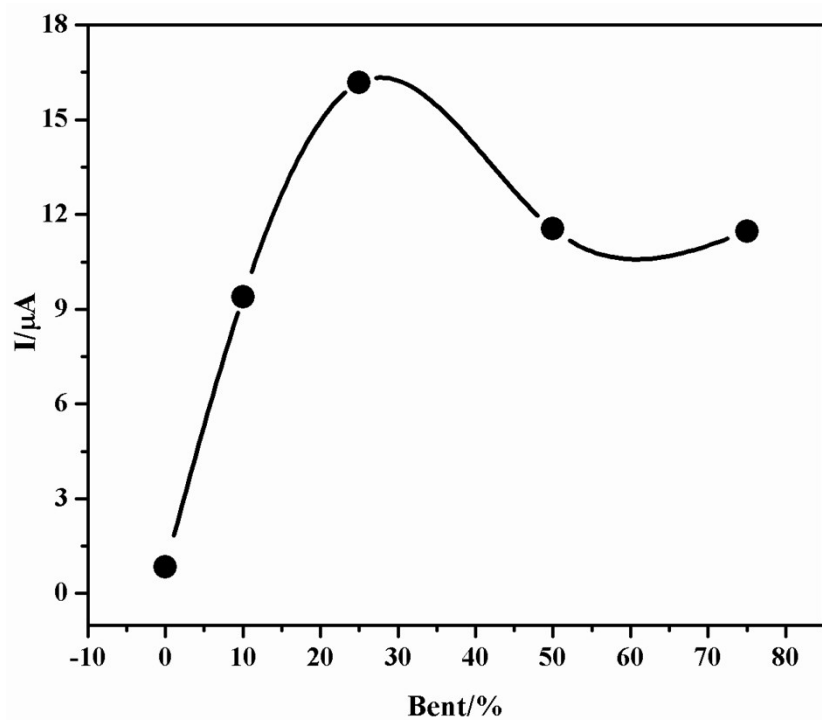


Fig. S2 The dependence of oxidation peak current on the amount of Bent.

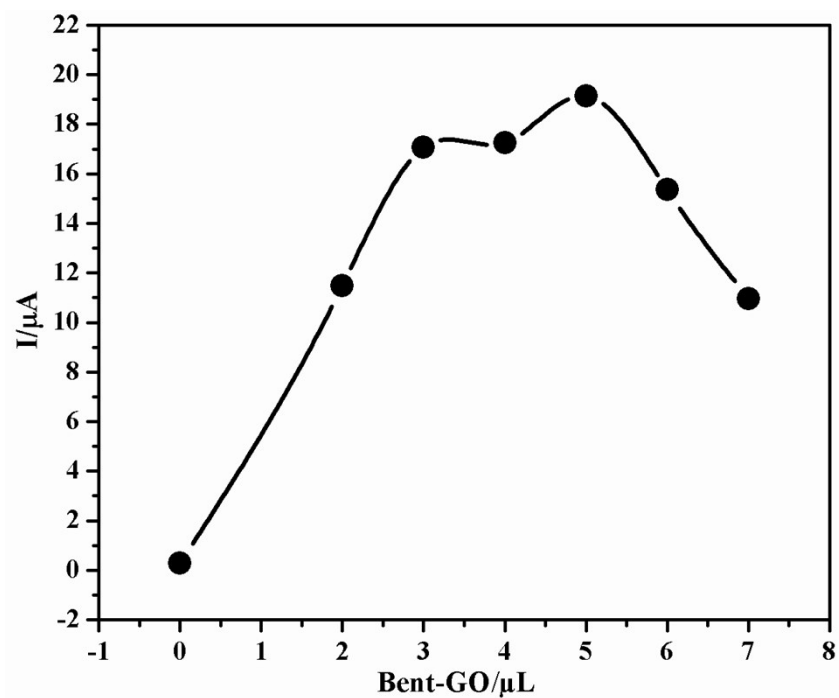


Fig. S3 Effect of the amount of Bent-GO suspension on oxidation peak current 5 μM MD in phosphate buffer of pH 3. Scan rate: 100 mV s^{-1} , $t(\text{acc})$: 90 s.

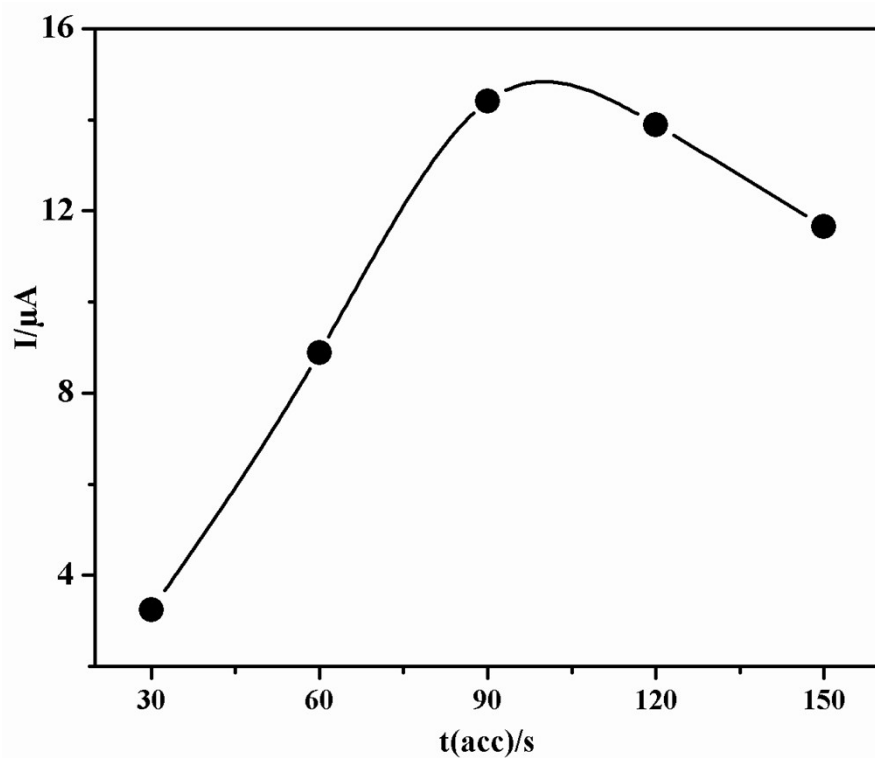


Fig. S4 The effect of accumulation time, $t(\text{acc})/\text{s}$ on peak current of $5 \mu\text{M}$ MD at Bent-ErGO/GCE in phosphate buffer of pH 3.

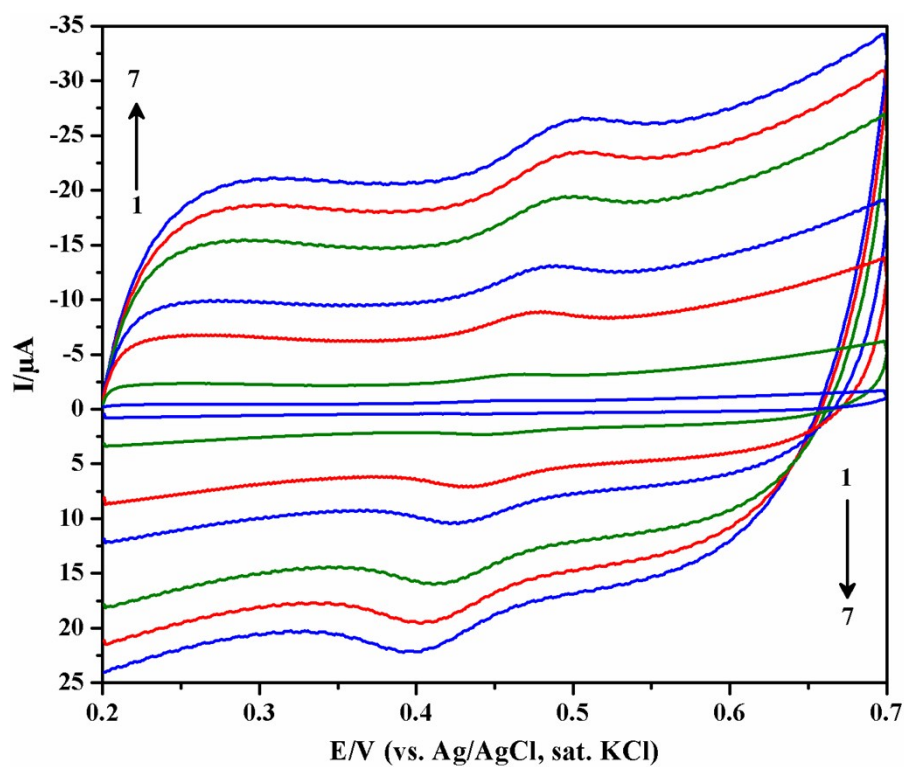


Fig. S5 Cyclic voltammograms of $5 \mu\text{M}$ MD on Bent-ErGO/GCE at different scan rates ($10 - 550 \text{ mV s}^{-1}$) in phosphate buffer of pH 3. $t(\text{acc})$: 80 s.