

Design of a novel Schiff-base fluorescent sensor for Al³⁺: experimental and computational studies

Jing-Can Qin¹, Xiao-ying Cheng¹, Kai-chao Yu², Ran Fang¹, Ming-fang Wang¹,
Zheng-yin Yang*¹

¹State Key Laboratory of Applied Organic Chemistry, College of Chemistry and
Chemical Engineering, Lanzhou University, Lanzhou 730000, PR China

²Hubei Key Laboratory of Bioinorganic Chemistry & Materia Medica, School of
Chemistry and Chemical Engineering, Huazhong University of Science and
Technology, Wuhan 430074, PR China

** Corresponding author. Tel.: +86 931 8913515; Fax: +86 931 8912582; e-mail:
yangzy@lzu.edu.cn (Z.Y. Yang)

Fig. S1 The ¹H NMR of HL.

Fig. S2 The IR spectra of HL

Fig. S3 the binding constant is based on the fluorescence titration data

Fig. S4. The detection limit of HL

Fig. S5. The ESI-MS spectra of L- Al.

Fig. S6. The IR spectra of L- Al.

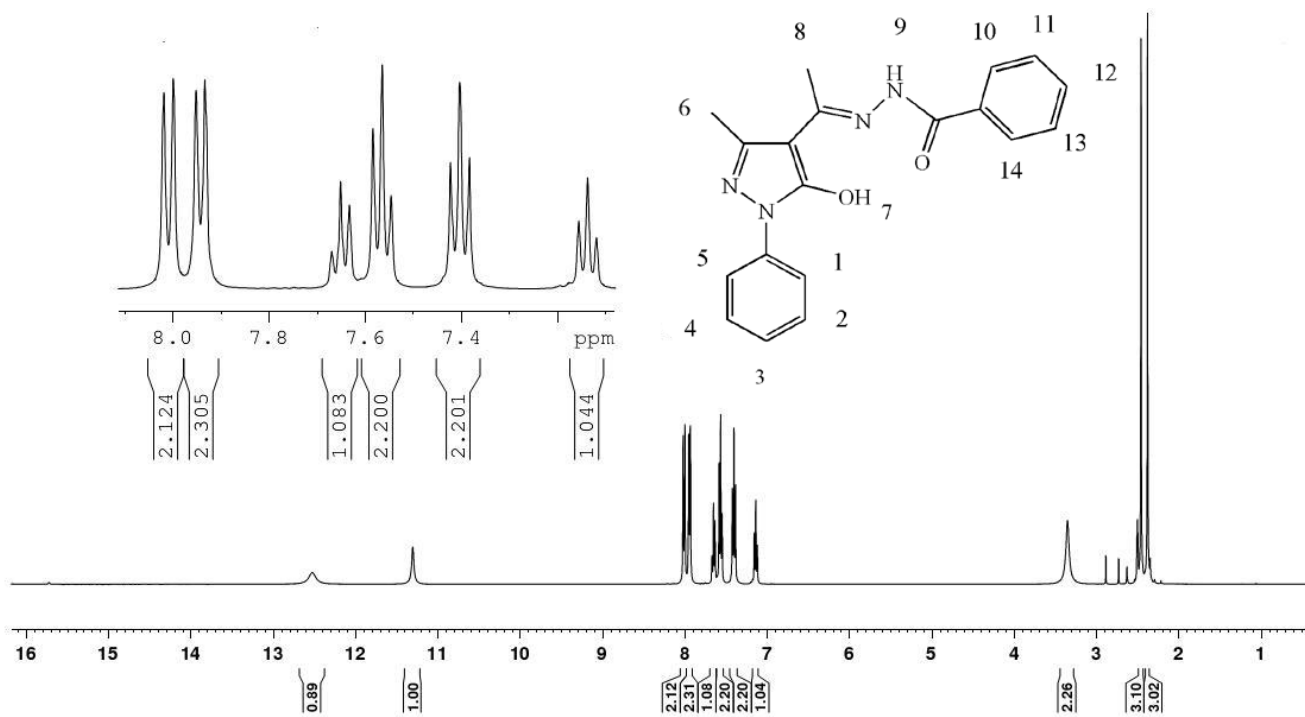


Fig. S1 The ¹H NMR of HL

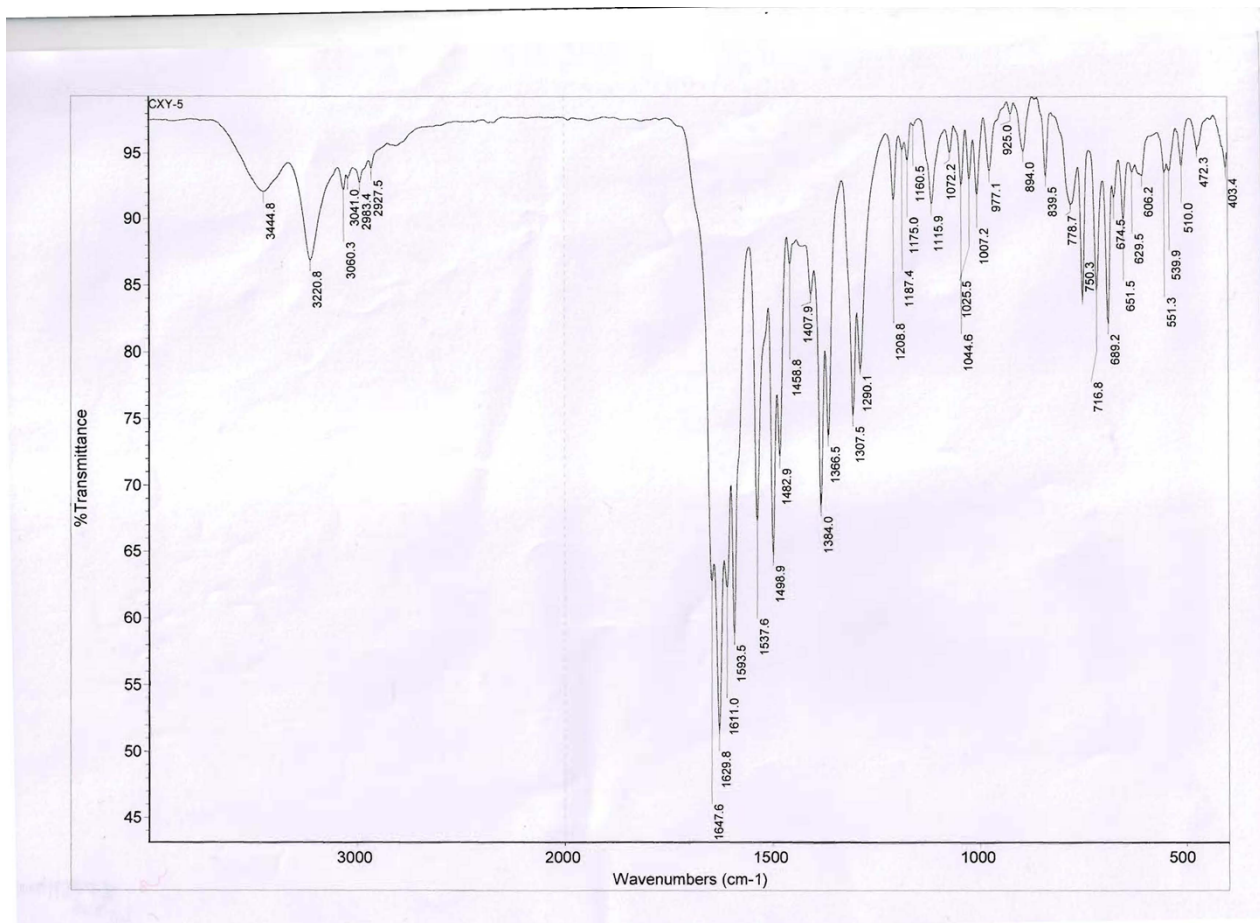


Fig. S2. The IR of HL

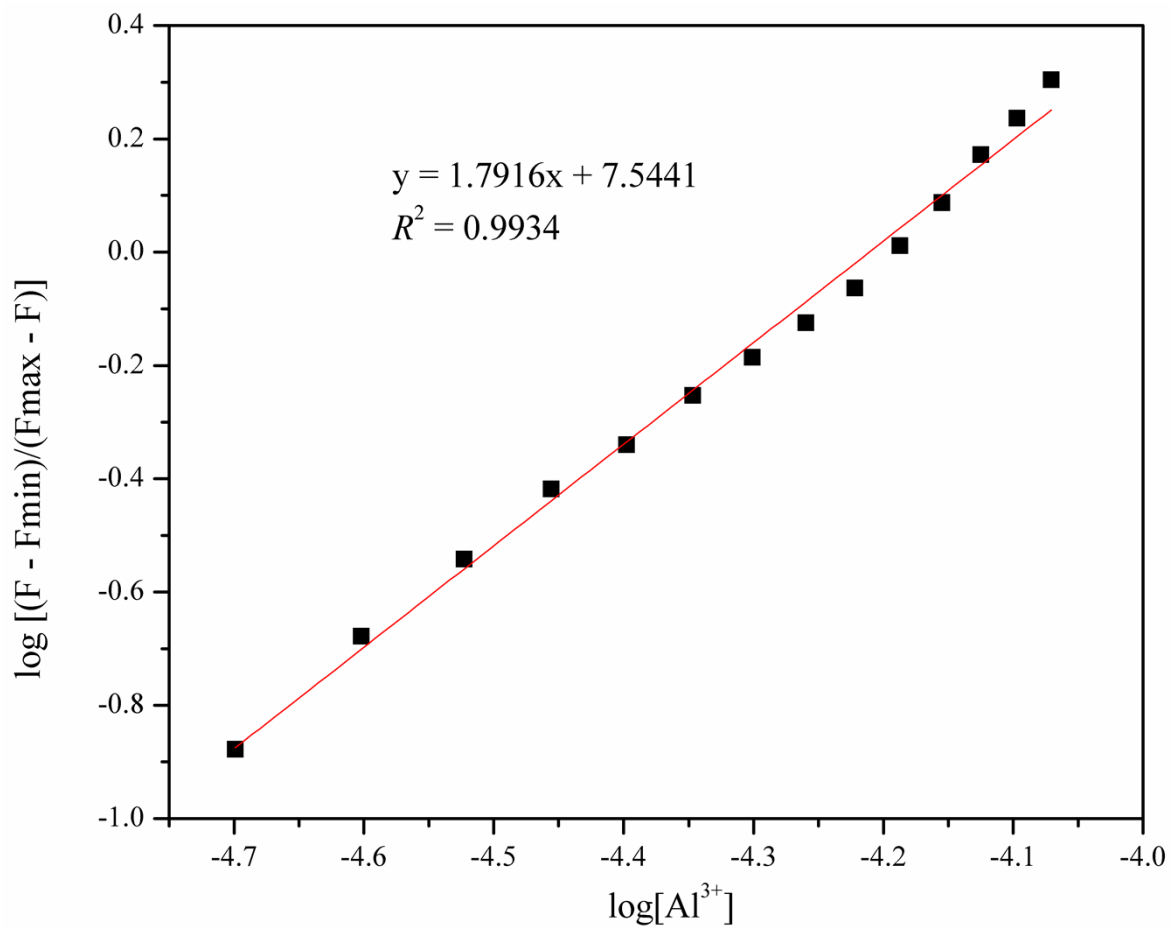


Fig. S3 the binding constant is based on the fluorescence titration data

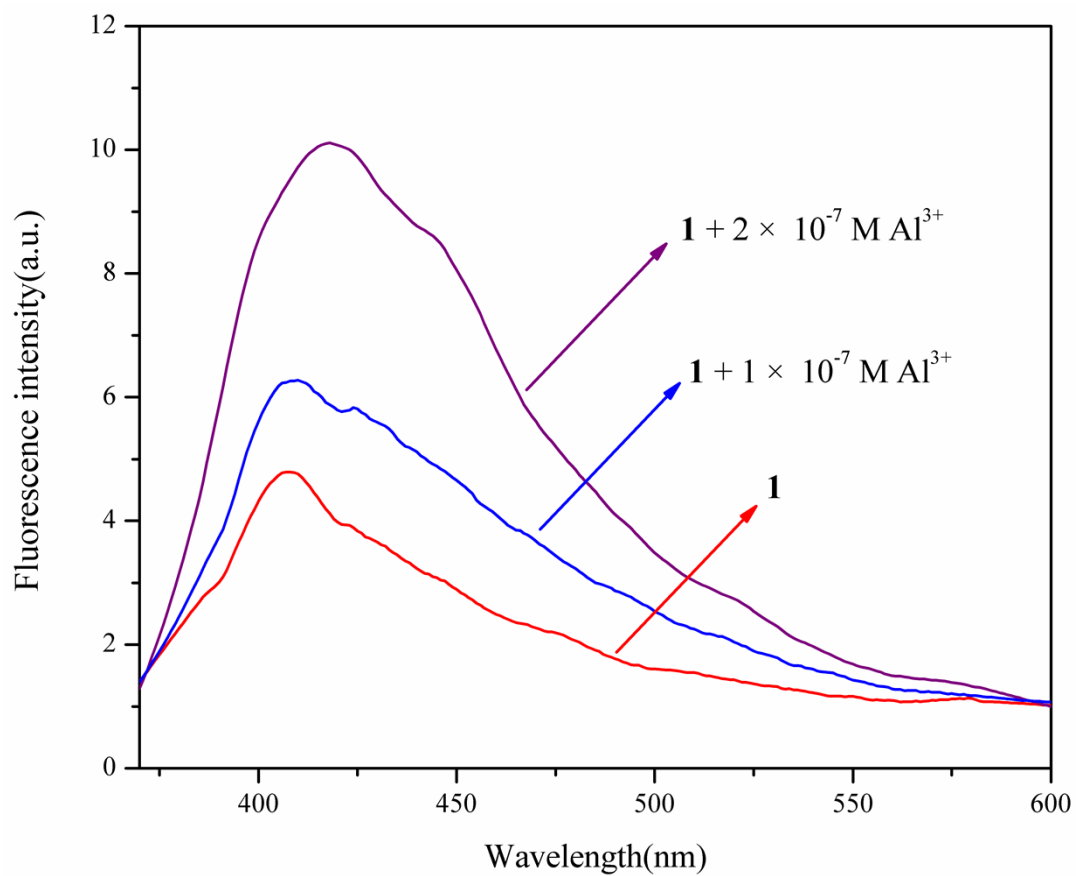


Fig. S4. The detection limit of HL

Generic Display Report

Analysis Info

Analysis Name D:\Data\YANGY_MS\New\CHENGXIAOYING121102.d
Method LOWmass.m
Sample Name default
Comment

Acquisition Date 11/2/2012 16:53:26

Operator ESQ6K
Instrument esquire6000

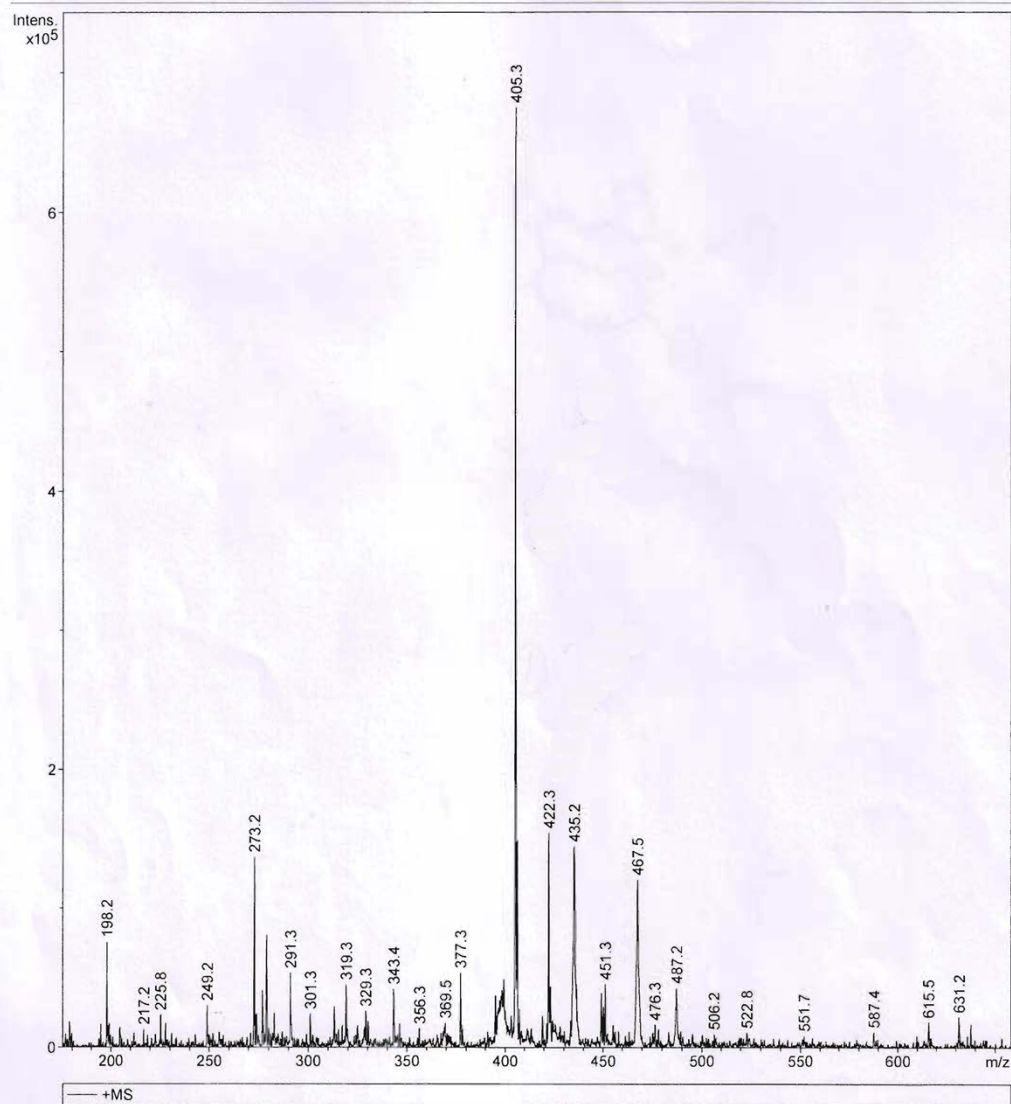


Fig. S5. The ESI-MS spectra of L- Al.

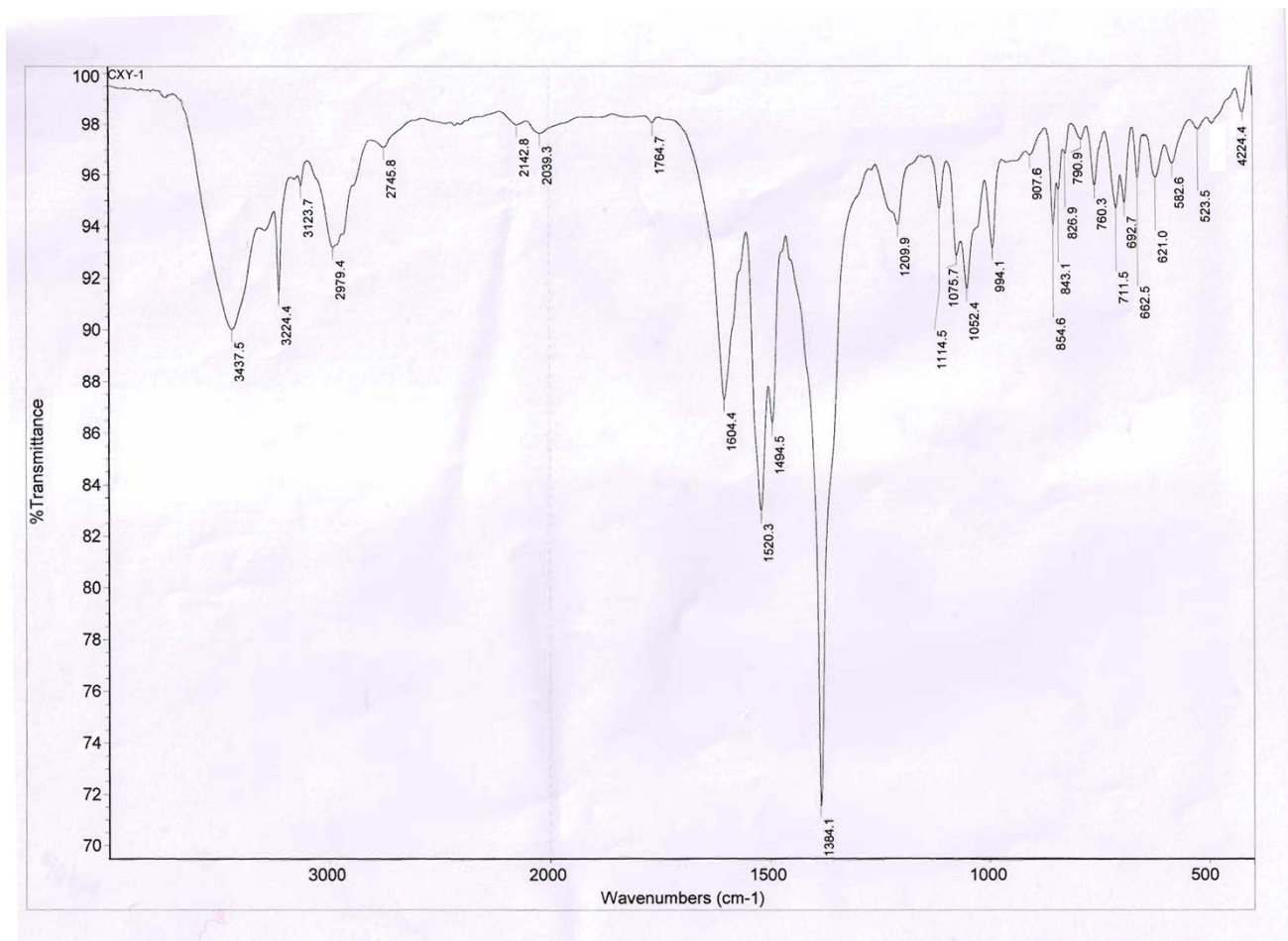


Fig. S6. The IR spectra of L- Al.