

Electronic Supplementary Information (ESI)

Fig. S1 Effect of mobile phase flow rate on the back pressure of columns E and F.

Mobile phase: a: water, b: MeOH, c: ACN.

Fig. S2 The pore size distribution curves of columns E and F.

Fig. S3 The N₂ adsorption-desorption isotherms of columns A, E, and F.

Fig. S4 The cross section image of the column.

Table S1 The column efficiency of day-to-day for benzene.

Table S2 The column efficiency of column-to-column for benzene.

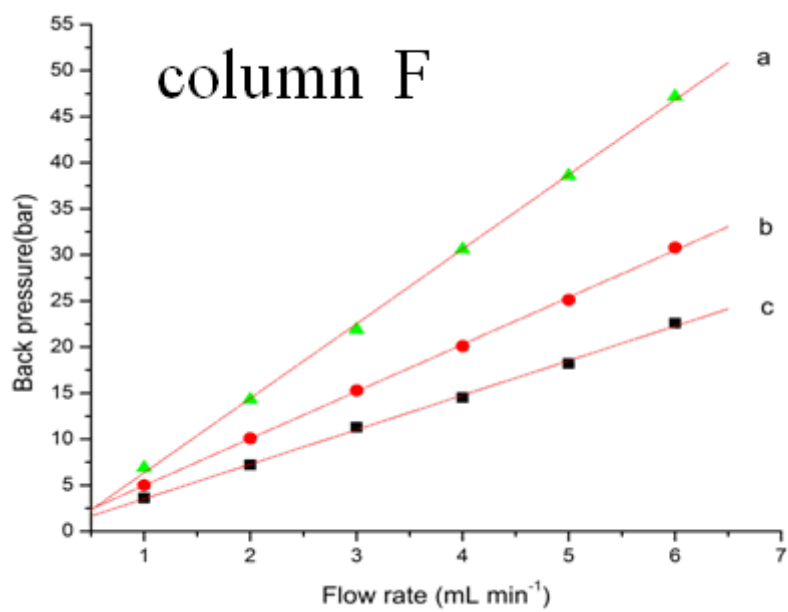
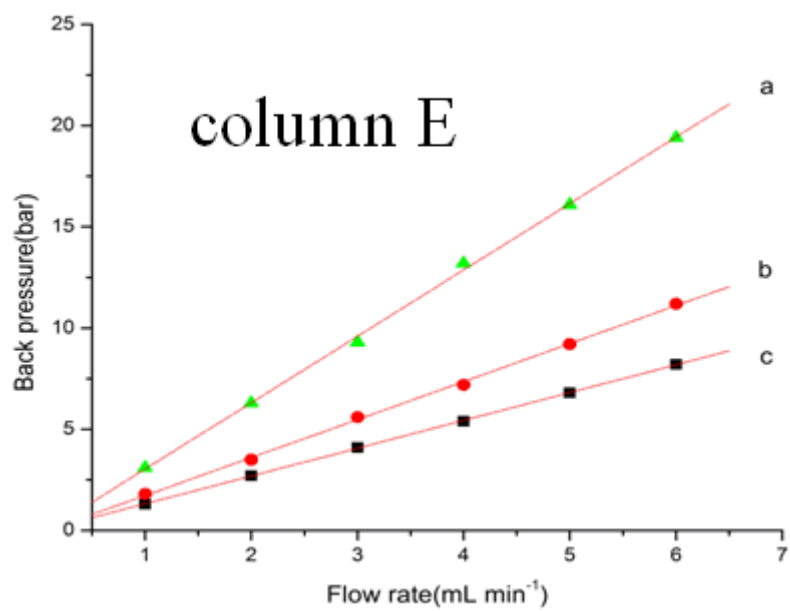


Fig. S1

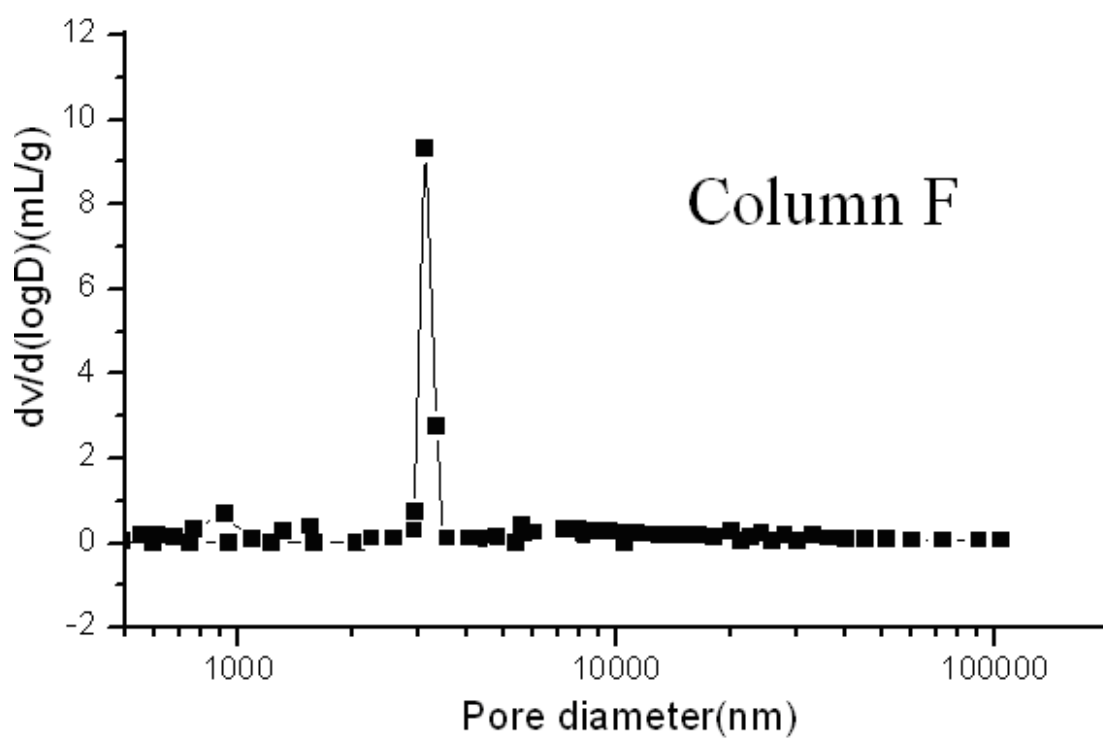
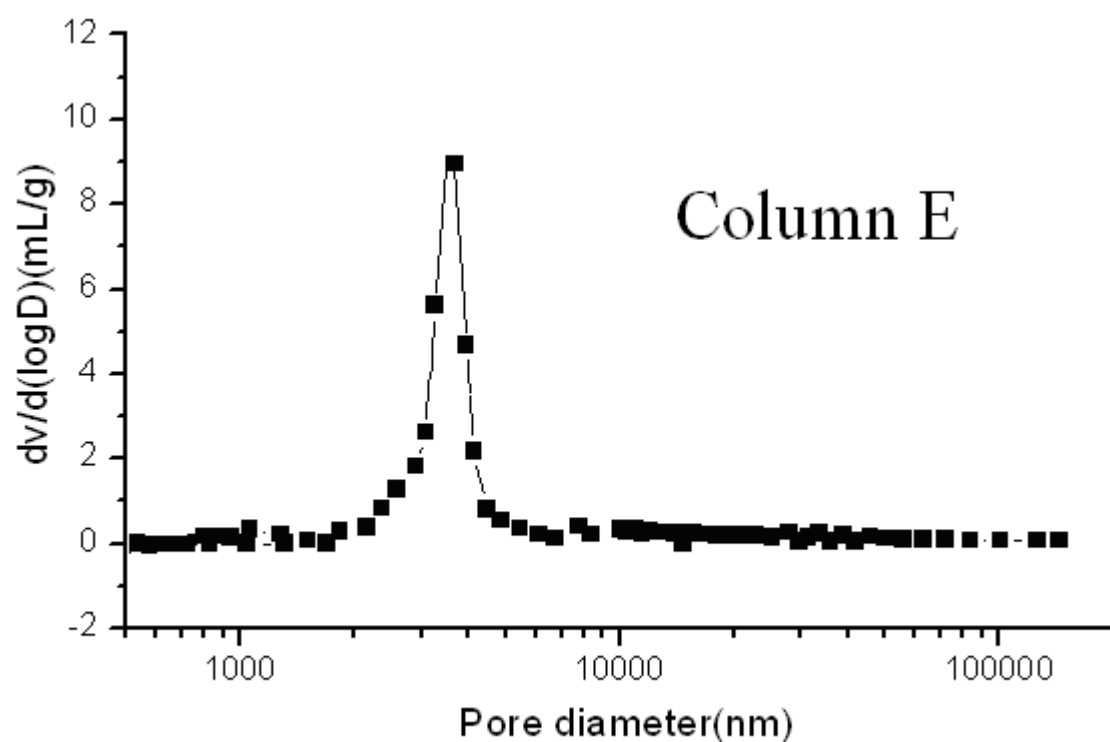


Fig. S2

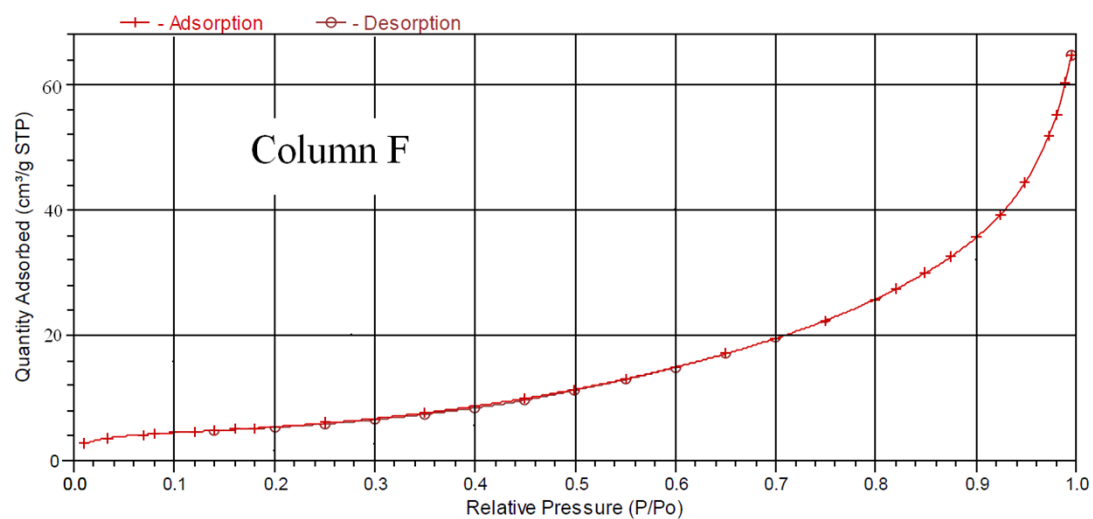
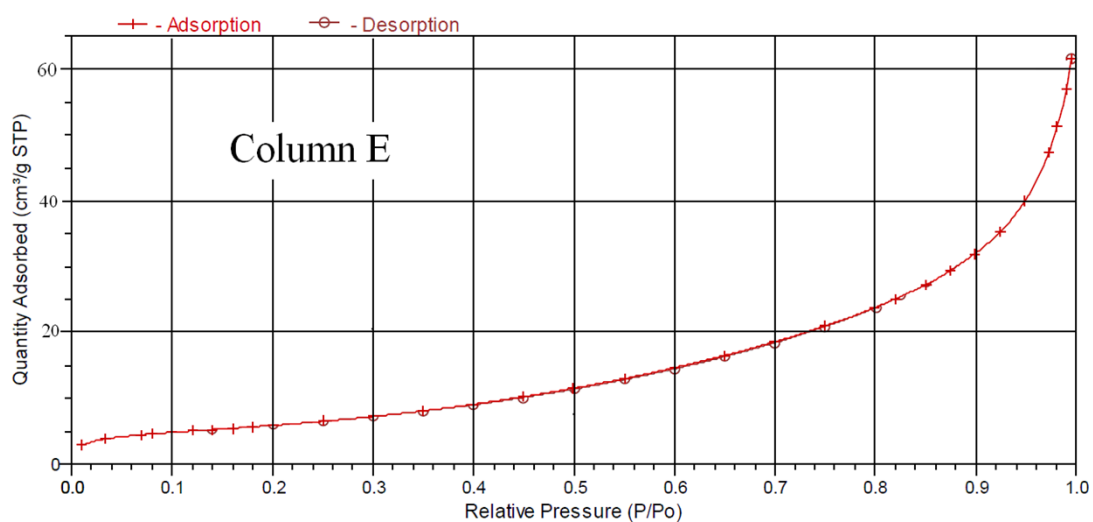
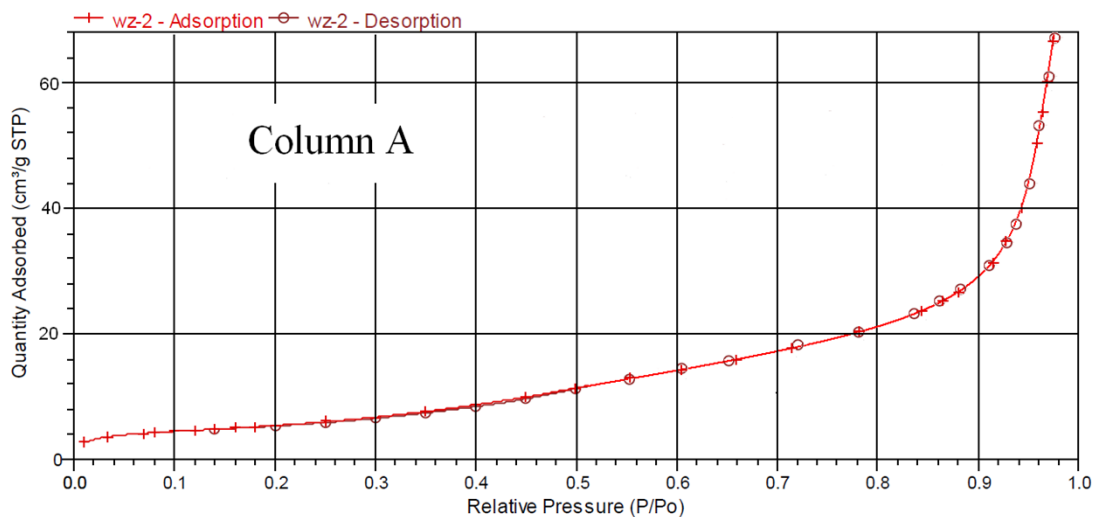


Fig. S3



Fig. S4

Table S1

Day	Plate numbers (plates m ⁻¹)	The average value (plates m ⁻¹)	RSD (%)
1	12,620		
2	12,560		
3	12,540	12,520	5.7 %
4	12,510		
5	12,460		
6	12,420		

^a Chromatographic conditions— Mobile phase: MeOH/water (75/25, v/v), flow rate: 1.0 mL min⁻¹, injection volume: 5.0 µL, detection wavelength: 254 nm, column temperature: 25 °C.

Table S2

Column	Plate numbers (plates m ⁻¹)	The average value (plates m ⁻¹)	RSD (%)
1	12,630		
2	12,520		
3	12,540		
4	12,620	12,580	3.6 %
5	12,560		
6	12,610		

^a Chromatographic conditions— Mobile phase: MeOH/water (75/25, v/v), flow rate: 1.0 mL min⁻¹, injection volume: 5.0 μL, detection wavelength: 254 nm, column temperature: 25 °C.