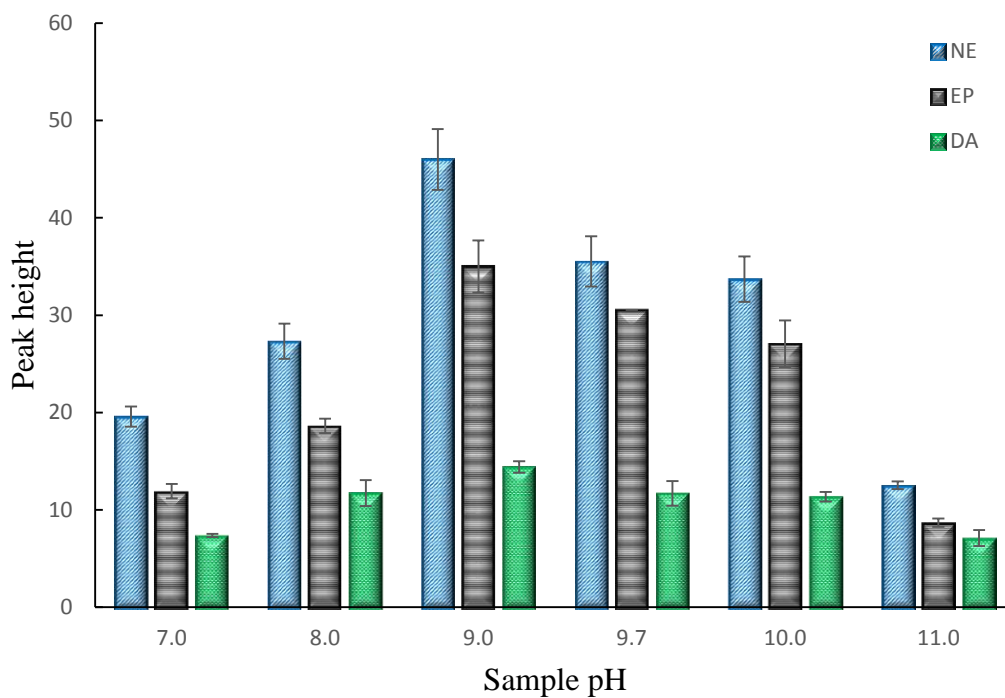
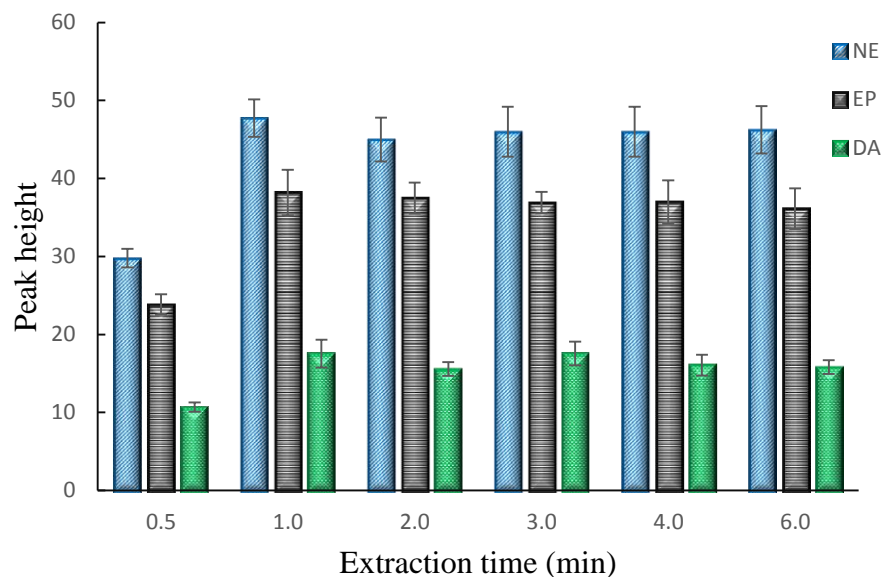


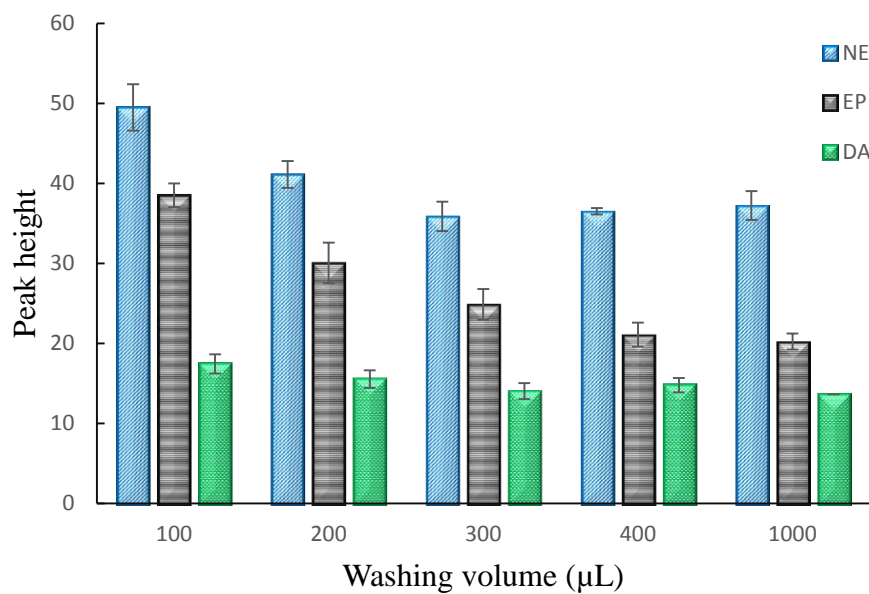
**Fig. S1** Effect of sorbent amount on the extraction efficiency of catecholamines. Initial concentration of catecholamines:  $10 \text{ ng mL}^{-1}$ , sample volume: 5 mL, sample pH: 9.7, extraction time: 5.0 min, washing condition: 100  $\mu\text{L}$  of methanol with 5.0 min ultrasonication, elution condition: 50  $\mu\text{L}$  of 0.2 M acetic acid with 5.0 min ultrasonication. NE: norepinephrine, EP: epinephrine, DA: dopamine.



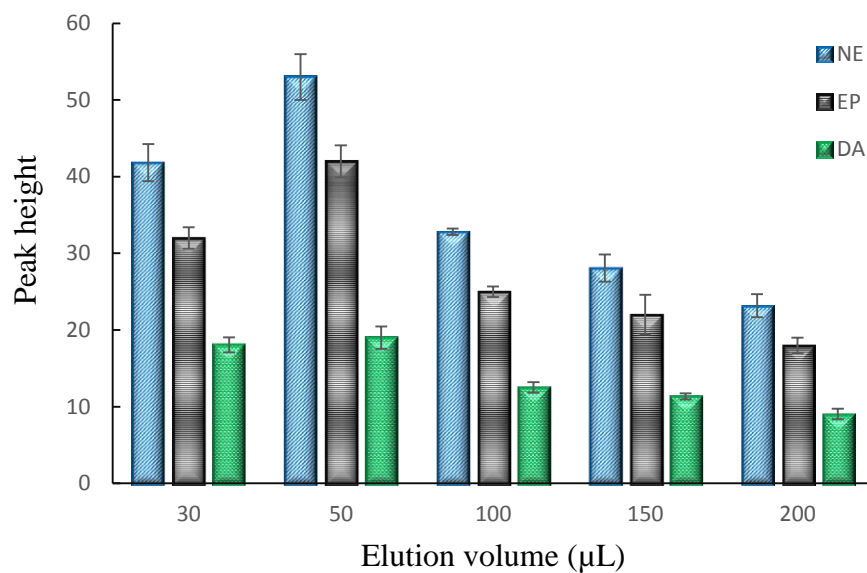
**Fig. S2** Effect of sample pH on the extraction efficiency of catecholamines. Initial concentration of catecholamines:  $10 \text{ ng mL}^{-1}$ , sample volume: 5 mL, amount of sorbent: 5.0 mg, extraction time: 5.0 min, washing condition: 100  $\mu\text{L}$  of methanol with 5.0 min ultrasonication, elution condition: 50  $\mu\text{L}$  of 0.2 M acetic acid with 5.0 min ultrasonication. NE: norepinephrine, EP: epinephrine, DA: dopamine.



**Fig. S3** Effect of extraction time on the extraction efficiency of catecholamines. Initial concentration of catecholamines: 10 ng mL<sup>-1</sup>, sample volume: 5 mL, sample pH: 9.0, amount of sorbent: 5.0 mg, washing condition: 100 µL of methanol with 5.0 min ultrasonication, elution condition: 50 µL of 0.2 M acetic acid with 5.0 min ultrasonication. NE: norepinephrine, EP: epinephrine, DA: dopamine.



**Fig. S4** Effect of washing volume on the extraction efficiency of catecholamines. Initial concentration of catecholamines: 10 ng mL<sup>-1</sup>, sample volume: 5 mL, sample pH: 9.0, amount of sorbent: 5.0 mg, extraction time: 1.0 min, washing solution: methanol-acetonitrile (1:1) with 5.0 min ultrasonication, elution condition: 50 μL of 0.2 M acetic acid with 5.0 min ultrasonication. NE: norepinephrine, EP: epinephrine, DA: dopamine.



**Fig. S5** Effect of elution volume on the extraction efficiency of catecholamines. Initial concentration of catecholamines:  $10 \text{ ng mL}^{-1}$ , sample volume: 5 mL, sample pH: 9.0, amount of sorbent: 5.0 mg, extraction time: 1.0 min, washing condition: 100  $\mu\text{L}$  of methanol-acetonitrile (1:1) with 1.0 min ultrasonication, elution condition: 0.2 M acetic acid with 5.0 min ultrasonication. NE: norepinephrine, EP: epinephrine, DA: dopamine.