

Supplementary Information

Gel Electrophoretic and Liquid Chromatographic Methods for the Identification and Authentication of Cave and House Edible Bird's Nests from Common Adulterants

***Lee Ting Hun¹, Waseem A. Wani¹, Heng Yong Poh¹, Umair Baig², Eddie Tan Ti Tjih³, Noor Idayu Nashiruddin¹, Yong Ee Ling⁴ and Ramlan Abdul Aziz¹**

**¹Institute of Bioproduct Development,
Universiti Teknologi Malaysia, 81310 Johor Bahru, Malaysia**

**²Center of Excellence for Scientific Research Collaboration with MIT, King Fahd University
of Petroleum and Minerals, Dhahran 31261, Saudi Arabia**

**³Food Technology Programme, Faculty of Applied Sciences, Universiti Teknologi MARA,
40450 Shah Alam, Selangor, Malaysia**

**⁴Institute of Environment and Water Resources Management, Department of
Environmental Engineering, Faculty of Civil Engineering, Universiti Teknologi Malaysia,
Johor Bahru, Malaysia**

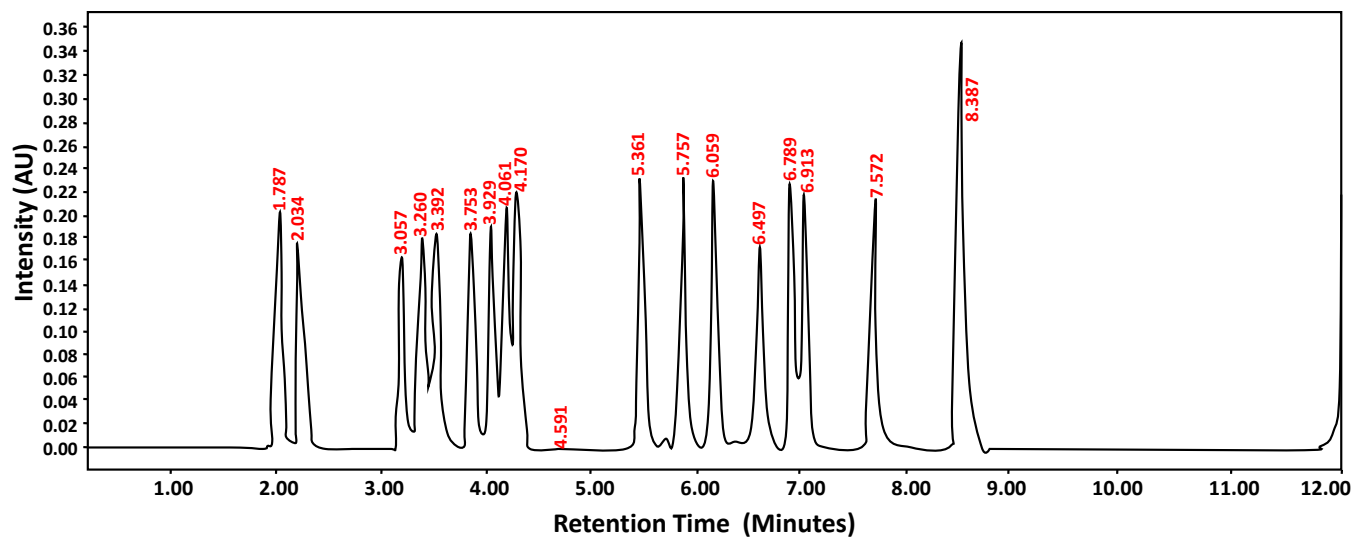


Fig. S1: HPLC chromatogram of amino acid standard.

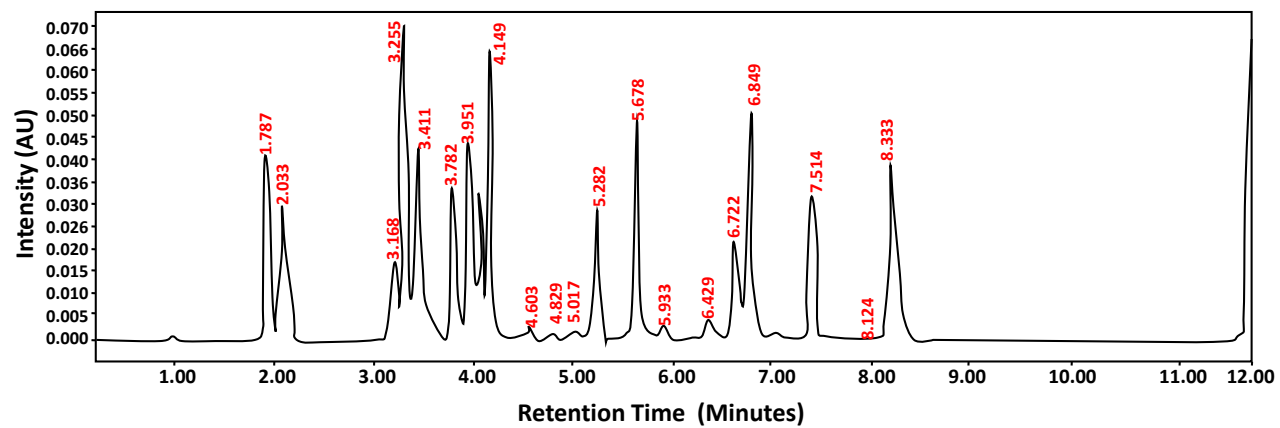


Fig. S2: Amino acid profile of cave nest.

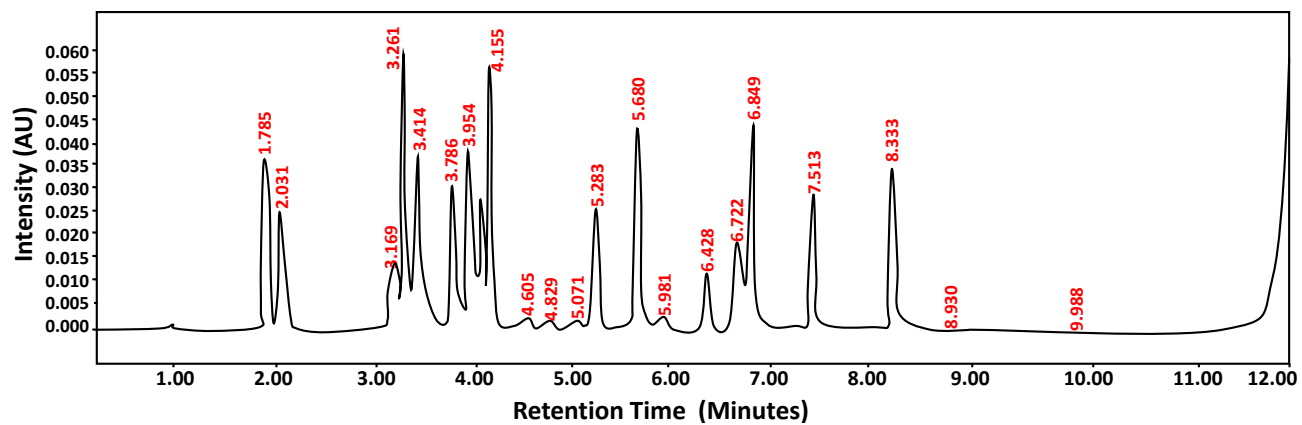


Fig. S3: Amino acid profile of house nest.

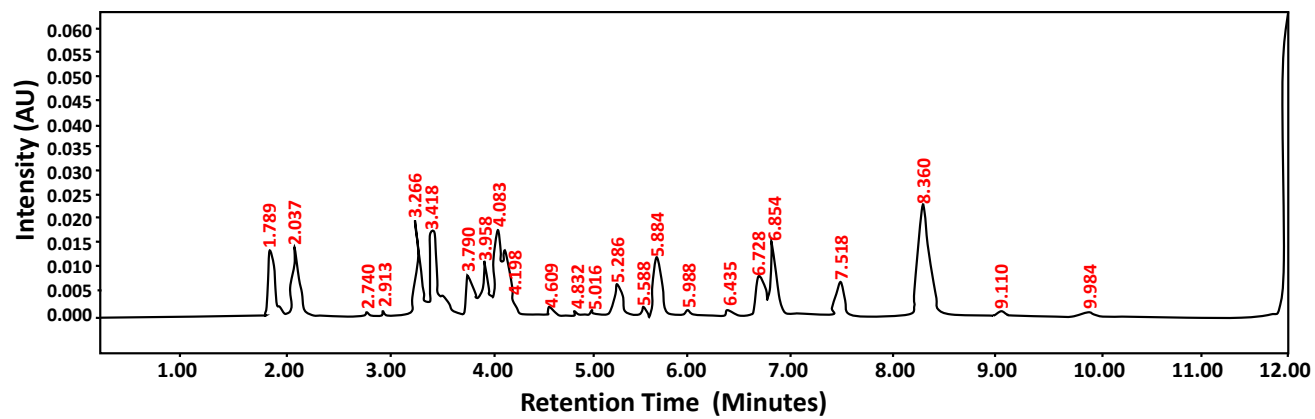


Fig. S4: Amino acid profile of white fungus.

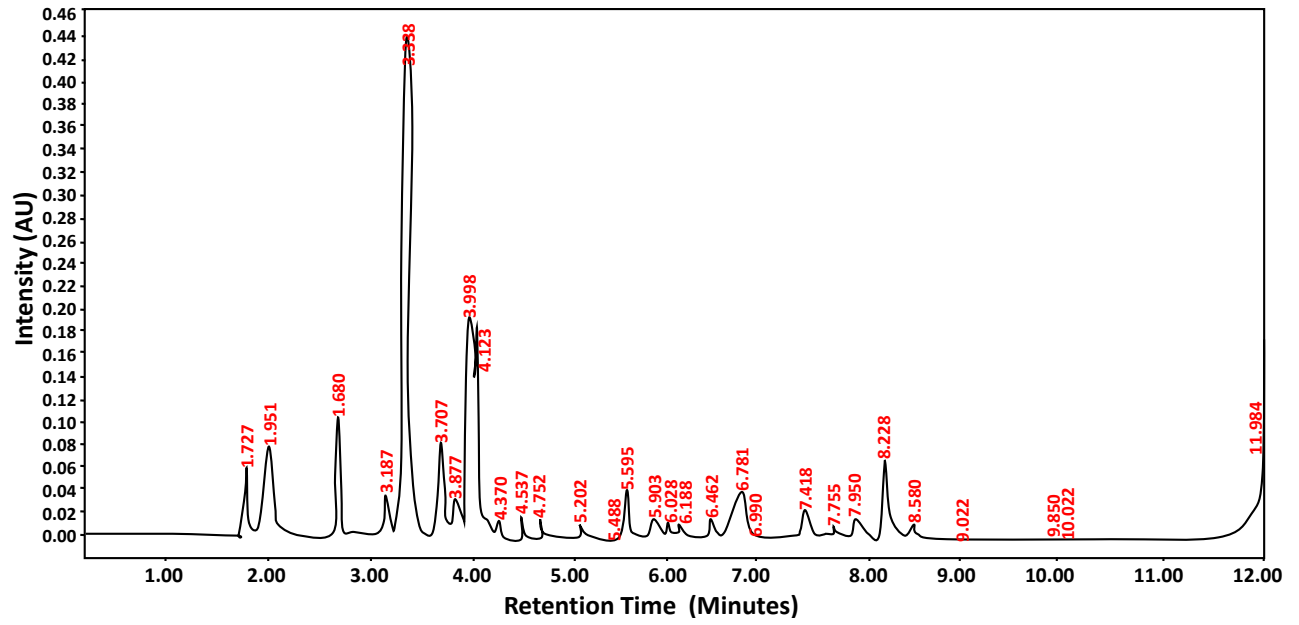


Fig. S5: Amino acid profile of fish swimming bladder.

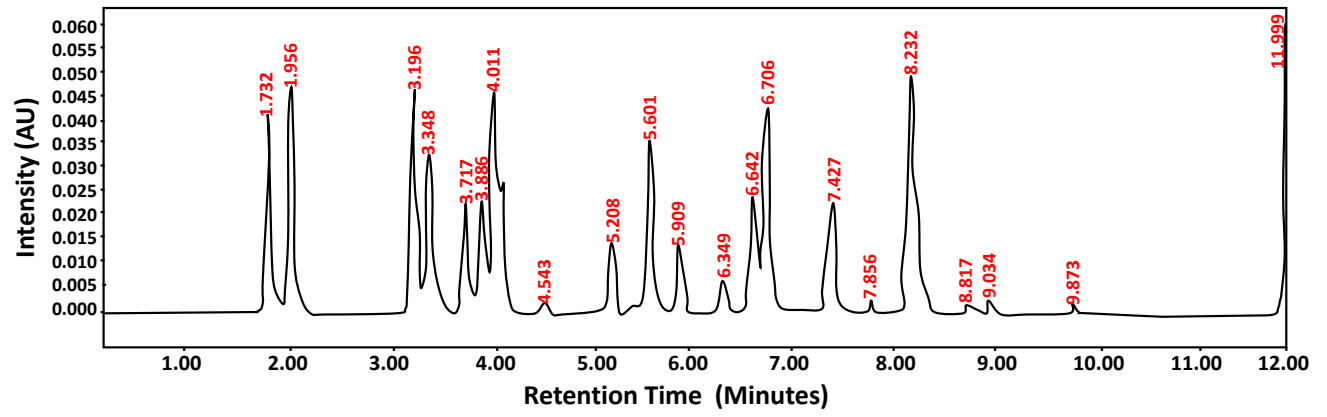


Fig. S6: Amino acid profile of egg white.

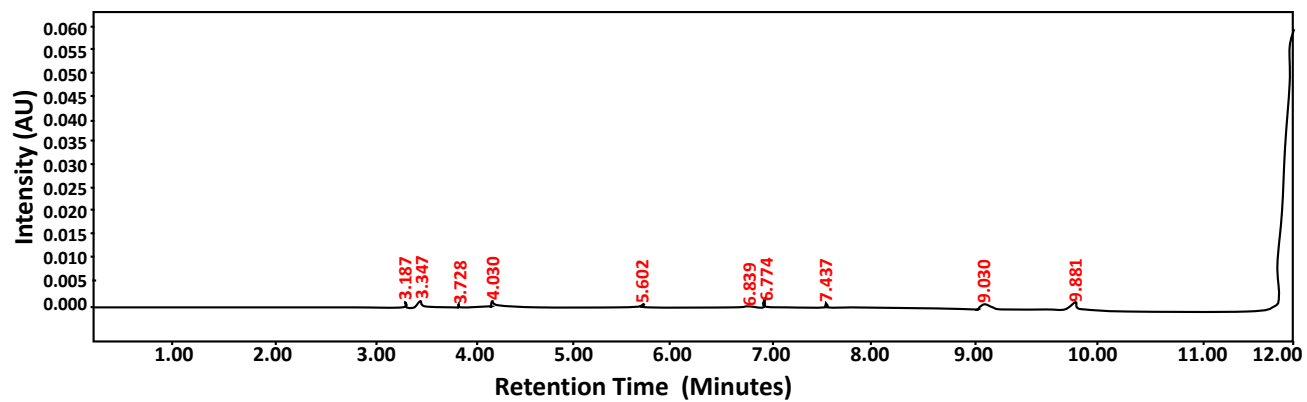


Fig. S7: Amino acid profile of jelly.