

Rapid screening and identification of nontarget flavonoid components from invasive weeds by LC/MS-IT-TOF

Minchao Wang^a, Aocheng Cao^b, Canbin Ouyang^b, Yuan Li^b, Yun Wei^{a,*}

^a State Key Laboratory of Chemical Resource Engineering, Beijing University of Chemical Technology, Beijing 100029, PR China;

^b Institute of Plant Protection, Chinese Academy of Agricultural Sciences, Beijing, 100193, P. R. China

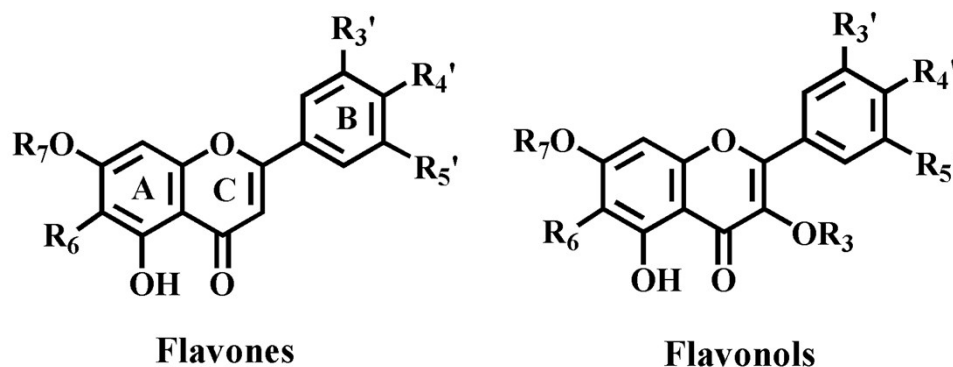


Fig. S1 the structures of flavones and flavonols.

*Corresponding author: Yun Wei, Tel & fax: 0086 10 64442928. E-mail: weiyun@mail.buct.edu.cn

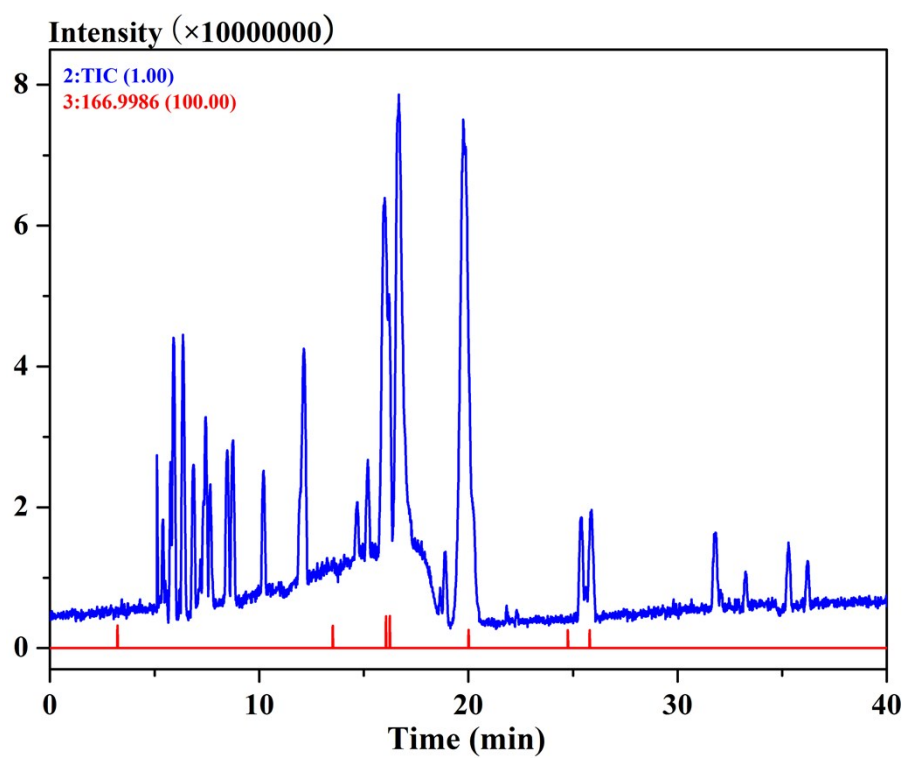


Fig. S2 total ion chromatogram and the extracted ion chromatogram of MS² fragment ion at m/z 166.9986 of the *F. bidentis*.