

Supporting Information

Enhanced tumor-targeted gene delivery by bioreducible polyethylenimine tethering EGFR divalent ligands.

Duhwan Lee^{a,†}, Yeong Mi Lee^{a,†}, Jihoon Kim^a, Myung Kyu Lee^b and Won Jong

Kim^{a,*}

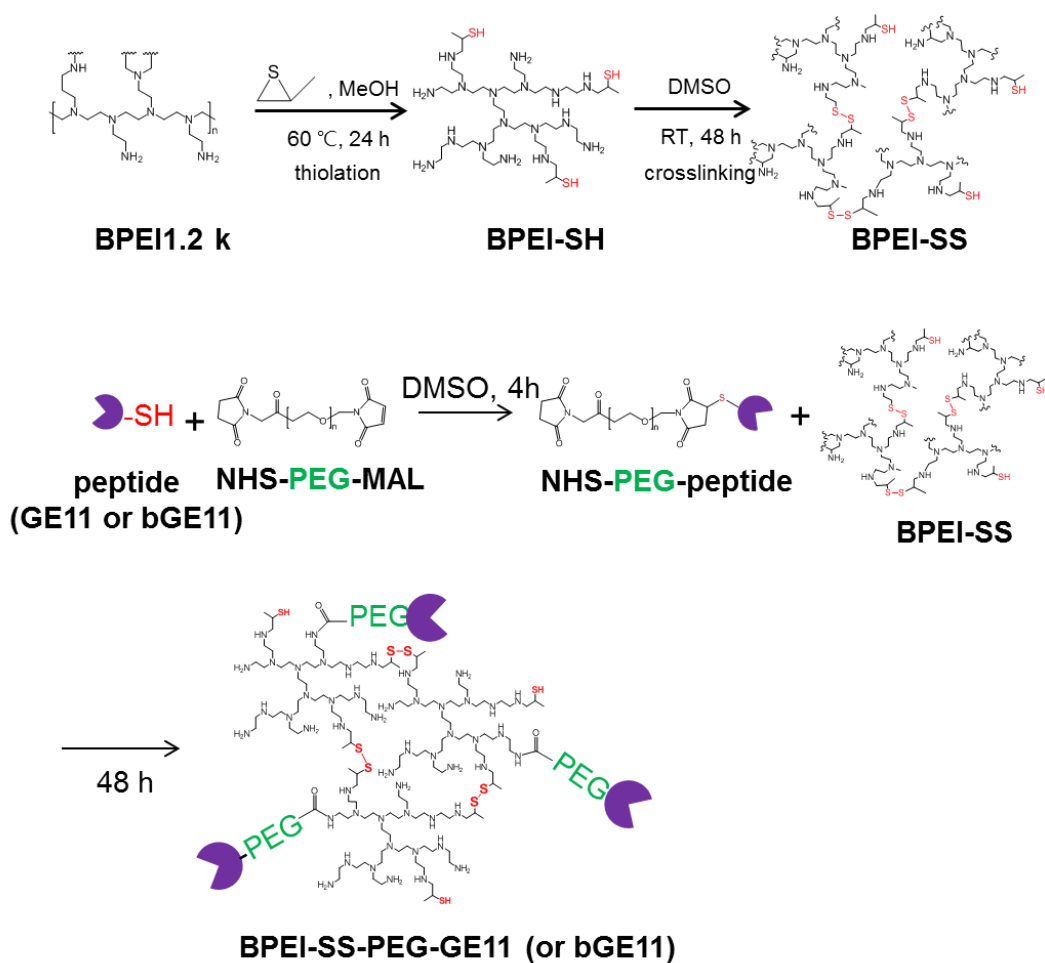


Figure S1. Synthetic scheme of BPEI-SS-PEG-GE11 or BPEI-SS-PEG-bGE11.

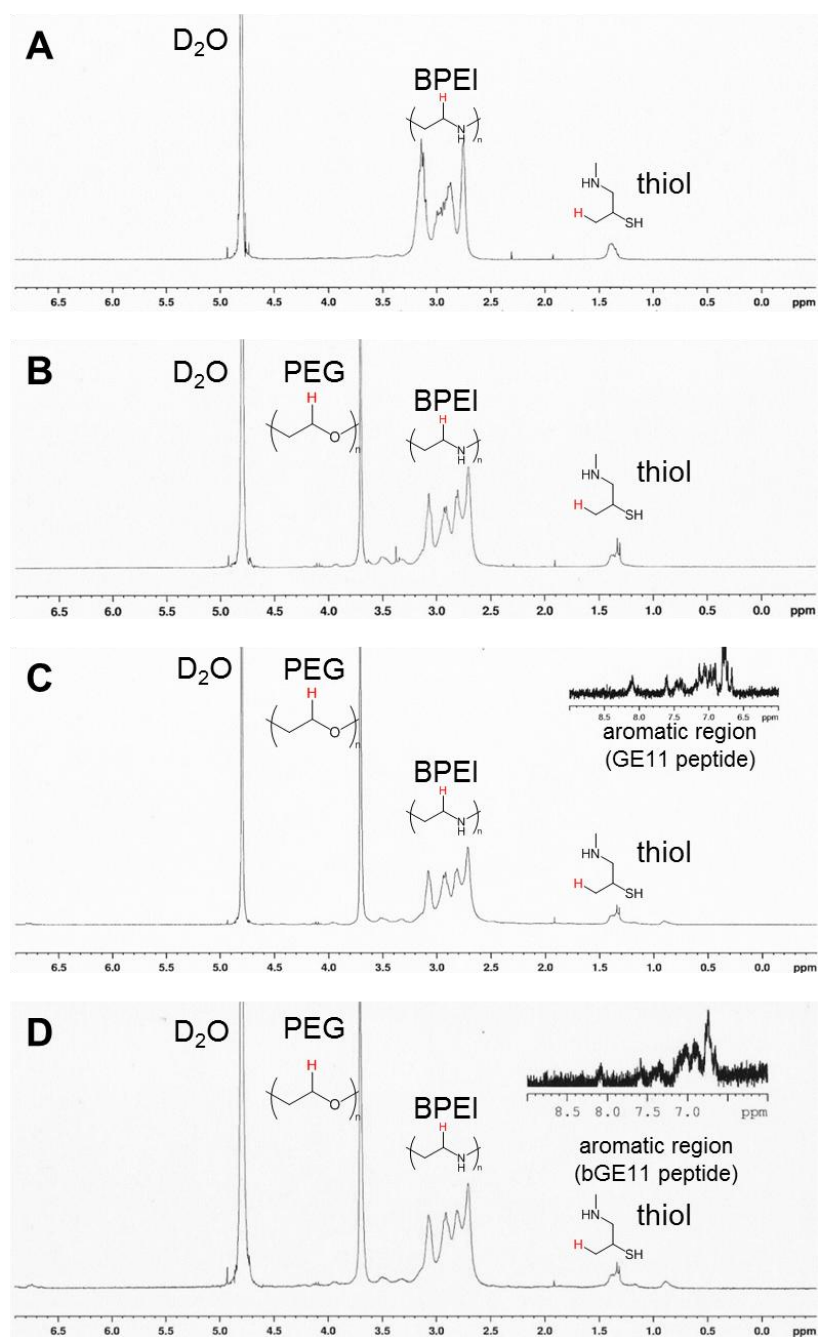


Figure S2. ^1H NMR structure of (A) BPEI-SH, (B) BPEI-SS-PEG, (C) BPEI-SS-PEG-GE1, and (D) BPEI-SS-PEG-bGE11 in D_2O .

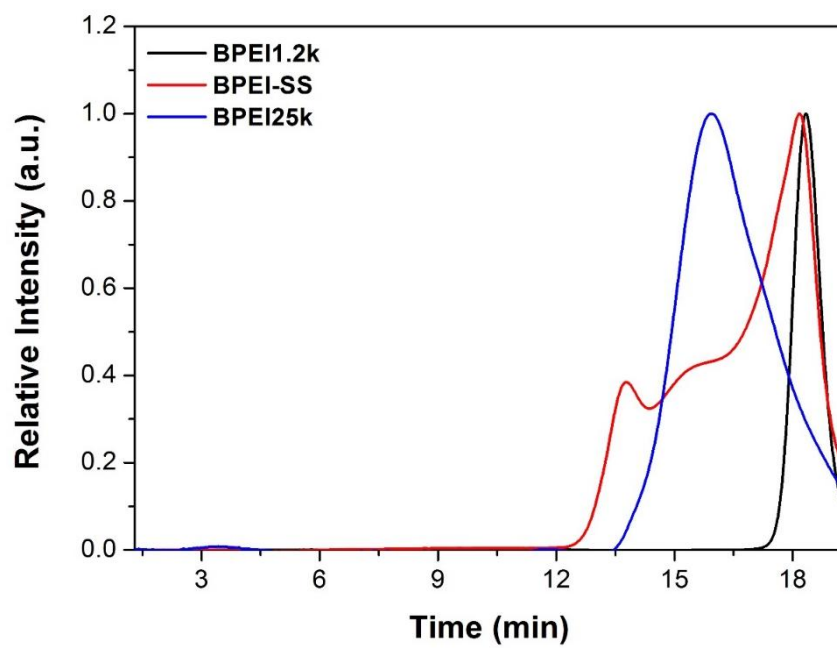


Figure S3. GPC spectra for BPEI-SS. BPEI25k and BPEI1.2k were used as controls.

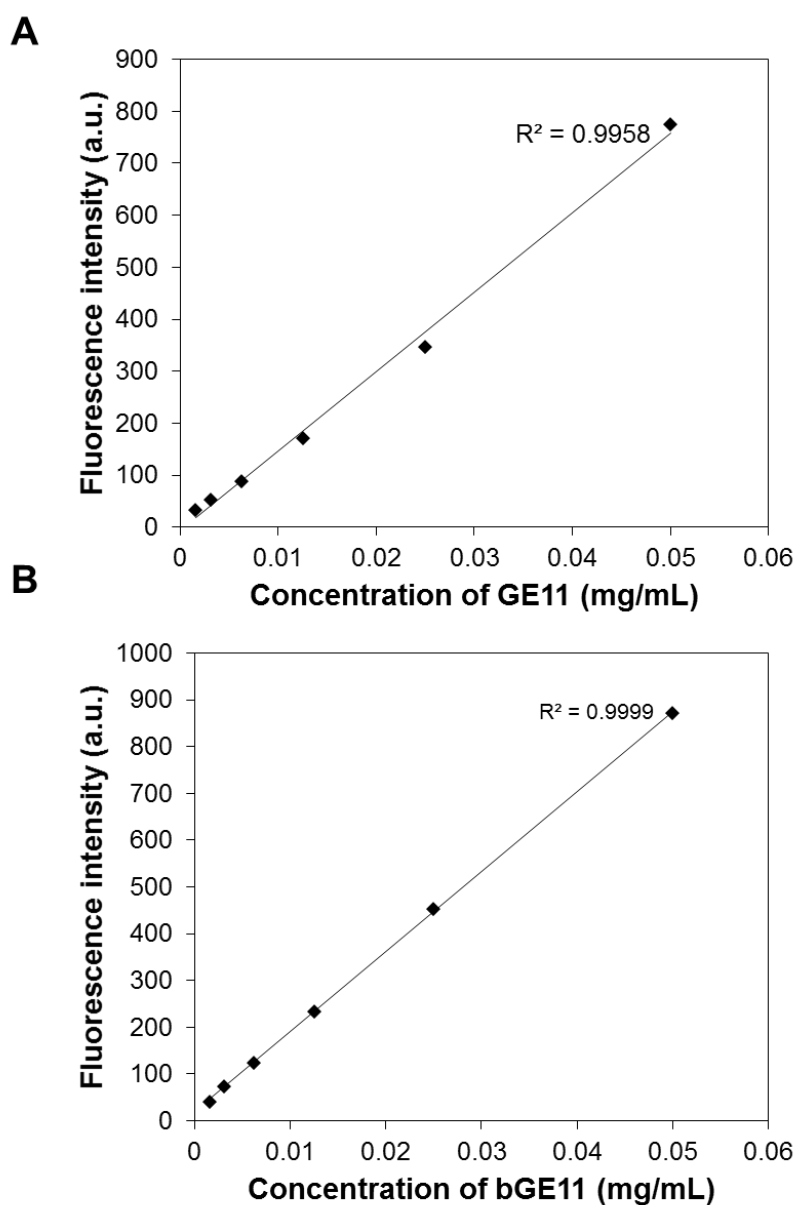


Figure S4. Calibration curve of (A) GE11 and (B) bGE11 peptides. GE11 and bGE11 have many aromatic amino acids in their sequences. Aromatic amino acids can emit intrinsic fluorescence.¹ The fluorescence was measured in DW.

Reference

1. F. W. J. Teale and G. Weber, *Biochem. J.*, 1957, **65**, 476.