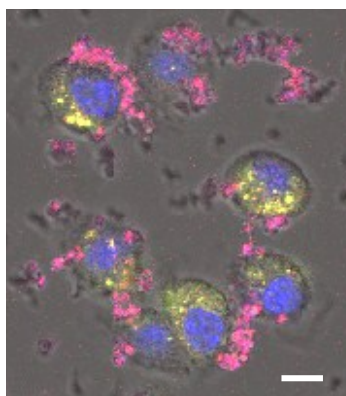


Supplemental Figure 2



Intracellular distribution of plasmid DNA

Cells were transfected with R8-PD-MEND encapsulating fluorescent-labeled plasmid DNA. After 1 hr, the cells were stained with Lyso Tracker® Green DND-26 for endosome/lysosome and Hoechst33342 for nucleus, respectively, and observed with a confocal laser scanning microscope. Red: plasmid DNA, green: endosome/lysosome, blue: nucleus. The scale bars indicate 10 μm .