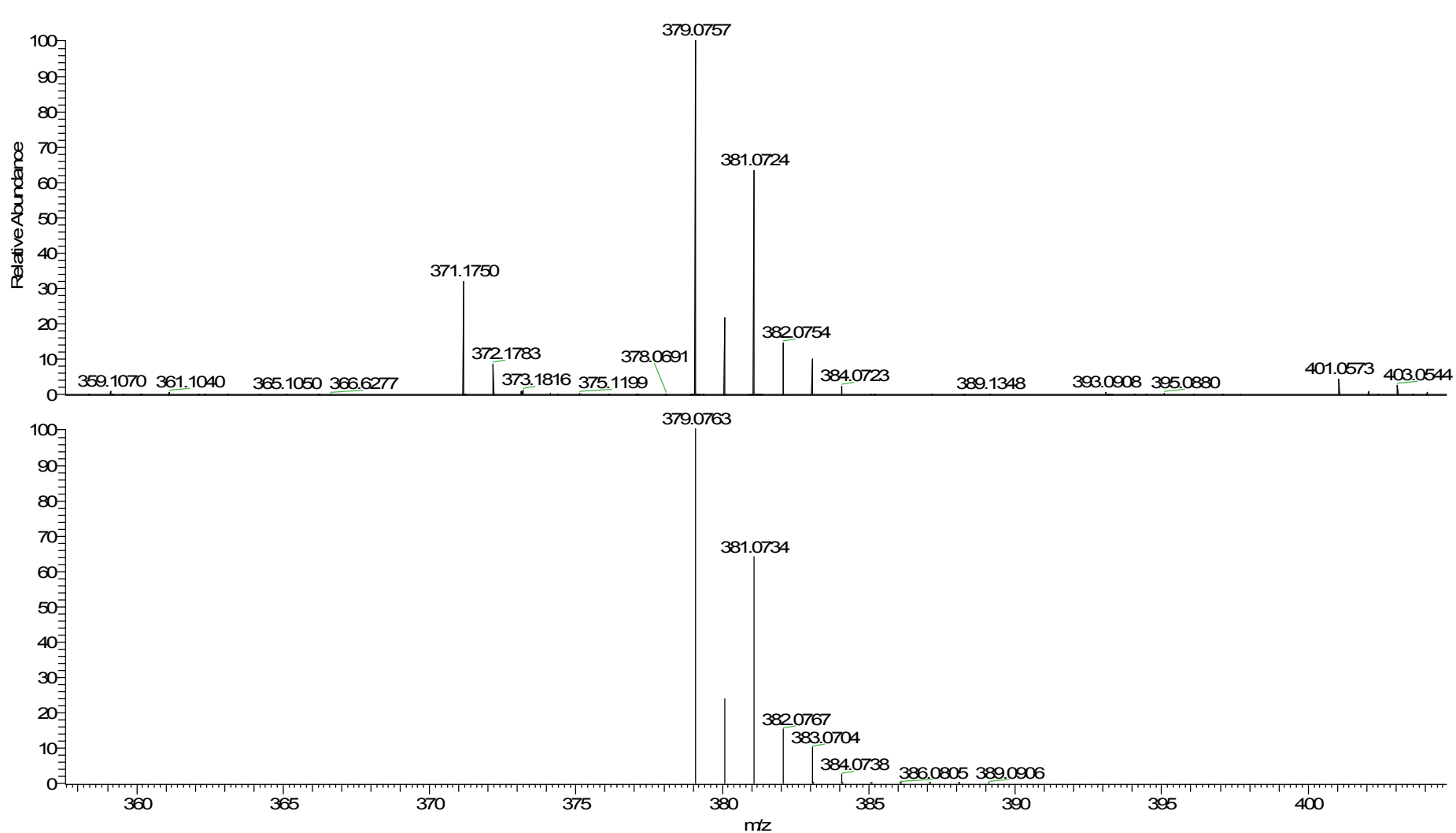


The data of 3ao

F:\Users\...1#_1_150305111736

3/9/2015 9:01:44 AM
Error=1.6 ppm



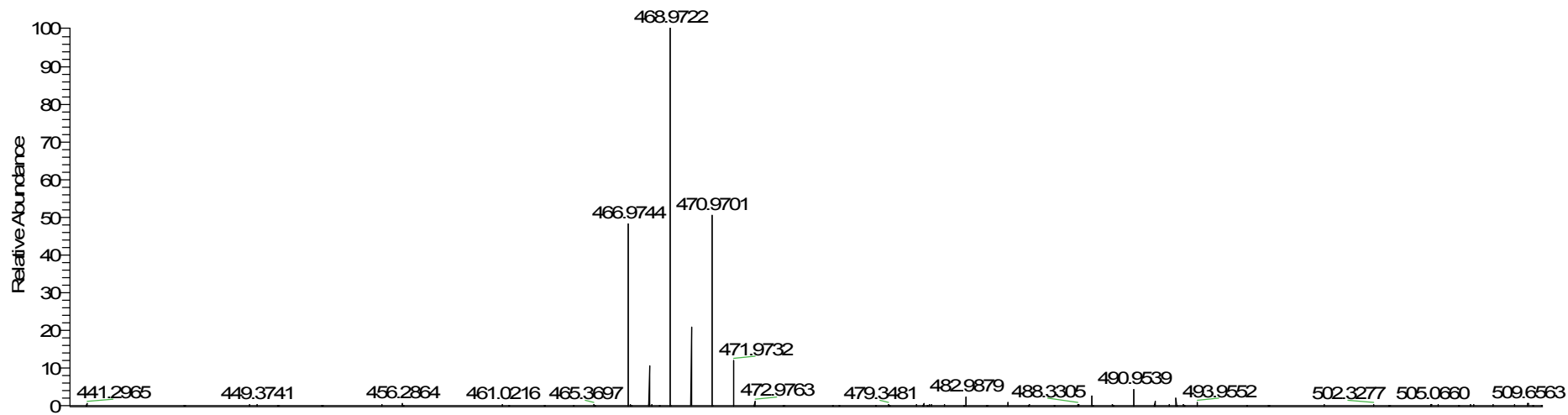
NL:
5.18E7
1#-
1_150305111736#1
RT: 0.00 AV: 1 T:
FTMS+pESI Full
ms [130.00-2000.00]

NL:
4.49E5
C₂₂H₁₆Cl₂N₂+H
C₂₂H₁₇Cl₂N₂
pa Chrg 1

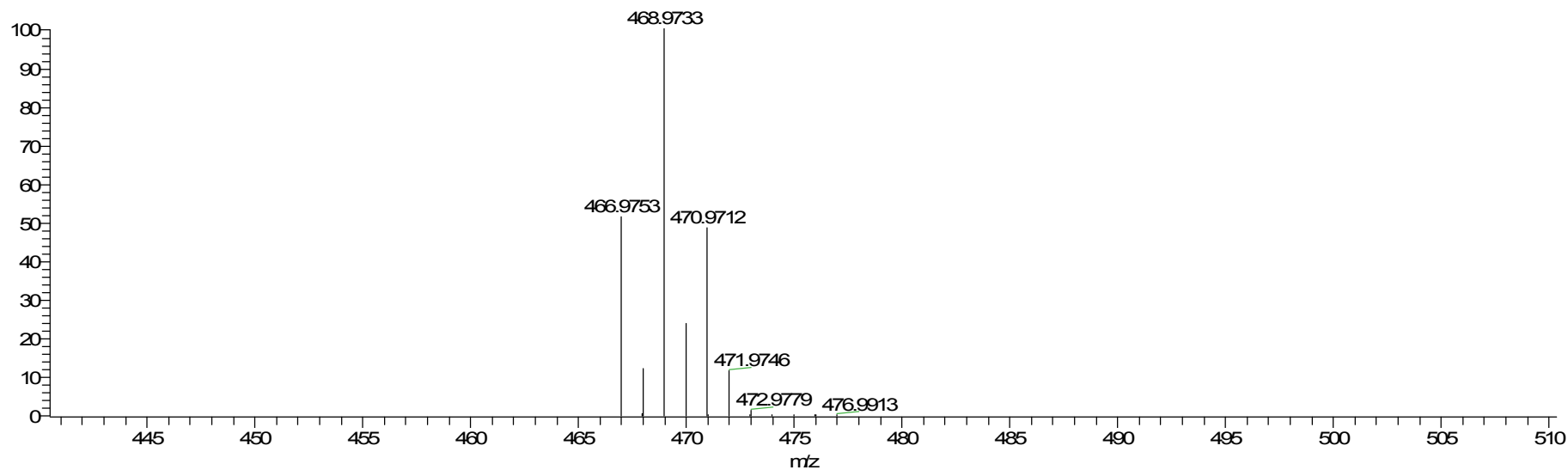
The data of 3ap

F:\Users\...2#_1_150305111736

3/9/2015 9:07:50 AM
Error=1.9 ppm



N:
6.31E5
2#
1_150305111736#1
RT: 0.00 AV: 1 T:
FTMS+pESI Full
ms [130.00-2000.00]



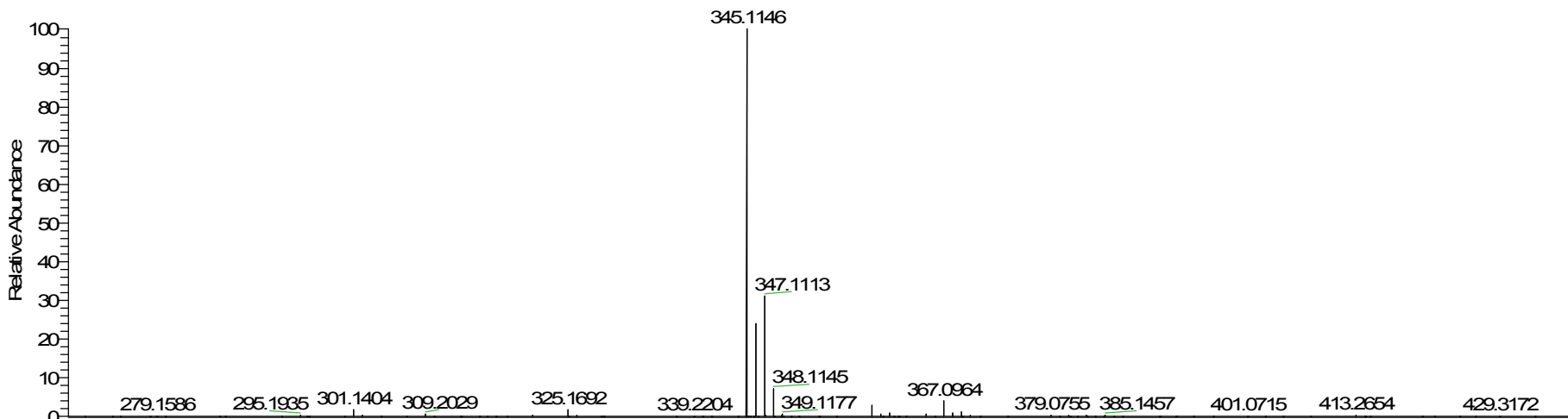
N:
3.91E5
C₂₂H₁₆Br₂N₂+H
C₂₂H₁₇Br₂N₂
pa Chrg 1

The data of 3ka

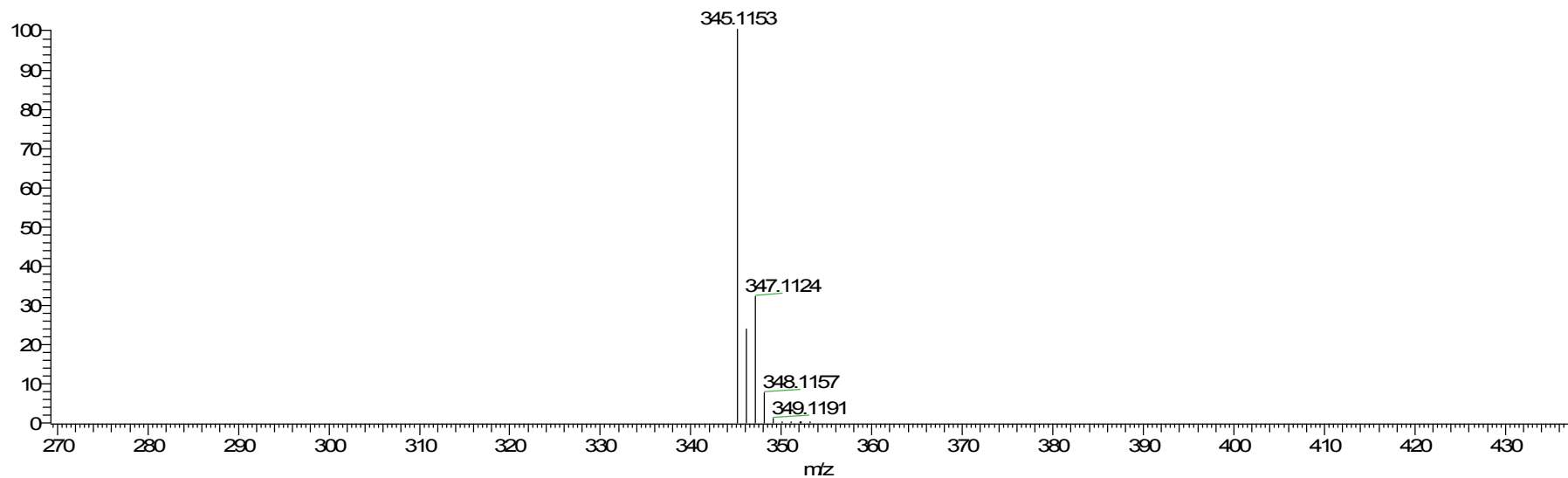
F:\Users\...3#_1_150305111736

3/9/2015 9:39:33 AM

Error=2.0 ppm



NL:
2.07E7
3#
1_150305111736#1
2 RT: 0.08 AV: 1 T:
FTMS+pESI Full
ms [130.00-2000.00]

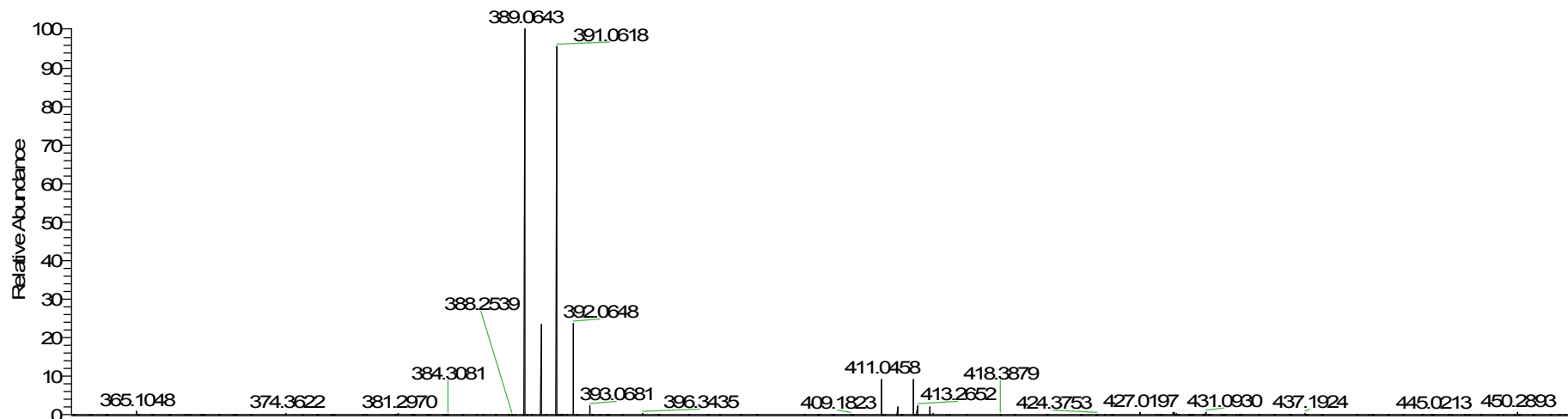


NL:
5.92E5
C₂₂H₁₇Cl₁N₂+H
C₂₂H₁₈Cl₁N₂
pa Chrg 1

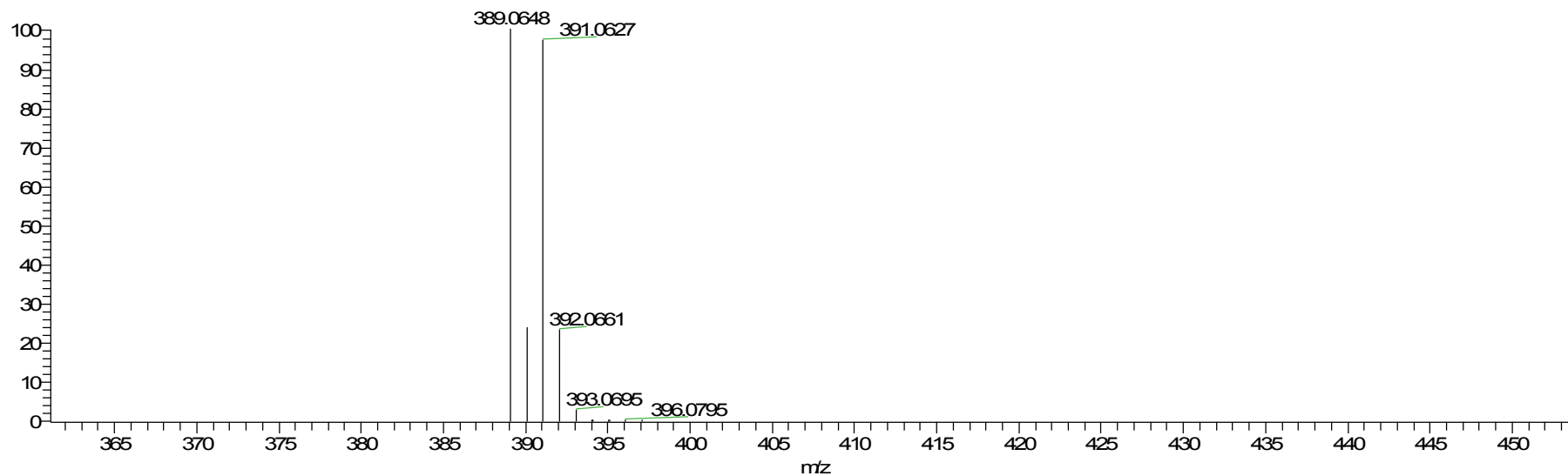
The data of 3la

F:\Users\...4#_1_150309094511

3/9/2015 9:45:12 AM
Error=1.3 ppm



N:
3.54E6
4#
1_150309094511#1
RT: 0.01 AV: 1 T:
FTMS+pESI Full
ms [130.00-2000.00]

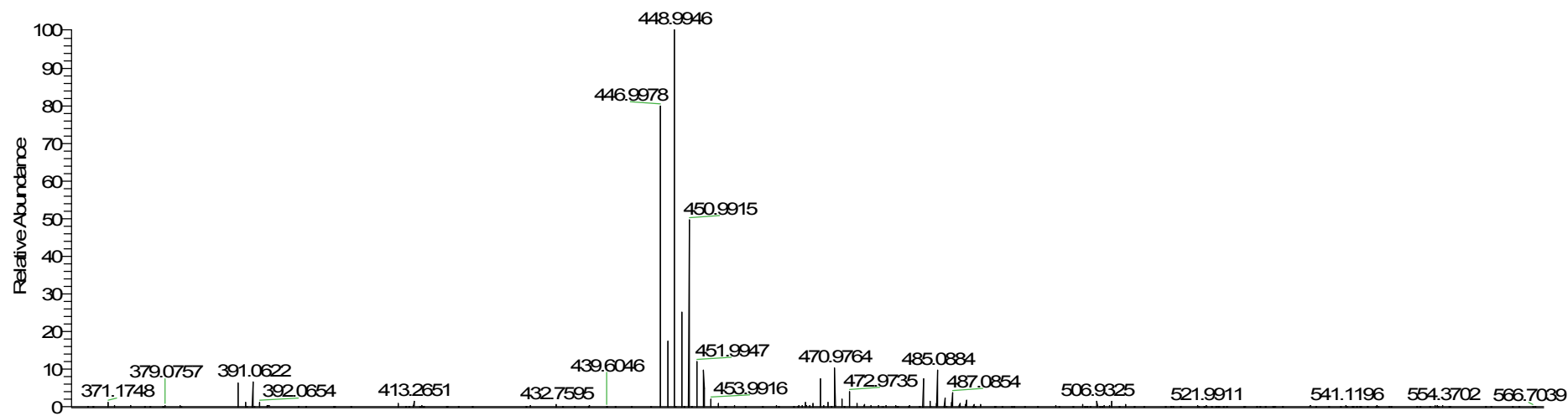


N:
3.96E5
C₂₂H₁₇Br₁N₂+H
C₂₂H₁₈Br₁N₂
pa Chrg 1

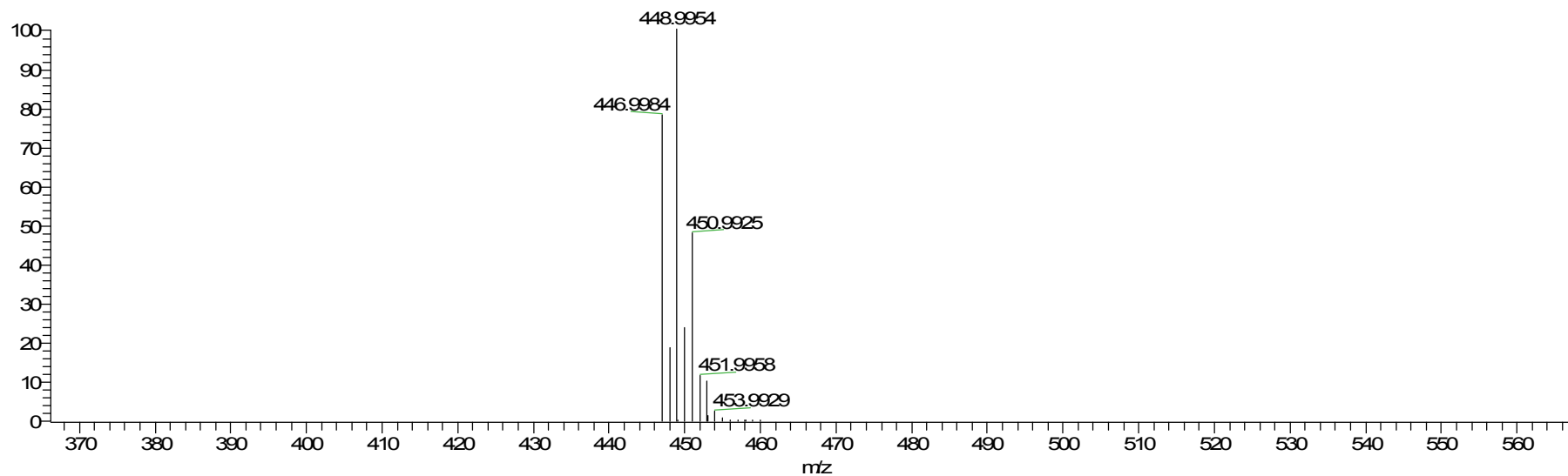
The data of 3ar

F:\Users\...5#_1_150309094511

3/9/2015 9:50:54 AM
Error=1.3 ppm



NL:
1.22E6
5#-
1_150309094511#1
RT: 0.00 AV: 1 T:
FTMS+pESI Full
ms [130.00-2000.00]

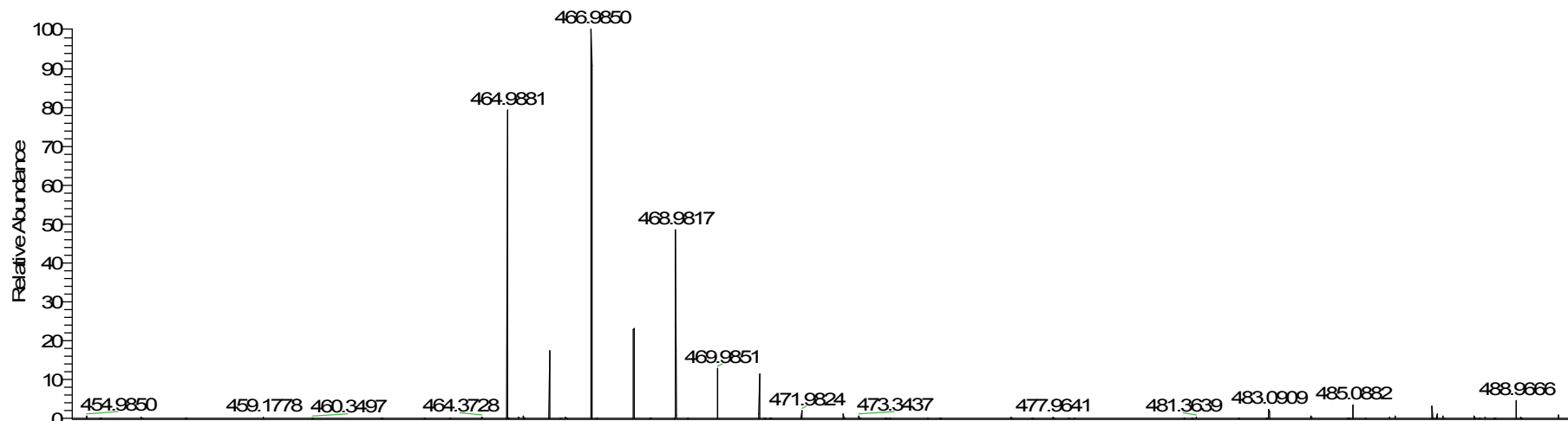


NL:
3.30E5
C₂₂ H₁₄ Cl₄ N₂ +H
C₂₂ H₁₅ Cl₄ N₂
pa Chrg 1

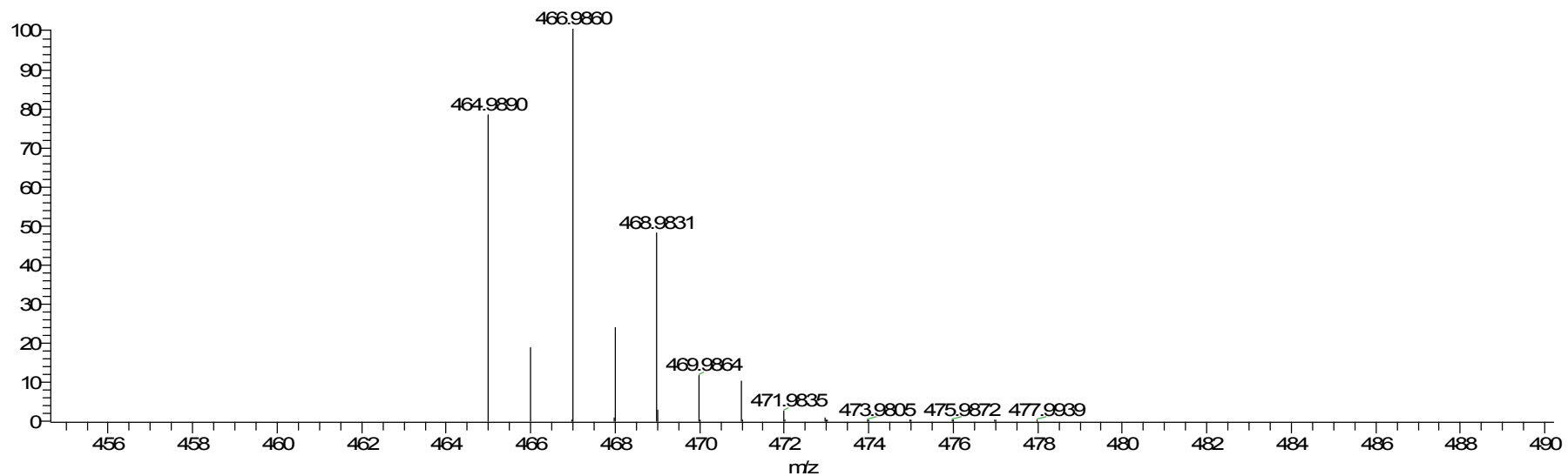
The data of 3fq

F:\Users\...16#_1_150309094511

3/9/2015 9:57:41 AM
Error=1.9 ppm



NL:
1.76E6
6#
1_150309094511#12
RT: 0.09 AV: 1 T:
FTMS+pESI Full ms
[130.00-2000.00]

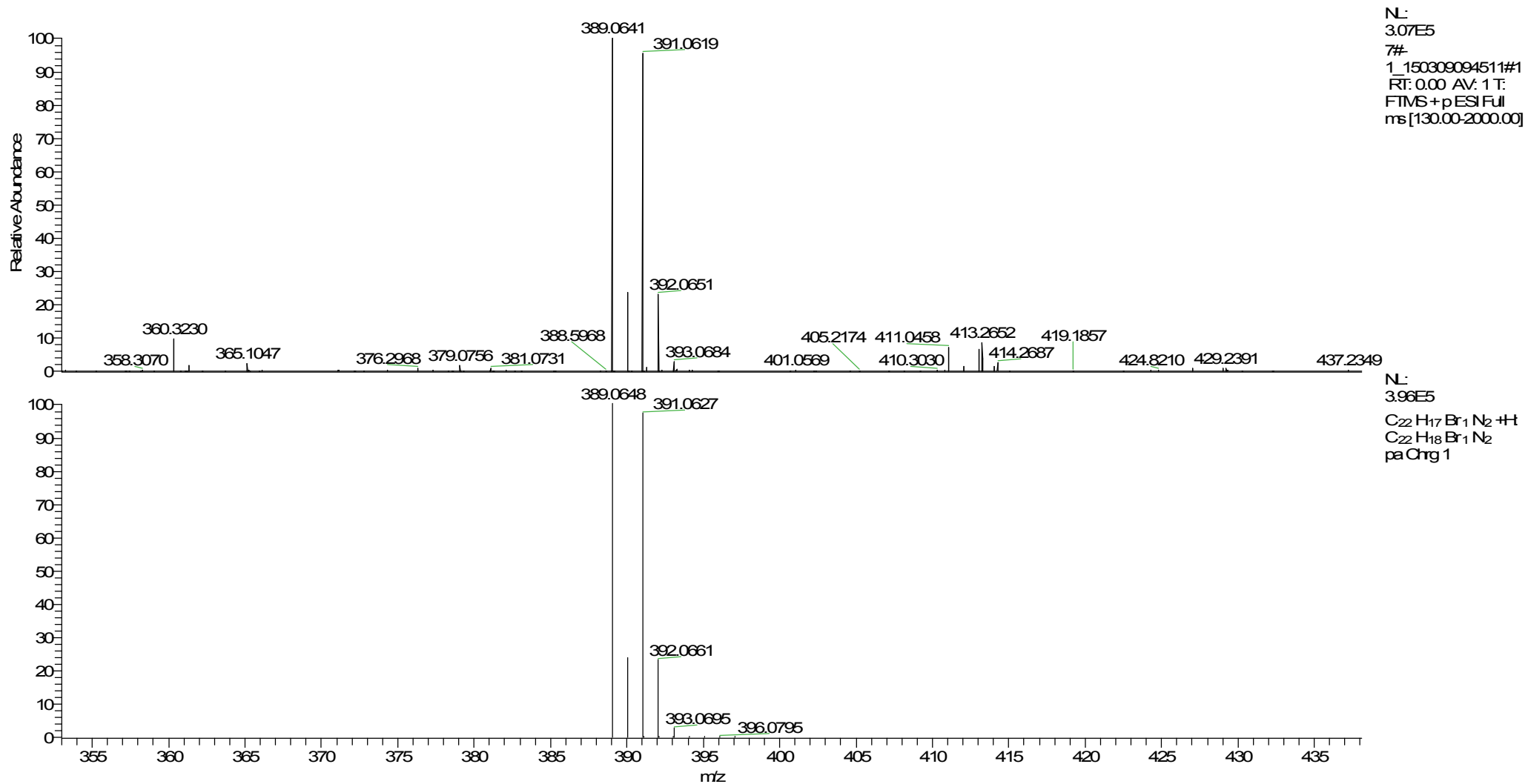


NL:
3.30E5
C₂₂H₁₃Cl₄F₁N₂+H
C₂₂H₁₄Cl₄F₁N₂
pa Chrg 1

The data of 3ha

F:\Users\...17#_1_150309094511

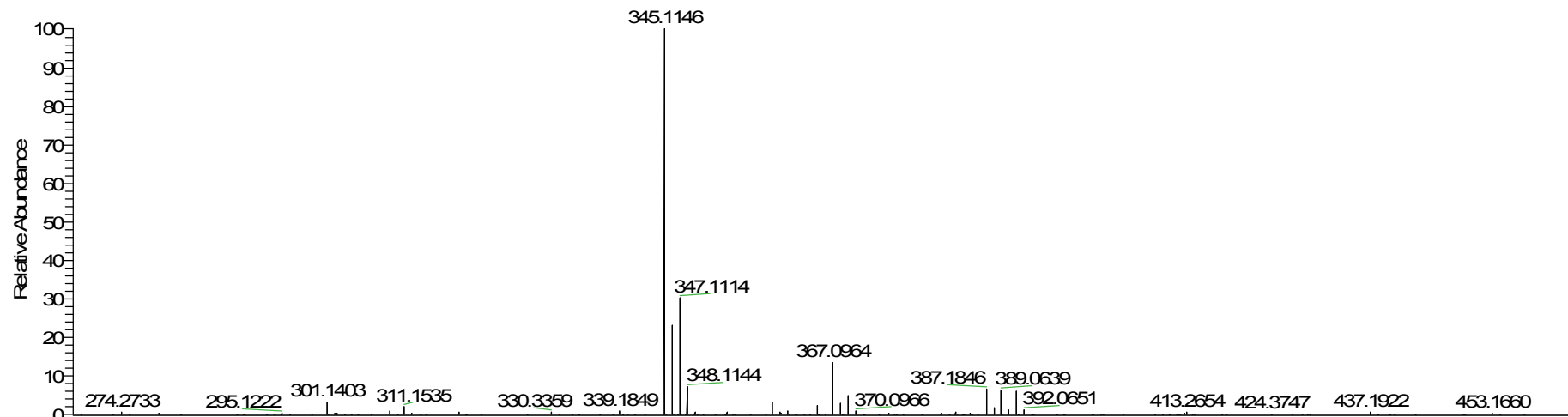
3/9/2015 10:04:12 AM
Error=1.8 ppm



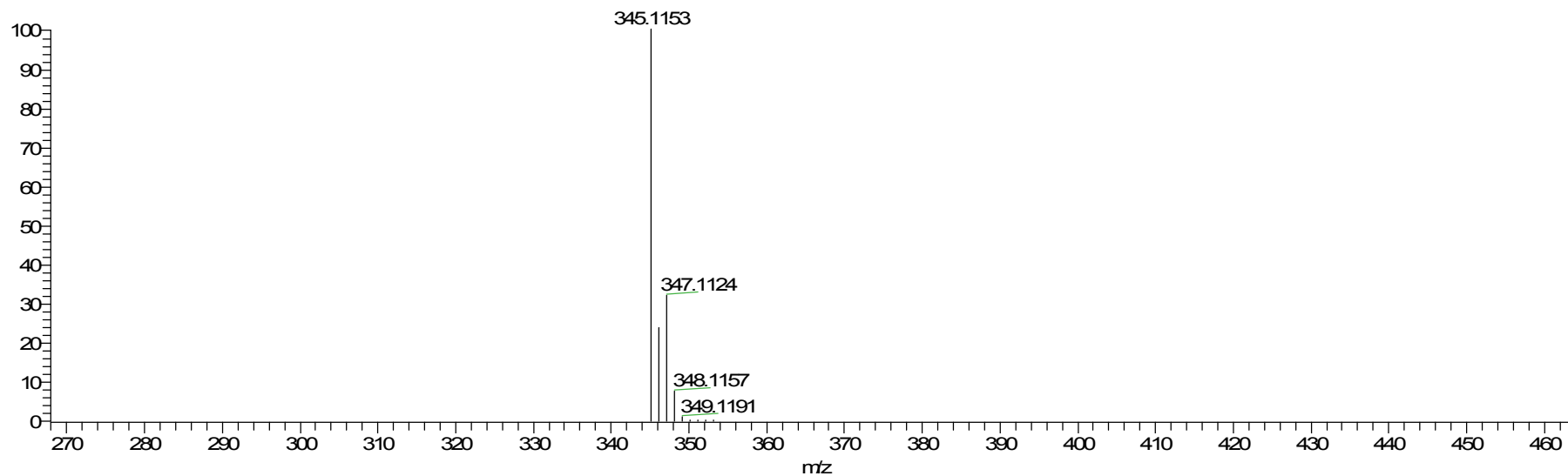
The data of 3ia

F:\Users\...8#_1_150309094511

3/9/2015 10:09:53 AM
Error=2.0 ppm



NL:
2.61E6
8#
1_150309094511#1
RT: 0.00 AV: 1 T:
FTMS+pESI Full
ms [130.00-2000.00]

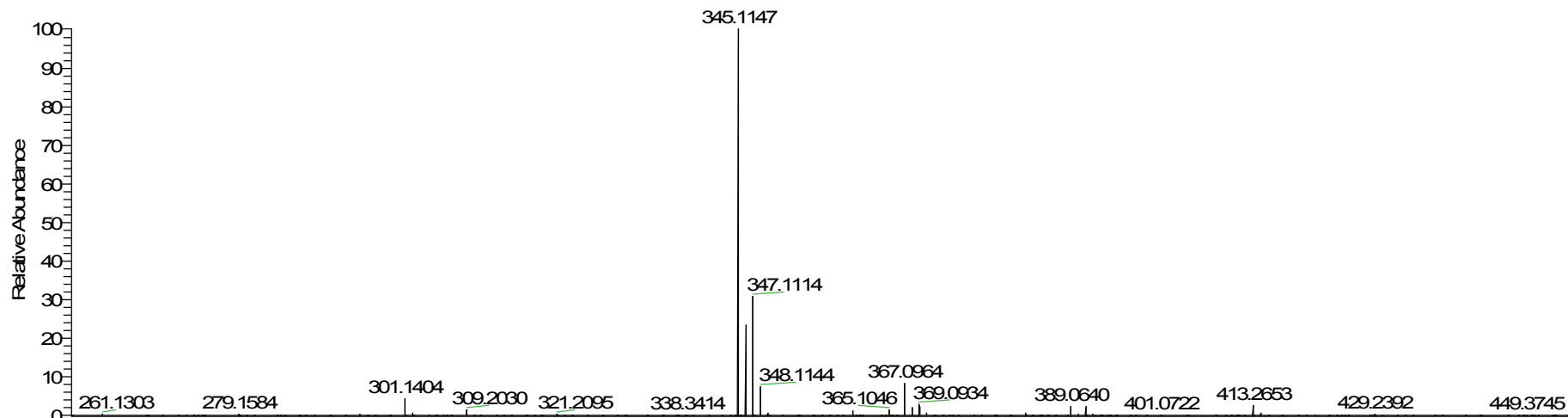


NL:
5.92E5
C₂₂H₁₇Cl₁N₂+H
C₂₂H₁₈Cl₁N₂
pa Chrg 1

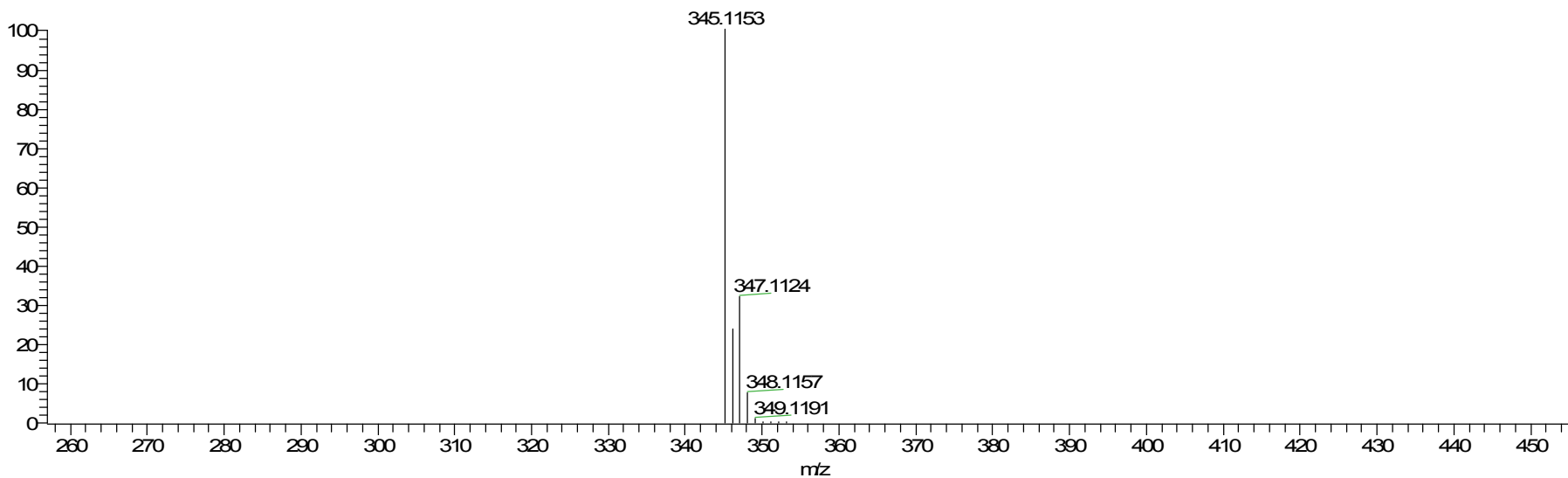
the data of 3ga

F:\Users\...9#_1_150309094511

3/9/2015 10:15:38 AM
Error=1.7 ppm



NL:
2.15E6
9#-
1_150309094511#7
RT: 0.05 AV: 1 T:
FTMS+pESI Full
ms [130.00-2000.00]



NL:
5.92E5
C₂₂H₁₇Cl₁N₂+H
C₂₂H₁₈Cl₁N₂
pa Chrg 1

