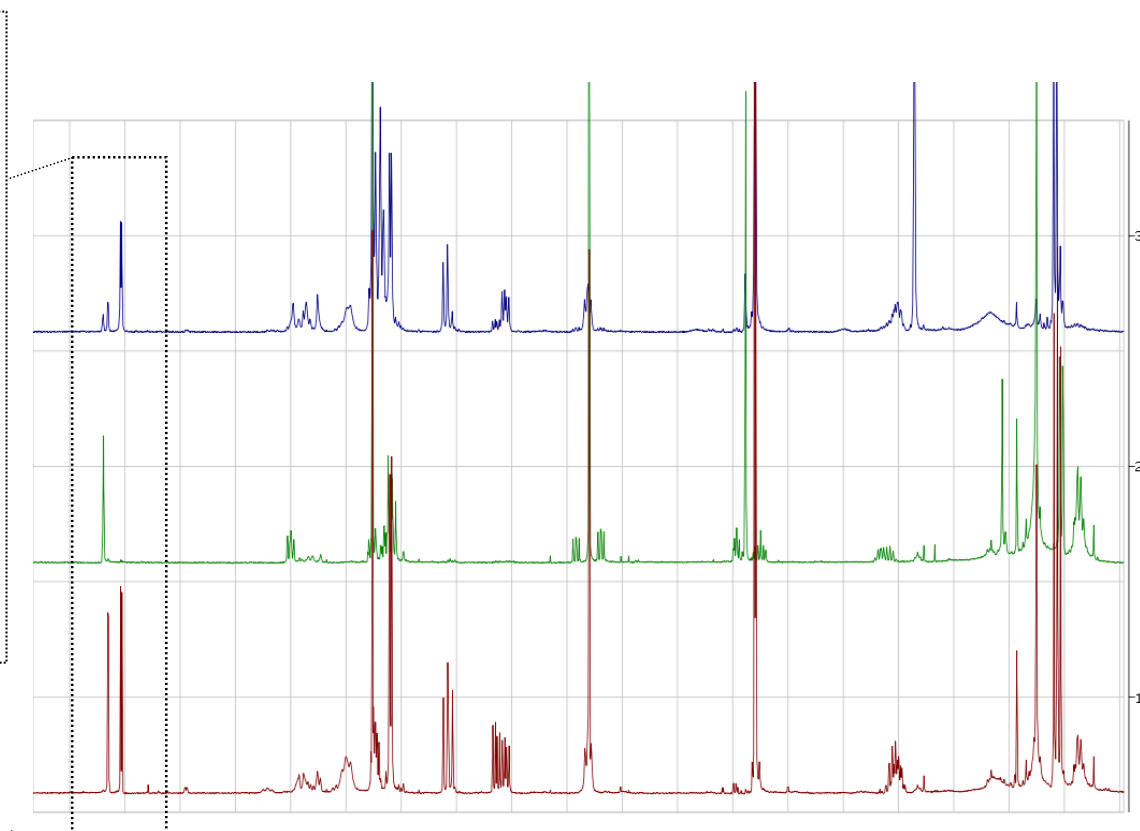
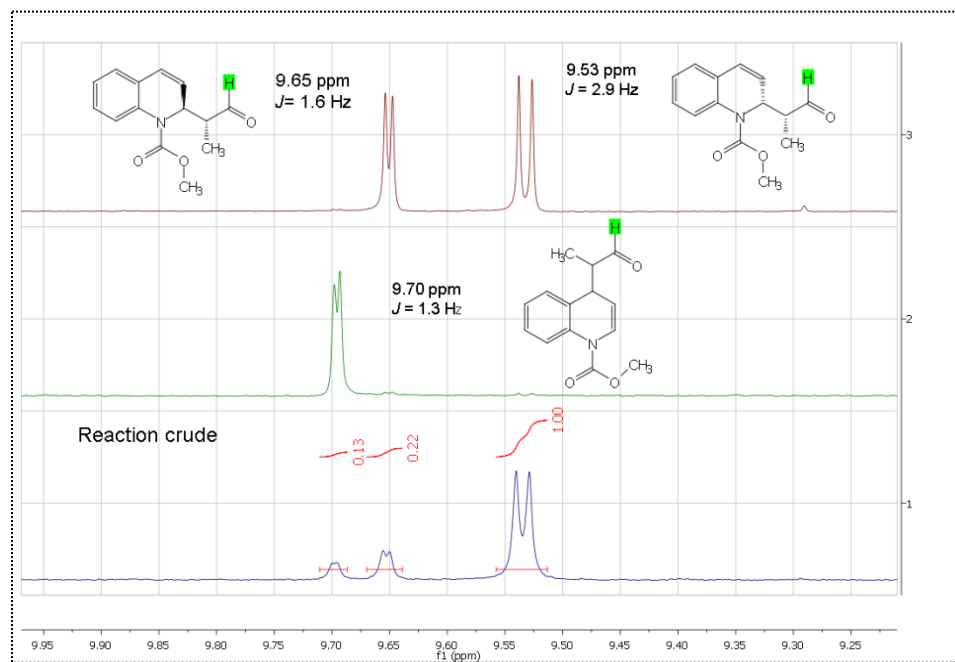
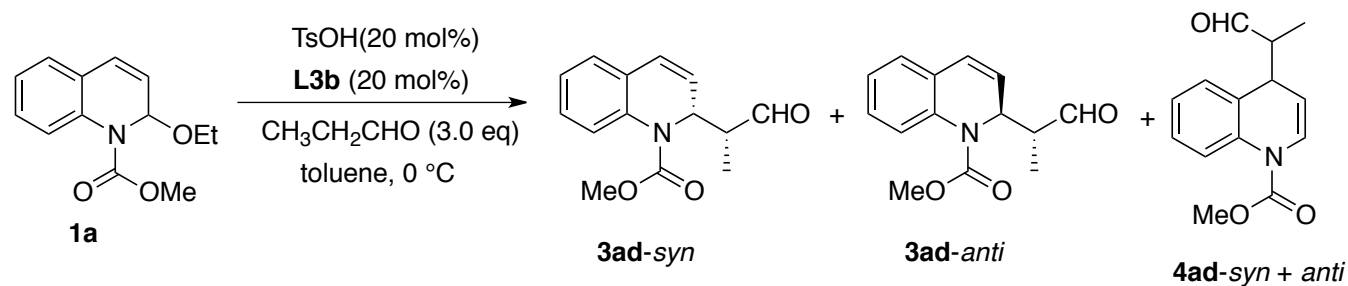


Determination of regio- and diastereoselectivity by ^1H NMR

The regio- and diastereoselectivity was calculated on the aldehydic protons in ^1H NMR of the reaction crude mixture as shown.



When the reaction was carried with in situ reduction to the corresponding alcohols, the regio- and diastereoselectivity was calculated on the double bond protons in the ^1H NMR of the reaction crude.

