

†**Electronic supplementary information (ESI)**
for

Controllable synthesis and morphology evolution from two-dimension to one-dimension of layered $K_2V_6O_{16} \cdot nH_2O$ and their photocatalytic properties

Xingang Kong^{a*}, Zhanglin Guo^a, Puhong Wen^b, Jianfeng Huang^a, Liyun Cao^a, Lixiong Yin^a, Jiayin Li^a,
Qi Feng^c

^a School of Materials Science and Engineering, Shaanxi University of Science and Technology,
Weiyang, Xi'an, Shaanxi 710021, PR China

^b Department of Chemistry and Chemical Engineering, Baoji University of Arts and Science, 1 Gaoxin
Road, Baoji, Shaanxi 721013, PR China

^c Department of Advanced Materials Science, Faculty of Engineering, Kagawa University, 2217-20
Hayashi-cho, Takamatsu-shi, 761-0396 Japan

† Electronic supplementary information (ESI) available.

* Corresponding author: Tel./fax: +86 029 86168802.
E-mail addresses: yezhu_1983@163.com (Xingang Kong).

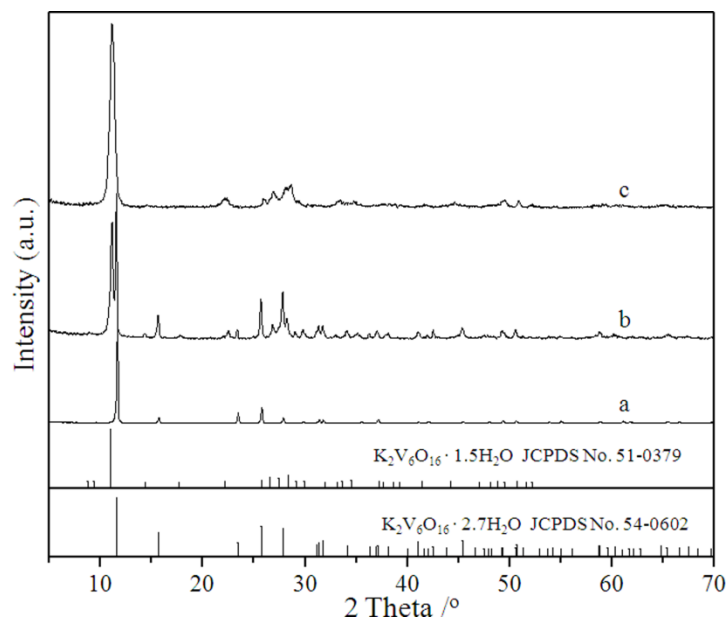


Fig. S1 XRD patterns of samples obtained at the hydrothermal condition of pH=4 at 180 °C for 3 h(a), 6 h(b), 12 h(c).

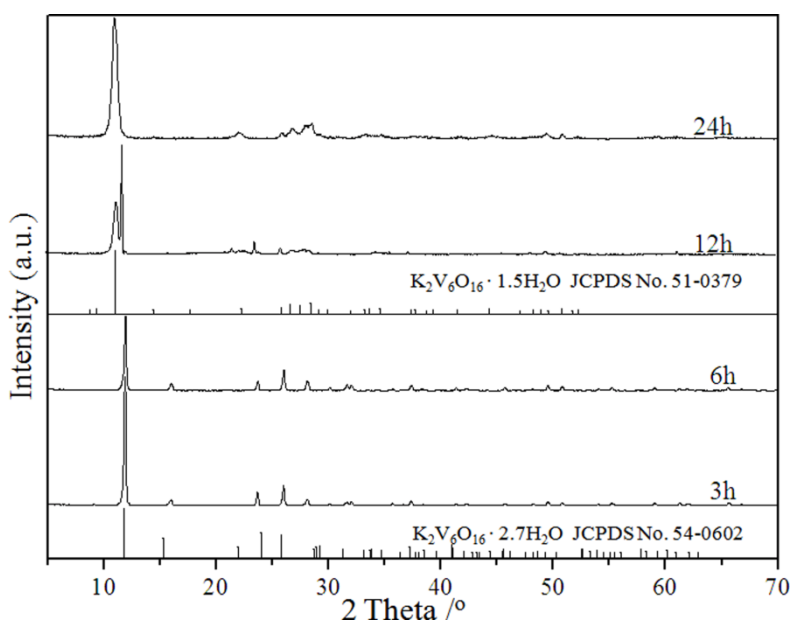


Fig. S2 XRD patterns of samples obtained at the hydrothermal conditions of 150 °C and pH=6 for different time.

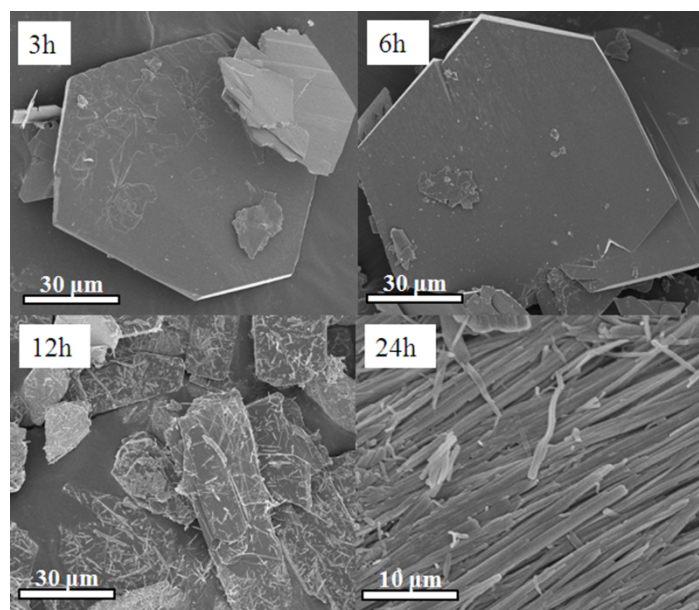


Fig. S3 FE-SEM images of samples obtained at the hydrothermal condition of 150 °C and pH=6 for different time.

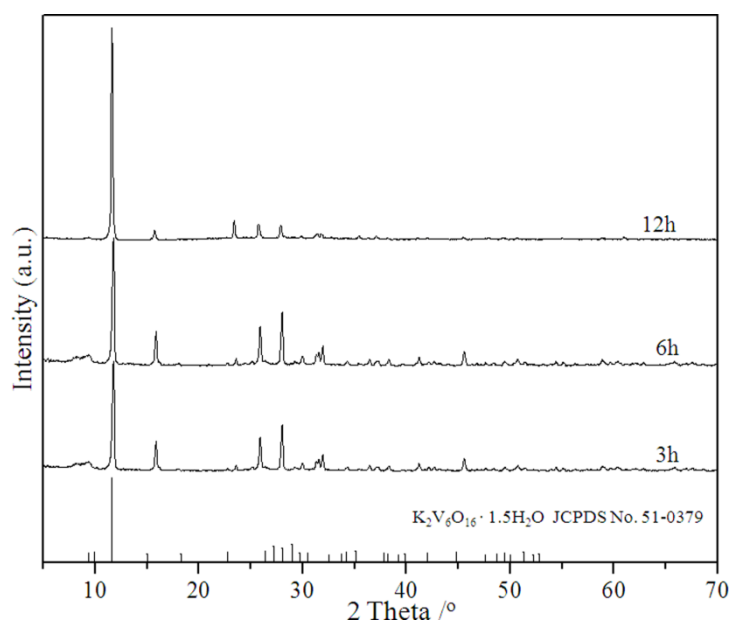


Fig. S4 XRD patterns of samples obtained at the hydrothermal conditions of 200 °C and pH=3 for different time.

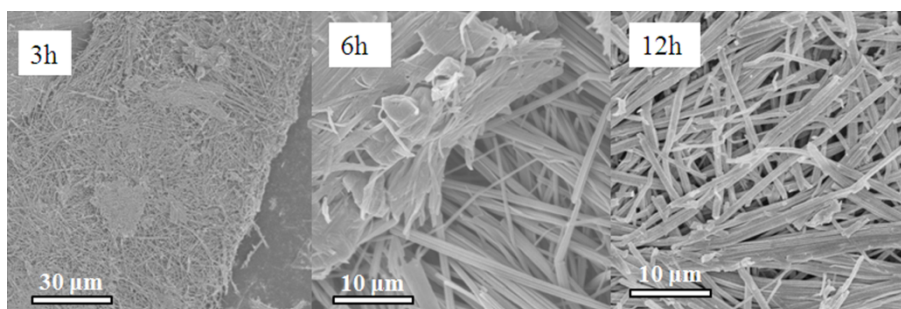


Fig. S5 FE-SEM images of samples obtained at the hydrothermal conditions of 200 °C and pH=3 for different time.