

Supporting Information

Selective CO₂ Uptake and Vapour Adsorption with Single-Crystal-to-Single-Crystal Transformations within Sn(IV) Porphyrin Crystals

S. Wang, G. P. Knowles, A. L. Chaffee, and S. J. Langford*

School of Chemistry, Monash University, Victoria, Australia 3800

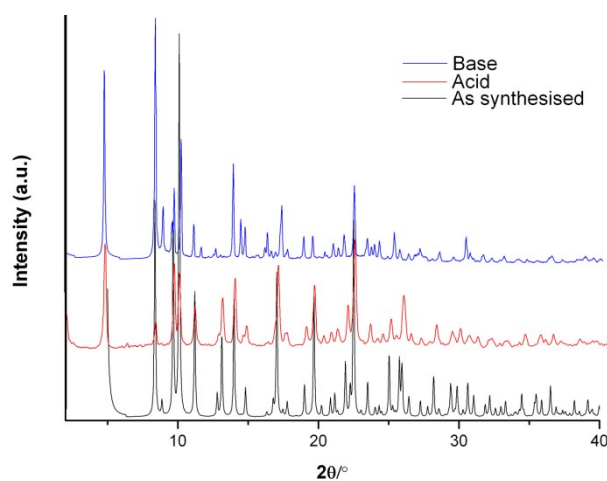


Figure S1 PXRD pattern of synthesised SPM1 (black), SPM1@acid(red) and SPM1@base (blue).

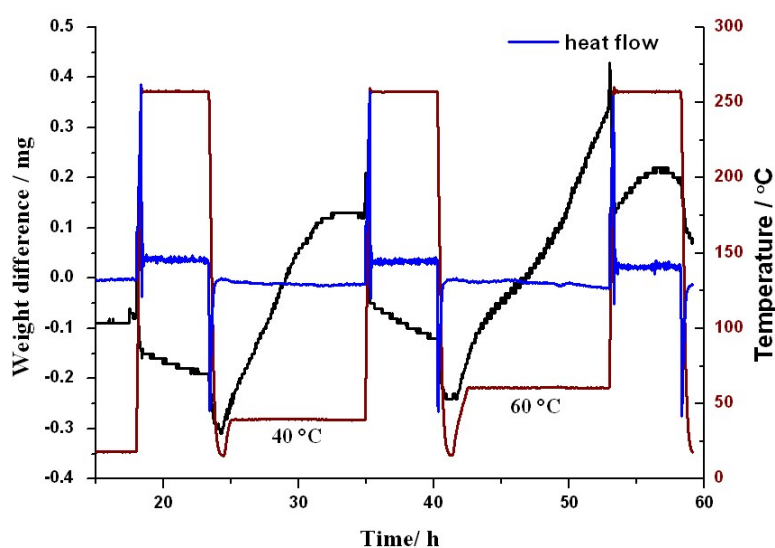
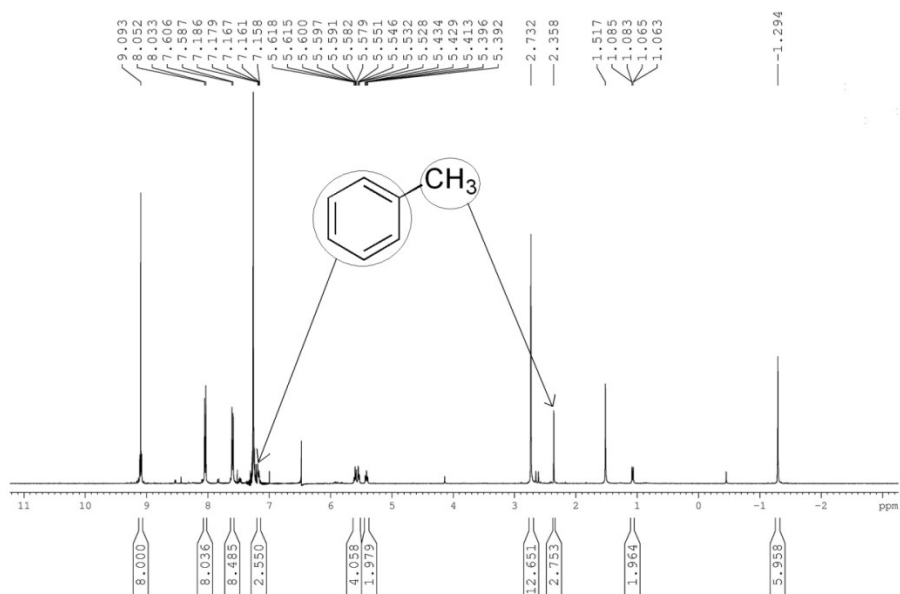
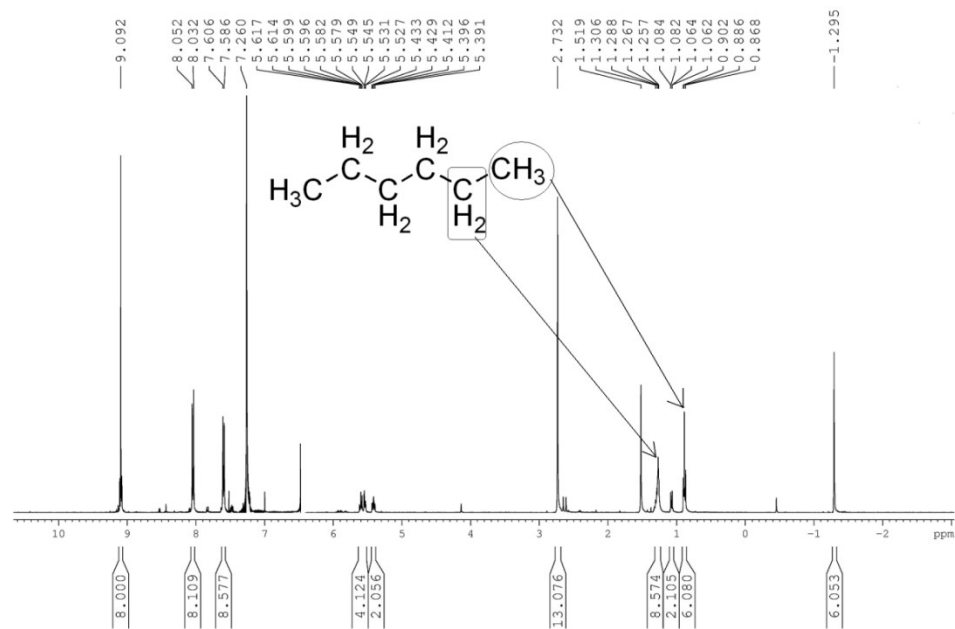


Figure S2 Weight change upon n-hexane vapour uptake in SPM 1 at 40 °C and 60 °C (black), temperature and heat flow change upon time is shown in red and blue respectively.

NMR spectrum



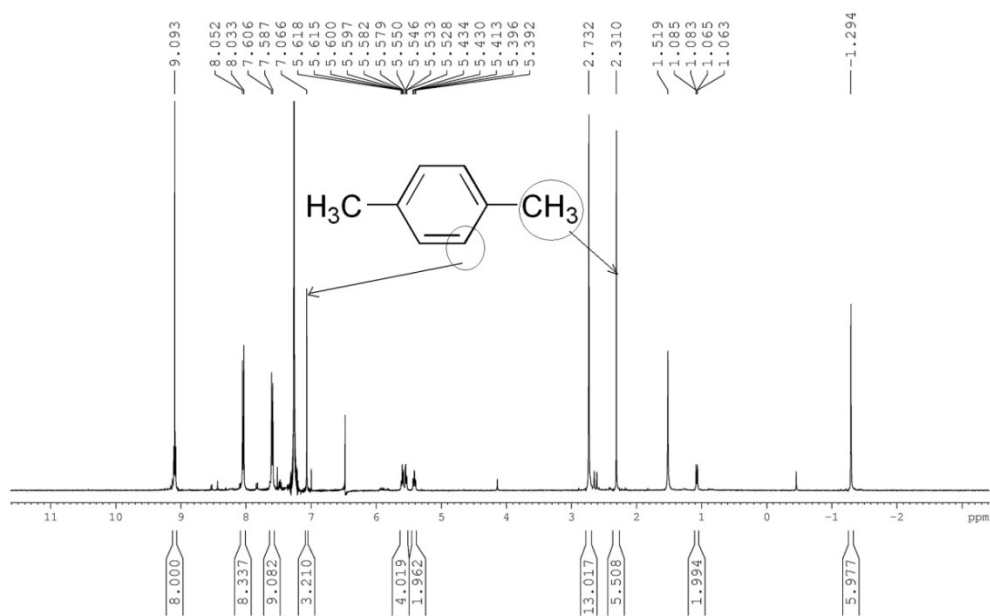
1 C toluene



1 C n-hexane



1 \subset benzene



1 \subset *para*-xylene