

## Supporting Information

### Electrical Conductivity in Two Mixed-Valence Liquids

Wenzhi Yao, Steven P. Kelley, Robin D. Rogers,<sup>a</sup> and Thomas P. Vaid\*

Department of Chemistry, The University of Alabama, Tuscaloosa, Alabama 35487.

<sup>a</sup> Current Address: Department of Chemistry, McGill University, Montreal, QC H3A 0B8.

#### Contents

**Figure 1.** Current versus time plot 1 for first 0.15 g 1:1 BuFc/BuFc<sup>+</sup>NTf<sub>2</sub><sup>-</sup> sample (1.0 V potential is applied to the sample for 24 hours in anaerobic and dry environment at room temperature)

**Figure 2.** Current versus time plot 2 for first 0.15 g 1:1 BuFc/BuFc<sup>+</sup>NTf<sub>2</sub><sup>-</sup> sample (1.0 V potential is applied to the sample for 24 hours in anaerobic and dry environment at room temperature)

**Figure 3.** Current versus time plot 3 for first 0.15 g 1:1 BuFc/BuFc<sup>+</sup>NTf<sub>2</sub><sup>-</sup> sample (1.0 V potential is applied to the sample for 24 hours in anaerobic and dry environment at room temperature)

**Figure 4.** Current versus time plot 4 for first 0.15 g 1:1 BuFc/BuFc<sup>+</sup>NTf<sub>2</sub><sup>-</sup> sample (1.0 V potential is applied to the sample for 24 hours in anaerobic and dry environment at room temperature)

**Figure 5.** Current versus time plot 1 for second 0.15 g 1:1 BuFc/BuFc<sup>+</sup>NTf<sub>2</sub><sup>-</sup> sample (1.0 V potential is applied to the sample for 24 hours in anaerobic and dry environment at room temperature)

**Figure 6.** Current versus time plot 2 for second 0.15 g 1:1 BuFc/BuFc<sup>+</sup>NTf<sub>2</sub><sup>-</sup> sample (1.0 V potential is applied to the sample for 24 hours in anaerobic and dry environment at room temperature)

**Figure 7.** Current versus time plot 3 for second 0.15 g 1:1 BuFc/BuFc<sup>+</sup>NTf<sub>2</sub><sup>-</sup> sample (1.0 V potential is applied to the sample for 24 hours in anaerobic and dry environment at room temperature)

**Figure 8.** Current versus time plot 4 for second 0.15 g 1:1 BuFc/BuFc<sup>+</sup>NTf<sub>2</sub><sup>-</sup> sample (1.0 V potential is applied to the sample for 24 hours in anaerobic and dry environment at room temperature)

**Figure 9.** Current versus time plot 1 for first 0.158 g 1:1 TEMPO/TEMPO<sup>+</sup>NTf<sub>2</sub><sup>-</sup> sample (1.0 V potential is applied to the sample for 24 hours in anaerobic and dry environment at ~43°C)

**Figure 10.** Current versus time plot 2 for first 0.158 g 1:1 TEMPO/TEMPO<sup>+</sup>NTf<sub>2</sub><sup>-</sup> sample (1.0 V potential is applied to the sample for 24 hours in anaerobic and dry environment at ~43°C)

**Figure 11.** Current versus time plot 3 for first 0.158 g 1:1 TEMPO/TEMPO<sup>+</sup>NTf<sub>2</sub><sup>-</sup> sample (1.0 V potential is applied to the sample for 24 hours in anaerobic and dry environment at ~43°C)

**Figure 12.** Current versus time plot 1 for second 0.134 g 1:1 TEMPO/TEMPO<sup>+</sup>NTf<sub>2</sub><sup>-</sup> sample (1.0 V potential is applied to the sample for 24 hours in anaerobic and dry environment at ~43°C)

**Figure 13.** Current versus time plot 2 for second 0.134 g 1:1 TEMPO/TEMPO<sup>+</sup>NTf<sub>2</sub><sup>-</sup> sample (1.0 V potential is applied to the sample for 24 hours in anaerobic and dry environment at ~43°C)

**Figure 14.** Current versus time plot 3 for second 0.134 g 1:1 TEMPO/TEMPO<sup>+</sup>NTf<sub>2</sub><sup>-</sup> sample (1.0 V potential is applied to the sample for 24 hours in anaerobic and dry environment at ~43°C)

**Figure 15.** <sup>1</sup>H NMR for 1.0M BuFc in CD<sub>3</sub>CN at 300.5 K

**Figure 16.** <sup>1</sup>H NMR for 1.0M BuFc<sup>+</sup>OTf in CD<sub>3</sub>CN at 300.5 K

**Figure 17.** <sup>1</sup>H NMR for 1.0M 1:1 BuFc/BuFc<sup>+</sup>OTf in CD<sub>3</sub>CN at 300.5 K

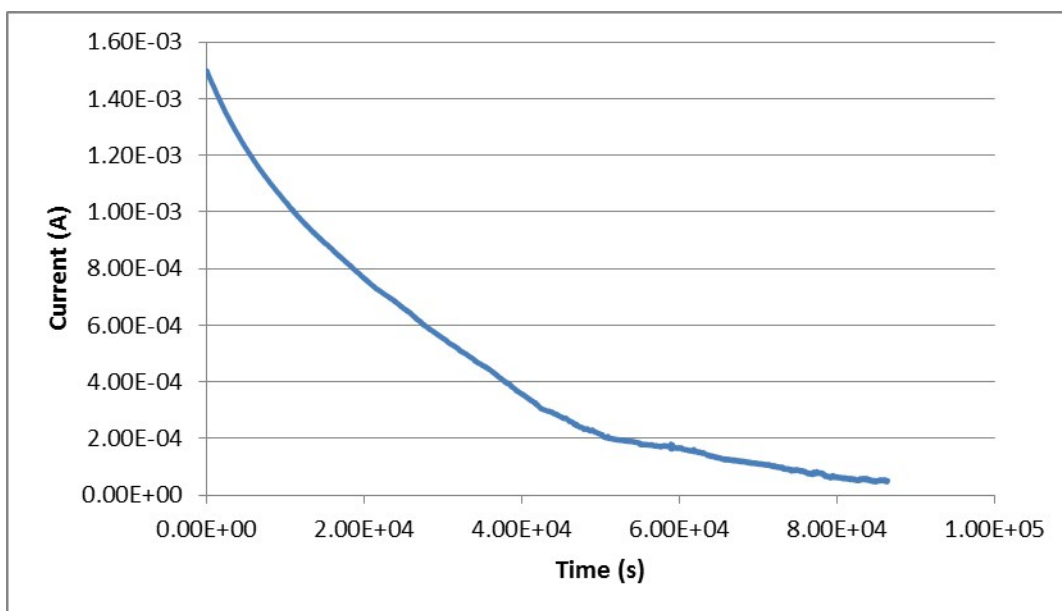
**Figure 18.** UV-vis spectrum for BuFc in CH<sub>3</sub>CN at room temperature

**Figure 19.** UV-vis spectrum for BuFc<sup>+</sup>NTf<sub>2</sub><sup>-</sup> in CH<sub>3</sub>CN at room temperature

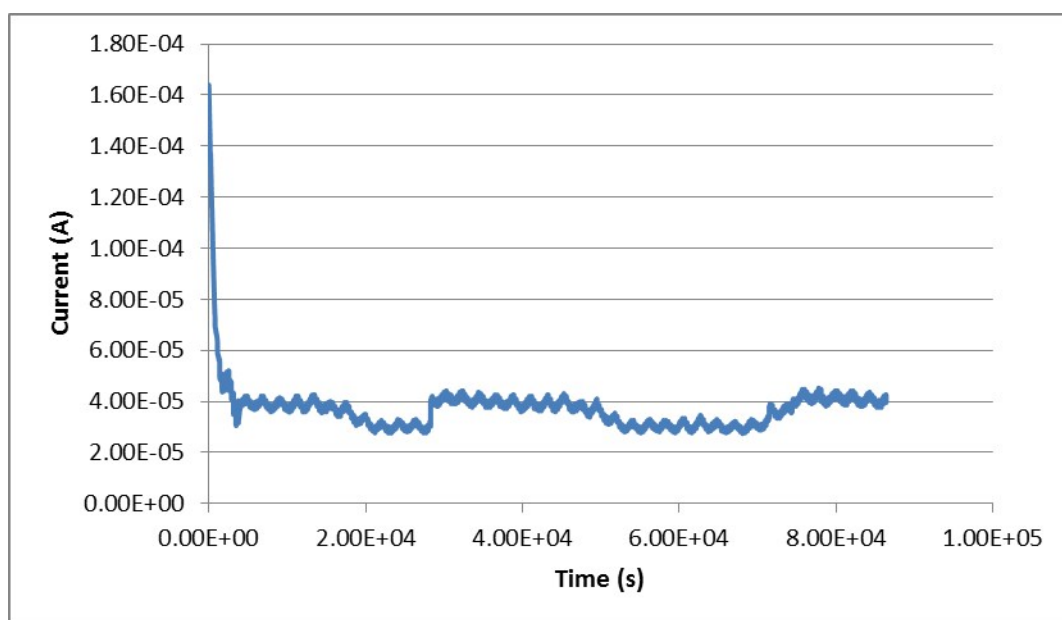
**Figure 20.** UV-vis spectrum for BuFc<sup>+</sup>OTf in CH<sub>3</sub>CN at room temperature

**Figure 21.** UV-vis spectrum for TEMPO in CH<sub>3</sub>CN at room temperature

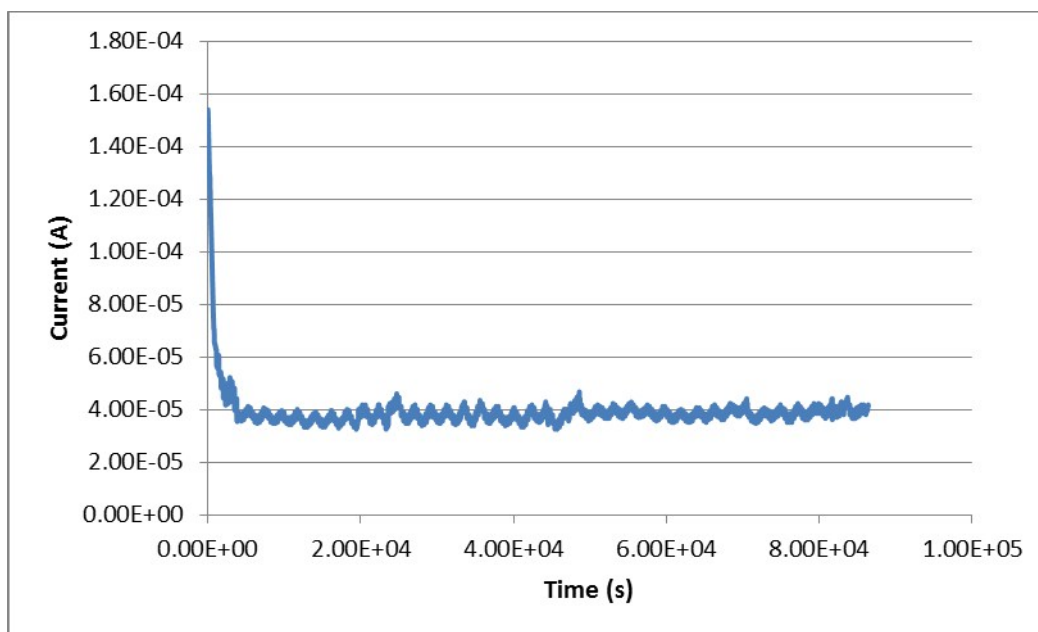
**Figure 22.** UV-vis spectrum for TEMPO<sup>+</sup>NTf<sub>2</sub><sup>-</sup> in CH<sub>3</sub>CN at room temperature



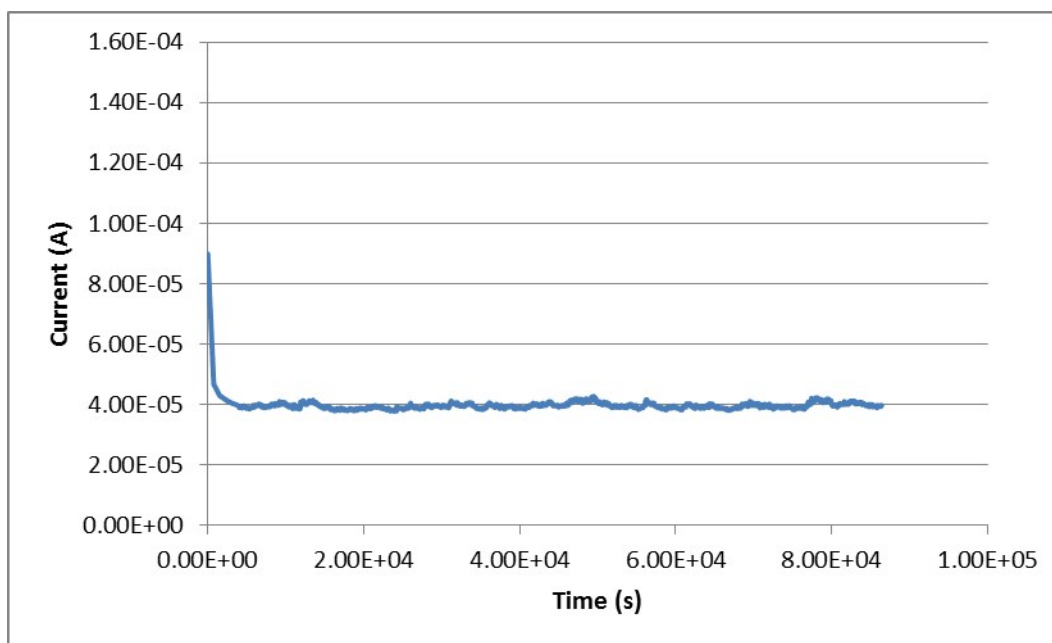
**Figure 1.** Current versus time plot 1 for first 0.15 g 1:1 BuFc/BuFc<sup>+</sup>NTf<sub>2</sub><sup>-</sup> sample (1.0 V potential is applied to the sample for 24 hours in anaerobic and dry environment at room temperature)



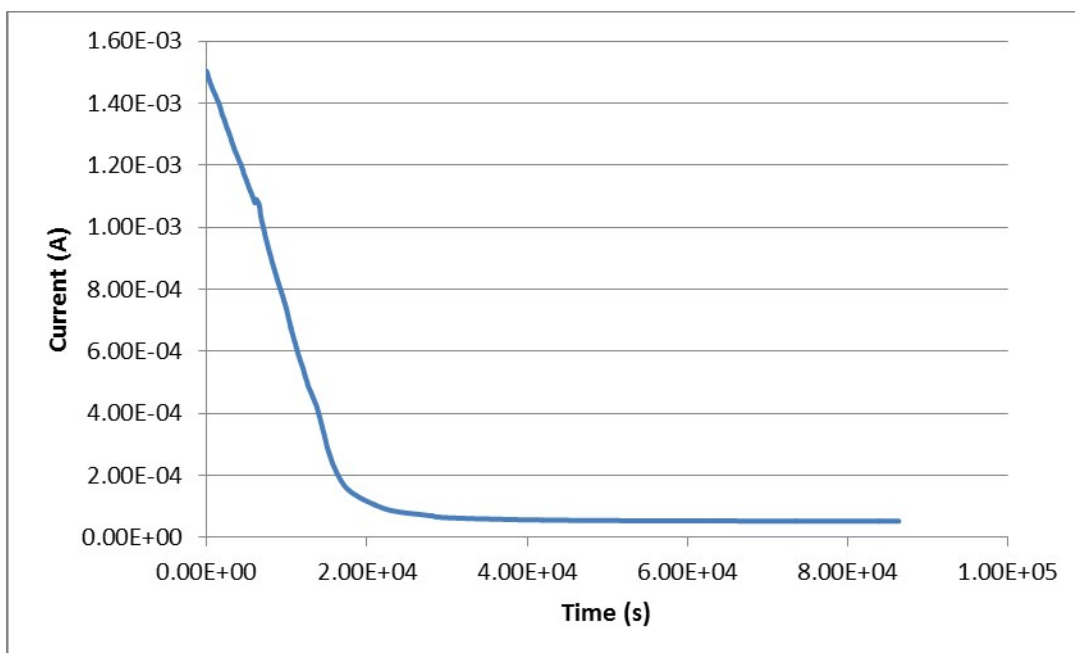
**Figure 2.** Current versus time plot 2 for first 0.15 g 1:1 BuFc/BuFc<sup>+</sup>NTf<sub>2</sub><sup>-</sup> sample (1.0 V potential is applied to the sample for 24 hours in anaerobic and dry environment at room temperature)



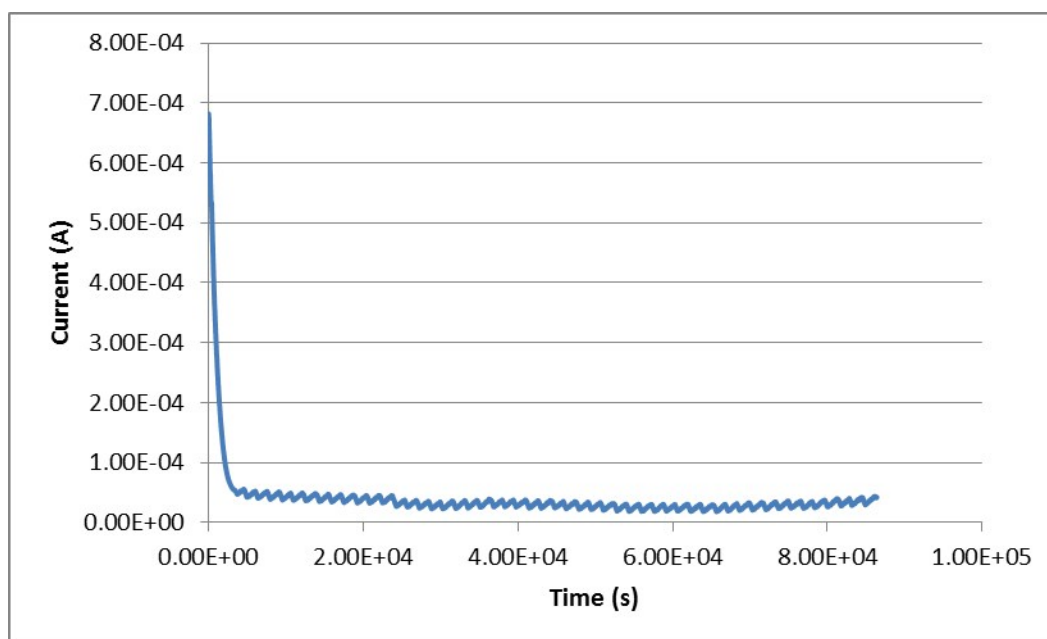
**Figure 3.** Current versus time plot 3 for first 0.15 g 1:1 BuFc/BuFc<sup>+</sup>NTf<sub>2</sub><sup>-</sup> sample (1.0 V potential is applied to the sample for 24 hours in anaerobic and dry environment at room temperature)



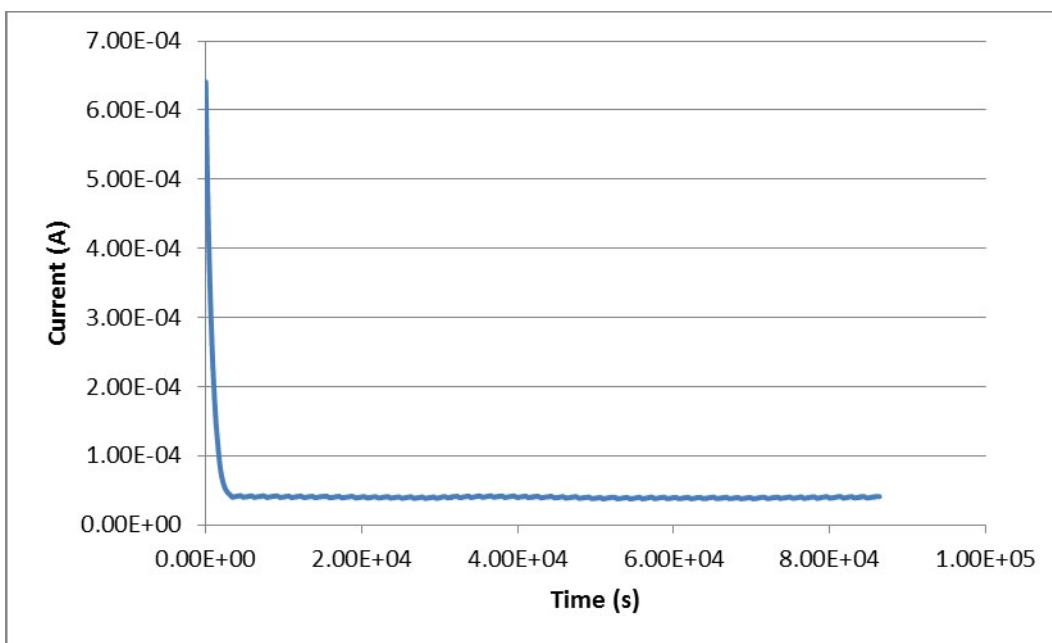
**Figure 4.** Current versus time plot 4 for first 0.15 g 1:1 BuFc/BuFc<sup>+</sup>NTf<sub>2</sub><sup>-</sup> sample (1.0 V potential is applied to the sample for 24 hours in anaerobic and dry environment at room temperature)



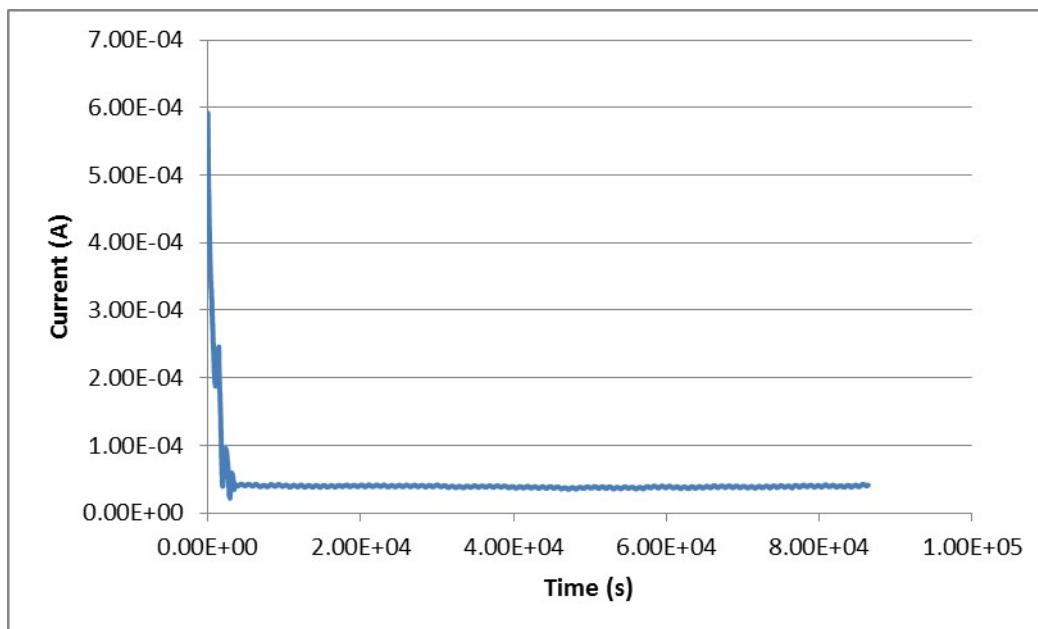
**Figure 5.** Current versus time plot 1 for second 0.15 g 1:1 BuFc/BuFc<sup>+</sup>NTf<sub>2</sub><sup>-</sup> sample (1.0 V potential is applied to the sample for 24 hours in anaerobic and dry environment at room temperature)



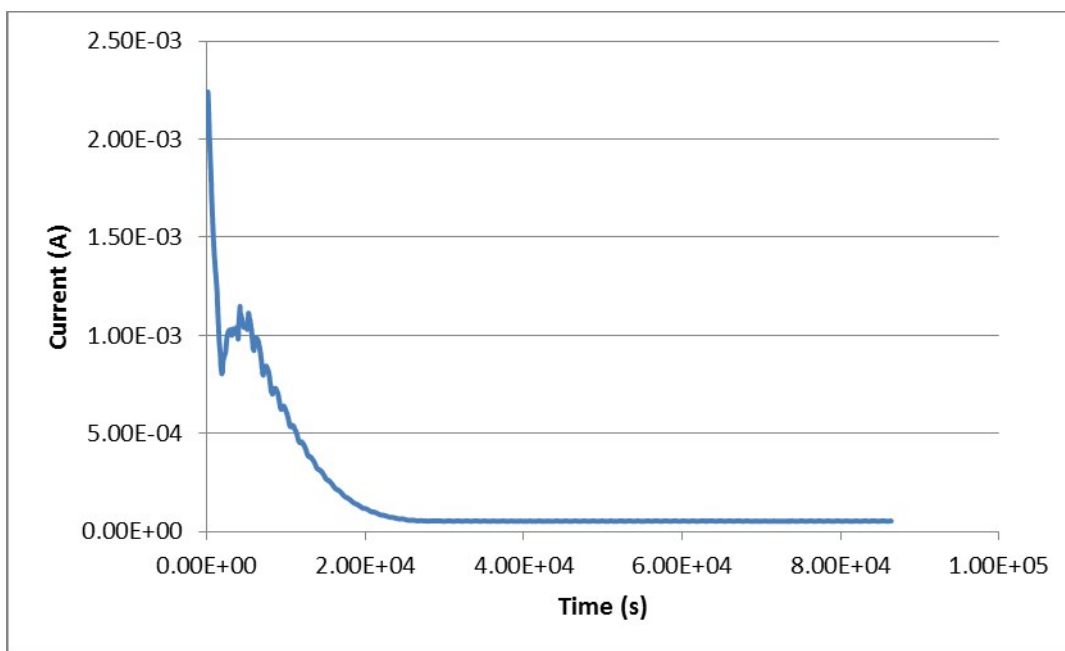
**Figure 6.** Current versus time plot 2 for second 0.15 g 1:1 BuFc/BuFc<sup>+</sup>NTf<sub>2</sub><sup>-</sup> sample (1.0 V potential is applied to the sample for 24 hours in anaerobic and dry environment at room temperature)



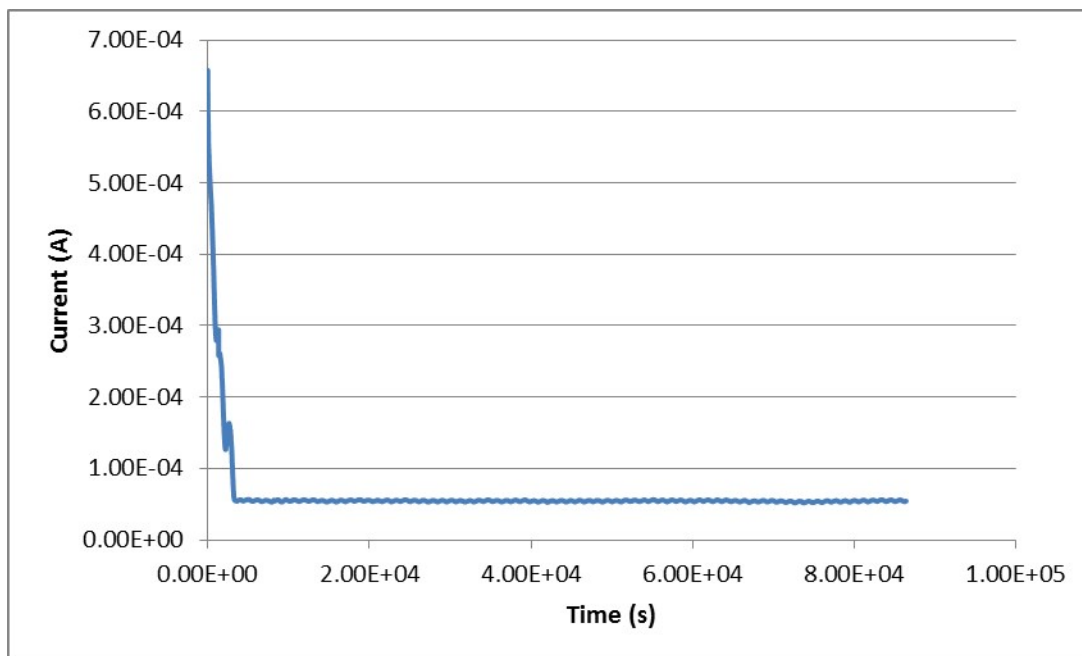
**Figure 7.** Current versus time plot 3 for second 0.15 g 1:1 BuFc/BuFc<sup>+</sup>NTf<sub>2</sub><sup>-</sup> sample (1.0 V potential is applied to the sample for 24 hours in anaerobic and dry environment at room temperature)



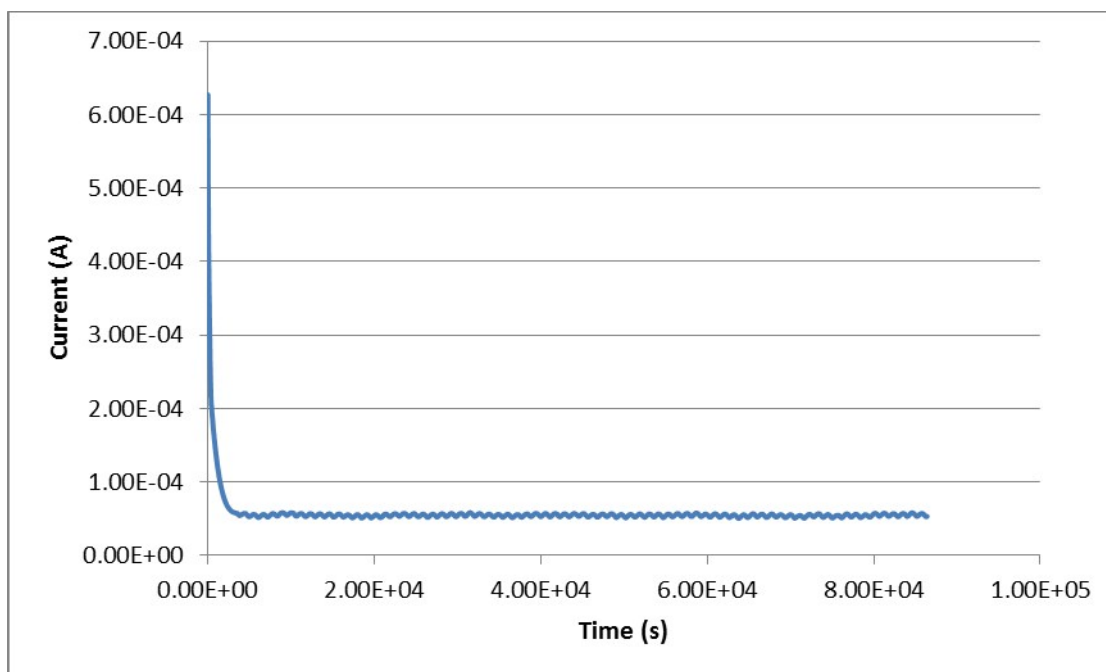
**Figure 8.** Current versus time plot 4 for second 0.15 g 1:1 BuFc/BuFc<sup>+</sup>NTf<sub>2</sub><sup>-</sup> sample (1.0 V potential is applied to the sample for 24 hours in anaerobic and dry environment at room temperature)



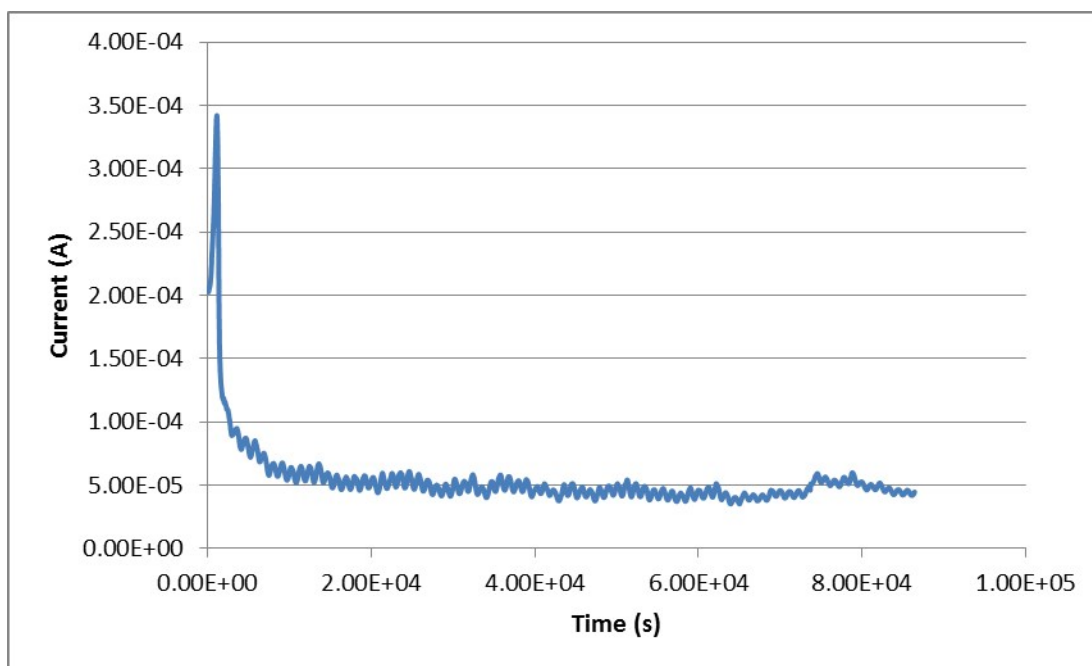
**Figure 9.** Current versus time plot 1 for first 0.158 g 1:1 TEMPO/TEMPO<sup>+</sup>NTf<sub>2</sub><sup>-</sup> sample (1.0 V potential is applied to the sample for 24 hours in anaerobic and dry environment at ~43°C)



**Figure 10.** Current versus time plot 2 for first 0.158 g 1:1 TEMPO/TEMPO<sup>+</sup>NTf<sub>2</sub><sup>-</sup> sample (1.0 V potential is applied to the sample for 24 hours in anaerobic and dry environment at ~43°C)

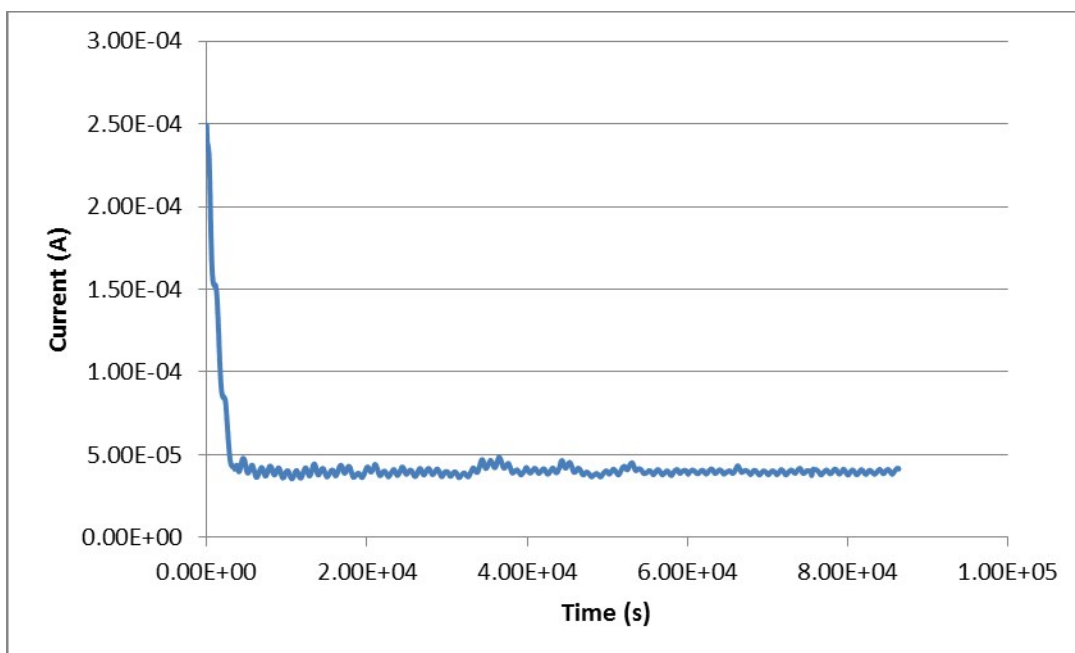


**Figure 11.** Current versus time plot 3 for first 0.158 g 1:1 TEMPO/TEMPO<sup>+</sup>NTf<sub>2</sub><sup>-</sup> sample (1.0 V potential is applied to the sample for 24 hours in anaerobic and dry environment at ~43°C)

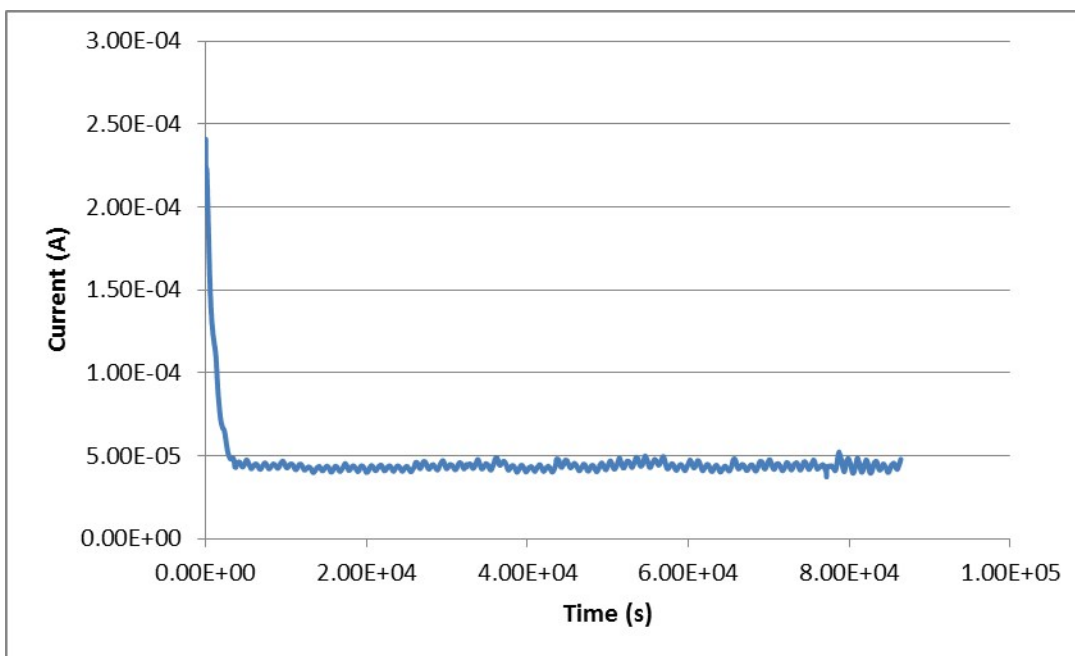


**Figure 12.** Current versus time plot 1 for second 0.134 g 1:1 TEMPO/TEMPO<sup>+</sup>NTf<sub>2</sub><sup>-</sup> sample (1.0 V potential is applied to the sample for 24 hours in anaerobic and dry environment at ~43°C)

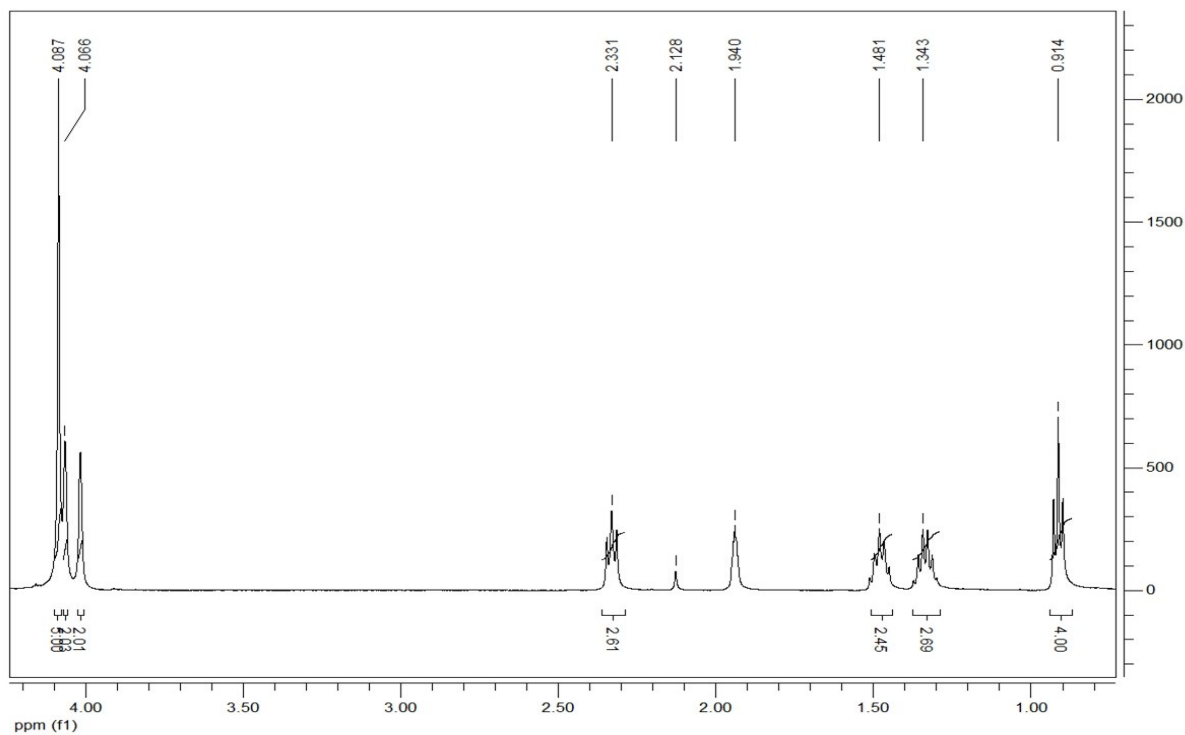




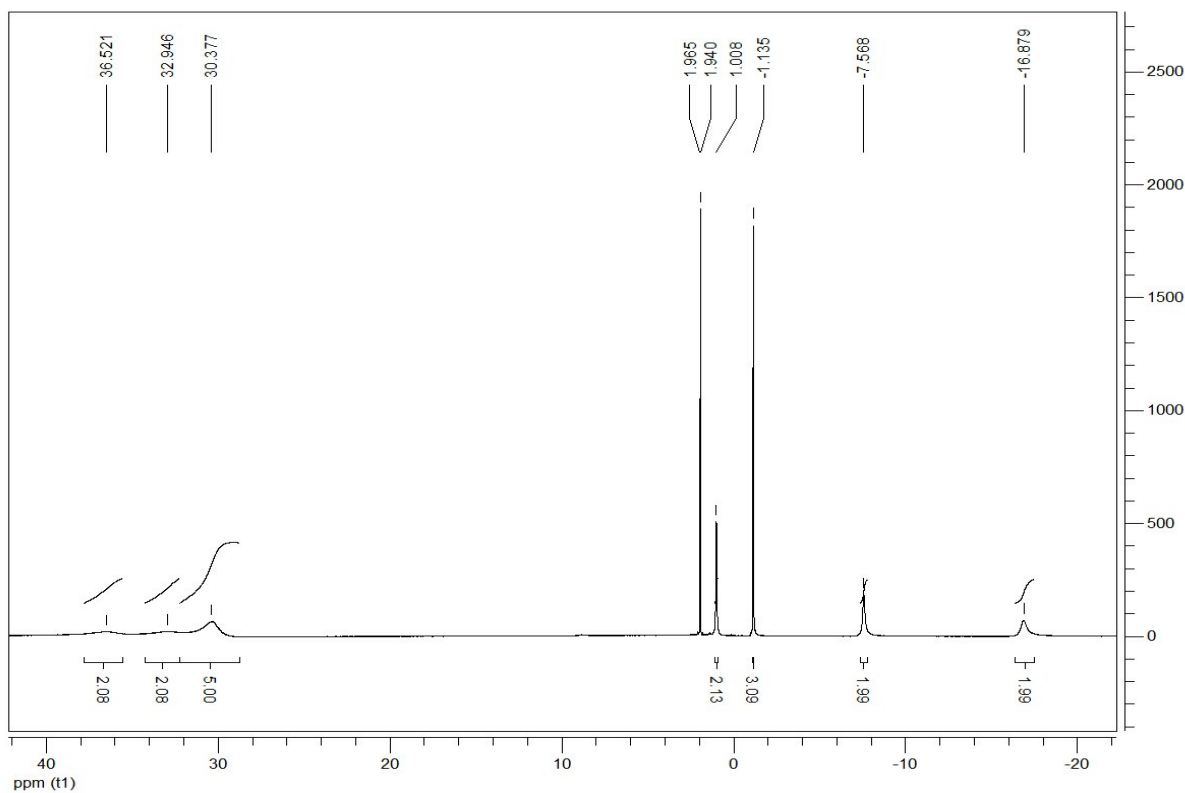
**Figure 13.** Current versus time plot 2 for second 0.134 g 1:1 TEMPO/TEMPO<sup>+</sup>NTf<sub>2</sub><sup>-</sup> sample (1.0 V potential is applied to the sample for 24 hours in anaerobic and dry environment at ~43°C)



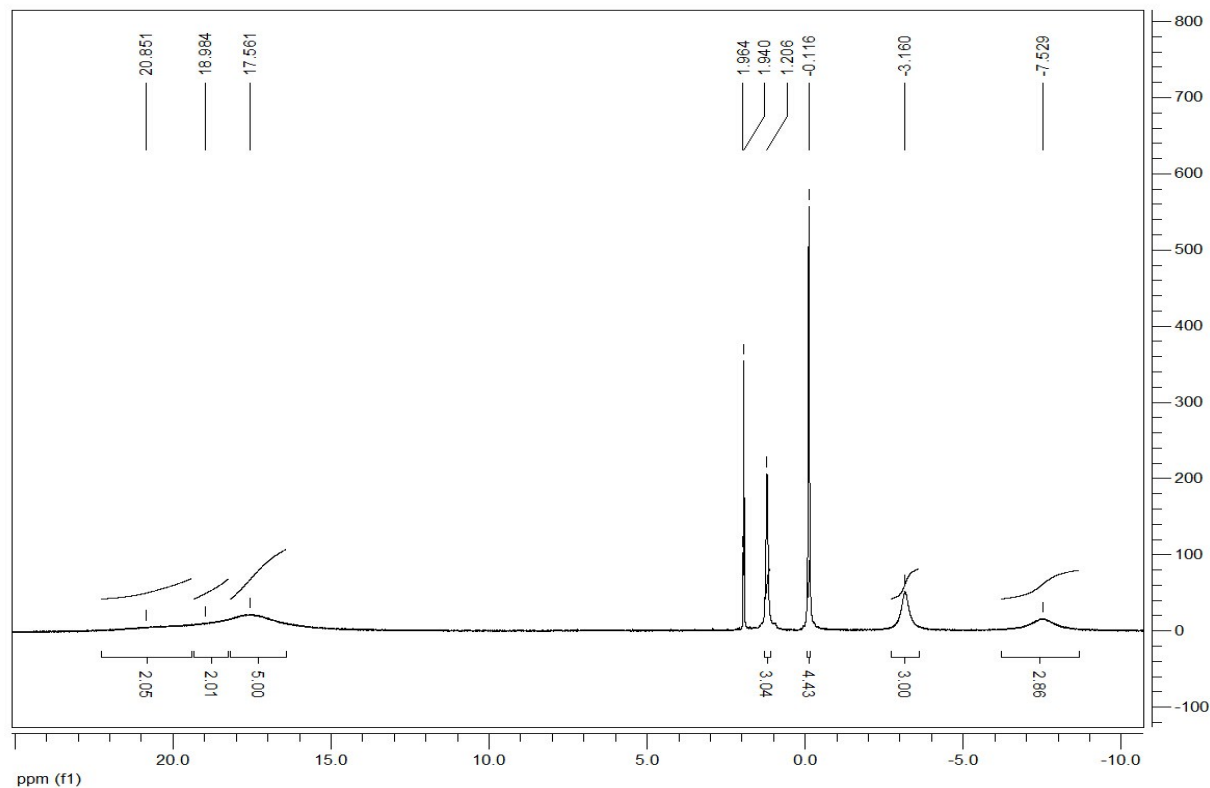
**Figure 14.** Current versus time plot 3 for second 0.134 g 1:1 TEMPO/TEMPO<sup>+</sup>NTf<sub>2</sub><sup>-</sup> sample (1.0 V potential is applied to the sample for 24 hours in anaerobic and dry environment at ~43°C)



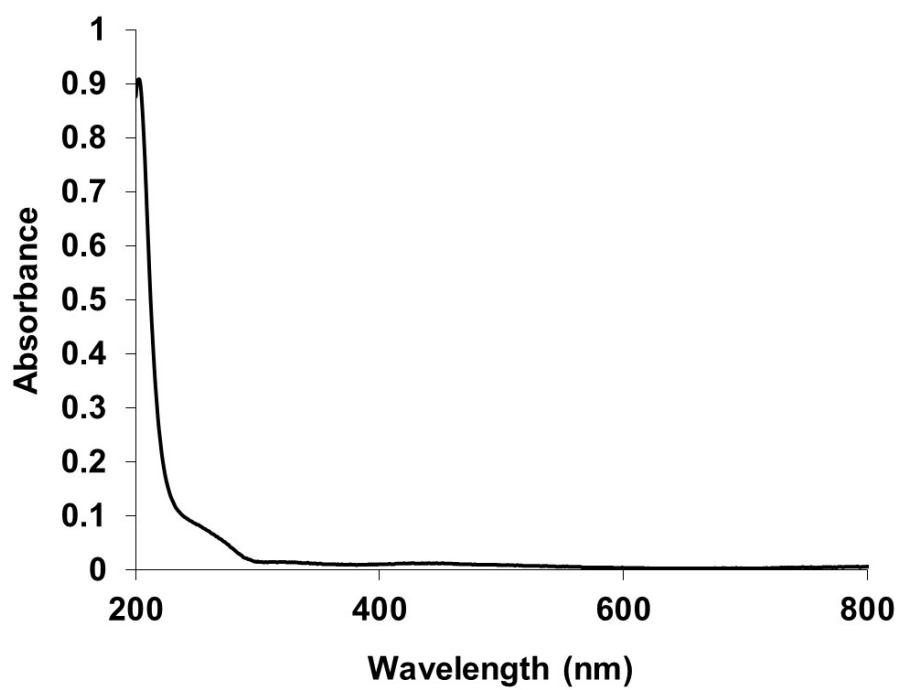
**Figure 15.** <sup>1</sup>H NMR for 1.0M BuFc in CH<sub>3</sub>CN at 300.5 K



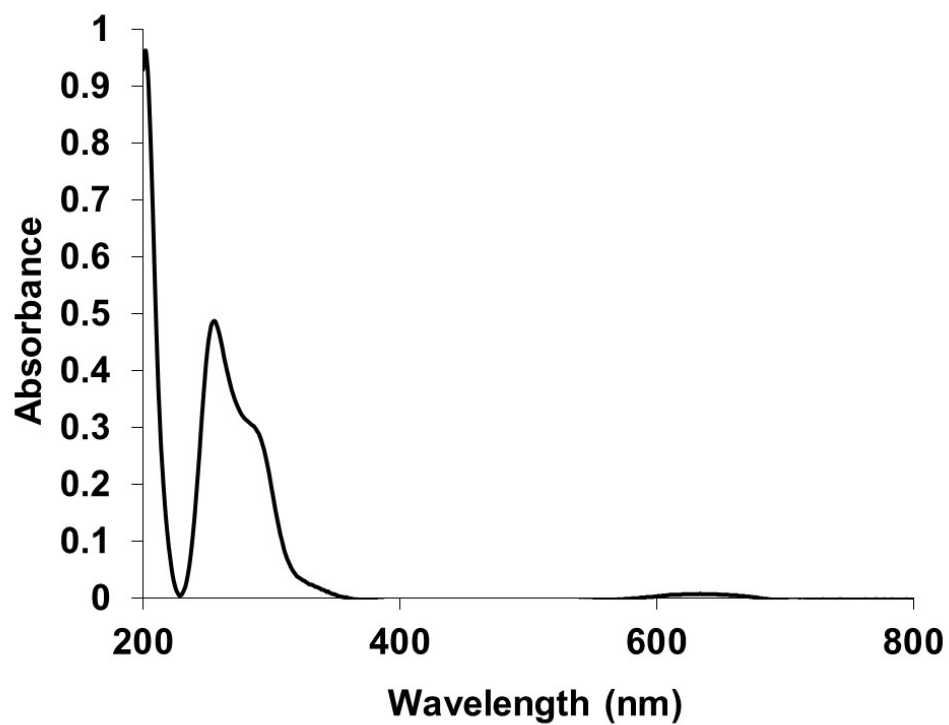
**Figure 16.** <sup>1</sup>H NMR for 1.0M BuFc<sup>+</sup>OTf in CH<sub>3</sub>CN at 300.5 K



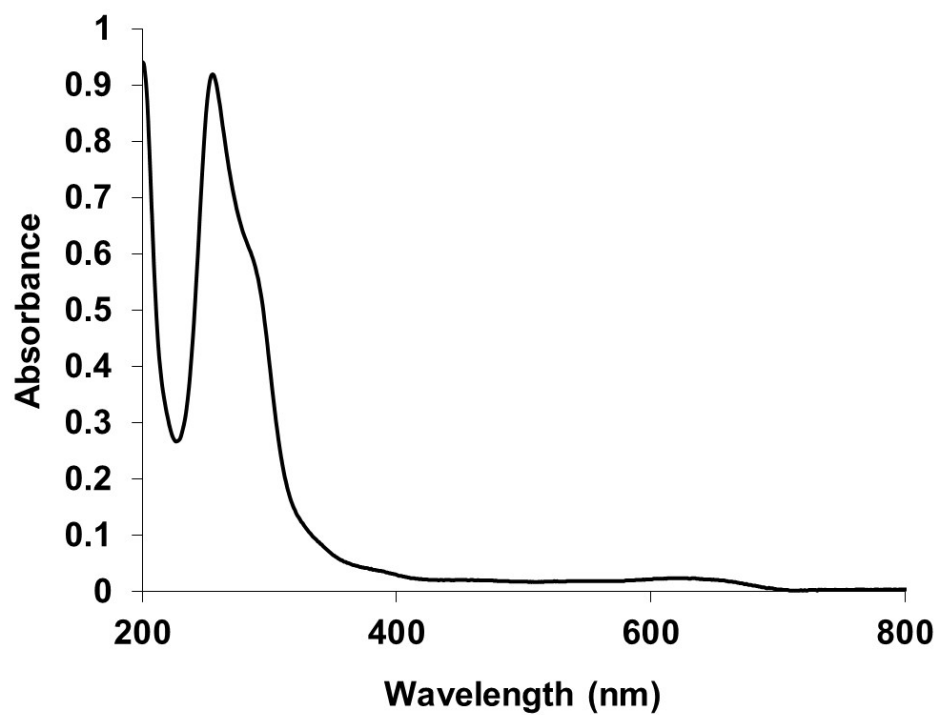
**Figure 17.** <sup>1</sup>H NMR for 1.0M 1:1 BuFc/BuFc<sup>+</sup>OTf in CH<sub>3</sub>CN at 300.5 K



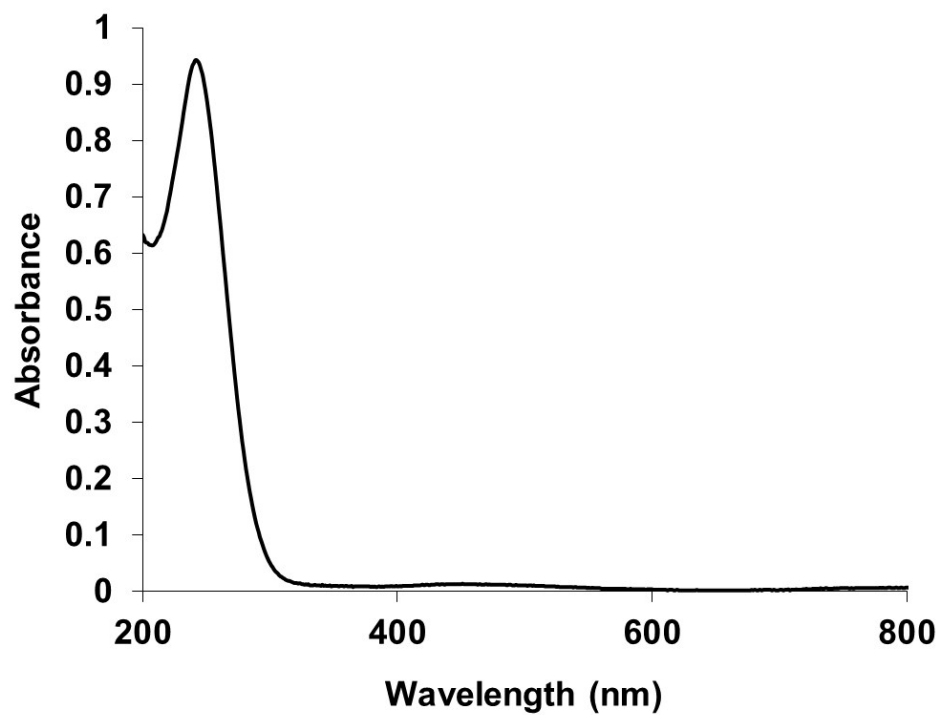
**Figure 18.** UV-vis spectrum for BuFc in CH<sub>3</sub>CN at room temperature



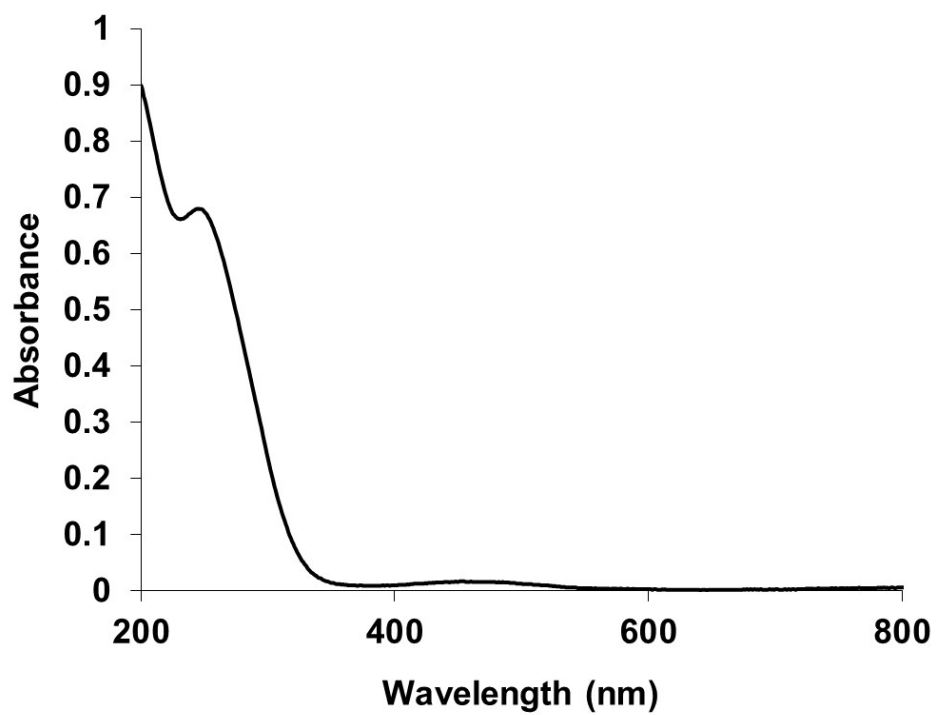
**Figure 19.** UV-vis spectrum for BuFc<sup>+</sup>NTf<sub>2</sub><sup>-</sup> in CH<sub>3</sub>CN at room temperature



**Figure 20.** UV-vis spectrum for BuFc<sup>+</sup>OTf in CH<sub>3</sub>CN at room temperature



**Figure 21.** UV-vis spectrum for TEMPO in CH<sub>3</sub>CN at room temperature



**Figure 22.** UV-vis spectrum for TEMPO<sup>+</sup>NTf<sub>2</sub><sup>-</sup> in CH<sub>3</sub>CN at room temperature