

ELECTRONIC SUPPLEMENTARY INFORMATION (ESI)

Seeded Growth of Ferrite Nanoparticles from Mn oxides : Observation of Anomalies in Magnetic Transitions

Hyon-Min Song,^{*abc} Jeffrey I. Zink^b and Niveen M. Khashab^c

^a Department of Chemistry, Dong-A University, Busan 604-714, South Korea. E-mail: hyonmin1@dau.ac.kr

^b Department of Chemistry and Biochemistry, University of California, Los Angeles, California 90095-1569, United States.

^c Smart Hybrid Materials Laboratory, Advanced Membranes and Porous Materials Center, King Abdullah University of Science and Technology, Thuwal 23955-6900, Kingdom of Saudi Arabia.

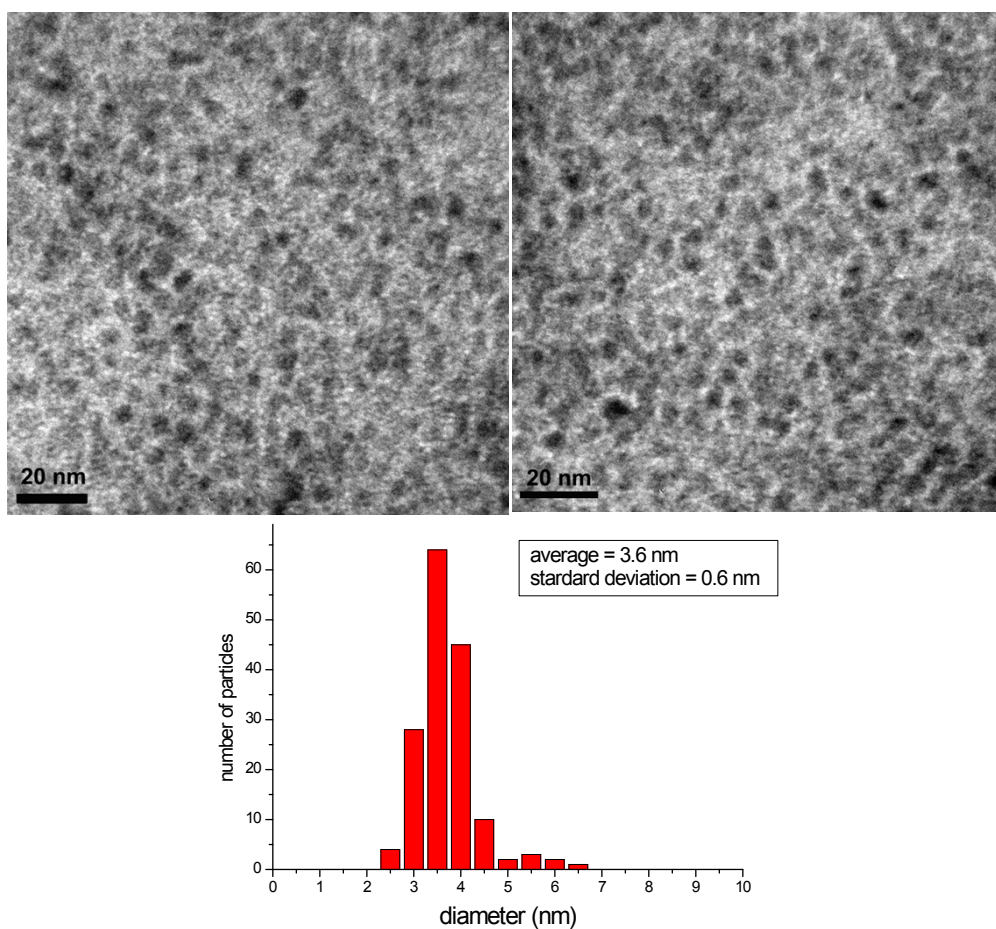


Fig. S1 TEM images and size distribution of manganese oxide seed NPs.

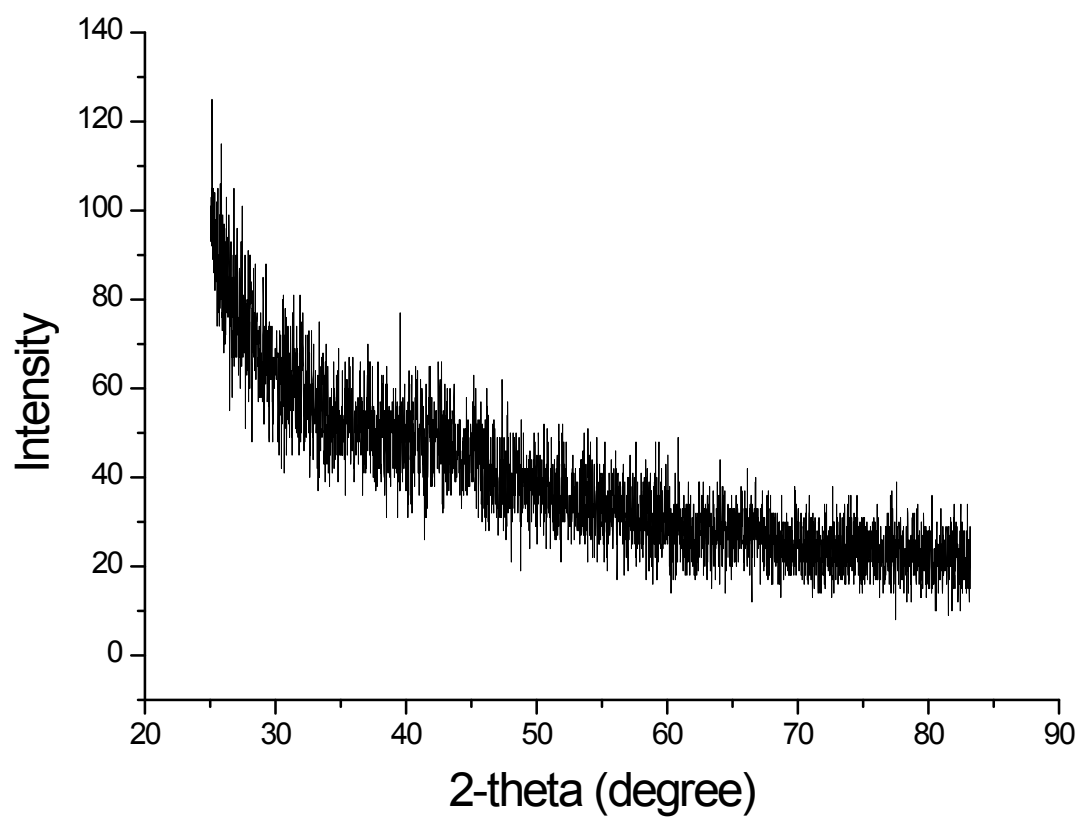


Fig. S2 XRD of manganese oxide seed NPs.

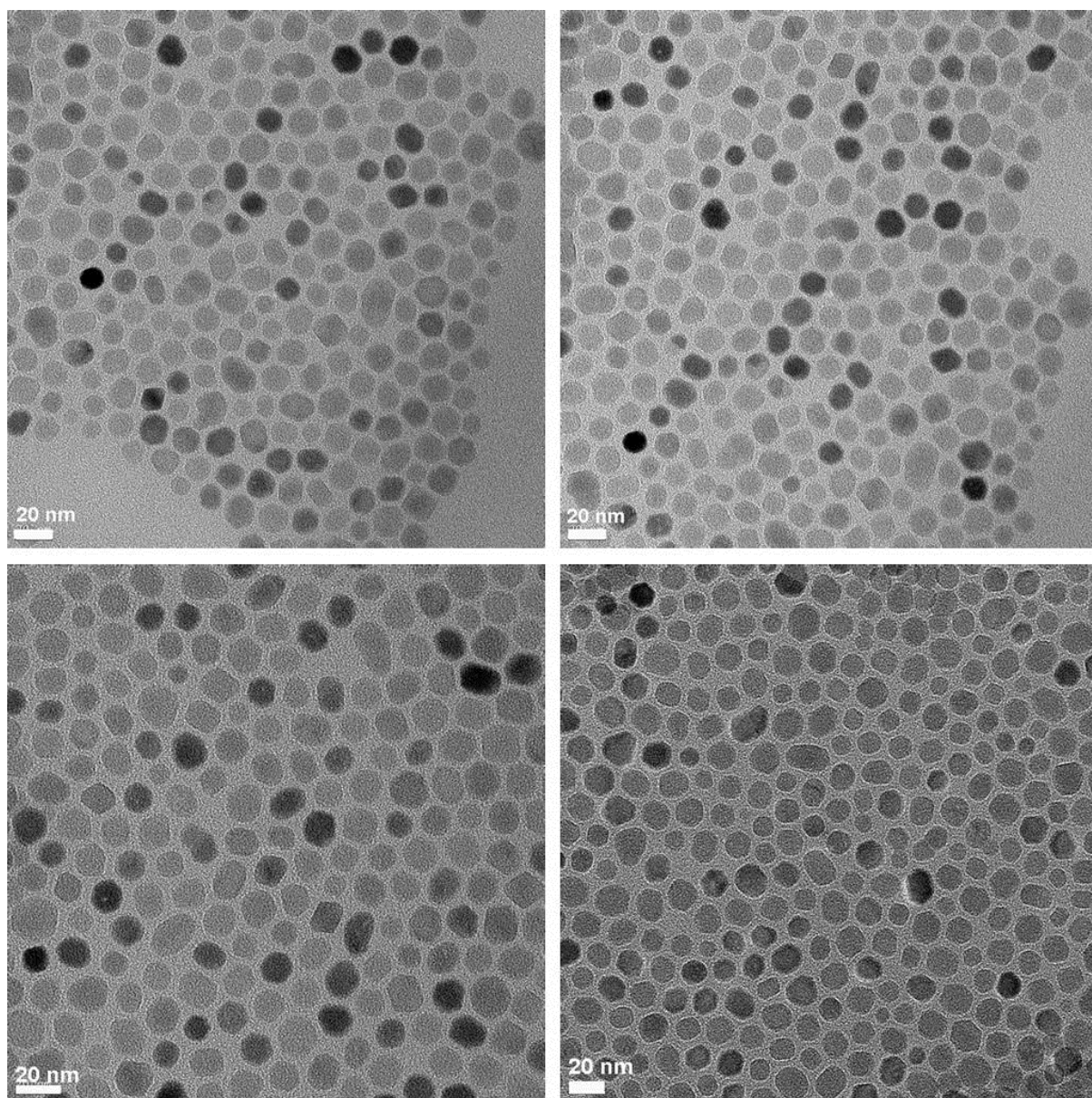


Fig. S3 TEM images of Fe_3O_4 NPs grown from manganese oxide seeds.

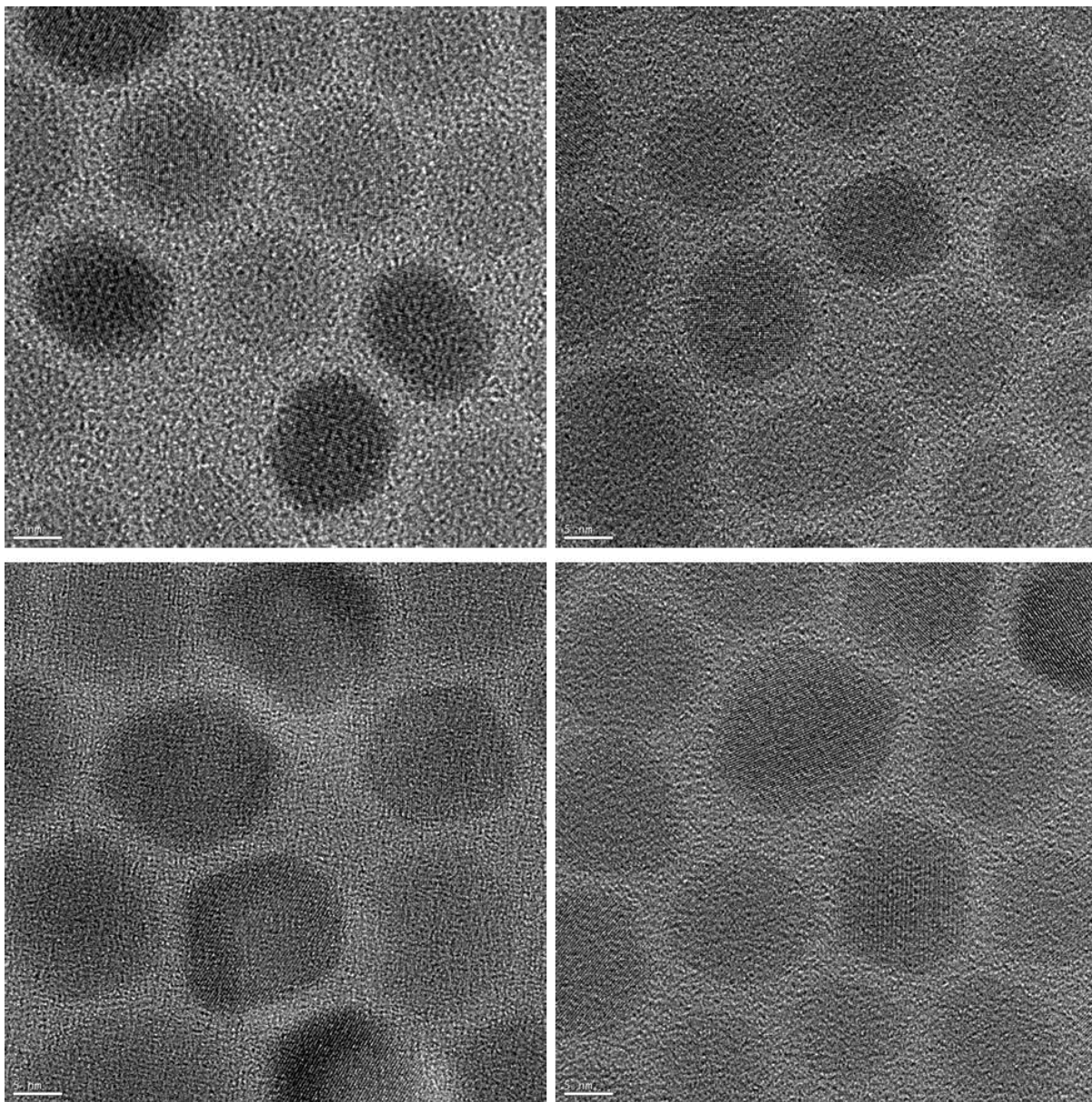


Fig. S4 HRTEM images of Fe₃O₄ NPs grown from manganese oxide seeds.

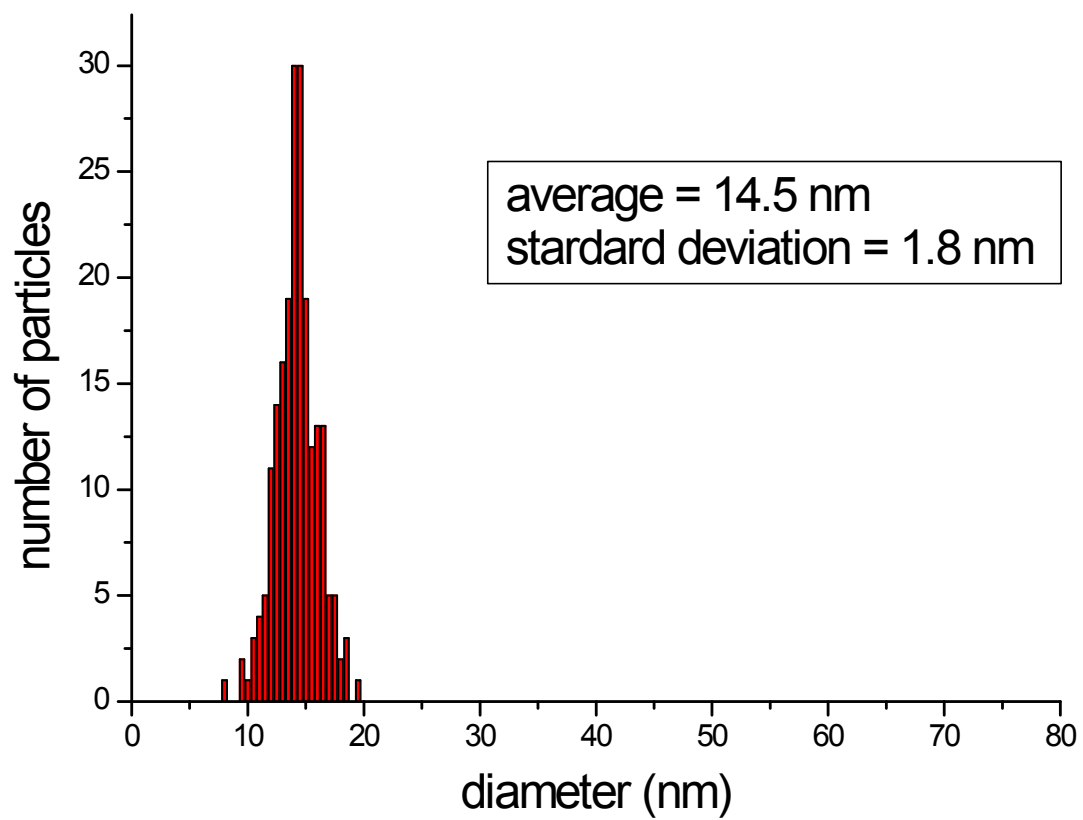


Fig. S5 Size distribution of Fe_3O_4 NPs grown from manganese oxide NPs.

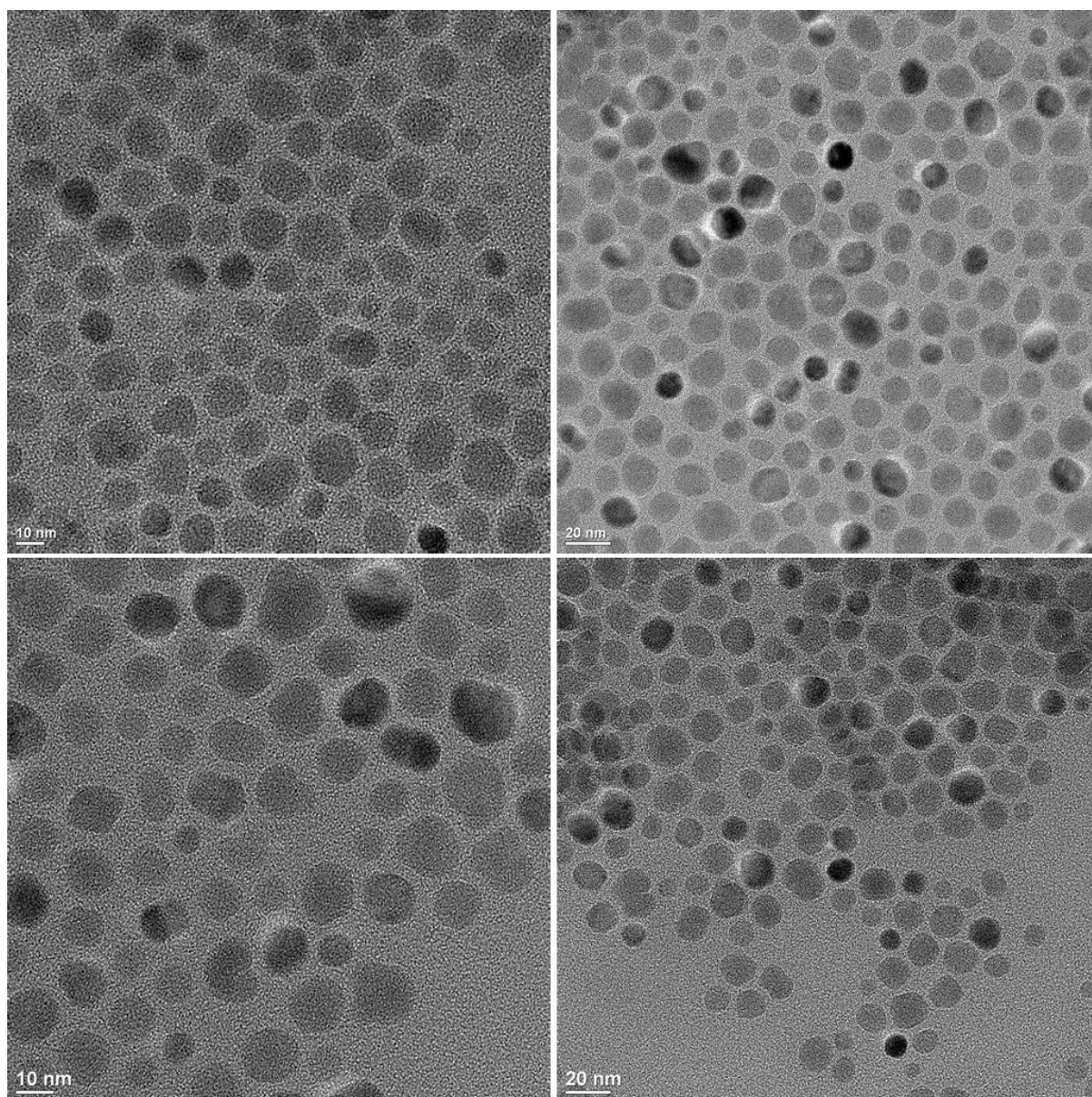


Fig. S6 TEM images of MnFe_2O_4 NPs grown from manganese oxide NPs.

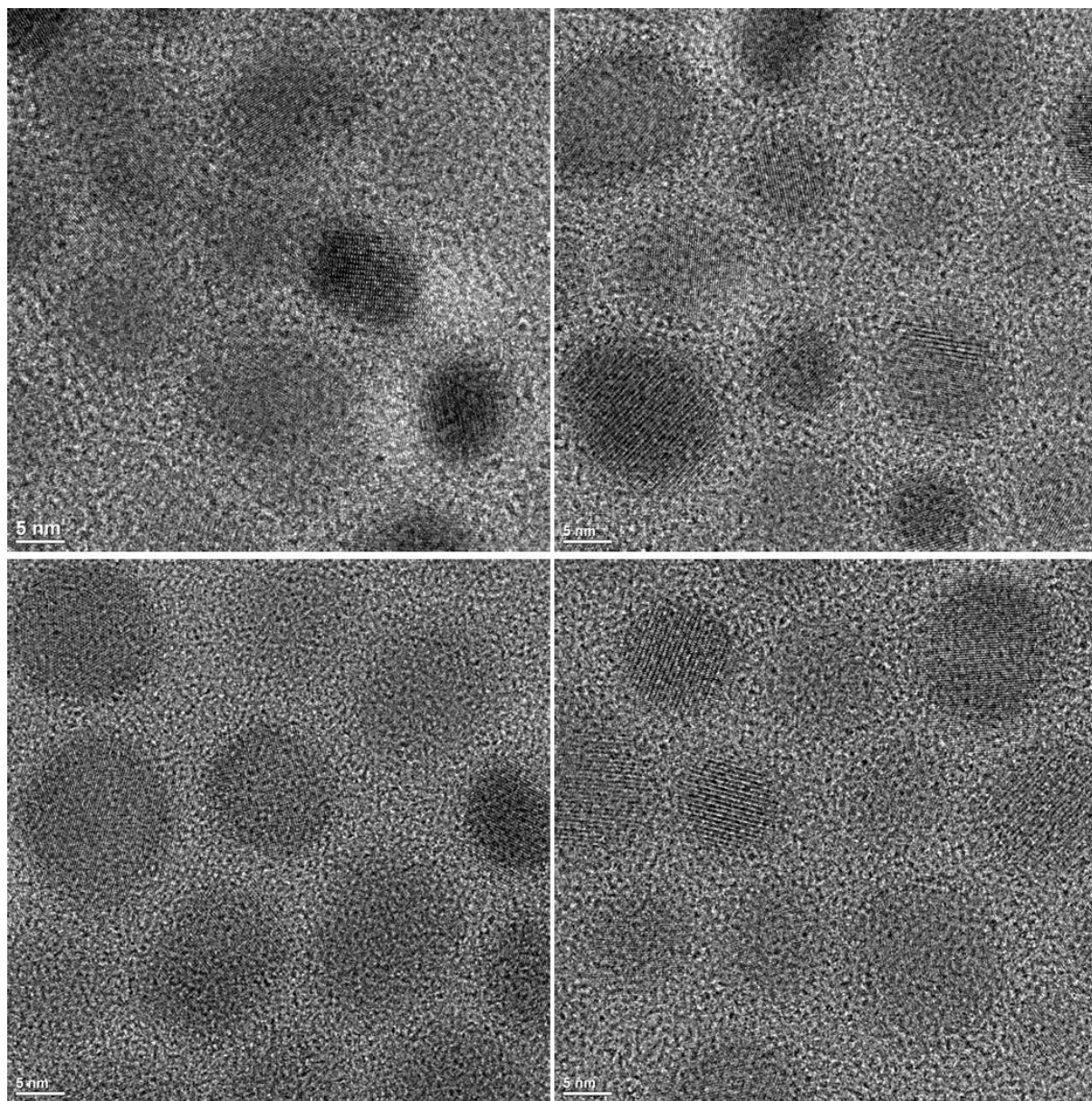


Fig. S7 HRTEM images of MnFe₂O₄ NPs grown from manganese oxide NPs.

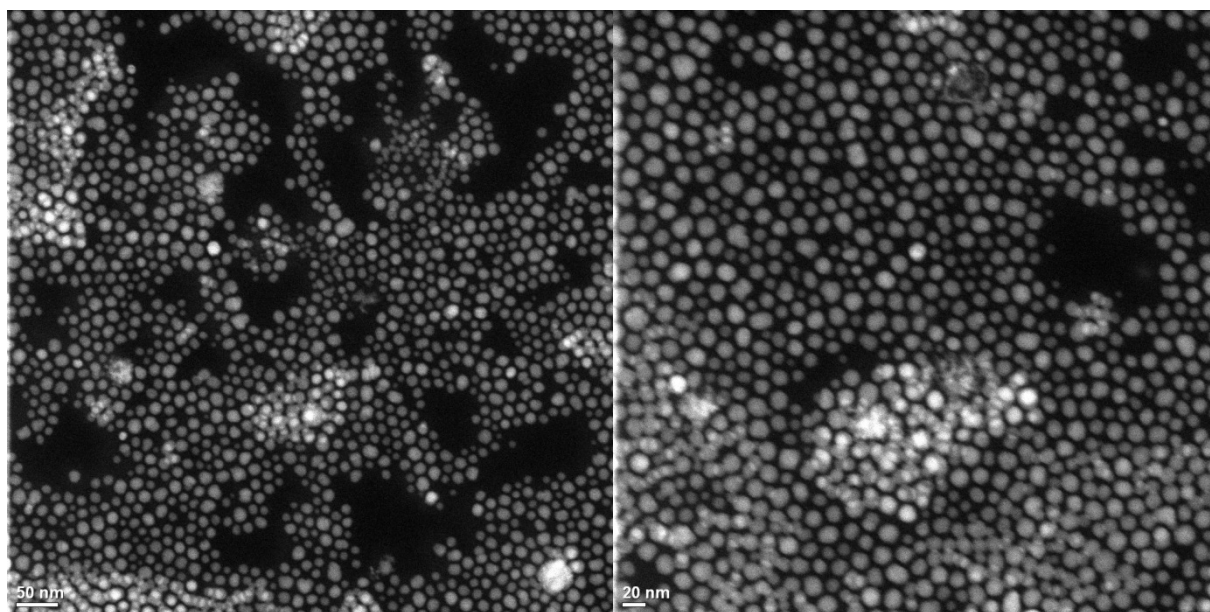


Fig. S8 STEM images of MnFe₂O₄ NPs grown from Mn oxide NPs.

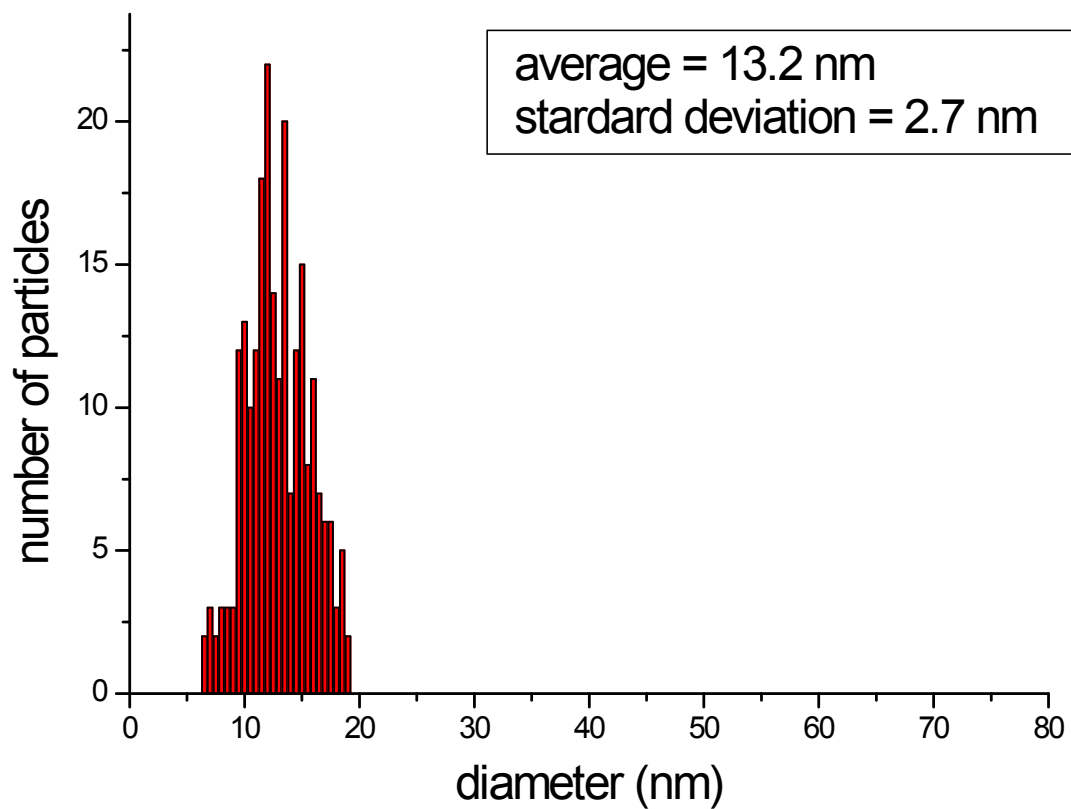


Fig. S9 Size distribution of MnFe_2O_4 NPs grown from Mn oxide NPs.

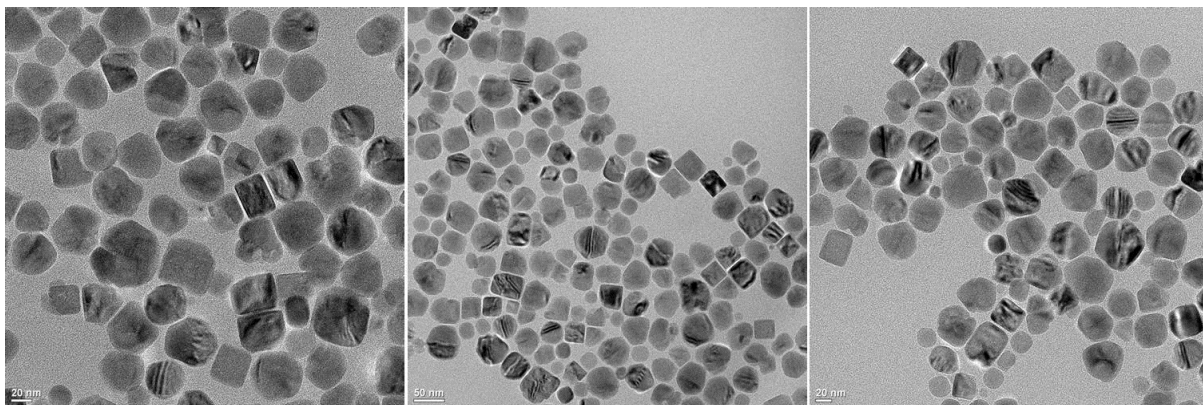


Fig. S10 TEM images of MnFe₂O₄@Mn_xFe_{1-x}O core-shell NPs.

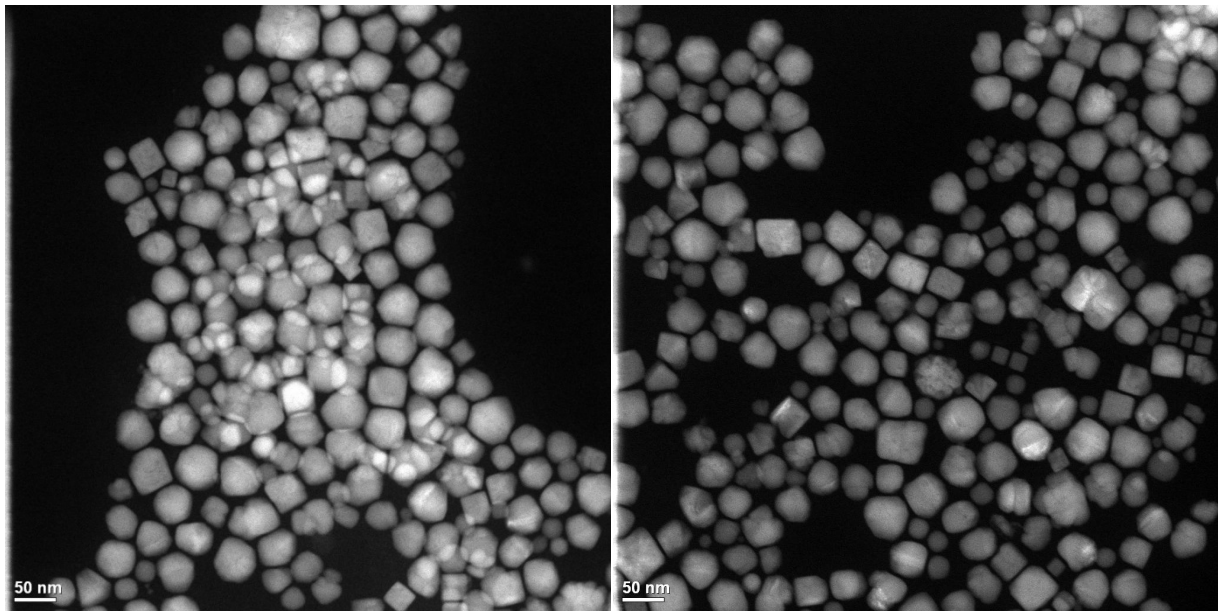


Fig. S11 STEM images of $\text{MnFe}_2\text{O}_4@ \text{Mn}_x\text{Fe}_{1-x}\text{O}$ core-shell NPs.

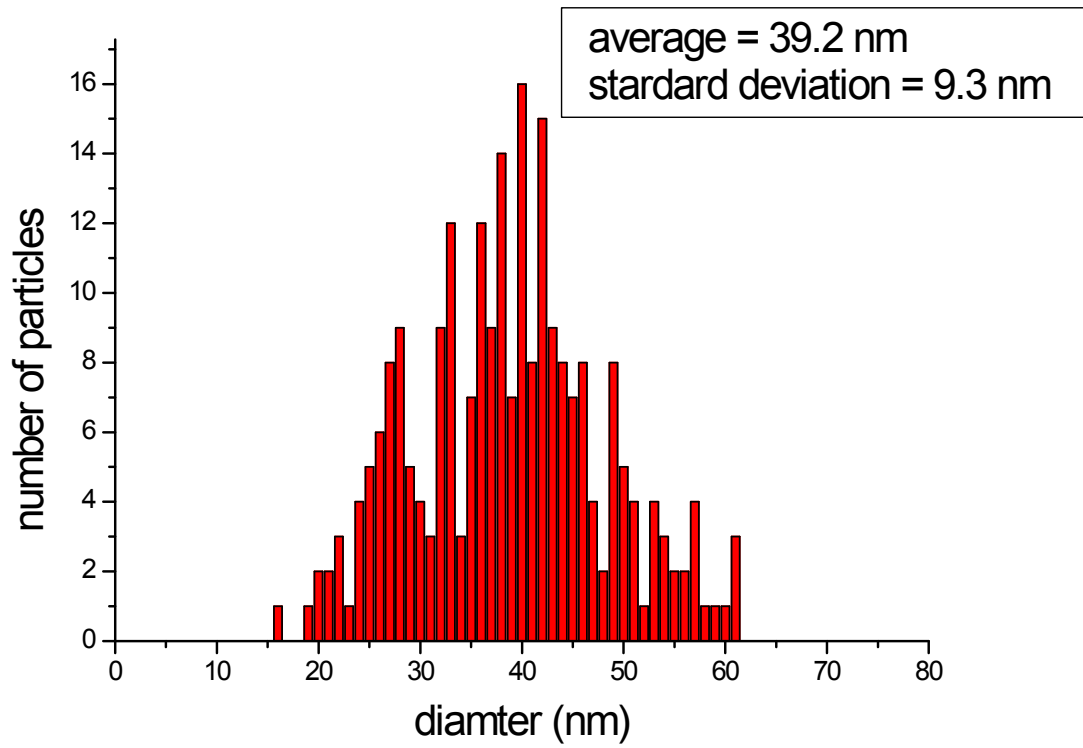


Fig. S12 Size distribution of MnFe₂O₄@Mn_xFe_{1-x}O core-shell NPs.