

Supplementary Information

S-doped Na₂Ti₆O₁₃@TiO₂ core-shell nanorods with an enhanced visible light photocatalytic performance

Chao Liu^a, Ji-yuan Liang^a, Rui-rui Han^a, Yong-zheng Wang^a, Jin Zhao^a, Qian-jin Huang^b, Jing Chen^{*b},
Wen-hua Hou^{*a}

^a *Key Laboratory of Mesoscopic Chemistry of MOE, School of Chemistry and Chemical Engineering, Nanjing University, Nanjing 210093, P. R. China.*

^b *Department of Applied Chemistry, College of Science, Nanjing Tech University, Nanjing 211816, P. R. China.*

**Corresponding author. Tel: (+86)-25-83686001; E-mail: whou@nju.edu.cn; E-mail: cj1908@126.com*

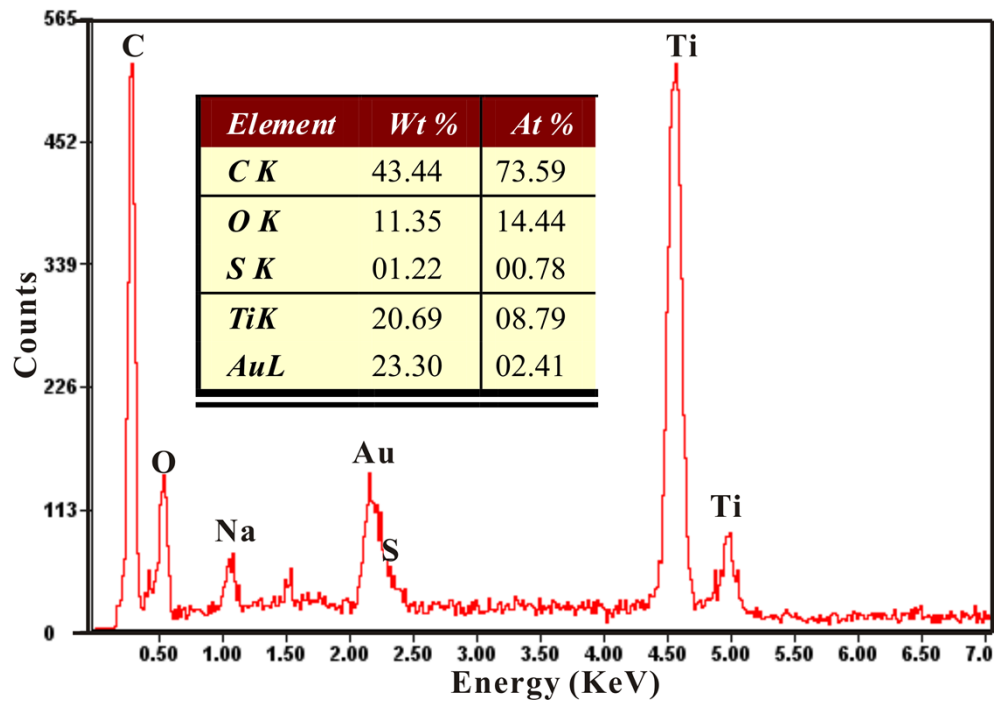


Fig. S1 The EDS result of S-TTO.

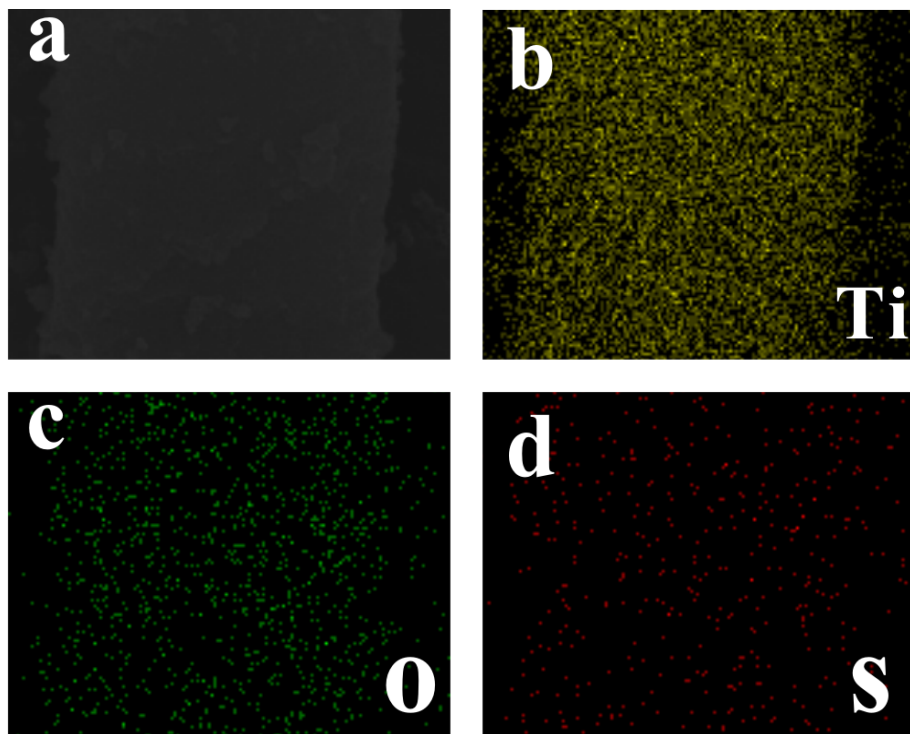


Fig. S2 EDS mapping of S-TTO.