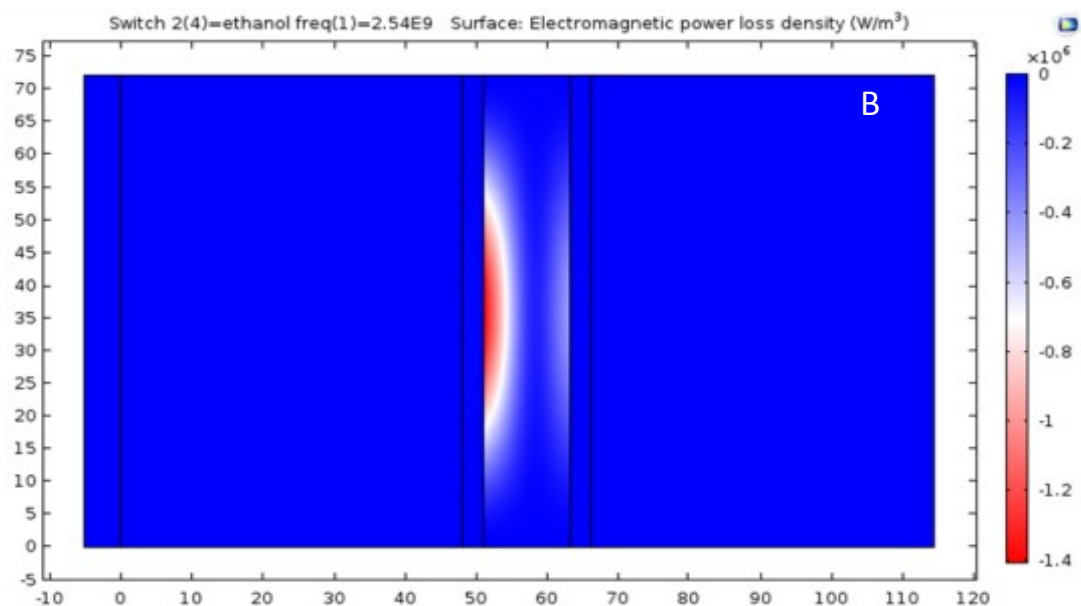
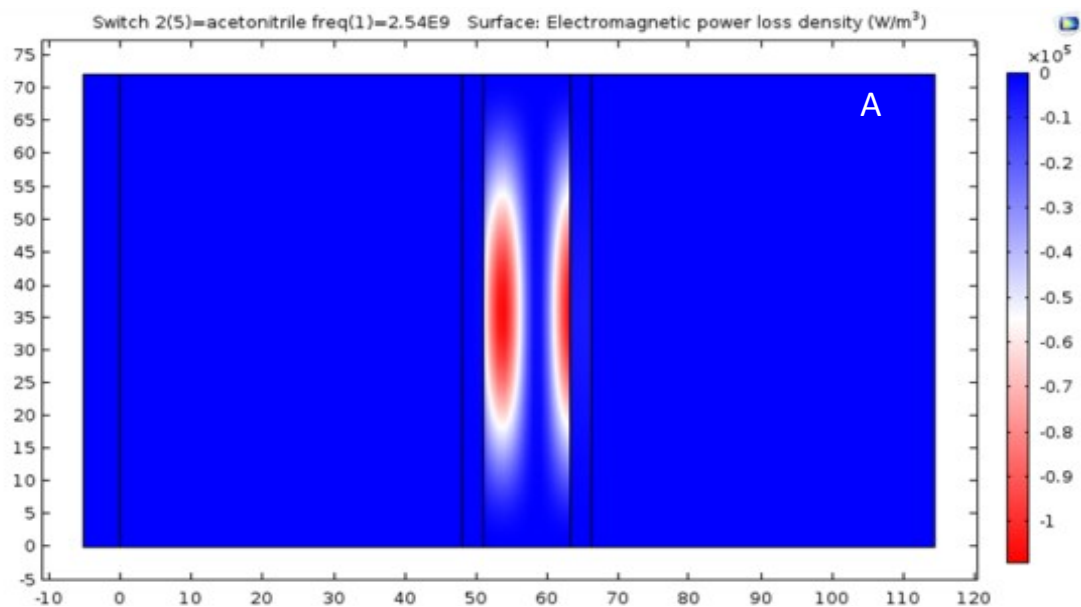
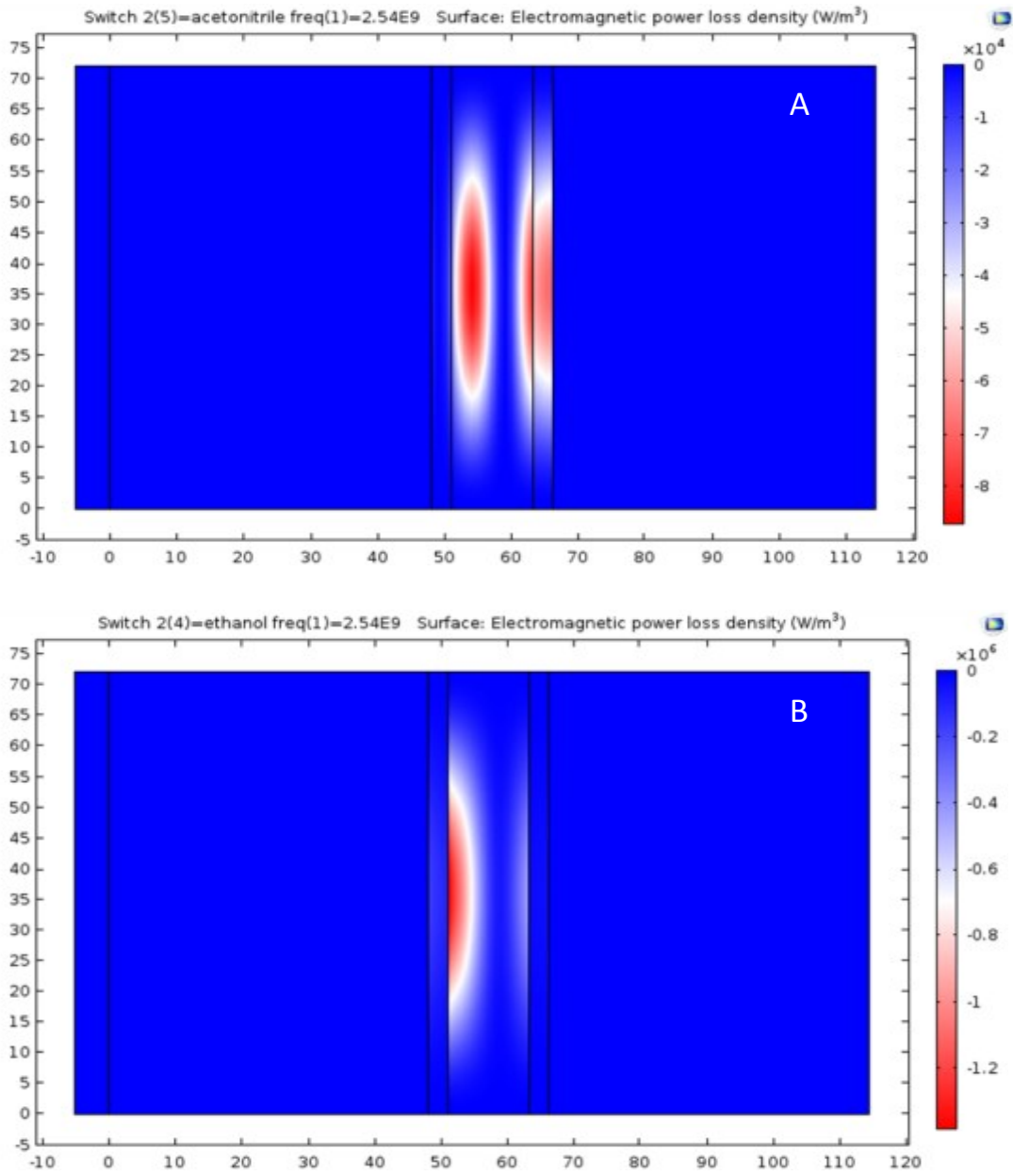


Supporting Information:

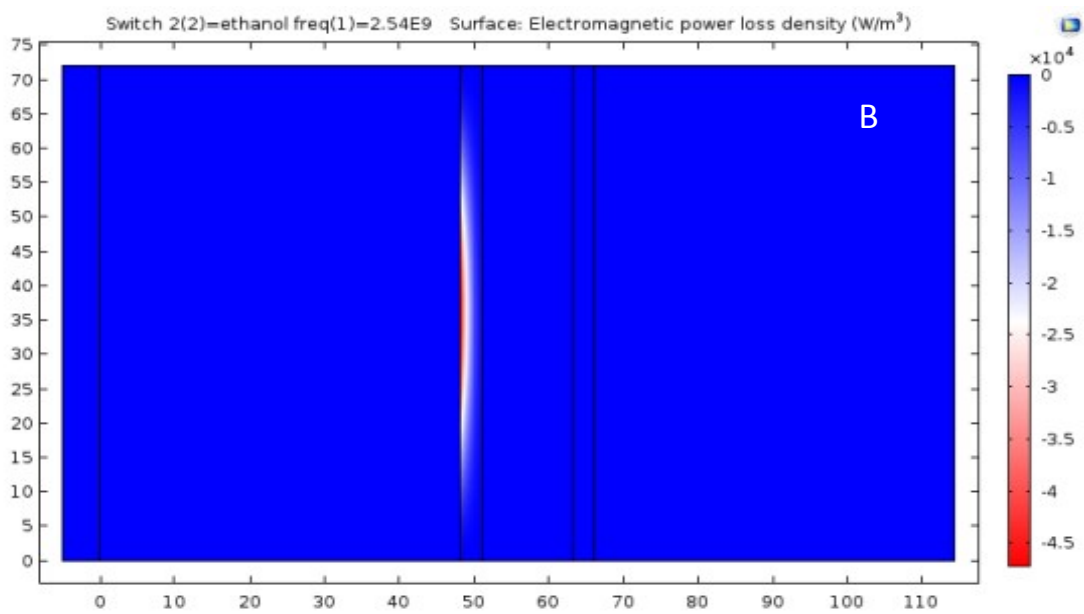
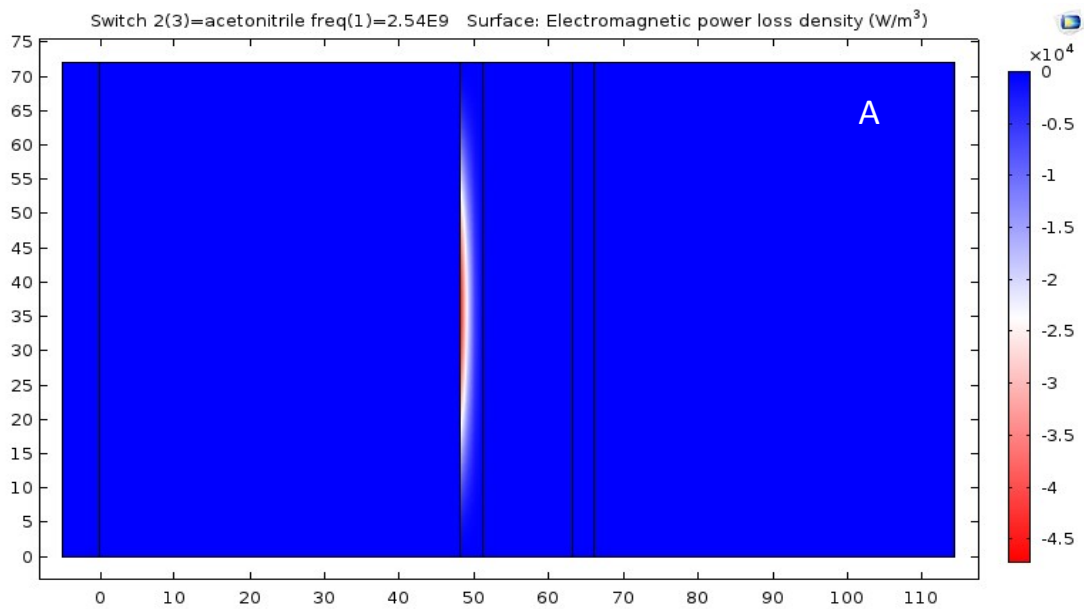
Supporting Figure 1: COMSOL model of EM power loss of A) acetonitrile and B) ethanol in borosilicate microwave vials.



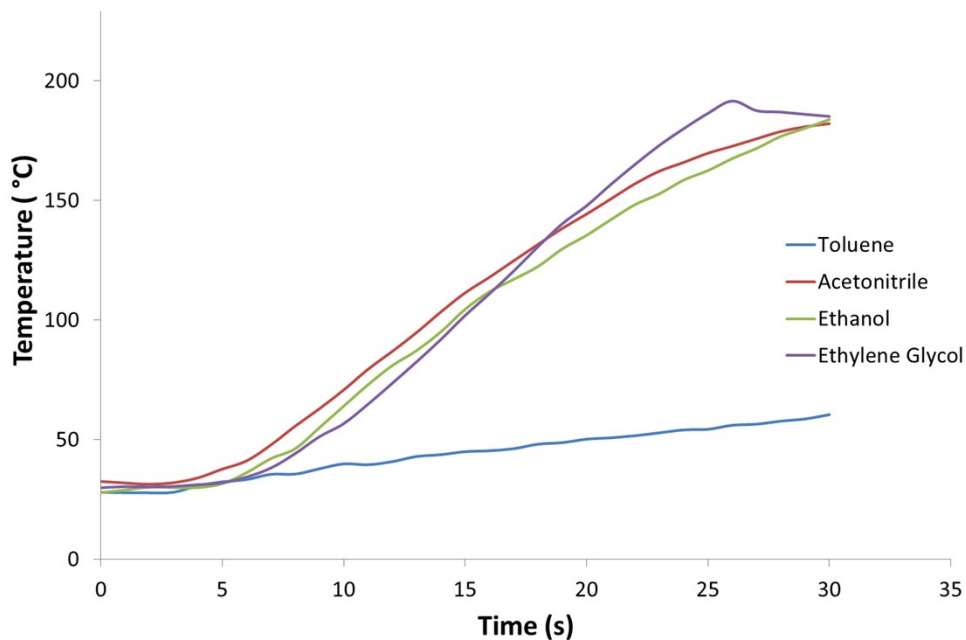
Supporting Figure 2: COMSOL model of EM power loss of A) acetonitrile and B) ethanol in silicon carbide microwave vials.



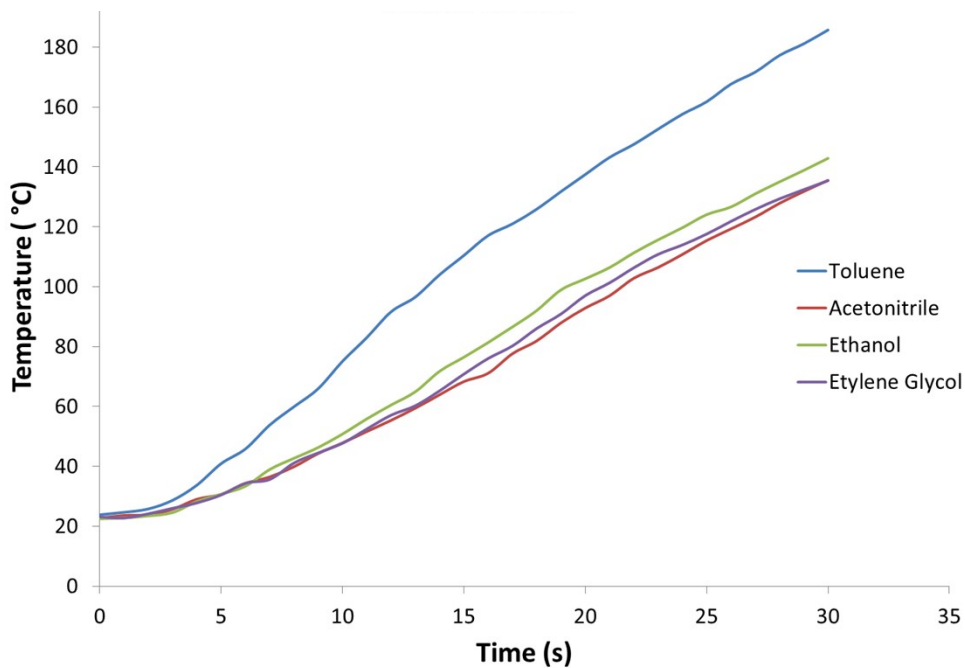
Supporting Figure 3: COMSOL model of EM power loss of A) acetonitrile and B) ethanol in gold-plated silicon carbide microwave vials.



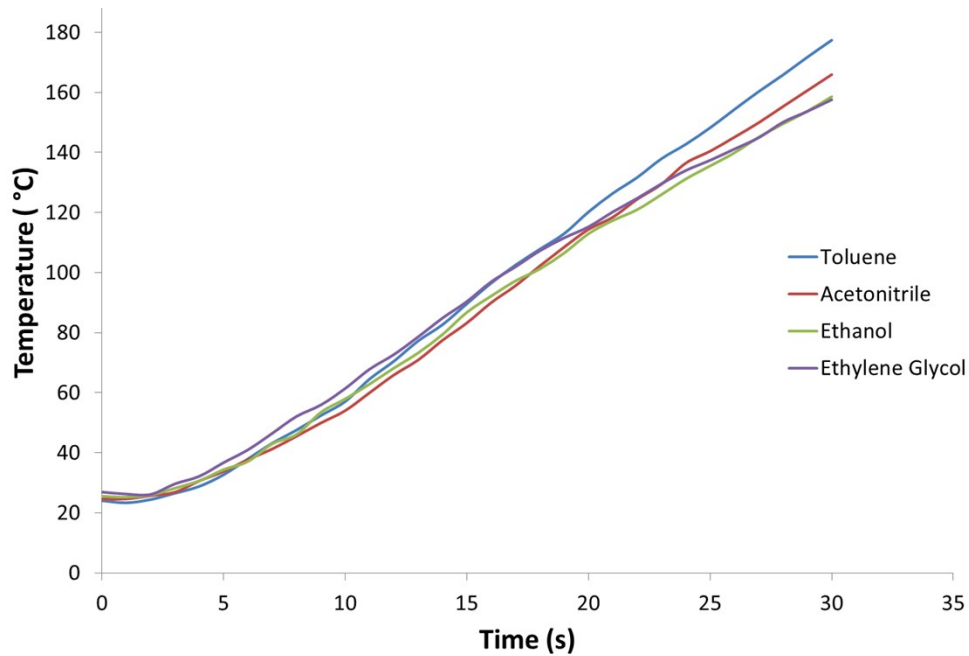
Supporting Figure 4: Heating curves from the IR thermometer (external) for four solvents in a borosilicate microwave vessel.



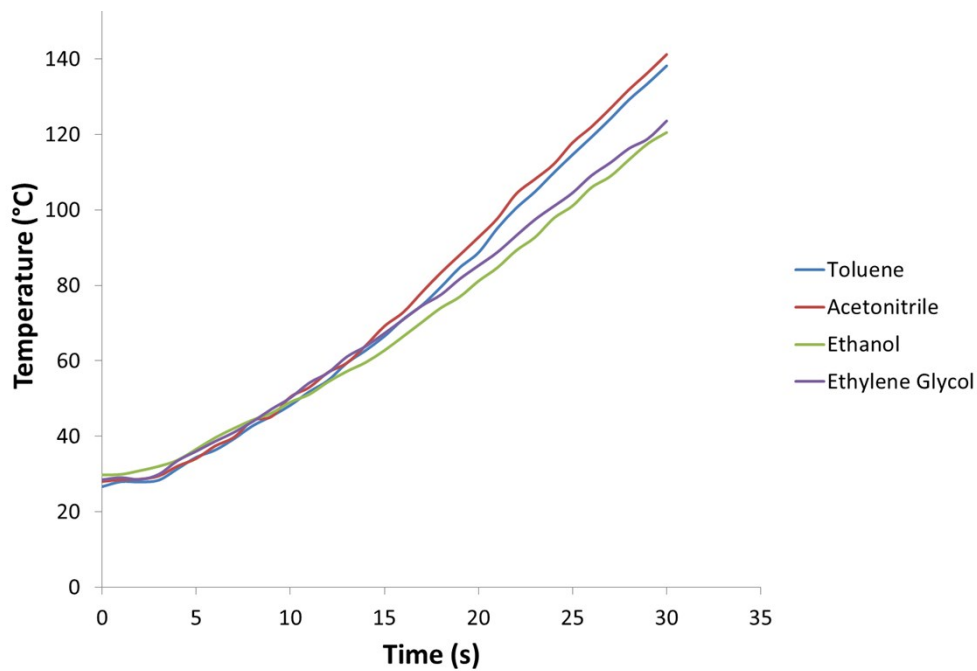
Supporting Figure 5: Heating curves from the IR thermometer (external) for four solvents in a silicon carbide microwave vessel.



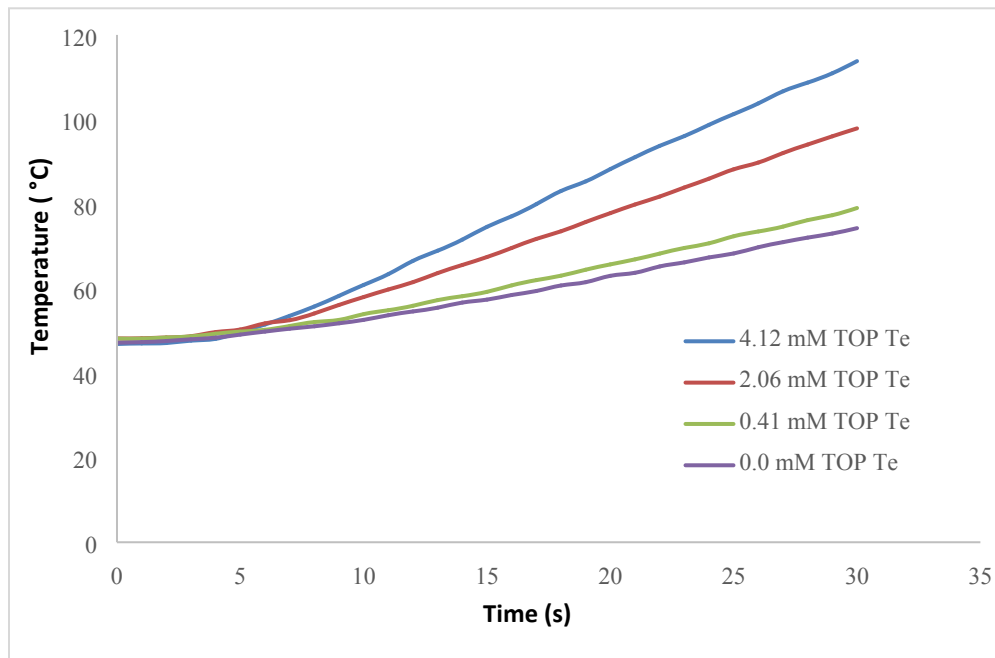
Supporting Figure 6: Heating curves from the IR thermometer (external) for four solvents in the silver-plated silicon carbide microwave vessel.



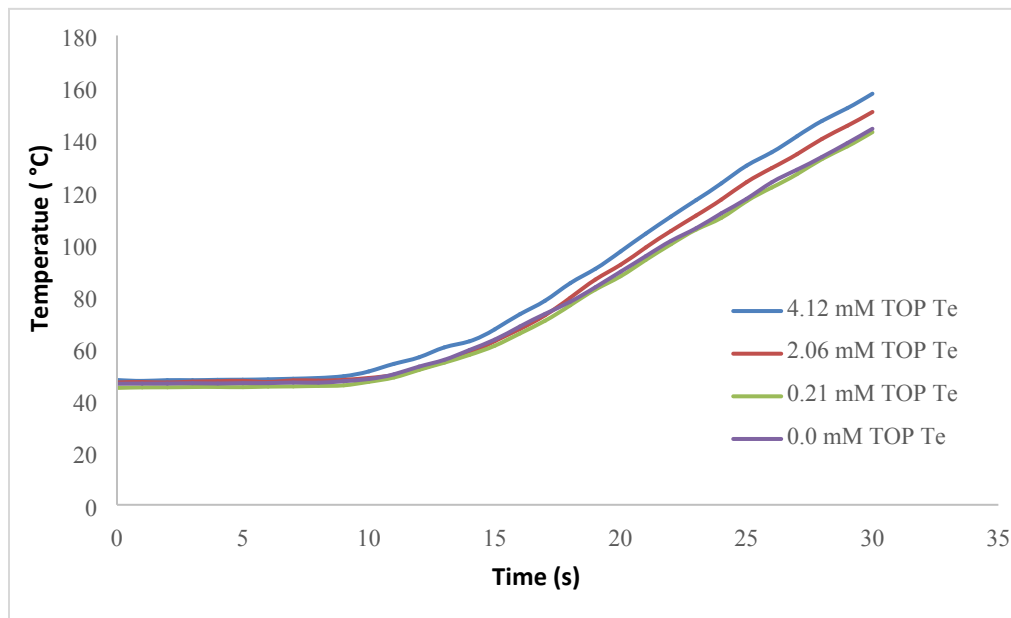
Supporting Figure 7: Heating curves from the IR thermometer (External) for four solvents in the gold-plated silicon carbide microwave vessel.



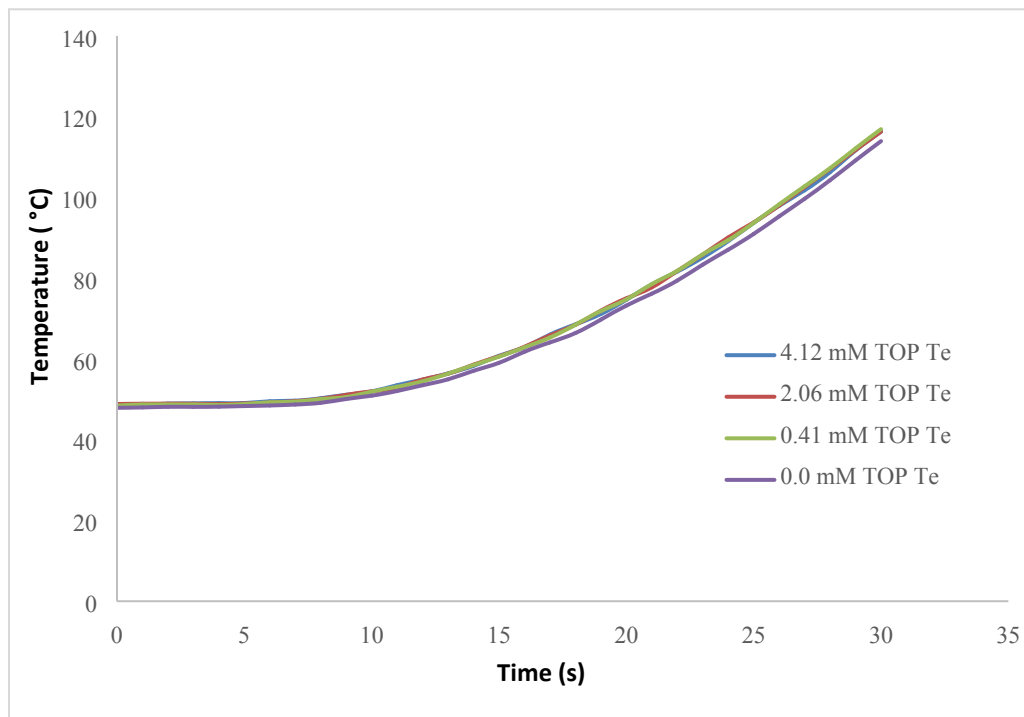
Supporting Figure 8: Heating curves for solutions of TOP-Te in toluene in a borosilicate microwave vessel.



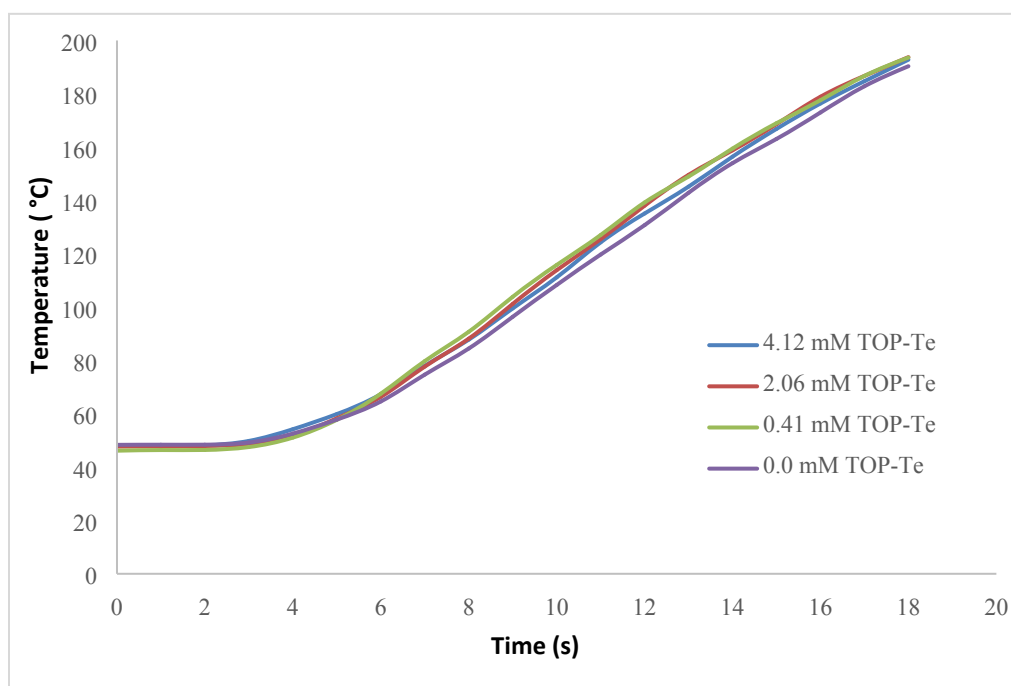
Supporting Figure 9: Heating curves for solutions of TOP-Te in toluene in a silicon carbide microwave vessel.



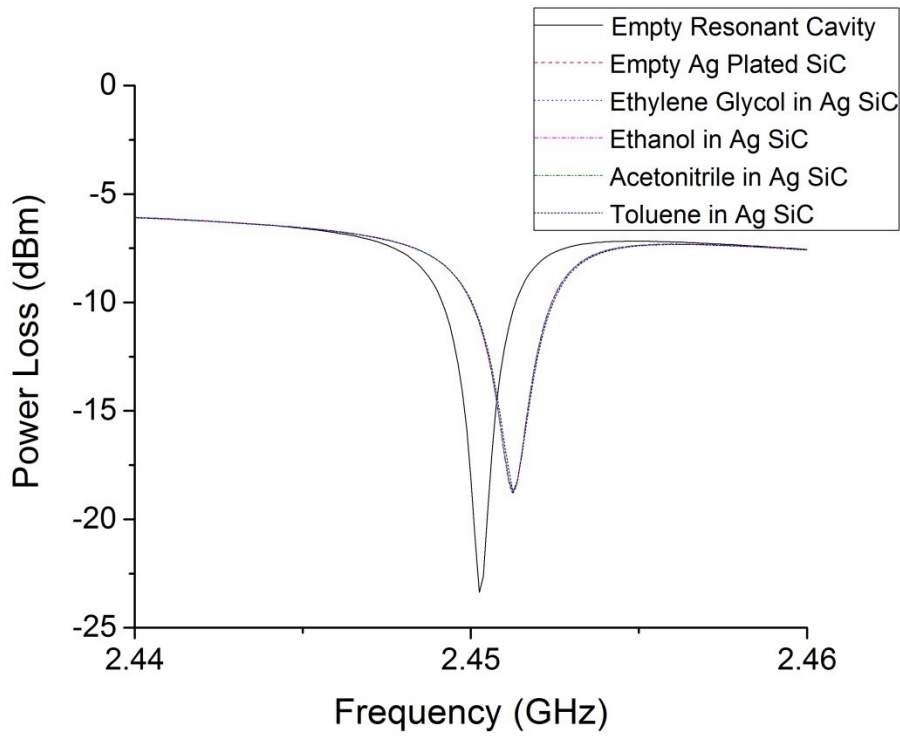
Supporting Figure 10: Heating curves for solutions of TOP-Te in toluene, heated in a gold-plated silicon carbide microwave vessel.



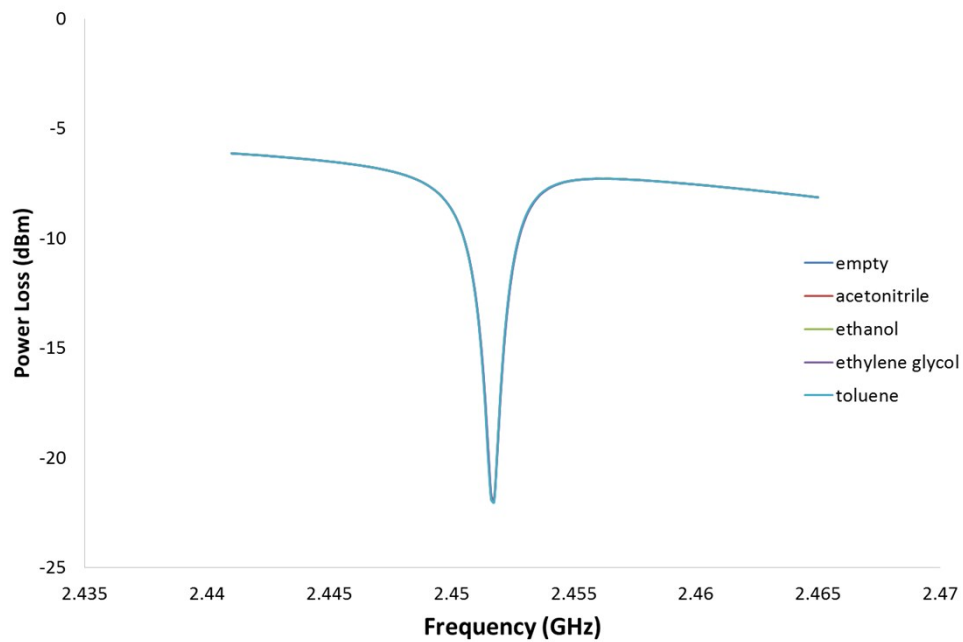
Supporting Figure 11: Heating curves for solutions of TOP-Te in ethylene glycol, heated in a borosilicate microwave vessel.



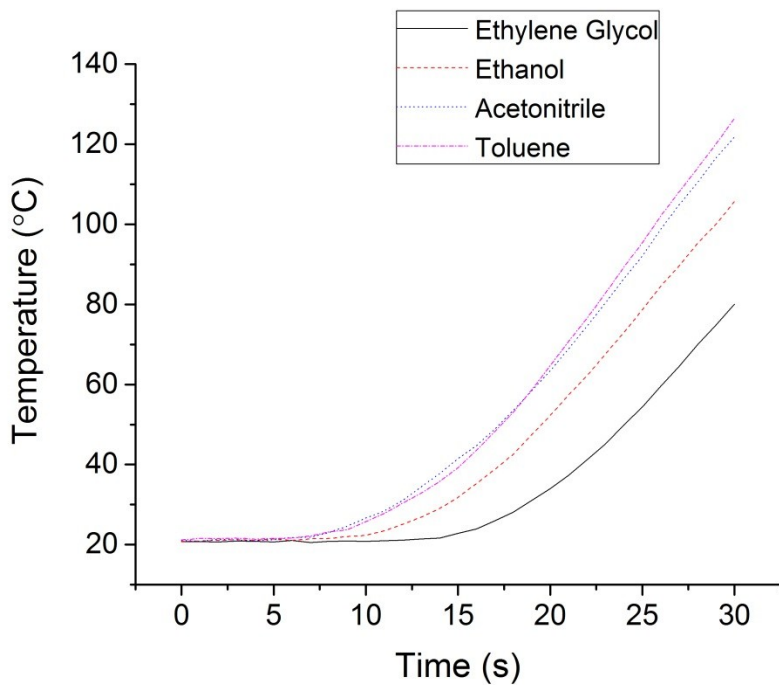
Supporting Figure 12: VNA data for the silver-plated silicon carbide vessel



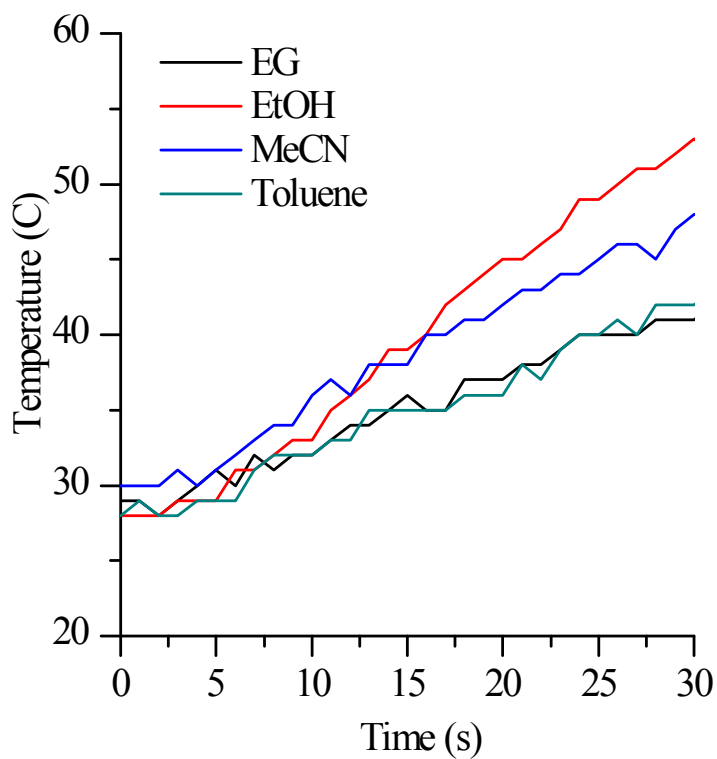
Supporting Figure 13: VNA data for the silver-plated borosilicate vessel



Supporting Figure 14: Heating curves (ruby thermometer) for the silver-plated silicon carbide tube



Supporting Figure 15: Heating Curves (IR) for the silver-plated borosilicate tube



Supporting Figure 16: Supporting Figure 16: Diagram of COMSOL setup; all dimensions are in millimeters. The red rectangle on the left side represents the MW source. The dotted line is a centerline for simulation purposes.

