

Supporting Information

Impact of Tellurium on the Structure and ^{77}Se NMR Spectra of Selenium-Rich Ternary Ge-Te-Se Glasses: a combined experimental and computational investigation

Lila Bouéssel du Bourg,^a Claire Roiland,^b Laurent le Pollès,^a Michaël Deschamps,^c
Catherine Boussard-Plédel,^b Bruno Bureau,^b Chris J. Pickard^d and Eric Furet^{*a}

^a Institut des Sciences Chimiques de Rennes - UMR6226 - ENSCR, 11 allée de Beaulieu, CS50837, 35708 Rennes Cedex 7, France

^b Institut des Sciences Chimiques de Rennes - UMR6226, 263 avenue du Général Leclerc, 35042 Rennes Cedex, France

^c CEMHTI, CNRS UPR 379, Orléans, France

^d Department of Physics and Astronomy, University College London, Gower Street, London WC1E 6BT, UK

Contents:

Figure S1. ^{77}Se ssNMR spectrum of $\text{Ge}_{20}\text{Se}_{20}\text{Te}_{60}$ acquired at 300MHz (7.1 T) using a 4 mm probe and MAS rotation conditions of 14kHz.

Figure S2. Histograms of the nature of the coordination numbers for the germanium atoms calculated on the 300K trajectories of our six Se-rich Ge-Te-Se models. First row, the three models ($\text{R}_{\text{Se}1-3}$) derived from the first heterogeneous GeSe_4 glass G_1 . Second row, the three models $\text{R}_{\text{Se}1'-3'}$ derived from the first heterogeneous GeSe_4 glass G_2 .

Figure S3. Individual radial distribution functions for our six Se-rich Ge-Te-Se glasses. The left column corresponds to the glasses derived from G_1 , and the right column from the G_2 GeSe_4 heterogeneous model.

Figure S4. Visualisation of two structures at 300K of our selenium-rich glasses derived from the G_1 (left) and G_2 (right) models together with tetrahedra for the Ge coordination spheres. (CS tetrahedra – grey, ES tetrahedra – orange). The germanium atoms are in red, the selenium atoms in yellow and the tellurium atoms in light blue.

Figure S5. Averaged Se-Te radial distribution functions (solid line) and their integrations (dotted line) for the three Ge-Te-Se glasses derived from G_1 (black) and the three other derived from G_2 (red).

Table S1. Coordination numbers for the germanium atoms calculated on the 300K trajectories of our six Se-rich Ge-Te-Se models. First row, the three models $\text{R}_{\text{Se}1-3}$ derived from the first heterogeneous GeSe_4 glass G_1 . Second row, the three models $\text{R}_{\text{Se}1'-3'}$ derived from the second glass G_2 .

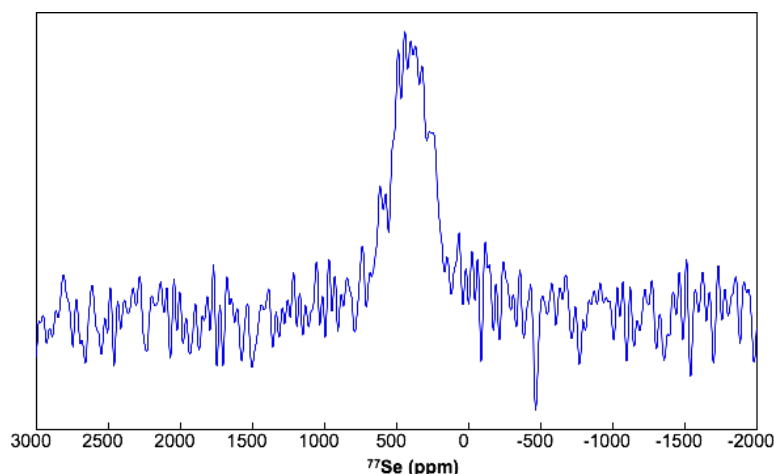


Figure S1. ^{77}Se ssNMR spectrum of $\text{Ge}_{20}\text{Se}_{20}\text{Te}_{60}$ acquired at 300MHz (7.1 T) using a 4 mm probe and MAS rotation conditions of 14kHz.

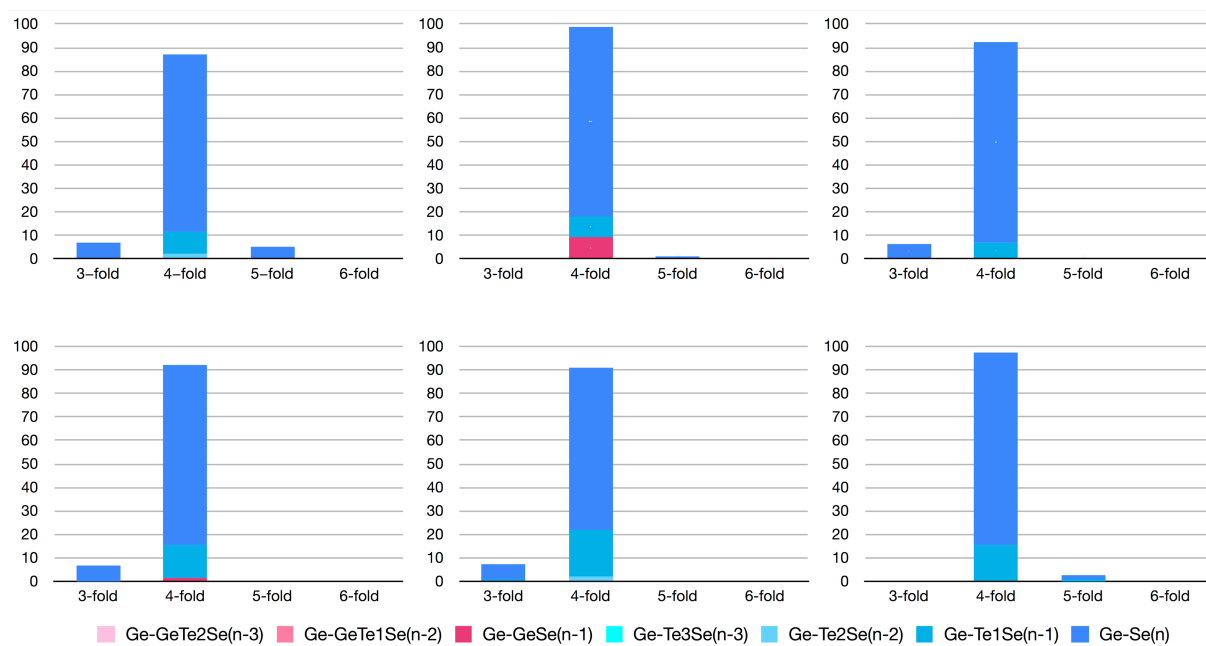


Figure S2. Histograms of the nature of the coordination numbers for the germanium atoms calculated on the 300K trajectories of our six Se-rich Ge-Te-Se models. First row, the three models ($R_{\text{Se}1-3}$) derived from the first heterogeneous GeSe_4 glass G_1 . Second row, the three models $R_{\text{Se}1'-3'}$ derived from the first heterogeneous GeSe_4 glass G_2 .

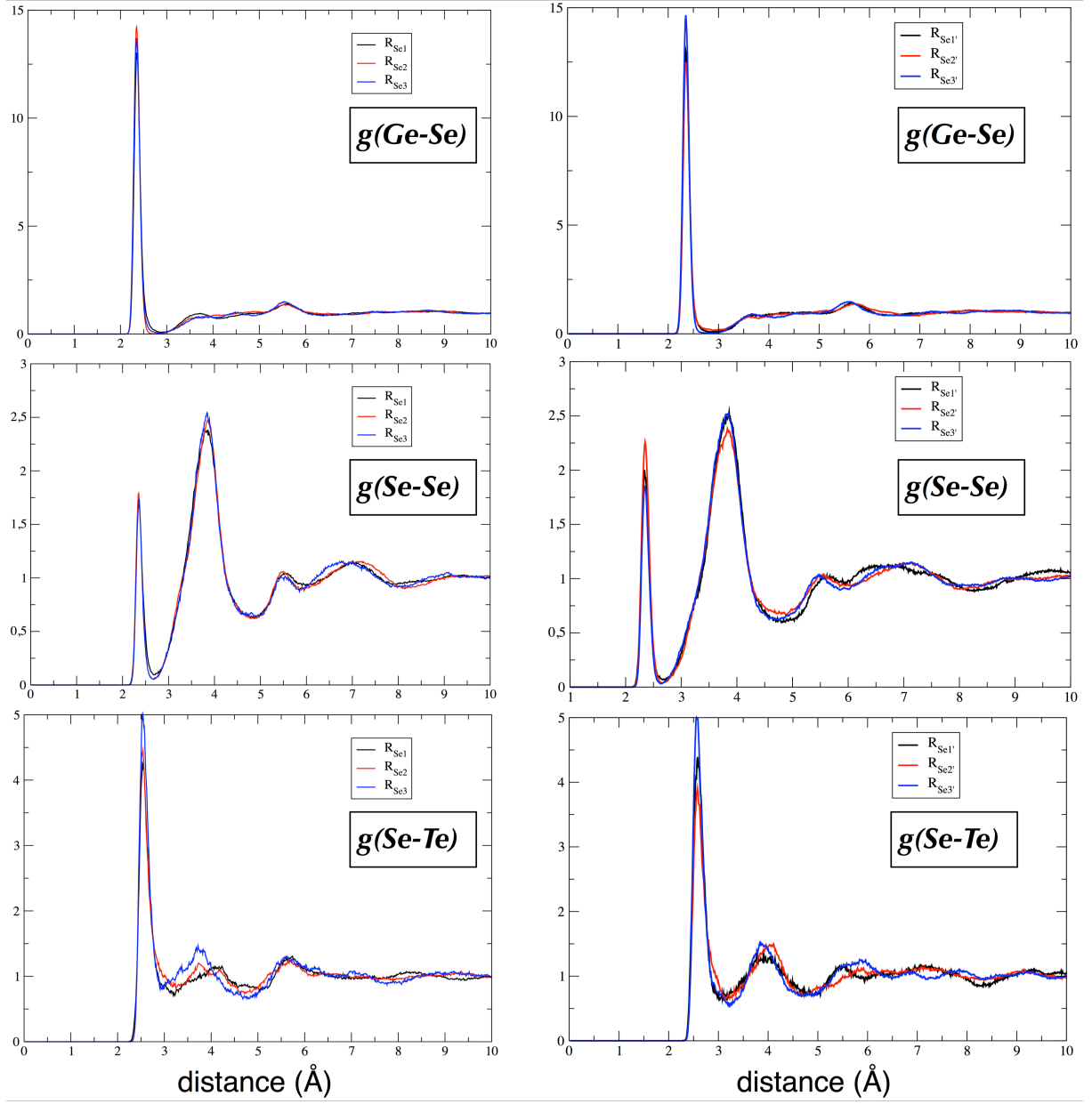


Figure S3. Individual radial distribution functions for our six Se-rich Ge-Te-Se glasses. The left column corresponds to the glasses derived from G_I , and the right column from the G_2 GeSe_4 heterogeneous model.

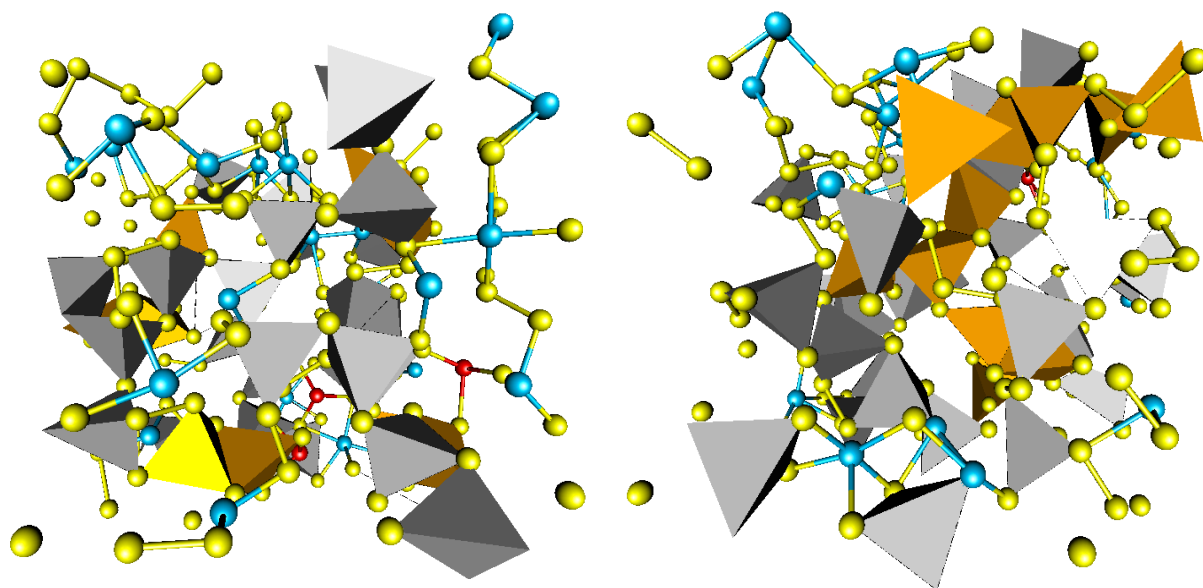


Figure S4. Visualisation of two structures at 300K of our selenium-rich glasses derived from the G_1 (left) and G_2 (right) models together with tetrahedra for the Ge coordination spheres. (CS tetrahedra – grey, ES tetrahedra – orange). The germanium atoms are in red, the selenium atoms in yellow and the tellurium atoms in light blue.

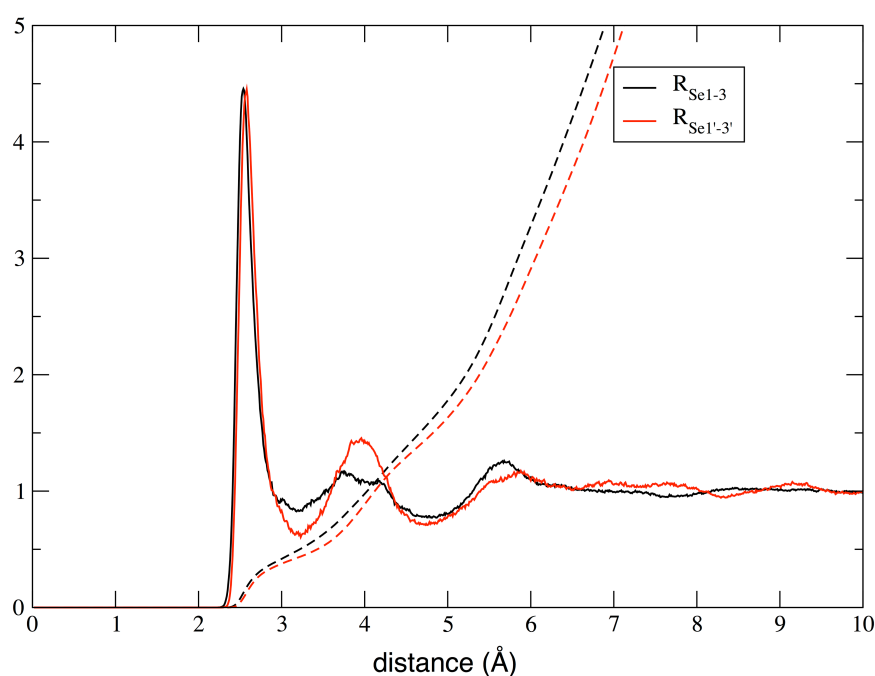


Figure S5. Averaged Se-Te radial distribution functions (solid line) and their integrations (dotted line) for the three Ge-Te-Se glasses derived from G_1 (black) and the three other derived from G_2 (red).

Table S1. Coordination numbers for the germanium atoms calculated on the 300K trajectories of our six Se-rich Ge-Te-Se models. First row, the three models $R_{\text{Se}1-3}$ derived from the first heterogeneous GeSe_4 glass G_1 . Second row, the three models $R_{\text{Se}1'-3'}$ derived from the second glass G_2 .

	n=3	n=4	n=5			n=3	n=4	n=5			n=3	n=4	n=5	
Ge-GeSe(n-1)							9,23		9,23					
Ge-Te2Se(n-2)		2,26		2,26										
Ge-TeSe(n-1)		9,28		9,28			8,90	0,43	9,33			6,80		6,80
Ge-Se(n)	6,83	75,69	5,46	87,98			80,91	0,46	81,37		6,51	85,79	0,37	92,67
Sum	6,83	87,23	5,46	99,52		0	99,04	0,89	99,93		6,51	92,59	0,37	99,47

	n=3	n=4	n=5			n=3	n=4	n=5			n=3	n=4	n=5	
Ge-GeSe(n-1)		1,53		1,53										
Ge-Te2Se(n-2)							2,33		2,33					
Ge-TeSe(n-1)	0,02	13,87	0,11	14,00		0,83	19,65	0,56	21,04			15,38	0,92	16,3
Ge-Se(n)	6,89	76,52	0,35	83,76		6,48	68,97	0,22	75,67			81,88	1,81	83,69
Sum	6,91	91,92	0,46	99,29		7,31	90,95	0,78	99,04		0	97,26	2,73	99,99