

SUPPORTING INFORMATION

The Effect of Fluorophore Incorporation Method on Fluorescence Enhancement in Colloidal Photonic Crystals

Ehsan Eftekhari*, Ivan S. Cole** and Qin Li*

*Queensland Micro- and Nanotechnology Centre, and Environmental Engineering, Griffith
University, Nathan Campus, QLD 4111, Australia, qin.li@griffith.edu.au

**CSIRO Materials Science and Engineering, Clayton, VIC 3168, Australia

Email addresses: Ehsan Eftekhari: ehsan.eftekhari@griffithuni.edu.au; Ivan S. Cole:

Ivan.Cole@csiro.au;

*Corresponding Author: qin.li@griffith.edu.au

Address: Queensland Micro- and Nanotechnology Centre & School of Engineering, Griffith
University, Nathan, QLD 4111, Australia

Telephone: (61)(07)37357514

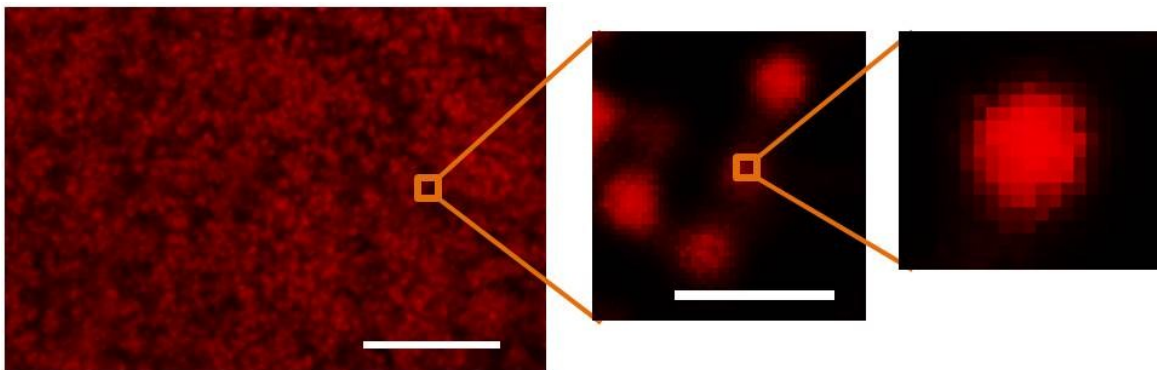


Figure S2. Confocal microscope image of RhB@large spheres. The scale bars in the left and middle images are 10 μm and 1 μm , respectively.

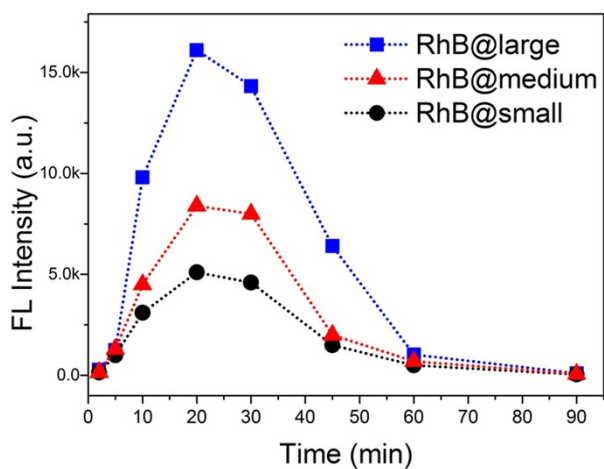


Figure S2. The effect of DMF treatment time on fluorescence intensities of RhB@small, RhB@medium and RhB@large

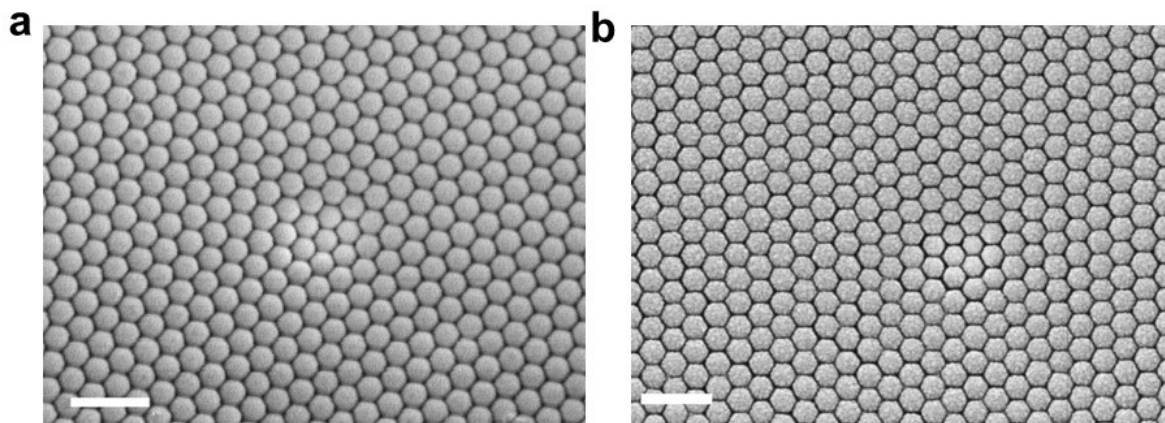


Figure S3. (a) Top view SEM images of: RhB@small film. (b) Top view SEM images of RhB@medium film. Scale bar is 1 μm

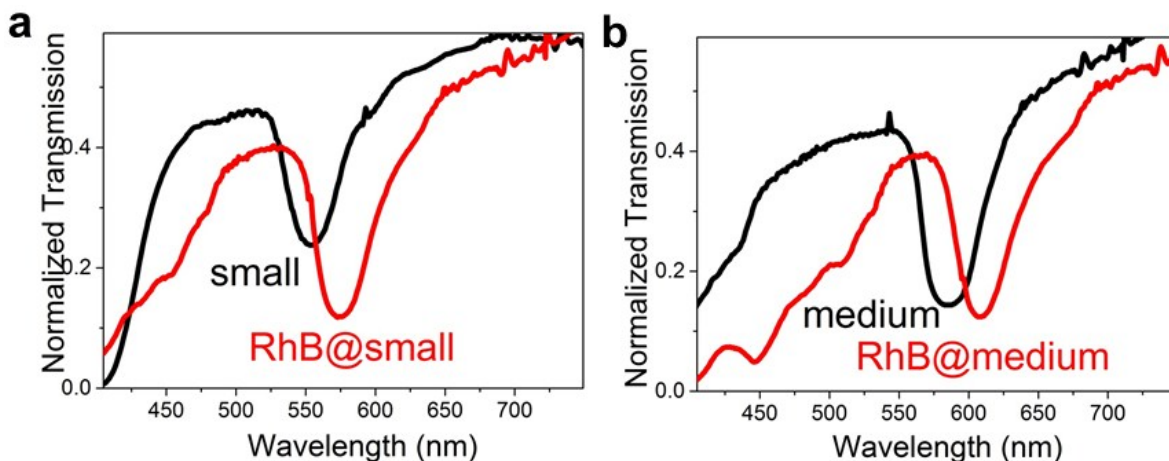


Figure S4. (a) Normalised UV-vis transmission of small PS spheres film (black) and after immobilisation of with RhB, RhB@small film (red). (b) Normalised UV-vis transmission of medium PS spheres film (black) and after immobilisation of with RhB, RhB@medium film (red).

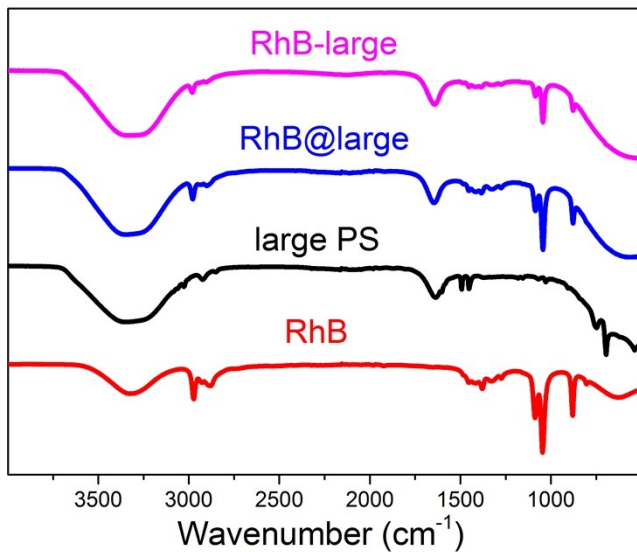


Figure S5. FTIR spectra of RhB, large PS, RhB@large and RhB-large suspensions.