

Supporting Information

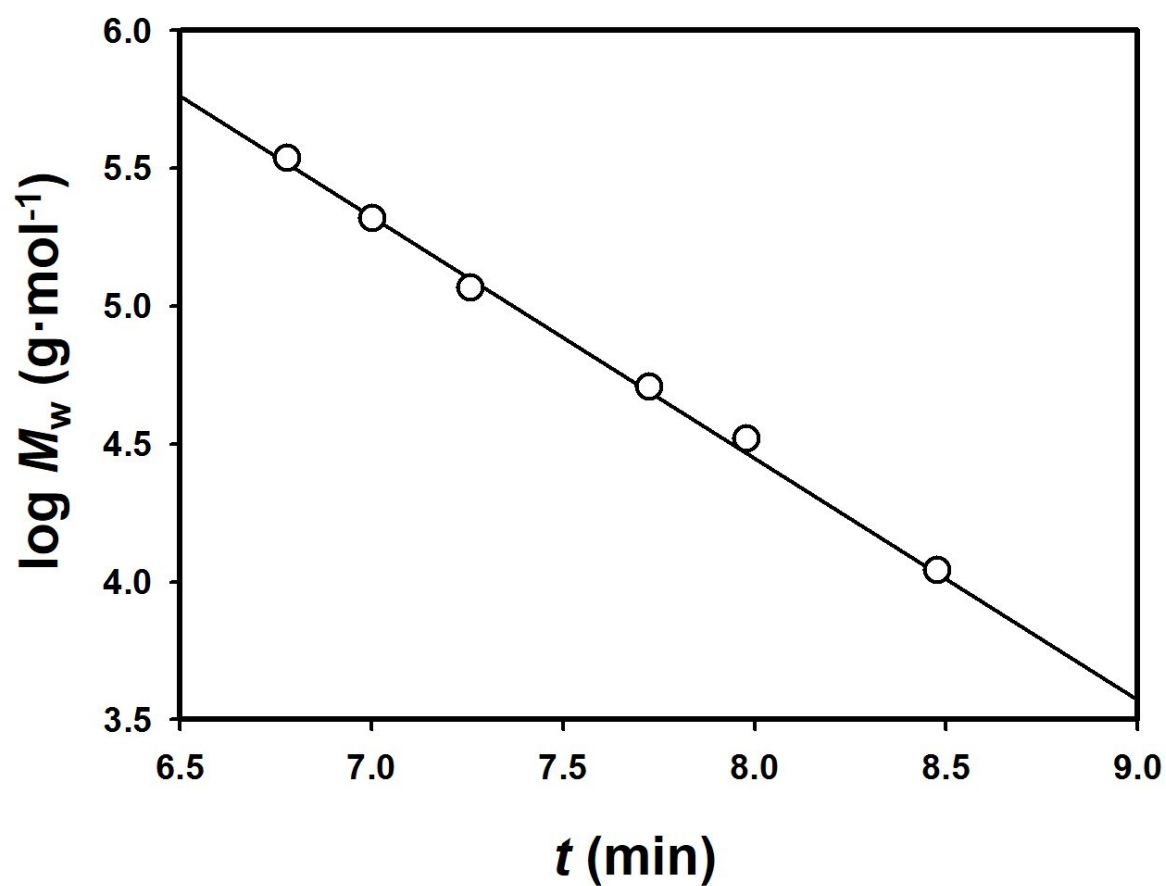


Figure S1. Dependence of molar mass on retention time for standard polysaccharide/DMAC/LiCl solutions

**Table S1.** Composition analysis of cellulose hydrolyzed by BmimCl<sup>a</sup>

Dissolution time (h)	Cellulose (%)	Hemicellulose (%)	Lignin (%) <sup>b</sup>
0	95 ± 3	2 ± 2	-
24	96 ± 2	2 ± 1	-
48	96 ± 3	1 ± 1	-
72	96 ± 2	2 ± 1	-
96	97 ± 3	1 ± 3	-
120	96 ± 3	2 ± 2	-
144	95 ± 1	1 ± 1	-
168	96 ± 1	1 ± 2	-
192	97 ± 2	1 ± 2	-
216	97 ± 1	-	-
240	97 ± 2	-	-

<sup>a</sup>All measurements are an average of triplicate samples.

<sup>b</sup>Lignin was not detected in all samples.