

Role of Naphthalene during the Induction Period of Methanol Conversion on HZSM-5 Zeolite

*Liang Qi^{ab}, Jinzhe Li^a, Yingxu Wei^a, Lei Xu^{*a} and Zhongmin Liu^{*a}*

^a National Engineering Laboratory for Methanol to Olefins, Dalian National Laboratory for Clean Energy, iChEM (Collaborative Innovation Center of Chemistry for Energy Materials), Dalian Institute of Chemical Physics, Chinese Academy of Sciences, Dalian 116023, People's Republic of China;

^b University of Chinese Academy of Sciences, Beijing 100049, P. R. China;

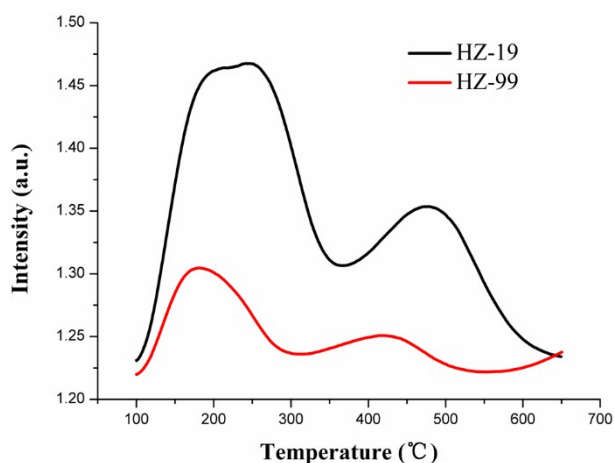


Figure S1. TPD profiles of ammonia for HZ-19 and 99 catalyst

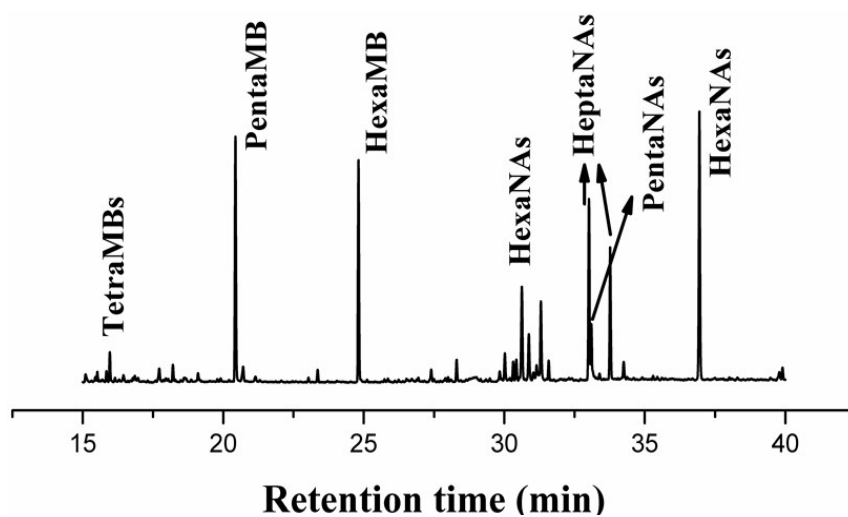


Figure S2. GC-MS analysis of retained material in catalyst after co-feeding methanol with 1 wt. % naphthalene for 40 min at 250 °C.