

ESI to accompany:

[Cu(N[^]N)(P[^]P)]⁺ complexes with 2,2':6',2''-terpyridine ligands as the N[^]N domain

Niamh S. Murray,^a Sarah Keller,^a Edwin C. Constable,^a Catherine E. Housecroft,^{*a} Markus Neuburger^a and Alessandro Prescimone^a

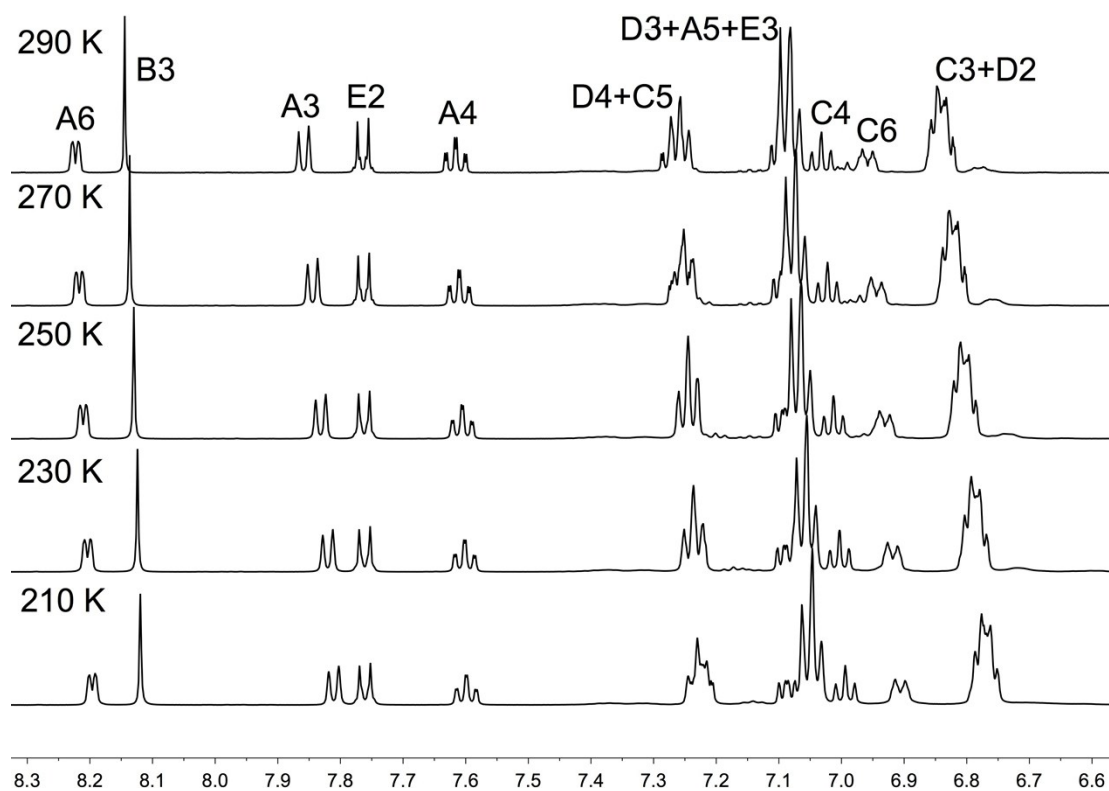


Fig. S1. Variable temperature 500 MHz ¹H NMR spectra of [Cu(**4**)(POP)][PF₆] (in CD₂Cl₂; aromatic region only). Chemical shifts in δ / ppm.

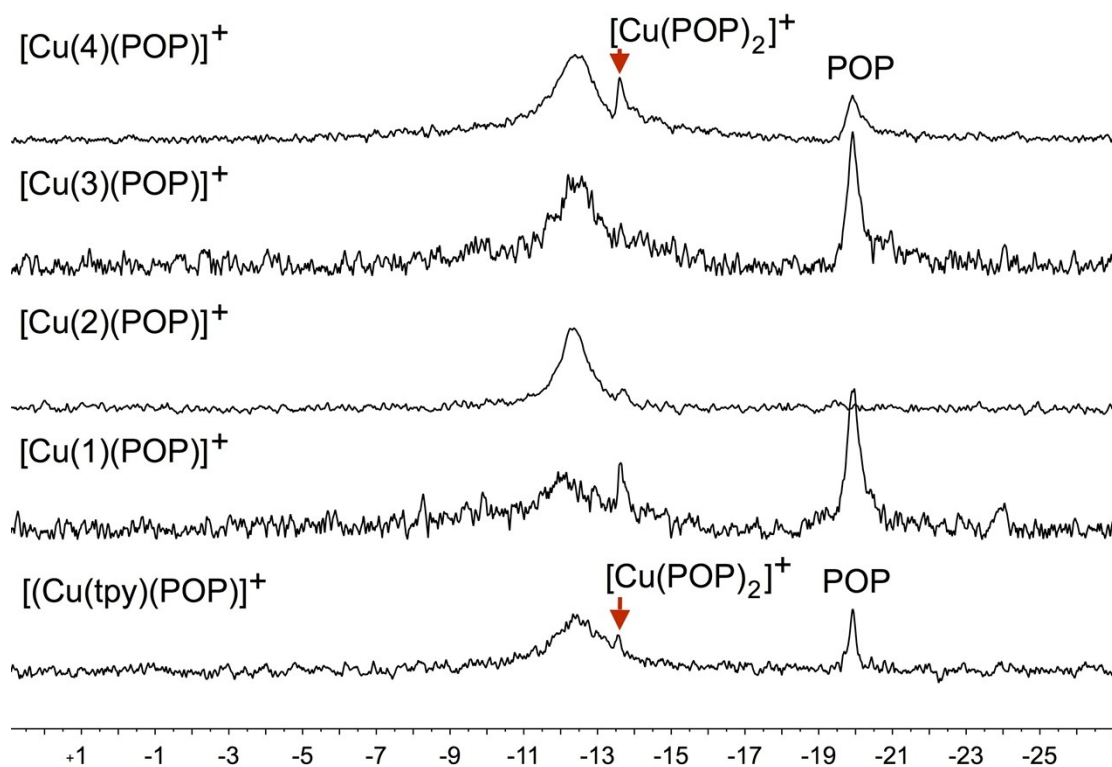


Fig. S2. ^{31}P NMR spectra of aged samples of $[\text{Cu}(\text{N}^{\wedge}\text{N})(\text{POP})][\text{PF}_6]$ ($\text{N}^{\wedge}\text{N} = \text{tpy}, \mathbf{1}-\mathbf{4}$) in CD_2Cl_2 , or CDCl_3 for $[\text{Cu}(\mathbf{2})(\text{POP})][\text{PF}_6]$. Each spectrum also shows a septet for the $[\text{PF}_6]^-$ ion at $\delta -144.5$ ppm. Scale in δ / ppm.