

Supporting Information for Dalton Transactions

SUPPORTING INFORMATION

Sulfur-free iridium(III) complex for highly selective and multi-signaling mercury(II)-chemosensor

Hong-Tao Cao^{a, b}, Lei Ding^a, Guo-Gang Shan^{a*}, Hai-Zhu Sun^{a*}, Yong Wu^a, Zhong-Min Su^{a*}

^aInstitute of Functional Material Chemistry, faculty of chemistry, Northeast Normal University, Changchun, 130024 Jilin, P. R. China

^bCenter for Molecular Systems and Organic Devices (CMSOD) Key Laboratory for Organic Electronics & Information Displays (KLOEID), Institute of Advanced Materials (IAM) Nanjing University of Posts & Telecommunications, Nanjing 210046, P. R. China

Correspondence to:

Dr. Guo-Gang Shan; Tel: +86-431-85099667, E-mail: shangg187@nenu.edu.cn

Associate Prof. Dr. Hai-Zhu Sun; Tel: +86-431-85099667, Fax: +86-431-85099667,

E-mail: sunhz335@nenu.edu.cn

Prof. Dr. Zhong-Min Su; Tel: +86-431-85099667, Fax: +86-431-85684009, E-mail:

zmsu@nenu.edu.cn

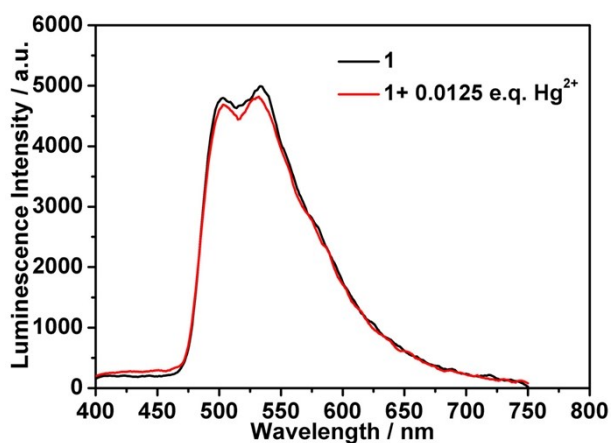


Fig. S1. Changes in the PL spectra of complex **1** (20 μM) in CH_3CN upon titration of 0.0 and 0.0125 e.q. $\text{Hg}(\text{II})$ ions.

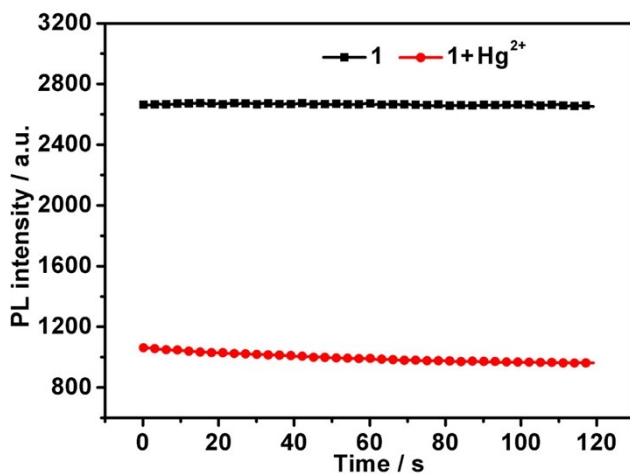


Fig. S2. PL intensity at 502 nm of complex **1** (20 μM) in CH_3CN solution before and after addition of $\text{Hg}(\text{II})$ ions within 2 minutes.

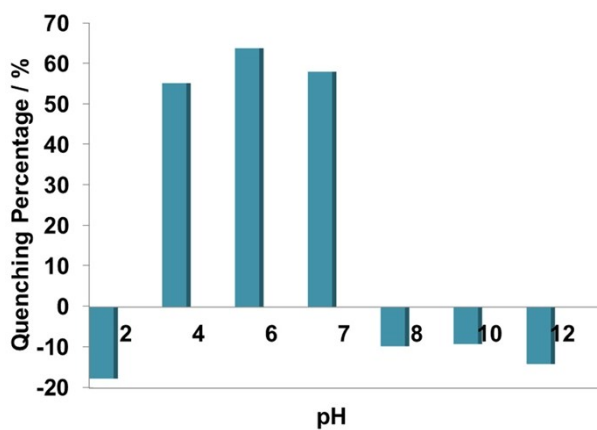
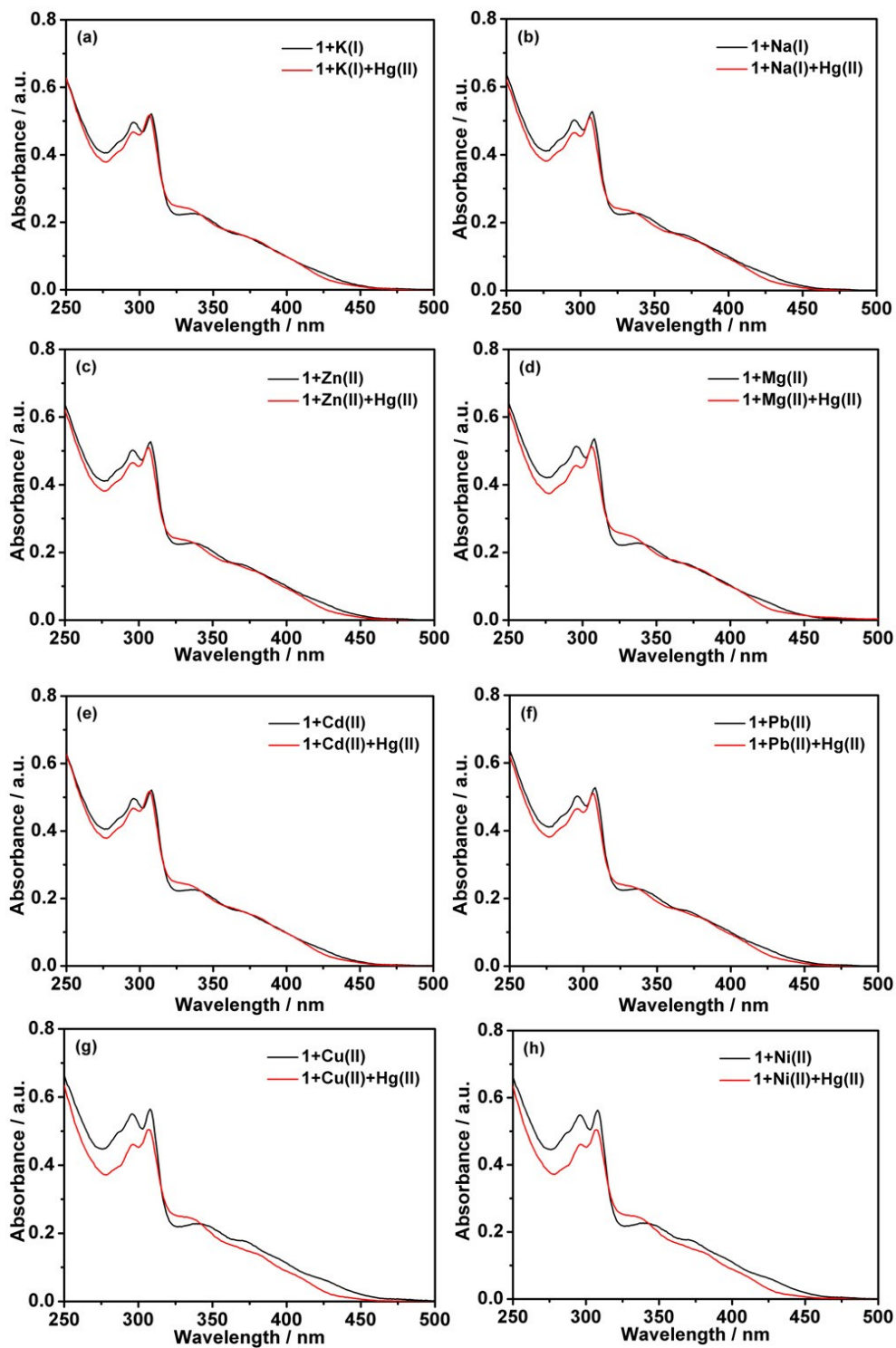


Fig. S3. The effect of pH on emission quenching of complex **1** upon addition of $\text{Hg}(\text{II})$ ions.

Supporting Information for Dalton Transactions



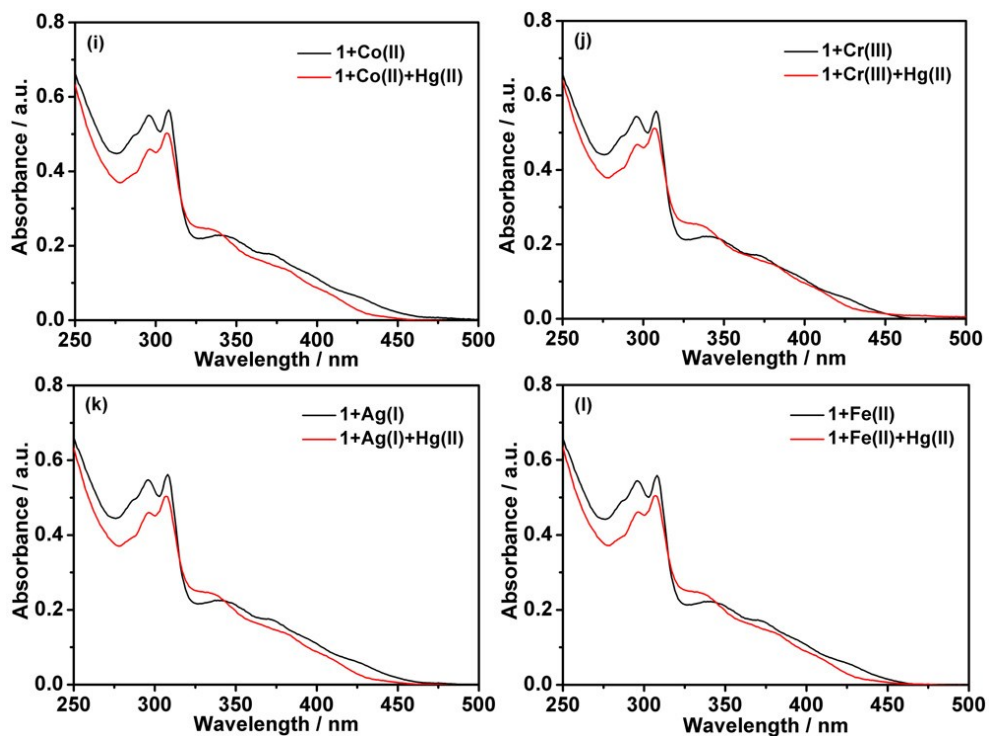
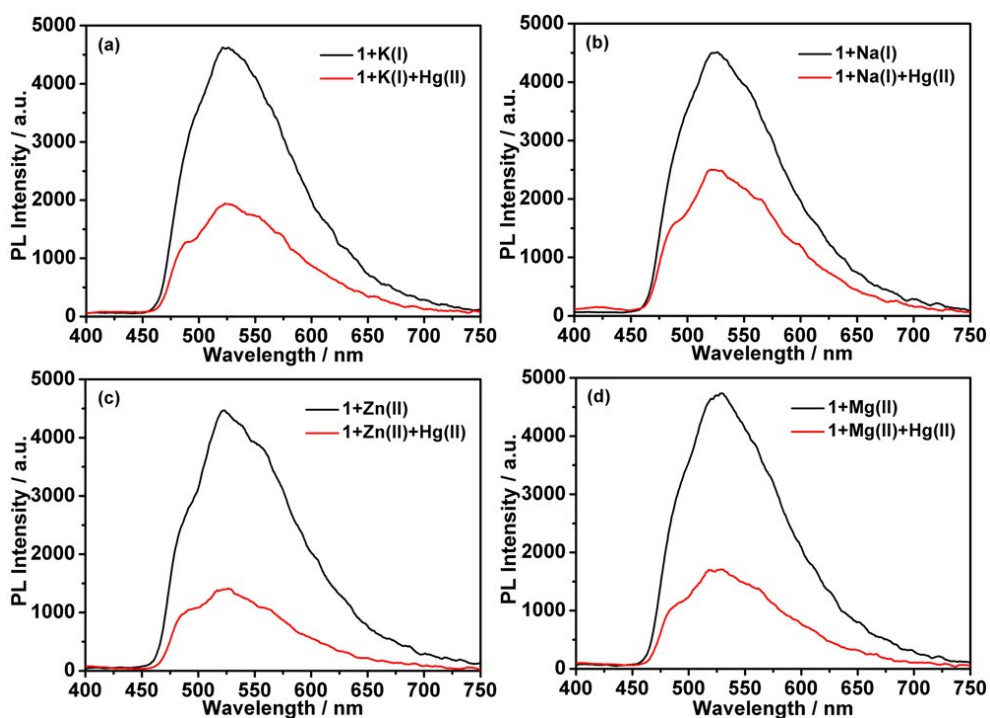


Fig. S4. The UV-vis absorption spectra of complex **1** (20 μ M) in CH_3CN with 1 e.q. of various metal cations and addition of 1 e.q. Hg(II) ions into above solutions.



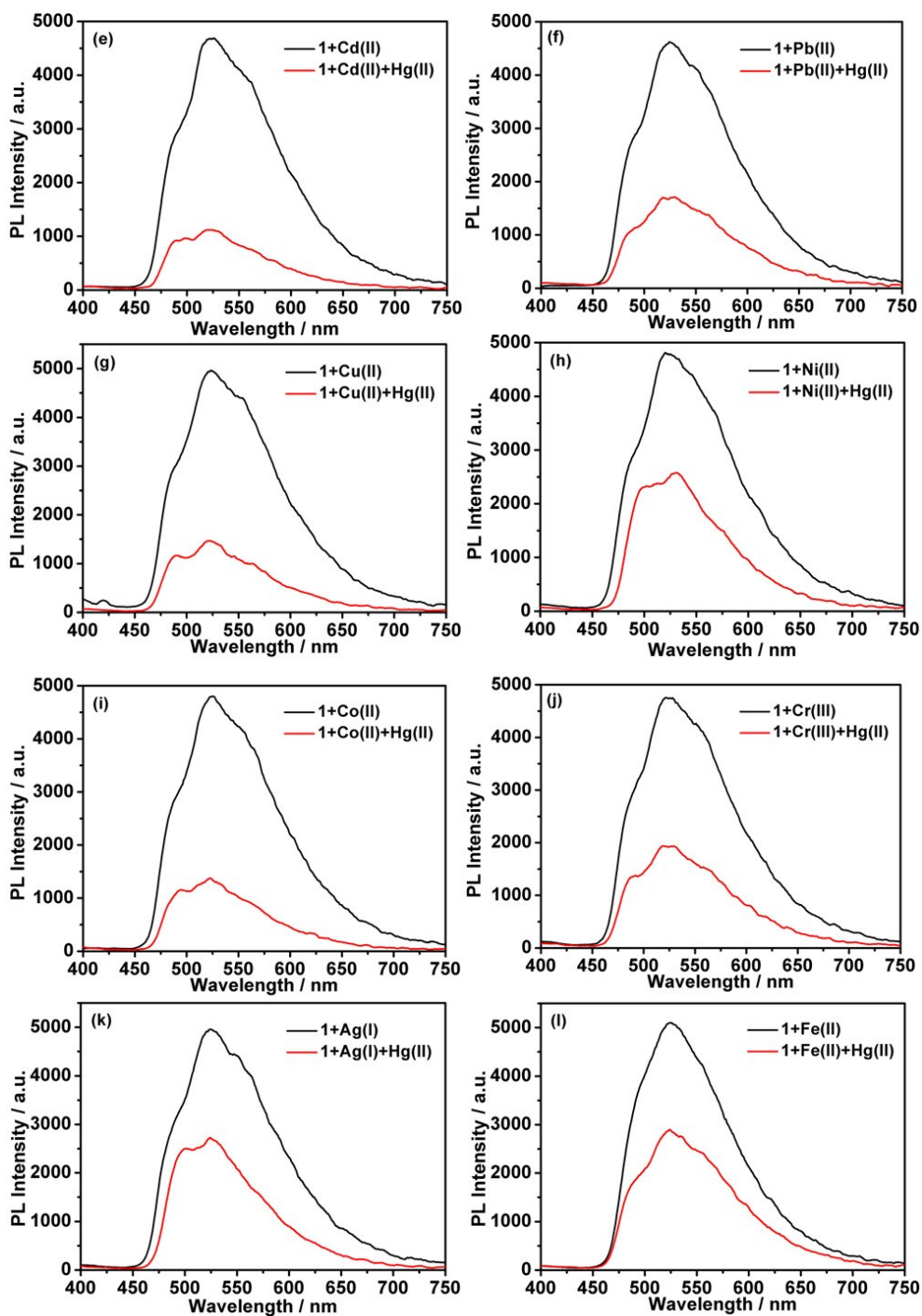


Fig. S5. The PL spectra of complex **1** (20 μM) in CH_3CN with 1 e.q. of various metal cations and addition of 1 e.q. Hg(II) ions into above solutions.

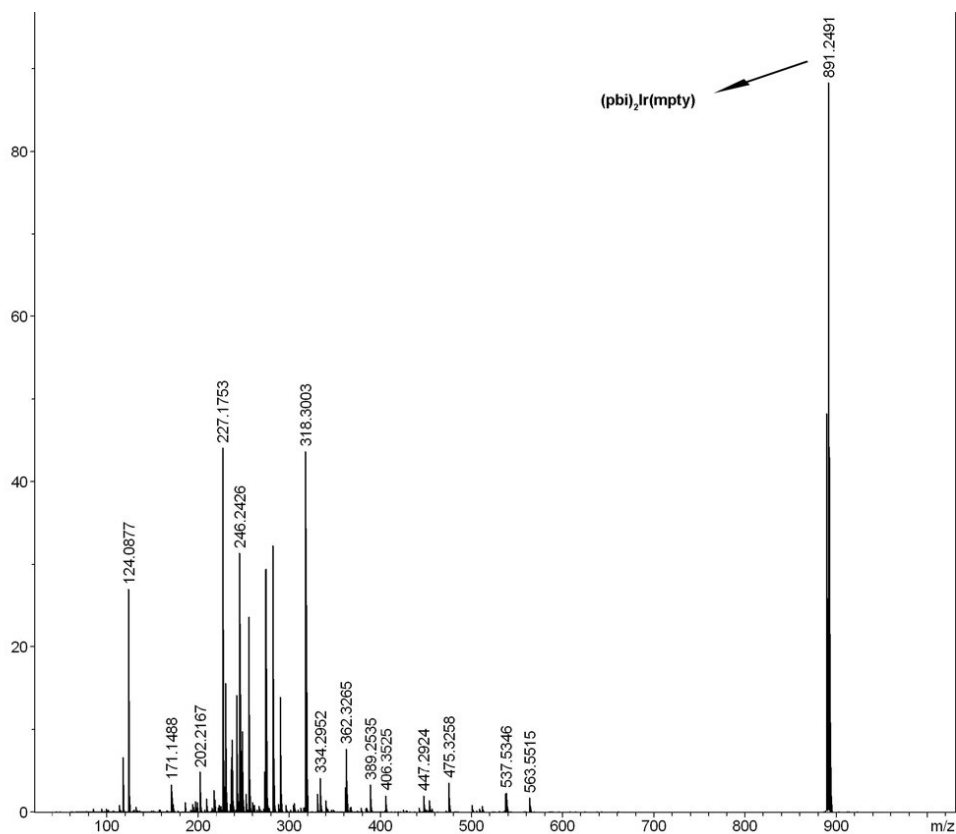


Fig. S6. ESI-MS spectrum of complex 1 in CH₃CN solution.

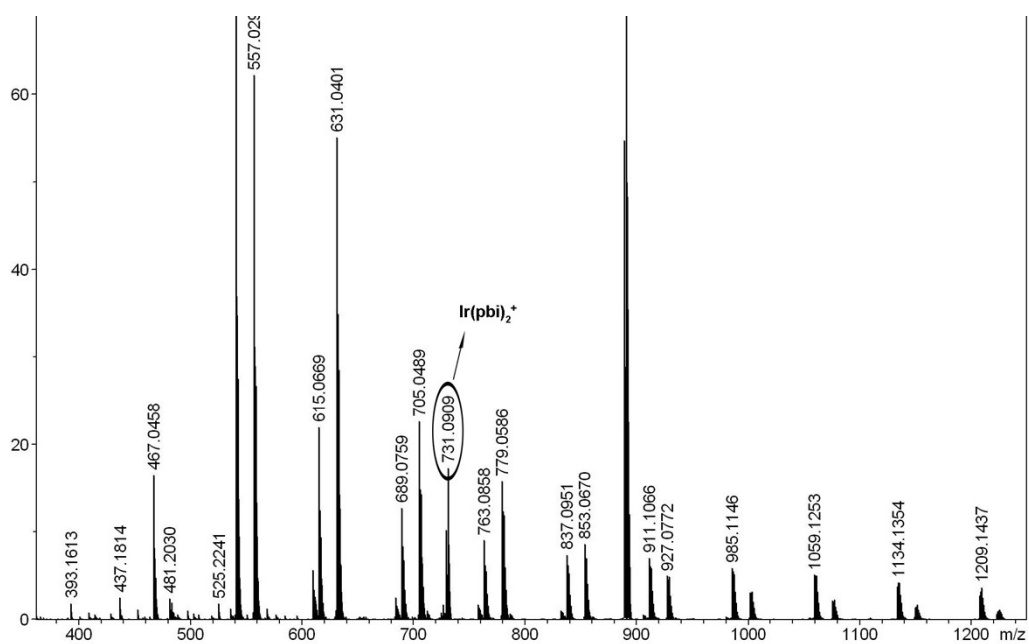


Fig. S7. ESI-MS spectrum of complex 1 in CH₃CN solution with 1.0 e.q. of Hg(II).