

Supporting Information

Hierarchical Structure of Cubic $K_{0.5}La_{0.5}TiO_3$ Layers and Enhanced

Photocatalytic Hydrogen Evolution after Surface Acidification

Wenli Zhao¹, Guilian Zhu^{1, 2}, Wei Zhao¹, Tianquan Lin^{*1}, Fangfang Xu^{*1}, Fuqiang Huang^{*1, 2}

¹ CAS Key Laboratory of Materials for Energy Conversion and State Key Laboratory of High Performance Ceramics and Superfine Microstructures, Shanghai Institute of Ceramics, Chinese Academy of Sciences (CAS), Shanghai 200050, P.R. China.

² Beijing National Laboratory for Molecular Sciences and State Key Laboratory of Rare Earth Materials Chemistry and Applications, College of Chemistry and Molecular Engineering, Peking University, Beijing 100871, P.R. China

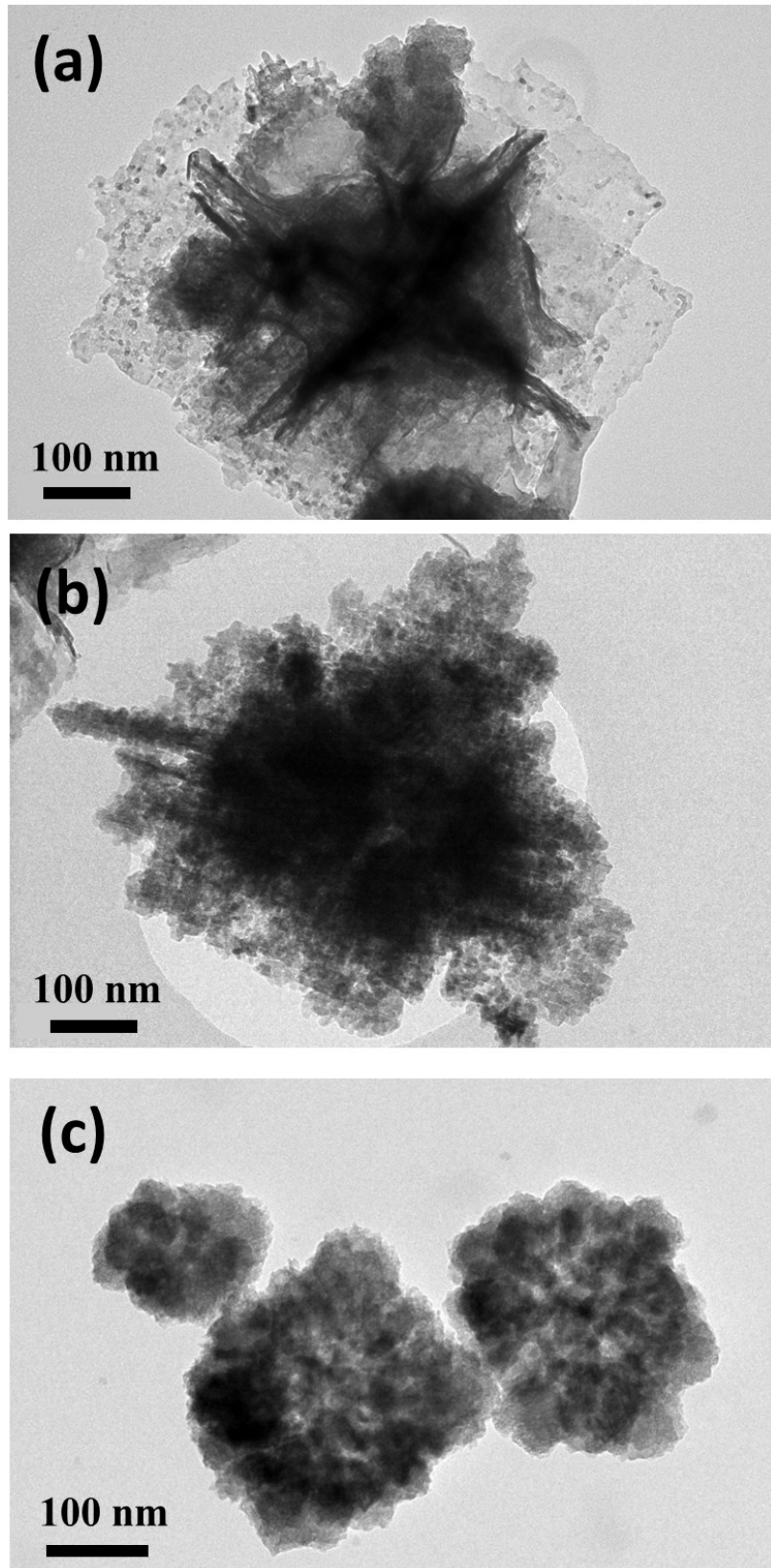


Figure S1. TEM images of the samples obtained after acidification treatment for different times:

(a) 0.5h, (b) 2h and (c) 4 h

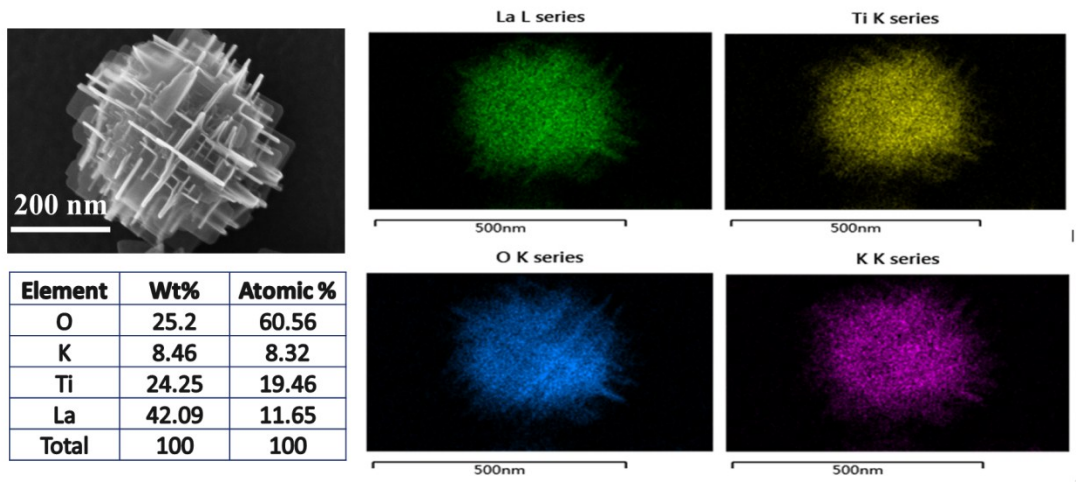


Figure S2. The typical SEM image of KLTO with details of elemental mapping for La, Ti, O and K and corresponding EDS result.

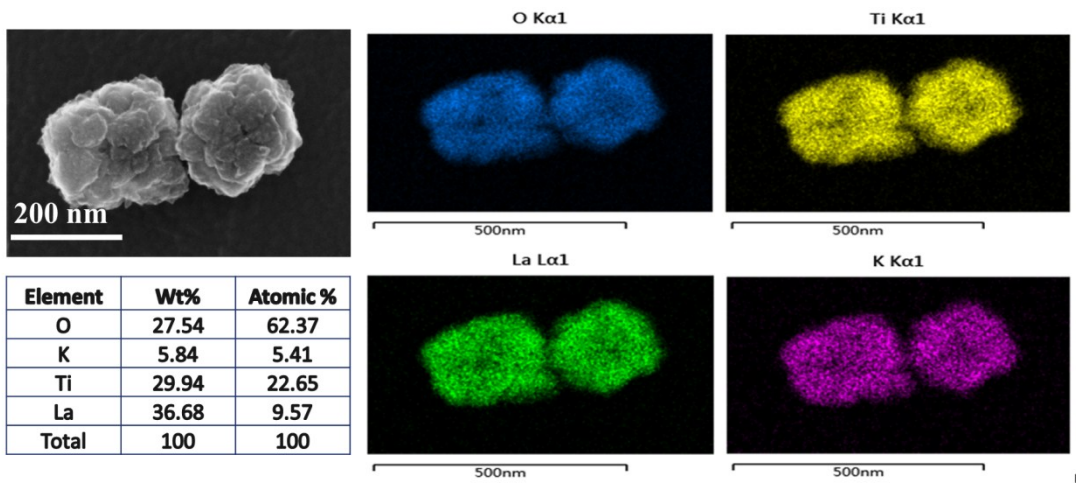


Figure S3. The typical SEM image of H-KLTO with details of elemental mapping for La, Ti, O and K and corresponding EDS result.