

Supporting Information-II

Catalytically Active Lead-Azolium Coordination Assemblies with Diversified Lead(II) Coordination Environments

Chatla Naga Babu,^a Paladugu Suresh,^a Katam Srinivas,^a Arruri Sathyanarayana,^a Natarajan Sampath^b and Ganesan Prabusankar^{a*}

^a Department of Chemistry, Indian Institute of Technology Hyderabad, ODF Campus, Yeddumailaram, Telangana, INDIA-502 205. Fax: +91 40 2301 6032; Tel: +91 40 2301 6089; E-mail: prabu@iith.ac.in

^b School of Chemical and Biotechnology, SASTRA University, Tirumalaisamudram, Thanjavur, Tamil Nadu, INDIA-613 401.

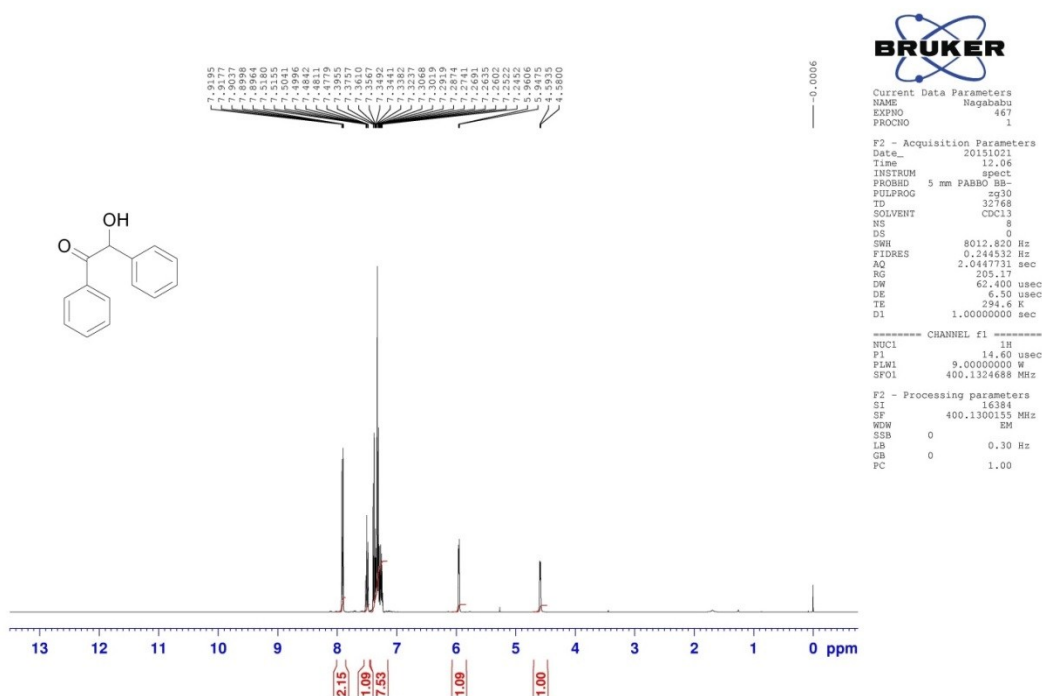


Figure S1. Table 2, Entry 1.

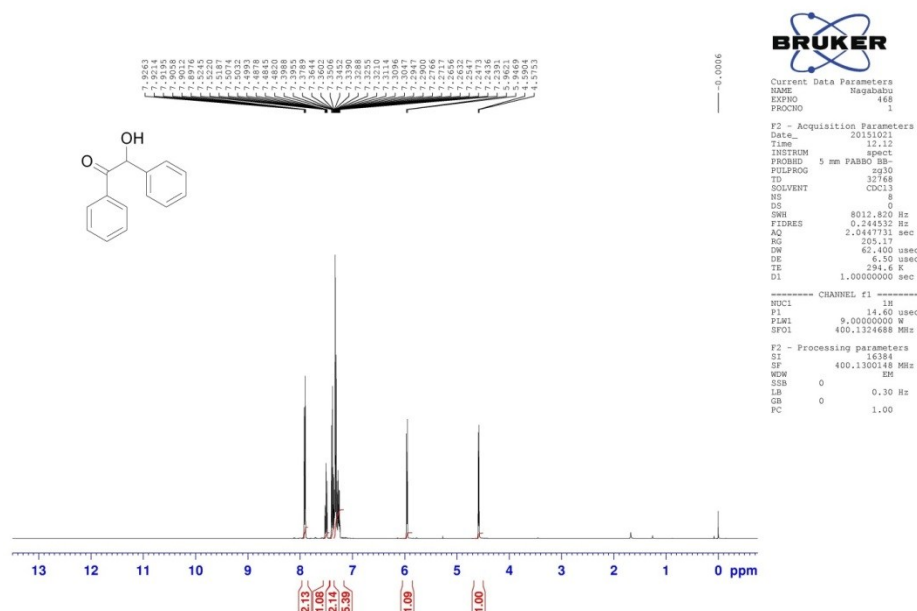


Figure S2. Table 2, Entry 2.

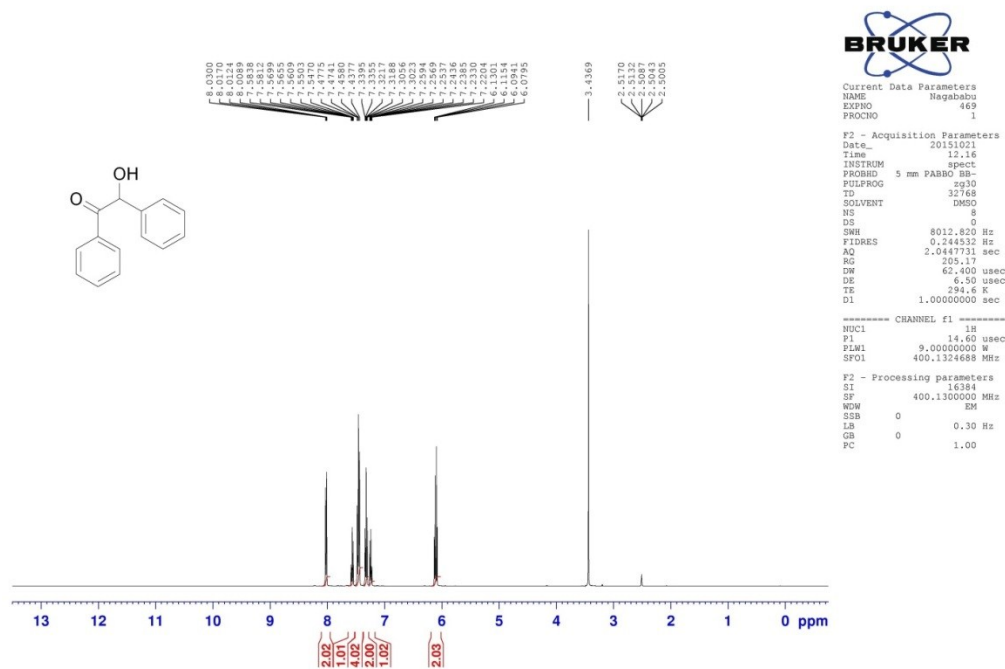
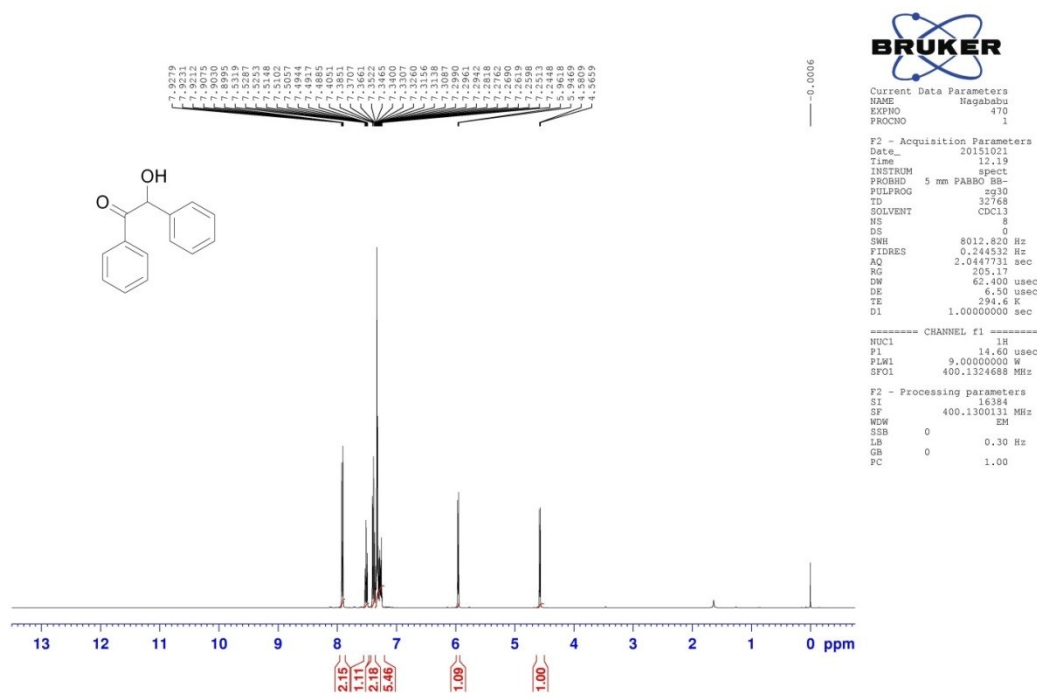


Figure S3. Table 2, Entry 3.



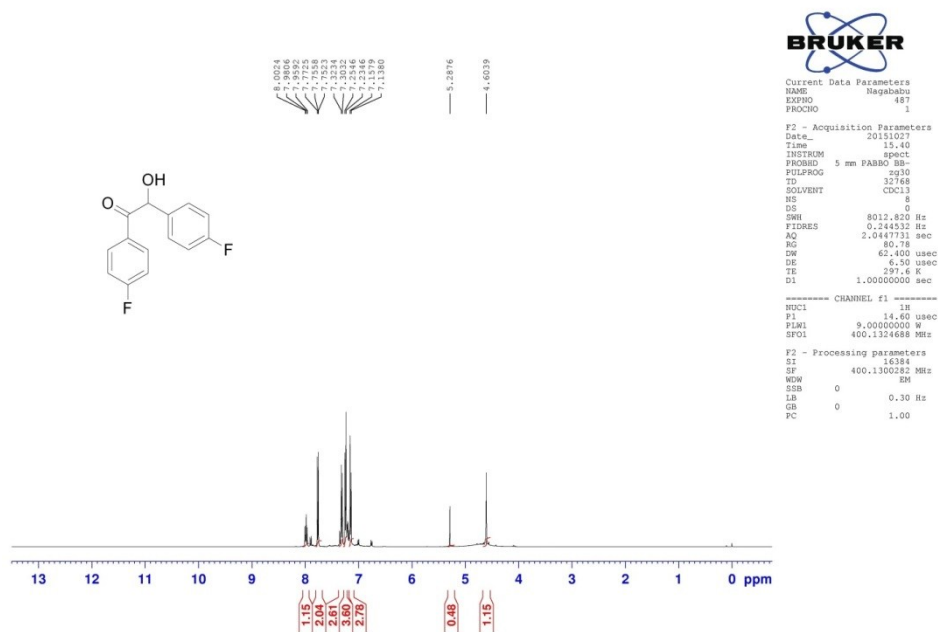


Figure S8. Table 3, Entry 3.

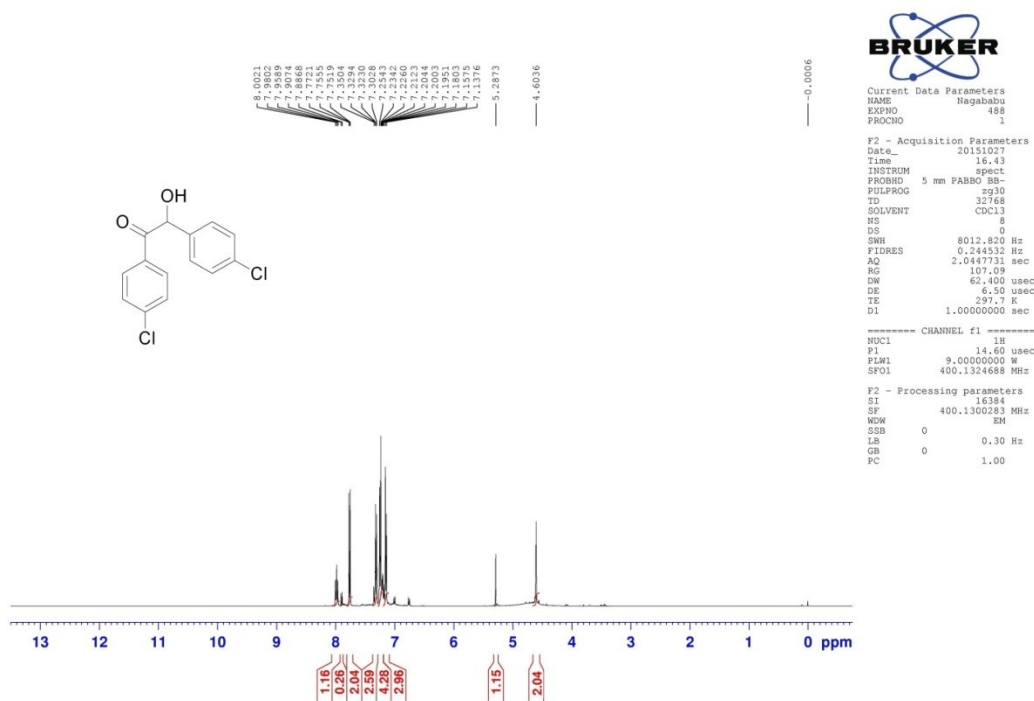


Figure S9. Table 3, Entry 4.

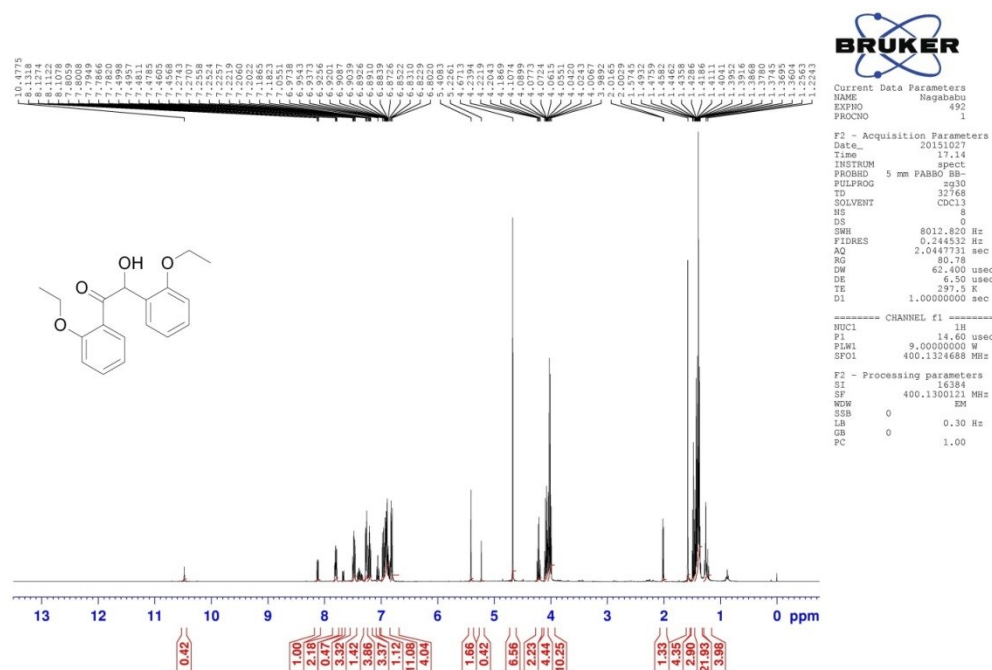


Figure S10. Table 3, Entry 5.

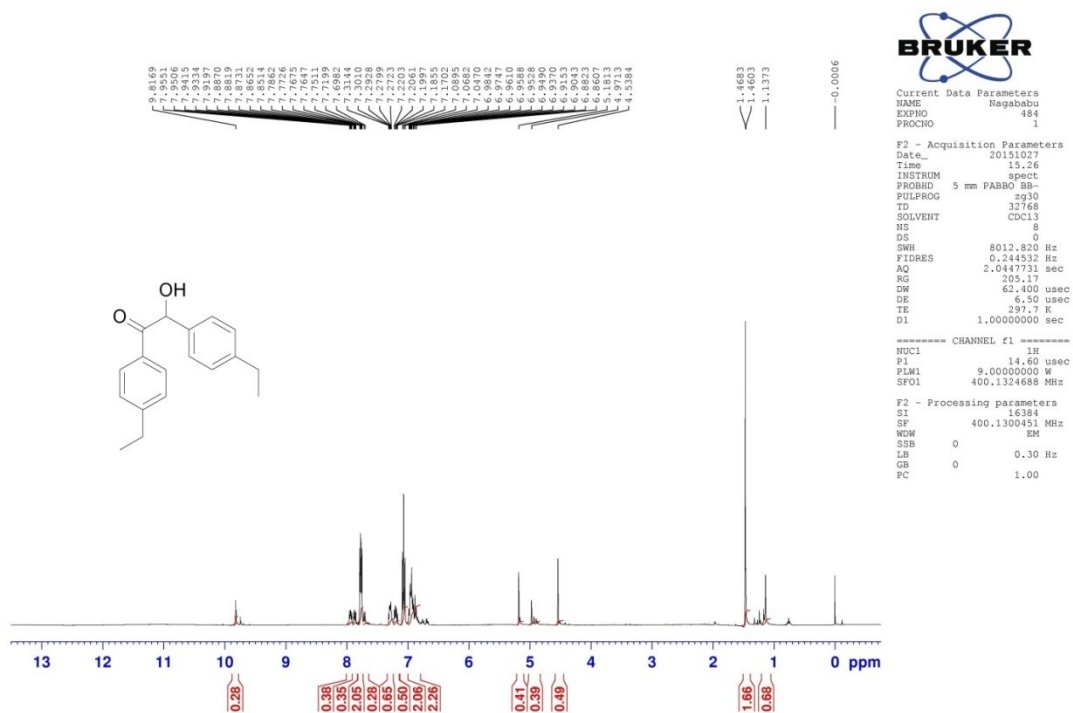


Figure S11. Table 3, Entry 6.

Sample Name	GP-NB-98-2-H	Position	P1-A3	Instrument Name	HRMS_Q-ToF	User Name	
Inj Vol	0.1	InjPosition		SampleType	Sample	IRM Calibration Status	Success
Data Filename	GP-NB-98-2-H-01.d	ACQ Method	HRMS_Dual ESI_POS_SD	Comment		Acquired Time	02-Nov-15 4:34:15 PM



Figure S12. HRMS(+ESI) spectrum of L²H₂Br₂.

Sample Name	GP-NB-98-2-H	Position	P1-A3	Instrument Name	HRMS_Q-ToF	User Name	
Inj Vol	0.1	InjPosition		SampleType	Sample	IRM Calibration Status	Success
Data Filename	GP-NB-98-2-H-01.d	ACQ Method	HRMS_Dual ESI_POS_SD	Comment		Acquired Time	02-Nov-15 4:34:15 PM

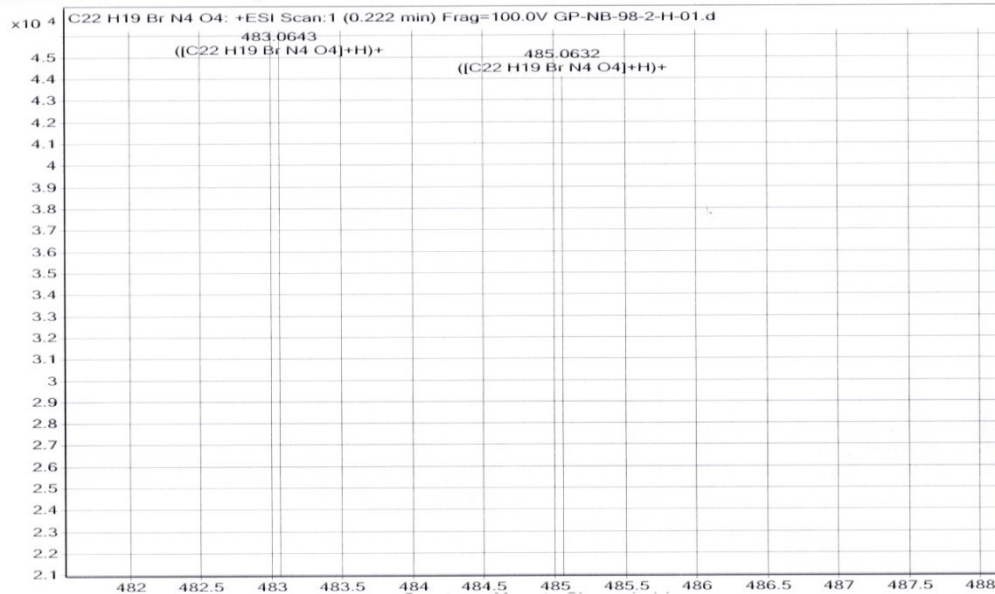


Figure S13. HRMS(+ESI) spectrum of L²H₂Br₂.

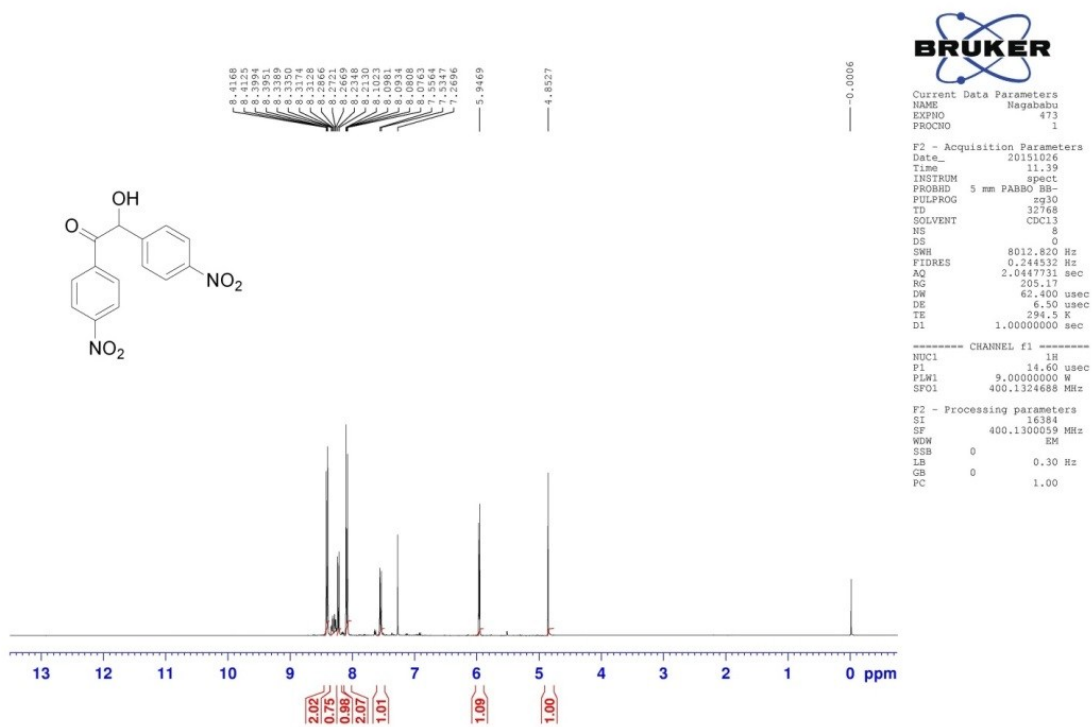


Figure S14. Table S2, Entry 1 First run.

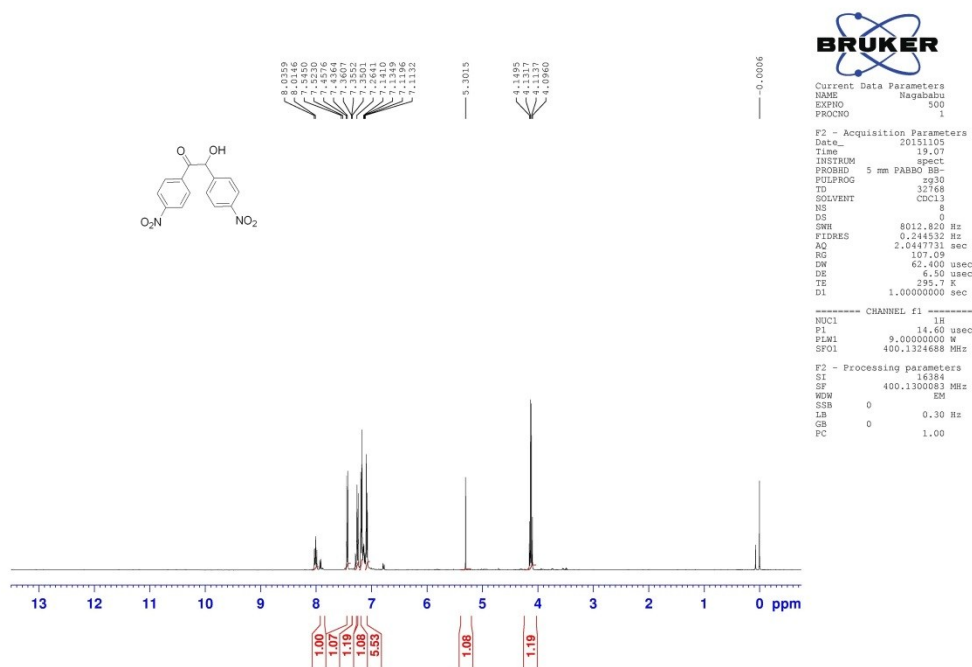


Figure S15. Table S2, Entry 1 Second run.

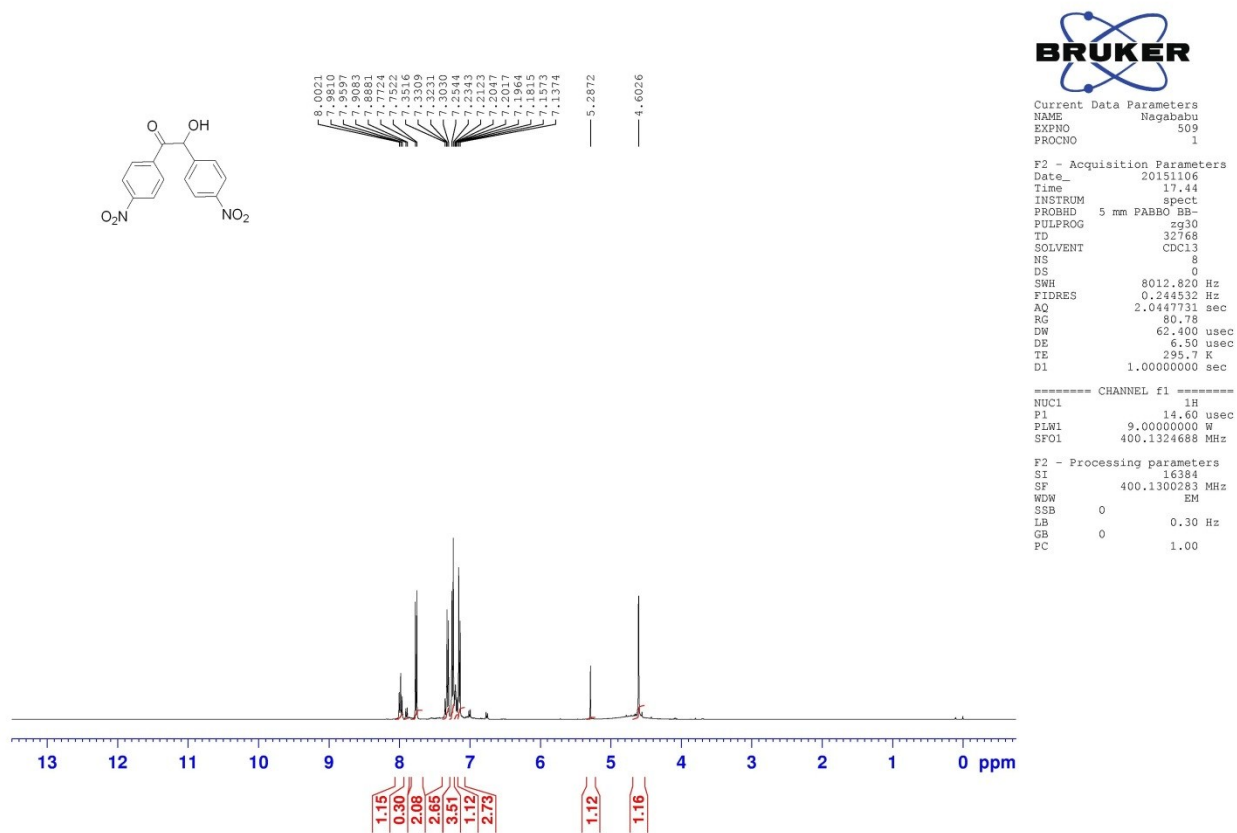


Figure S16. Table S2, Entry 1 Third run.

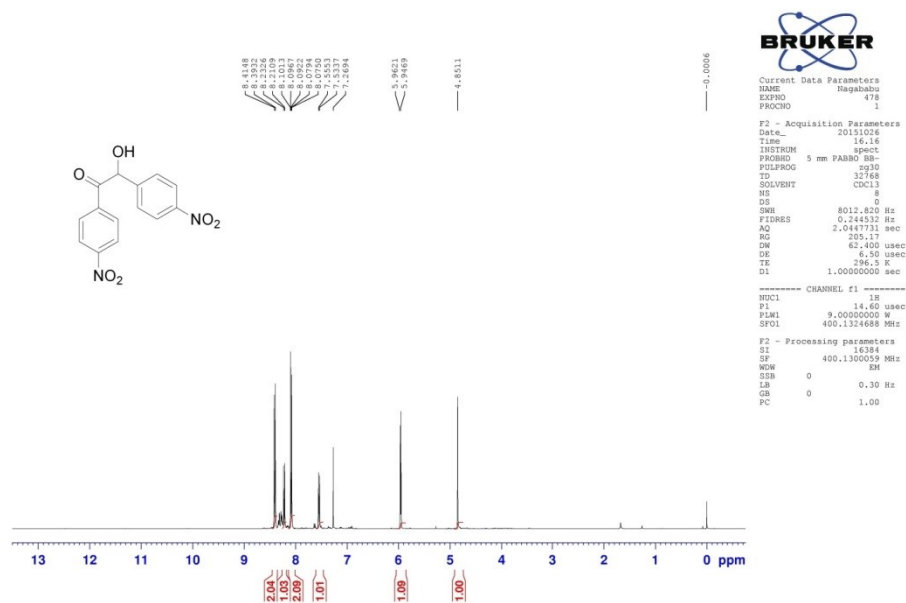
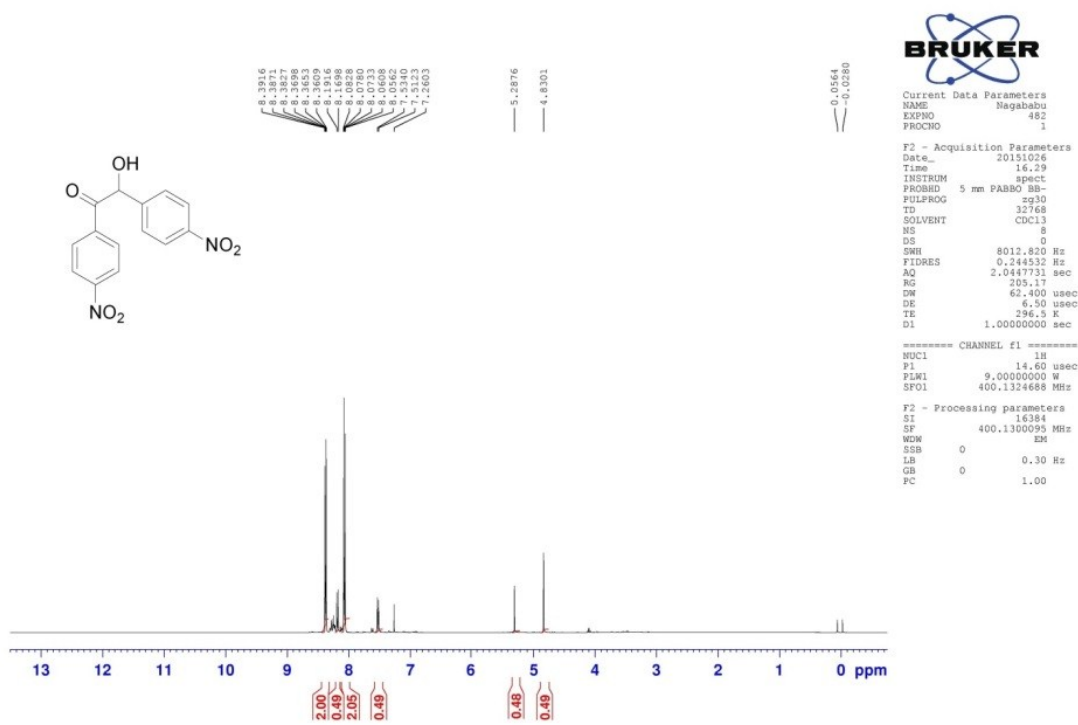


Figure S17. Table S2, Entry 2 First run.



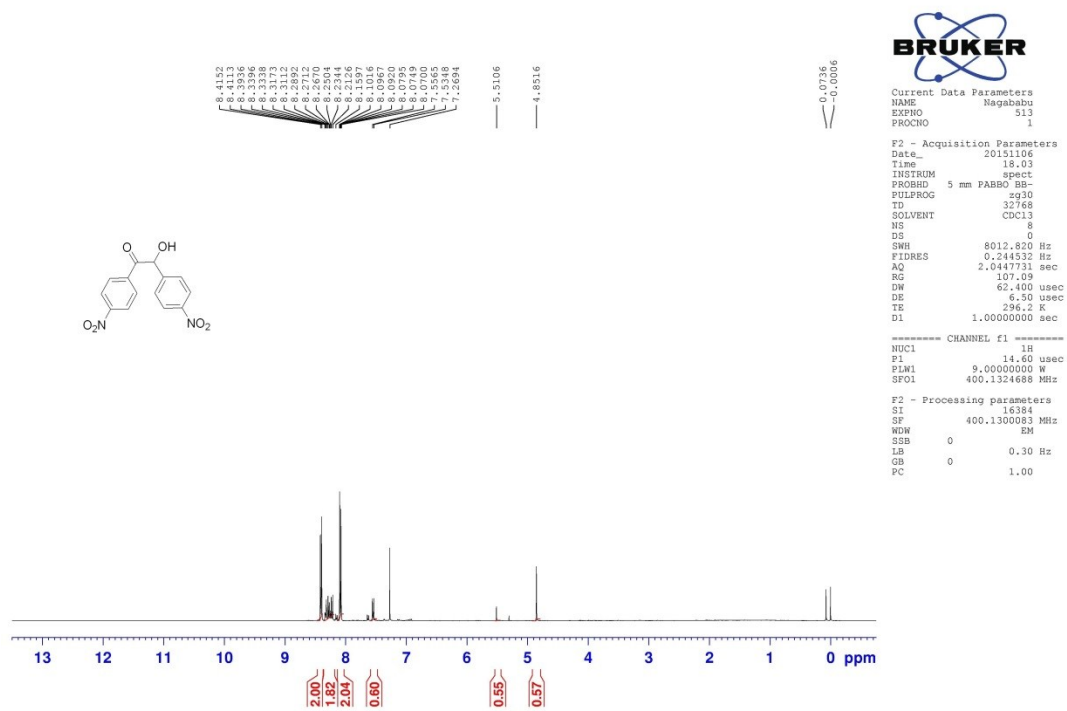


Figure S28. Table S2, Entry 5 Third run.