

Supplementary information

Figure S1 Variations of total soluble Fe at 100 mg/L Pb^{2+} with different initial solution pH (3.0, 3.8, 4.7, and 5.7).

Figure S2 Variations of total soluble Fe at initial pH 4.7 with different initial Pb^{2+} concentrations (50, 100, and 200 mg/L).

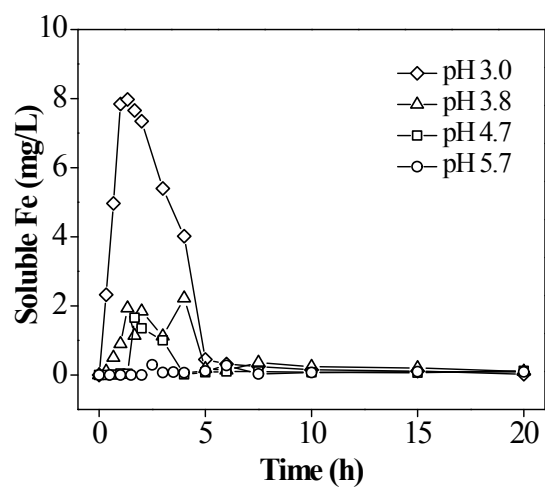


Figure S1 Variations of total soluble Fe at 100 mg/L Pb^{2+} (ceramisite dosage 10 g/L) with different initial solution pH (3.0, 3.8, 4.7, and 5.7).

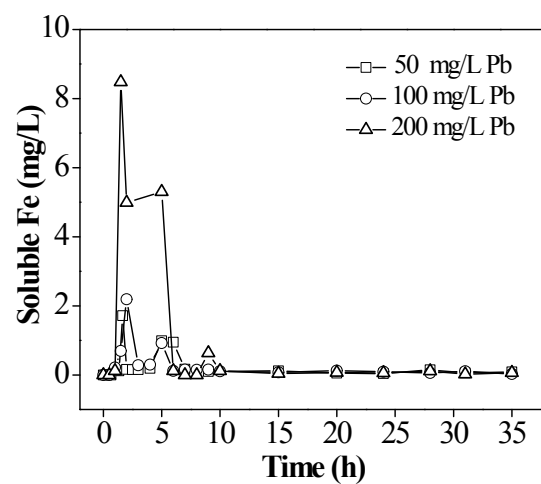


Figure S2 Variations of total soluble Fe at initial pH 4.7 (ceramisite dosage 5 g/L) with different initial Pb²⁺ concentrations (50, 100, and 200 mg/L).