

SUPPLEMENTARY INFORMATION

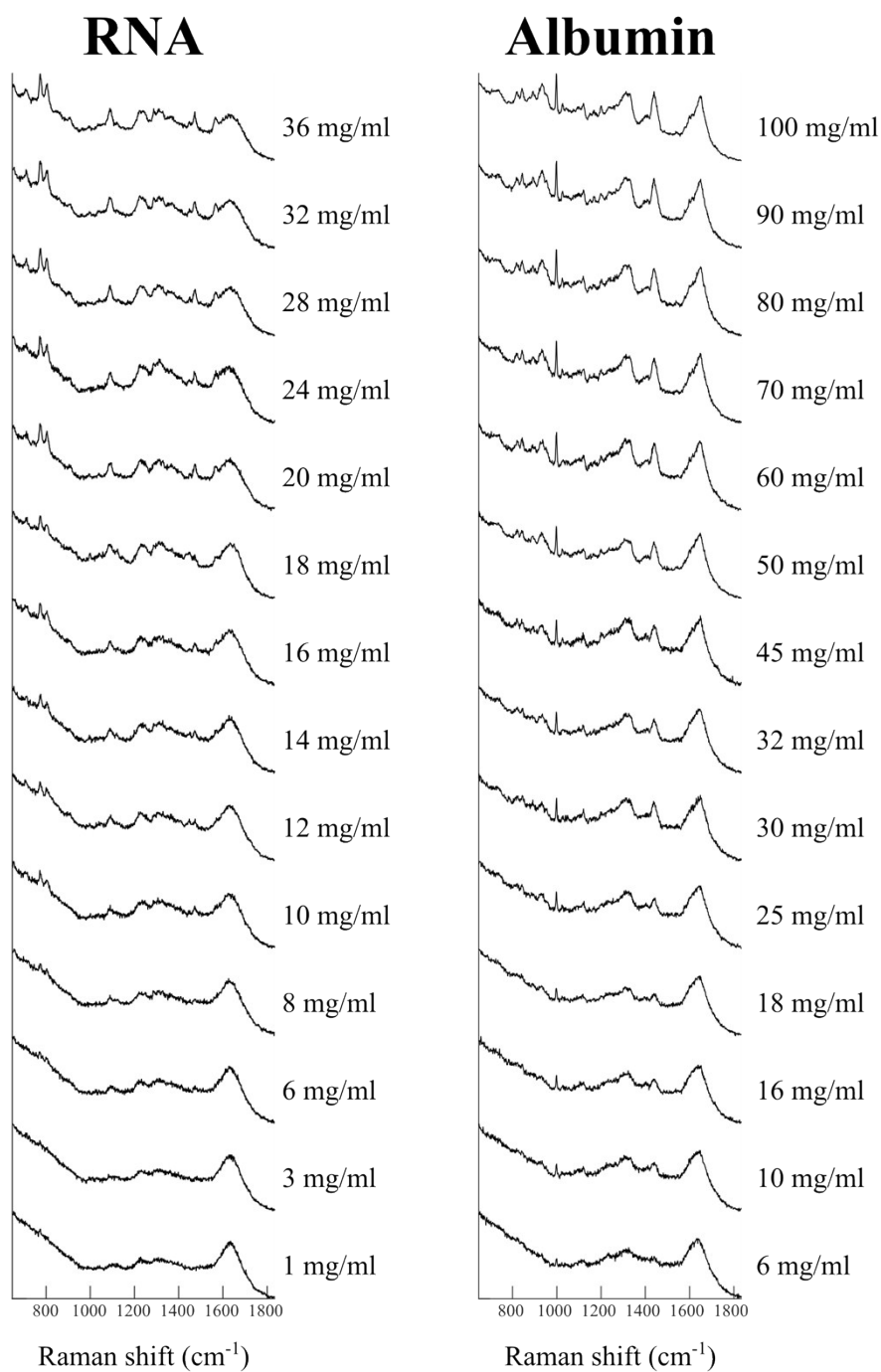
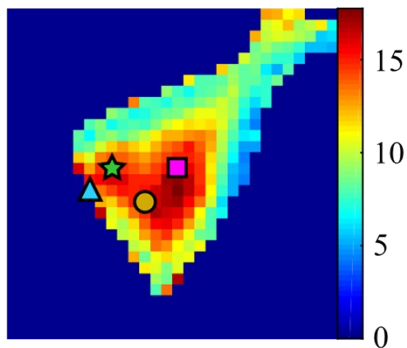


Figure S1: Raman spectra used for the solution-based calibration.



**RNA
concentration**

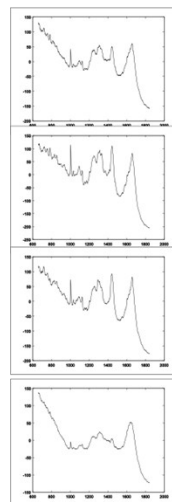
★ 16 mg/ml

■ 17 mg/ml

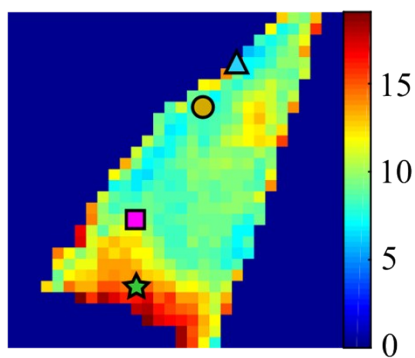
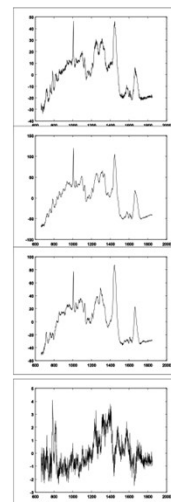
● 10 mg/ml

▲ 21 mg/ml

**SVD
PC1-8**



**SVD
PC2-8**

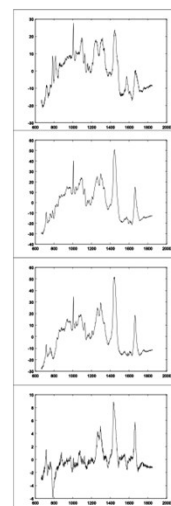
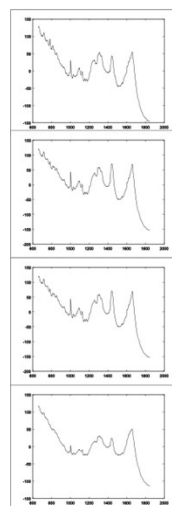


★ 16 mg/ml

■ 12 mg/ml

● 8 mg/ml

▲ 16 mg/ml



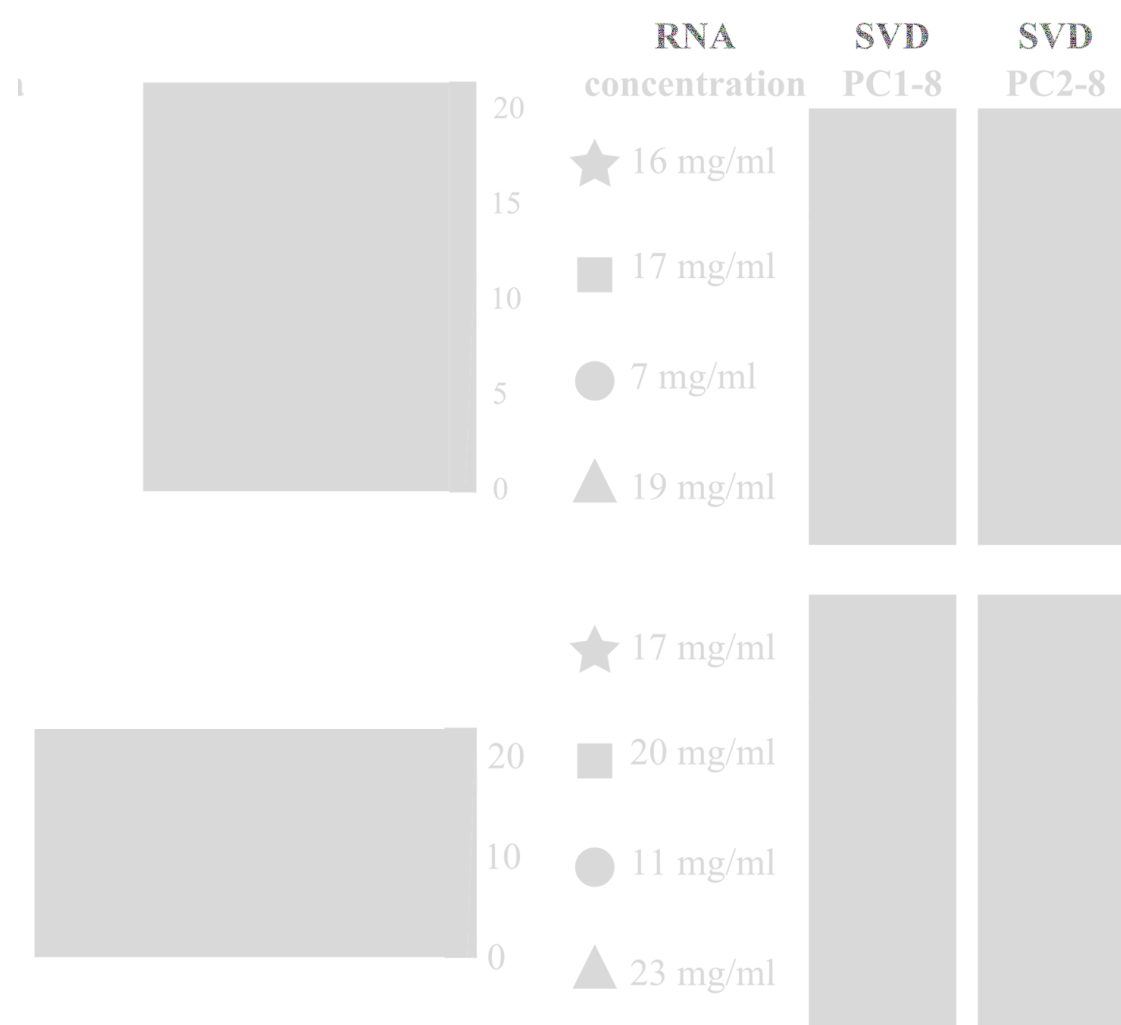


Figure S2: Selected Raman spectra from the concentration maps presented in Figure 4.