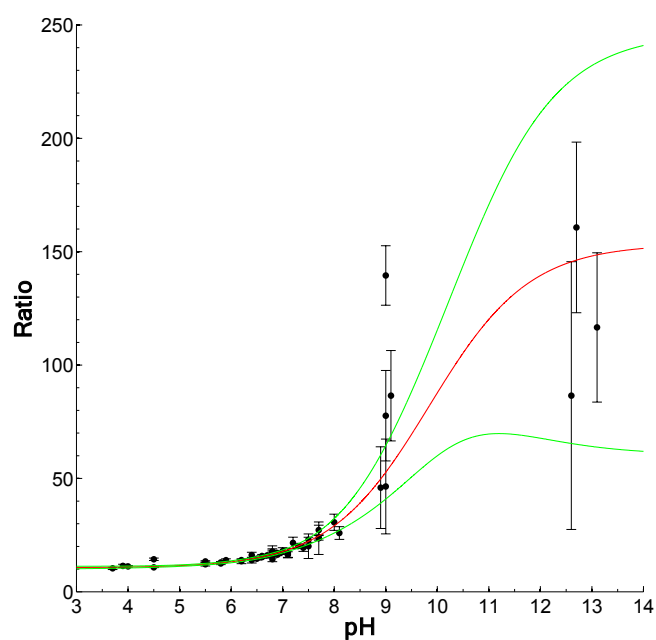
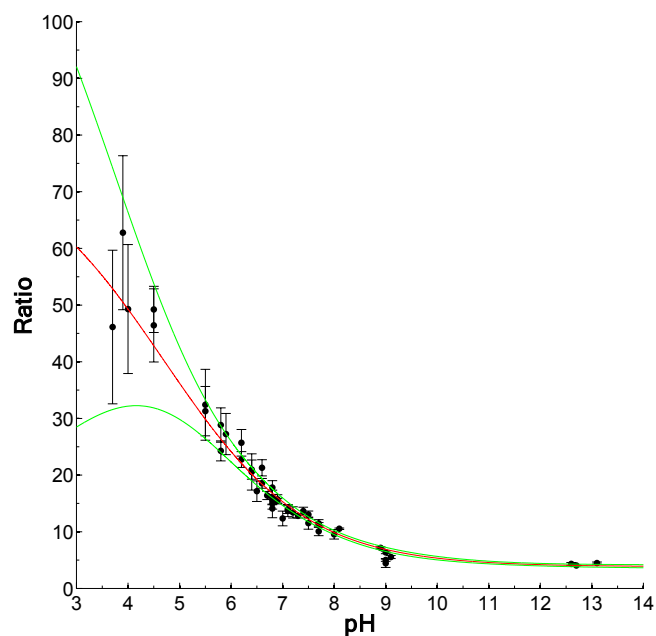


Supplementary Information

SERS as a tool for *in vitro* toxicology

Kate M. Fisher, Jennifer A. McLeish, Lauren Jamieson, Jing Jiang, James Hopgood, Stephen McLaughlin, Ken Donaldson, Colin J. Campbell



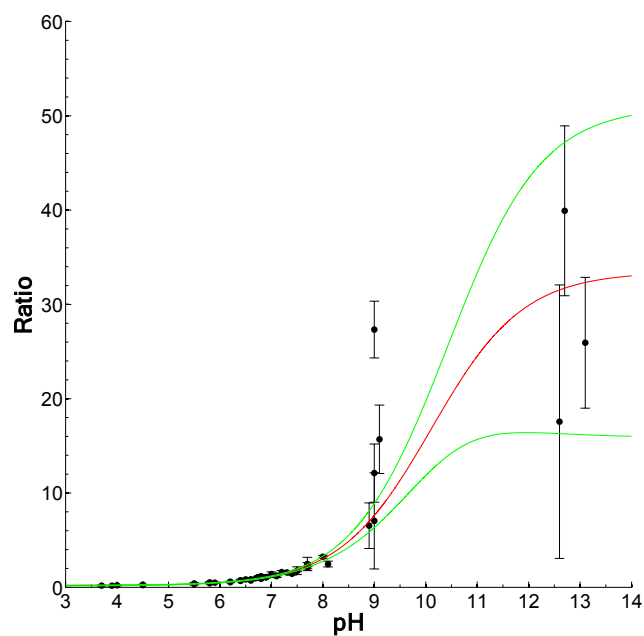
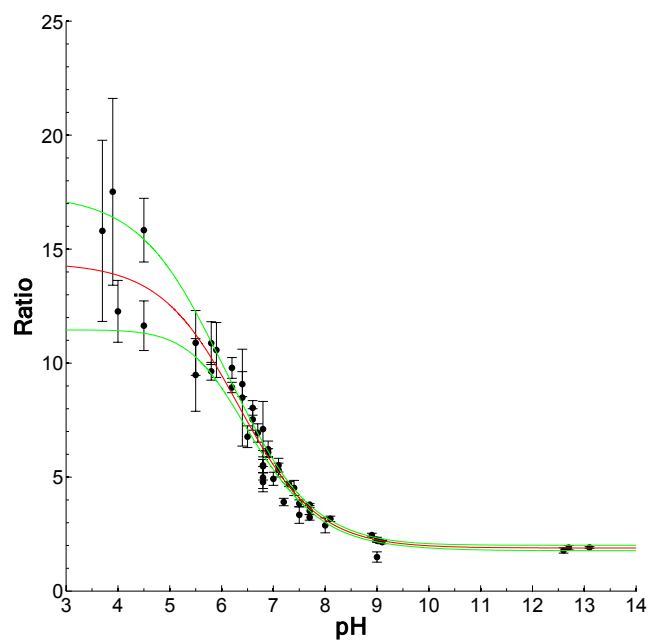


Figure S1: Variation of 1590/1400 (top), 1590/1700 (middle) and 1400/1700 (bottom) peak height ratios with pH. A Boltzmann curve (red line) has been fitted to points which are the weighted means from three independent datasets; error bars are the standard deviation of the weighted mean; green lines are the 95% non-simultaneous confidence bands.



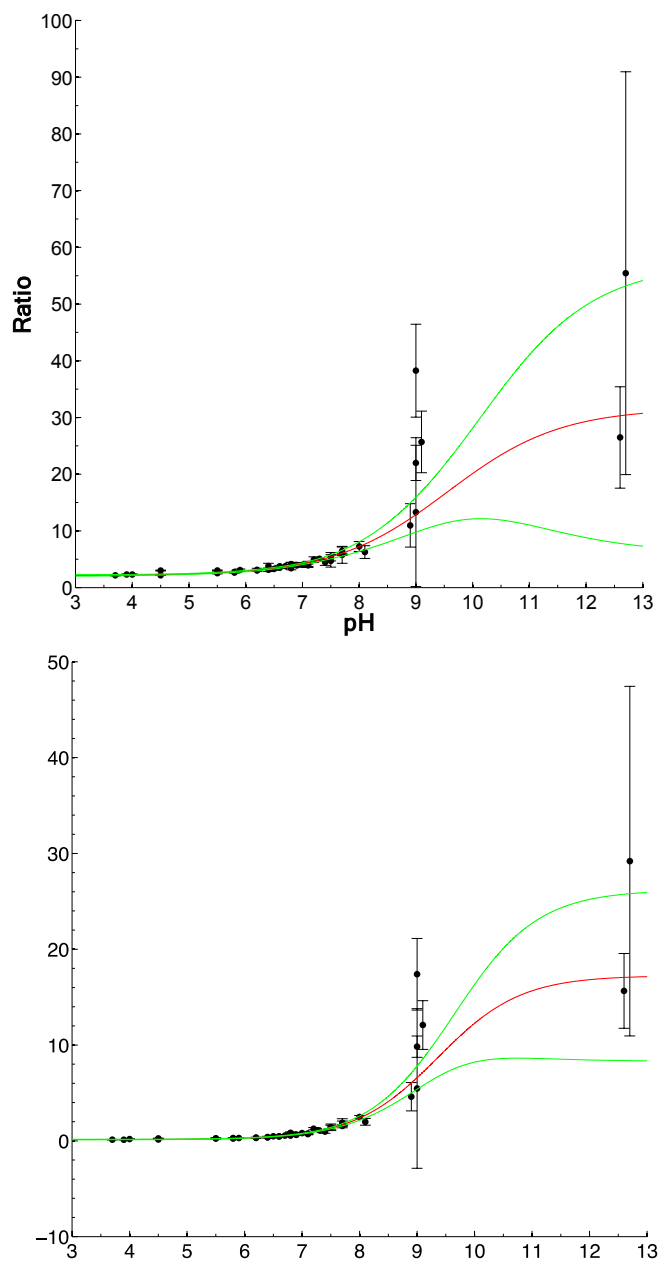


Figure S2: Variation of 1590/1400 (top), 1590/1700 (middle) and 1400/1700 (bottom) peak areas ratios with pH. A Boltzmann curve (red line) has been fitted to points which are the weighted means from three independent datasets; error bars are the standard deviation of the weighted mean; green lines are the 95% non-simultaneous confidence bands.