

Table Fasting serum triglyceride concentration in F344 male rats fed low-fat diet (LF) and high-fat diet (HF) for 28 d

	Dietary group				
	0 wk	1 wk	2 wk	3 wk	4 wk
Serum triglyceride, <i>mmol/L</i>					
LF	0.75±0.05	0.89±0.13	0.94±0.13	1.02±0.22	1.08±0.29
HF	0.69 ±0.09	0.91±0.2	0.99±0.11	0.99±0.06	0.77±0.17
P-value	0.260	0.897	0.510	0.773	0.104

Values are mean ± SD, *n* = 5. Significant different between the LF and HF groups was determined by student's t-test. This is unpublished data.

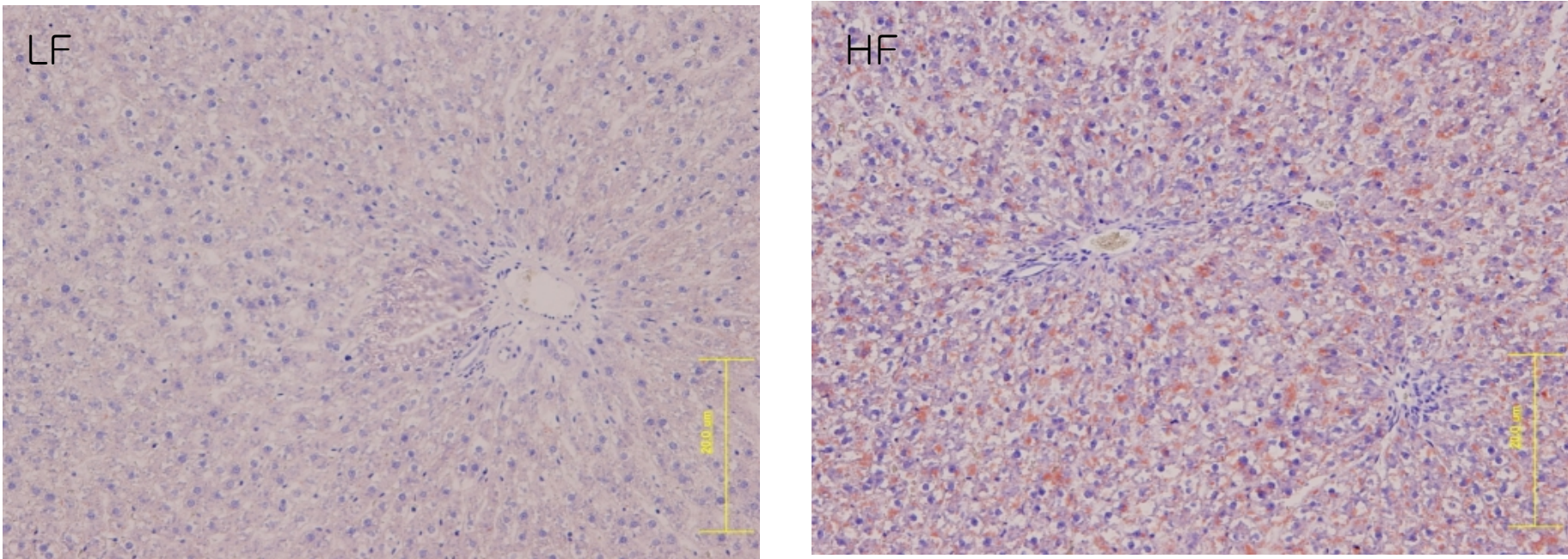


Figure Histological examination of the liver tissue from rats fed low-fat diet (LF) and high-fat diet (HF) for 28 d