

Fig. S1 Example of the qualitative comparison of 'Temri' leaves extracted by two different protocols (see the Experimental section) and analyzed by rp-uhplc-dad-qtof-ms in the negative ionization mode. The intensity of the base peak chromatograms (bpc) was normalized to the largest area of both chromatograms.

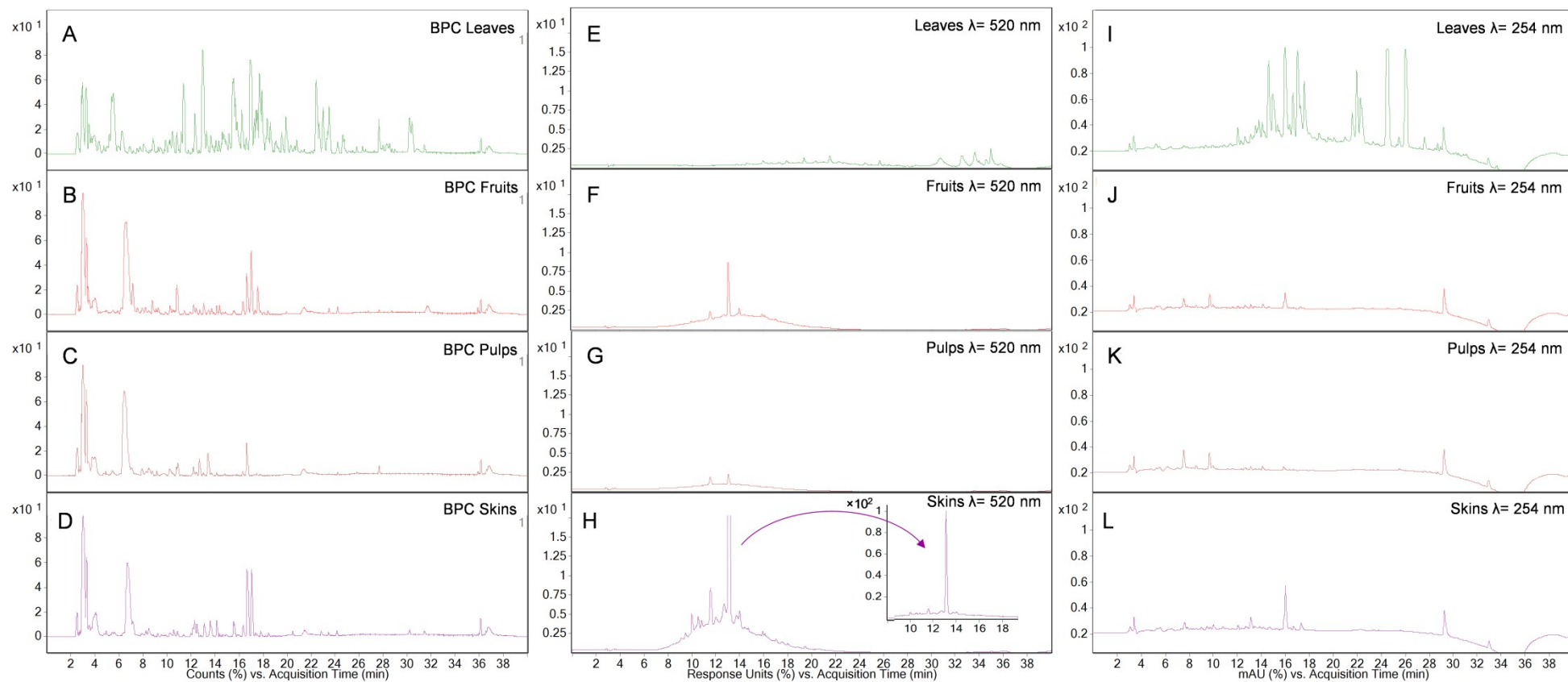


Fig. S2 Chromatographic profiles of the leaves, fruits, skins and pulps from *F. carica* cultivar ‘Soltani’ obtained by rp-uhplc-dad-qtof-ms: base peak chromatogram (bpc) in negative ionization mode using analytical method 1 (A–D) and UV chromatograms at 254 (E–H) and 520 nm (I–L) using the analytical method 2.

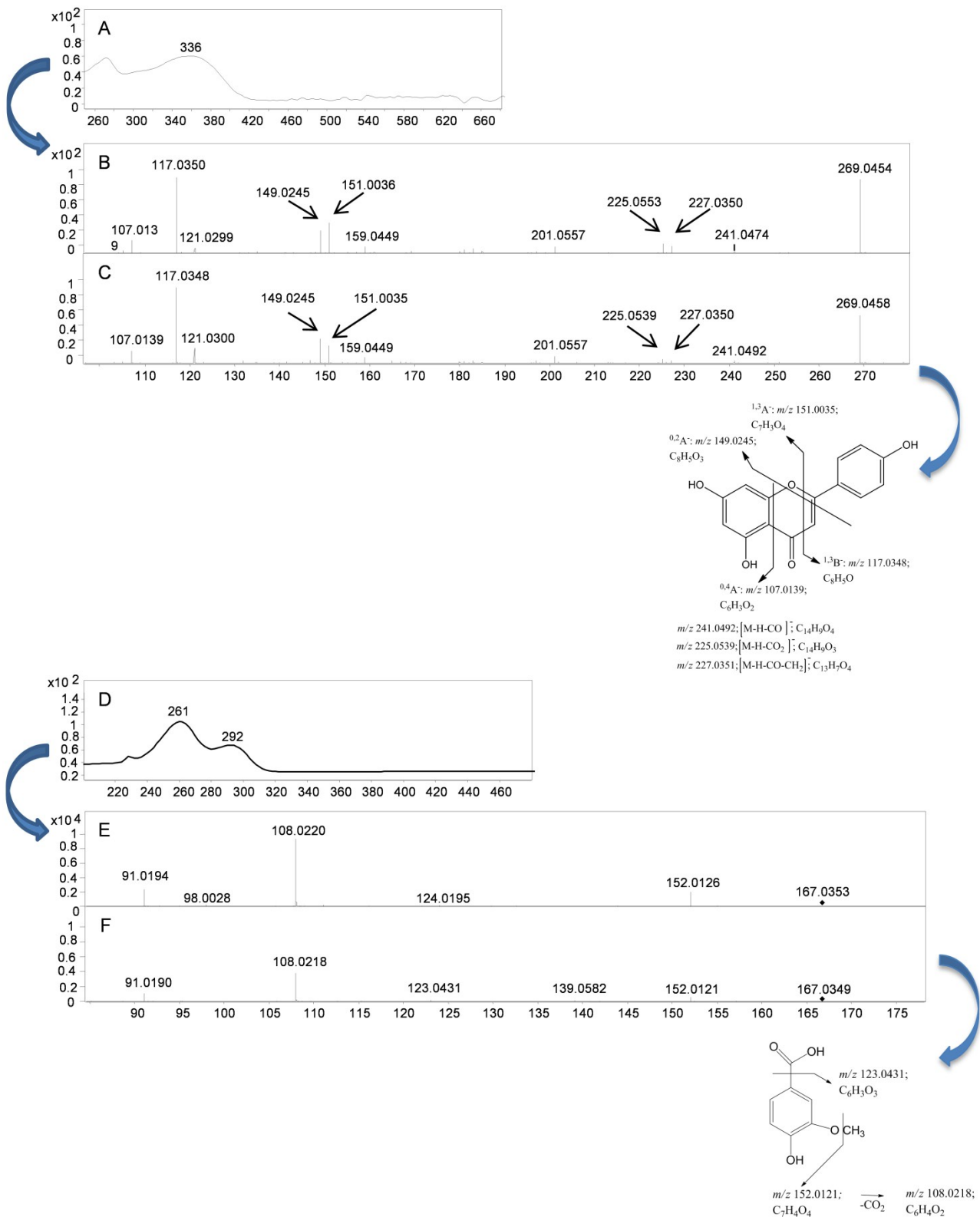


Fig. S3 Examples of the UV (A and D) and ms/ms spectra highlighting the main fragments of commercial standards of (B) apigenin and (E) vanillic acid compared with those found in *F. carica*, (C) apigenin and (F) vanillic acid.