

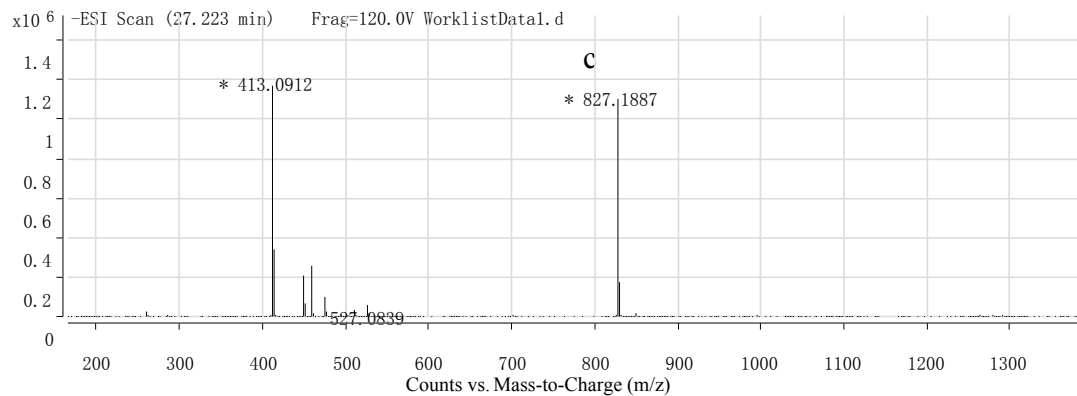
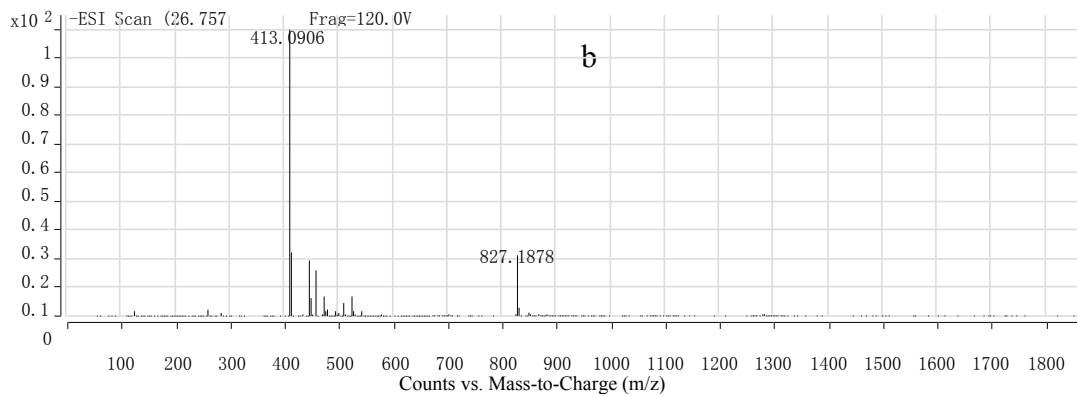
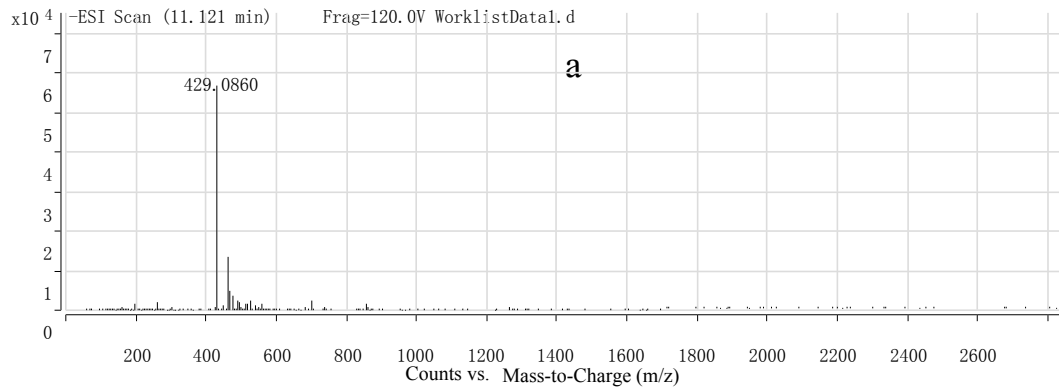
## Supplementary material

**Table 1.** UPLC-DAD retention times, characteristic UV/Vis maxima and negative ions in UPLC-ESI-QTOF-MS of grape peel and seed, and *C. axillaris* peels PAs phloroglucinolysis products.

Peak	Rt(min)	Compound <sup>a</sup>	Max(nm)	[M-H] <sup>-</sup> m/z	Sample
3	11.121	Epigallocatechin - phloroglucinol (EGC-P)	232, 271	429	Grape peel; F2,F3,F4, PPAs
4	26.757	Catechin - phloroglucinol (C-P)	229, 278	413	Grape peel and seed; F2,F3,F4, PPAs
5	27.223	Epicatechin - phloroglucinol (EC-P)	230, 279	413	Grape peel and seed; F2,F3,F4, PPAs
6	28.972	Catechin (C)	230, 280	289	Grape peel and seed; F2,F3,F4, PPAs
7	33.581	Epicatechin (EC)	229, 279	289	Grape peel and seed; F2,F3,F4, PPAs
8	40.767	Epicatechin gallate - phloroglucinol (ECG-P)	230, 278	565	Grape peel and seed; F2,F3,F4, PPAs
9	47.104	Epicatechin gallate (ECG)	231,230	441	Grape peel and seed; F2,F3,F4, PPAs

<sup>a</sup>C, EC, EGC and ECG are the abbreviation for catechin, epicatechin, epigallocatechin and epicatechin gallate, respectively; P is the abbreviation for phloroglucinol.

**Figure 1.** ESI-QTOF mass spectrum of extension subunit-phloroglucinol adducts of PAs from *C. axillaris* peels. (a): peak 3 (epigallocatechin-phloroglucinol); (b): peak 4 (catechin-phloroglucinol); (c): peak 5 (epicatechin-phloroglucinol); (d): peak 8 (epicatechin gallate-phloroglucinol).



x10<sup>6</sup> -ESI Scan (40.767 min) Frag=120.0V WorklistData1.d **d**

