

Supporting information

Structural Characterization of ^{13}C -Enriched Humins and Alkali-treated ^{13}C Humins by 2D Solid-state NMR

Ilona van Zandvoort,^{†,a} Eline J. Koers,^{†,b} Markus Weingarth^b, Pieter C. A. Bruijninx^{*,a}, Marc Baldus,^{*,b} and Bert M. Weckhuysen^{*,a}

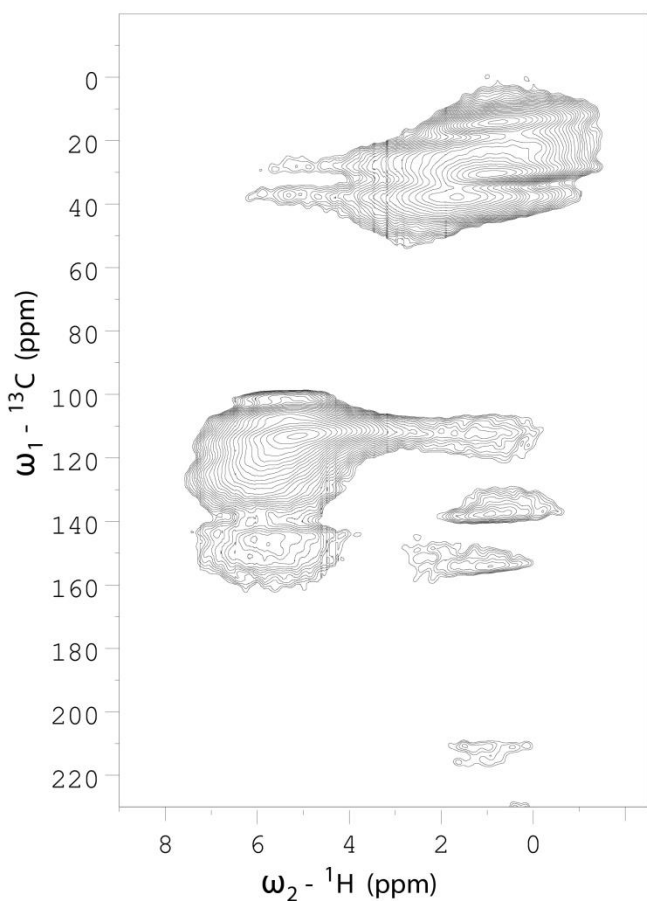


Figure S1. Proton-detected HETCOR spectra of ^{13}C -labeled humins recorded with CP contact times of 2.5 ms for both CP steps. The lower contour level allows for the long-range correlations $\text{C}_{\text{ketone}}\text{-H}_{\text{aliphatic}}$ around $\delta\ ^1\text{H} = 1\text{-}2\text{ ppm}$ and $\delta\ ^{13}\text{C} = 210\text{ ppm}$ to be observed.