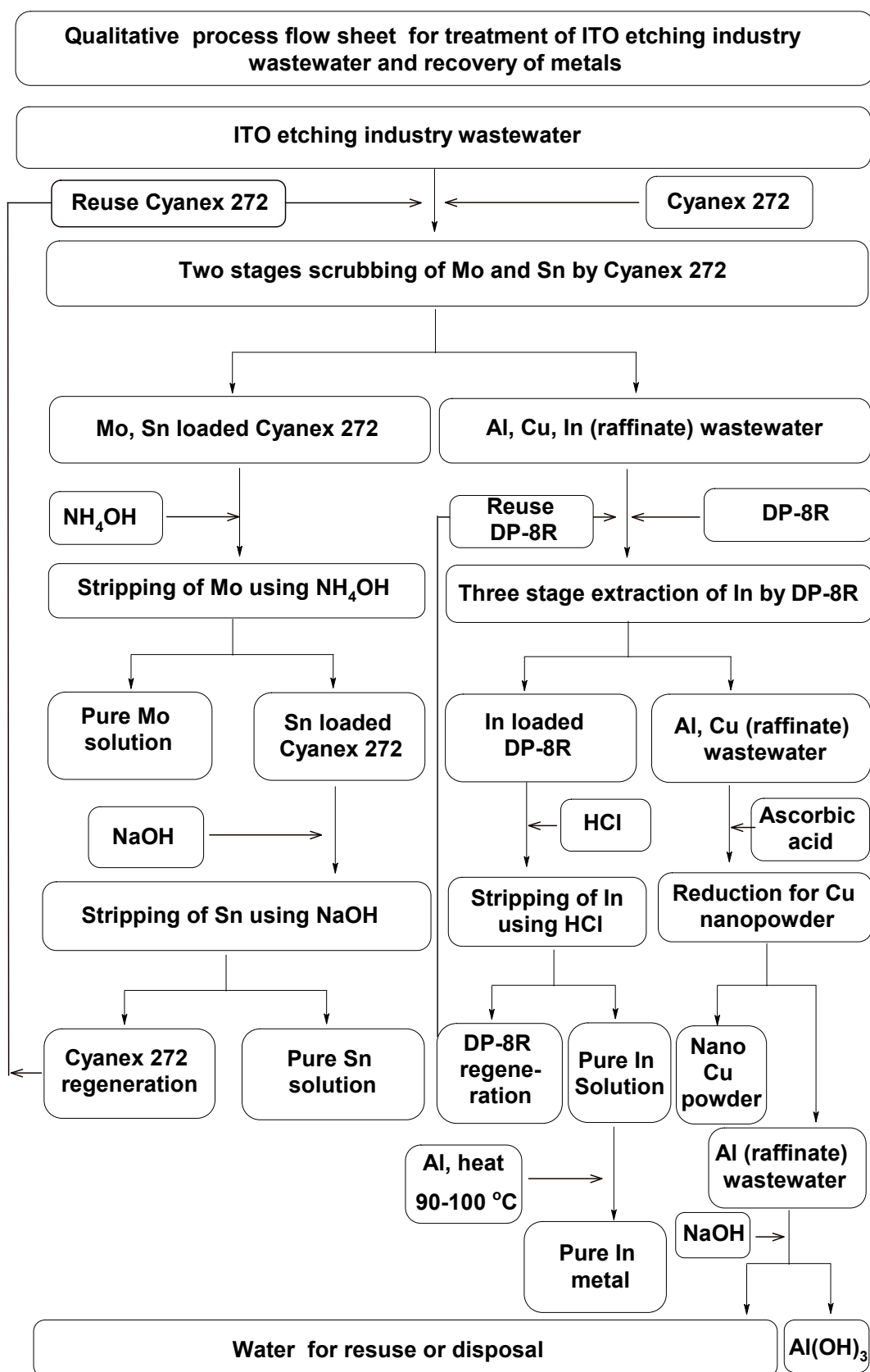


Supplementary Figures



Supplementary Fig. 1: Pilot plant view of batch process ITO etching industry wastewater treatment plant: (a) and (c) view of plant, (b) transparent window to watch liquid-liquid separation, and (d) inside view of the baffle mixture reactor.



Supplementary Fig.2: Qualitative process flow sheet for the treatment of indium-tin-oxide (ITO) etching wastewater and total recovery of metal values.